

FOR SUBLEASE > OFFICE SPACE

Hamilton Building Sublease

529 SW THIRD AVENUE, SUITE 200 PORTLAND, OR 97204



THE BUILDING

- > 22,611 SF office building constructed in 1928
- > Bike storage, lockers and showers
- > Excellent freeway access and parking
- > Creative space with great natural light
- > Close to Trimet lighttrail and bus stops
- > Walking distance to restaurants, food-carts, shopping, and Waterfront Park

SUBLEASE

- > 2,112 - 4,224 SF
- > Expires October 31, 2019
- > Rate: \$27.00/SF Full Service



JOE BEEHLER
503 499 0065
PORTLAND, OR
joe.beehler@colliers.com

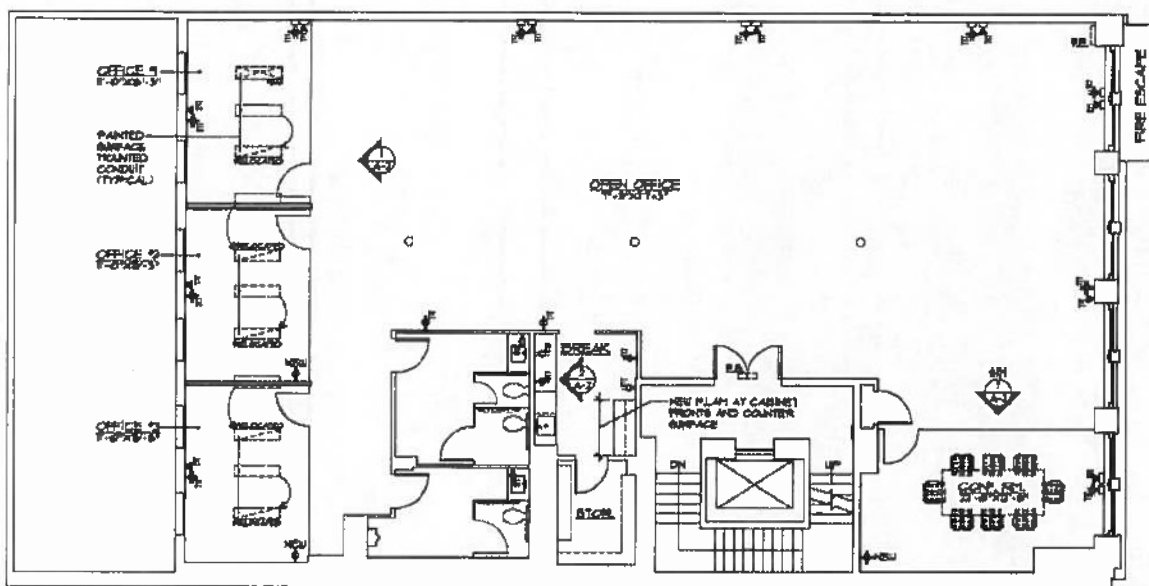
COLLIERS INTERNATIONAL
851 SW Sixth Avenue, Suite 1200
Portland, OR 97204
www.colliers.com

FOR SUBLEASE > OFFICE SPACE

Hamilton Building Sublease

529 SW THIRD AVENUE, SUITE 200 PORTLAND, OR 97204

Suite 200 - 4,224 SF



This document has been prepared by Colliers International for advertising and general information only. Colliers International makes no guarantees, representations or warranties of any kind, expressed or implied, regarding the information including, but not limited to, warranties of content, accuracy and reliability. Any interested party should undertake their own inquiries as to the accuracy of the information. Colliers International excludes unequivocally all inferred or implied terms, conditions and warranties arising out of this document and excludes all liability for loss and damages arising therefrom. This publication is the copyrighted property of Colliers International and/or its licensor(s). ©2017. All rights reserved. 11/14/17

Colliers
INTERNATIONAL