



1111 North 13th Street | Omaha, NE

Mastercraft Building at Millwork Commons

The Millwork Commons neighborhood inspires and supports the work of innovators and creators — within the neighborhood and across the city

Tommy Culhane

Senior Associate
+1 402 763 1727
tommy.culhane@colliers.com

Chris Mensinger

Senior Vice President
+1 402 763 1755
chris.mensinger@colliers.com

Jeffrey Wyatt

EVP, Principal
+1 402 763 1747
jeffrey.wyatt@colliers.com





500 to
5,000
square feet
AVAILABLE

The Mastercraft Building at Millwork Commons

Collaboration & Innovation

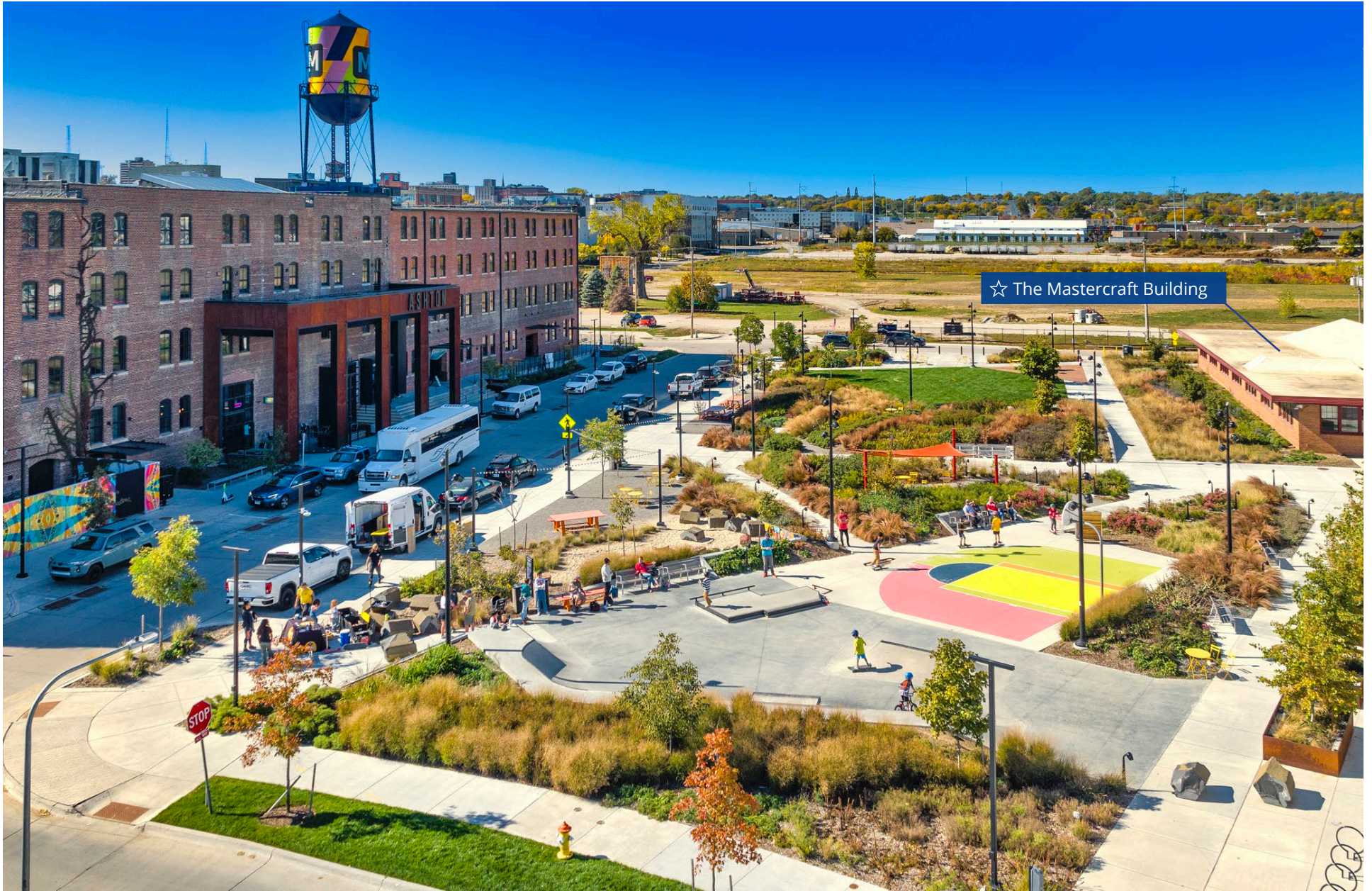
The Mastercraft Building is an energetic work and event space that draws a variety of creative professionals from design to architecture to IT and photography.

In a neighborhood full of people with diverse stories, creativity, and entrepreneurial spirit, innovation happens. Millwork Commons encourages collaboration and creates space for the innovators and creators of our time to meet

up and regularly run into one another so they can think together, solve problems, and support each other's work.

- Available spaces include smaller suites with All-In monthly pricing, to larger spaces (up to 5,000 SF) with traditional square foot pricing
- Join 60 businesses with entrepreneurial spirit and creative energy
- Use the shared common spaces where serendipitous collisions and collaboration spark to life





☆ The Mastercraft Building

Neighborhood



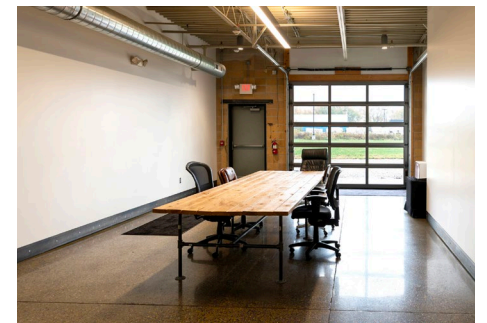
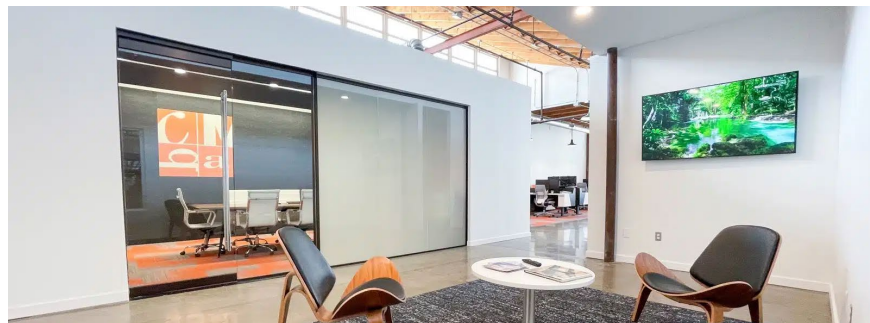
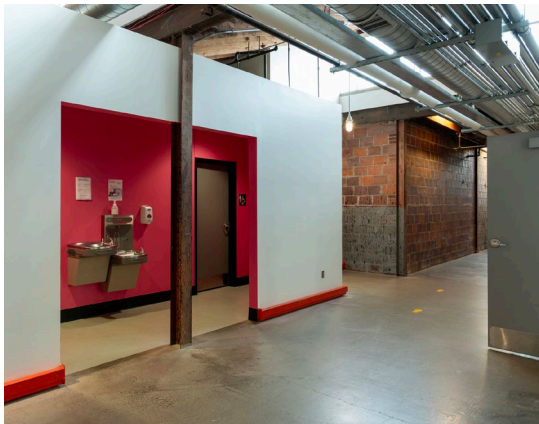
Quick access to thoroughfares



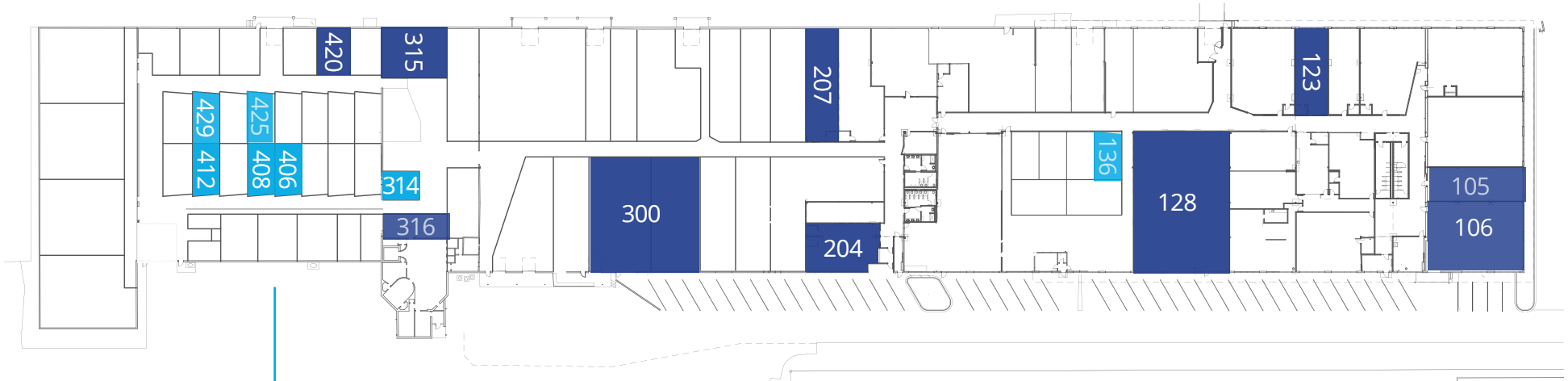
Scheduled events and experiences



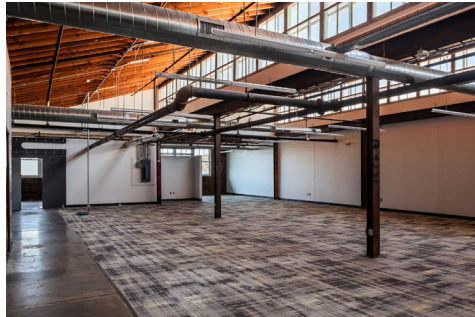
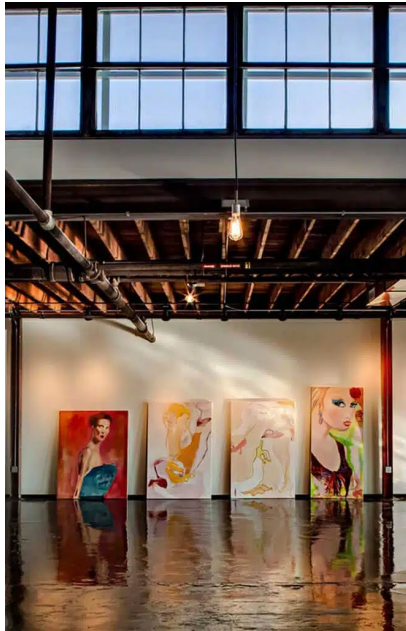
Park and green spaces



Floor Plan




SUITES WITH MODIFIED GROSS MONTHLY PRICING



SUITE	SIZE*	PRICE PSF
105	1,256 SF	\$13.00, NNN
106	2,516 SF	\$13.00, NNN
123	1,080 SF	\$13.00, NNN
128	5,190 SF	\$13.00, NNN
204	1,075 SF	\$13.00, NNN
207	1,373 SF	\$13.00, NNN
300	5,540 SF	\$13.00, NNN
315	1,209 SF	\$13.00, NNN
316	727 SF	\$13.00, NNN
420	655 SF	\$13.00, NNN

(Budgeted 2026 NNN Expenses - \$8.41)

SUITE	SIZE*	MONTHLY PRICE
136	430 SF	\$800
314	534 SF	\$800
406	534 SF	\$800
408	534 SF	\$800
412	534 SF	\$800
425	534 SF	\$800
429	534 SF	\$800


 With **5+ year terms**, Landlord may contribute to tenant improvements.

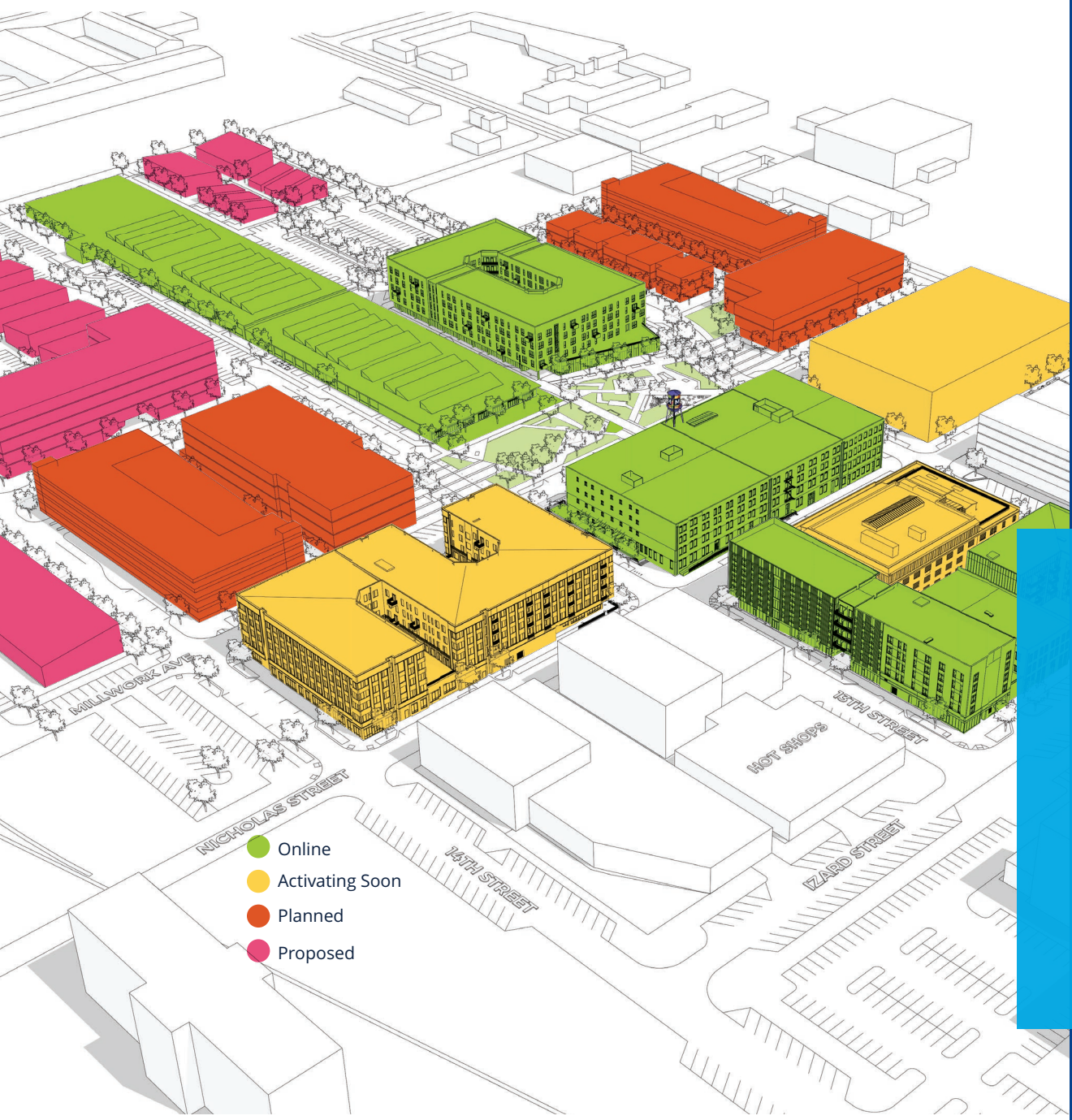
* Approximate size

Vibrant Location

Millwork Commons is positioned next to all that's exciting and happening in Omaha.

- Arts and culture venues
- Living and hospitality
- Dining and entertainment
- Outdoor spaces and parks
- Education and business





Millwork Commons Future Development

- Planned residential units to total 700
- Expected retail and hospitality square footage to total 136,700
- Potential site for large office headquarters
- Garage planned for additional parking

1,150,000
square feet
by 2027+



1111 North 13th Street | Omaha, NE

Tommy Culhane

Senior Associate
+1 402 763 1727
tommy.culhane@colliers.com

Chris Mensinger

Senior Vice President
+1 402 763 1755
chris.mensinger@colliers.com

Jeffrey Wyatt

EVP, Principal
+1 402 763 1747
jeffrey.wyatt@colliers.com

This document has been prepared by Colliers for advertising and general information only. Colliers makes no guarantees, representations or warranties of any kind, expressed or implied, regarding the information including, but not limited to, warranties of content, accuracy and reliability. Any interested party should undertake their own inquiries as to the accuracy of the information. Colliers excludes unequivocally all inferred or implied terms, conditions and warranties arising out of this document and excludes all liability for loss and damages arising there from. This publication is the copyrighted property of Colliers and/or its licensor(s). Copyright © 2025. All rights reserved. This communication is not intended to cause or induce breach of an existing listing agreement. Colliers Nebraska



[colliers.com](https://www.colliers.com)