

FOR LEASE > LOFT STYLE OFFICE SPACE

The Northern Light Tower

1010 WESTERN AVENUE, PITTSBURGH, PA 15233



Property Highlights

- > 3rd Floor | 3,875 RSF
- > 4th Floor | 5,700 RSF available 7/1/2018
 - can be combined for 9,575 RSF contiguous
- > Two free parking spaces per 1,000 RSF
 - additional parking available for nominal fee
- > Exterior Signage Opportunity
- > Roof deck for exclusive tenant and client use that includes rooftop golf range.
- > Significant natural light with breathtaking views of Pittsburgh's skyline
- > Dramatic exposed brick walls, ceilings and HVAC
- > High tech security
- > Fully equipped multimedia conference center
- > Spectacular glass walled elevator with city view
- > Gated surface parking and indoor heated garage
- > Easy access to Downtown, West End Bridge, I-376, I-279, Route 65 and Route 19
- > 1/4 mile to Heinz Field & 2 mile to PNC Park

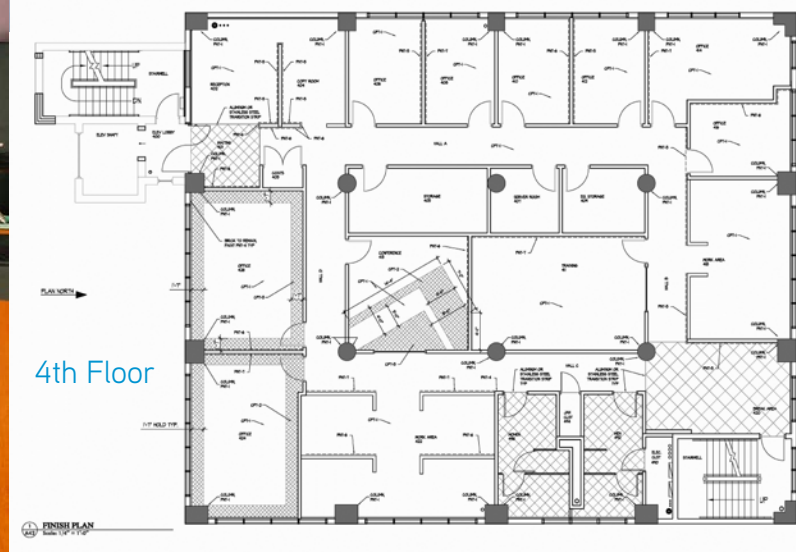
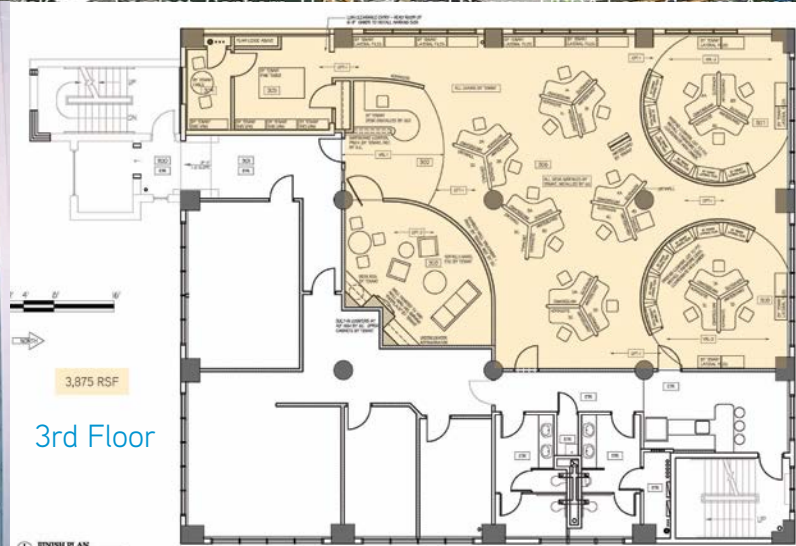
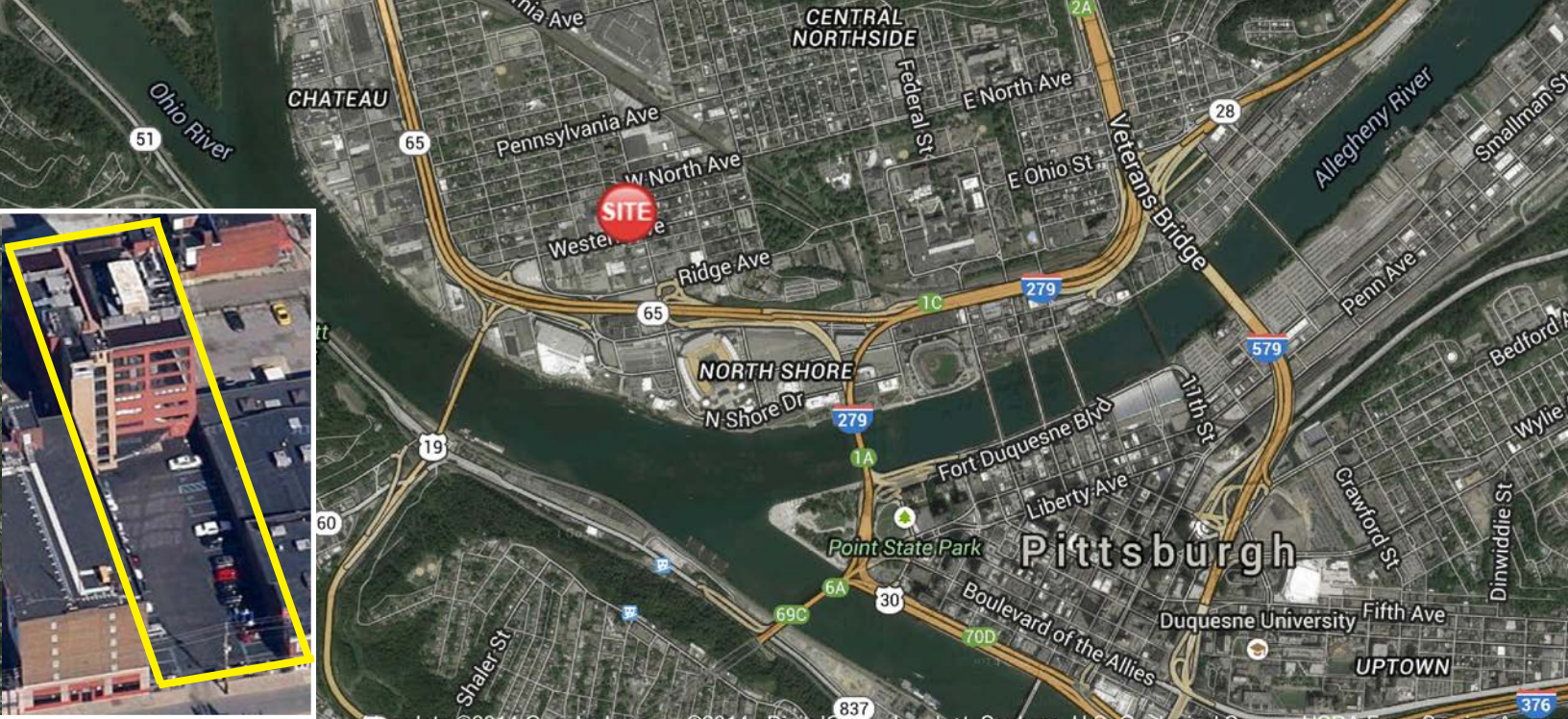


View from rooftop deck

PAUL HORAN
FOUNDING PRINCIPAL | PITTSBURGH
OFFICE BROKERAGE
412 321 4200 | EXT. 205
paul.horan@colliers.com

EDWARD LAWRENCE
PRINCIPAL | PITTSBURGH
OFFICE BROKERAGE
412 321 4200 | EXT. 213
ed.lawrence@colliers.com

MAMADOU BALDÉ Esq.
VICE PRESIDENT | PITTSBURGH
OFFICE BROKERAGE
412 321 4200 | EXT. 224
mamadou.balde@colliers.com



The information contained herein has been given to us by the owner of the property or other sources we deem reliable. We have no reason to doubt its accuracy, but we do not guarantee it. All information should be verified prior to purchase or lease.

