



VIEW ONLINE 

colliers.com/en

Asking Price:

\$22.00

Full Service

FOR LEASE | 1955 WEST GROVE PARKWAY PLEASANT GROVE, UTAH | USA

SYNERGY BUILDING

- STE 100 - 9,725 SF, Office and Includes small retail floor, with storage
- STE 300—9,555 SF, Office Space Just off the Pleasant Grove Interchange
- Class A office space
- Available Now
- Crown Signage Available

Cody Black
+1 801 687 0094
cody.black@colliers.com

Shad Webb
+1 435 459 0212
shad.webb@colliers.com

Colliers International
2100 Pleasant Grove Blvd. | Suite 200
Pleasant Grove, UT 84062
P: +1 801 610 1300



Accelerating success.



This document has been prepared by Colliers International for advertising and general information only. Colliers International makes no guarantees, representations or warranties of any kind, expressed or implied, regarding the information including, but not limited to, warranties of content, accuracy and reliability. Any interested party should undertake their own inquiries as to the accuracy of the information. Colliers International excludes unequivocally all inferred or implied terms, conditions and warranties arising out of this document and excludes all liability for loss and damages arising there from. This publication is the copyrighted property of Colliers International and/or its licensor(s). ©2017. All rights reserved.



Area Demographics (2017)

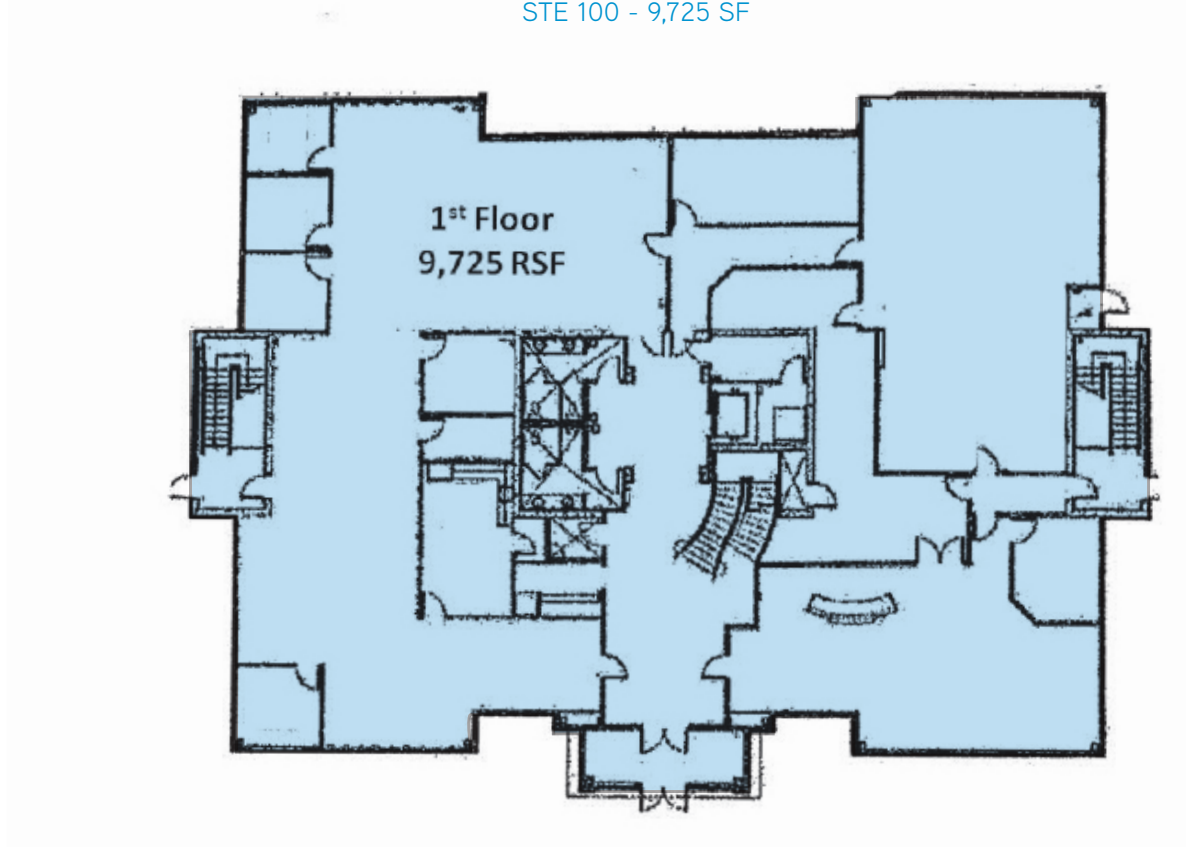


VIEW ONLINE 

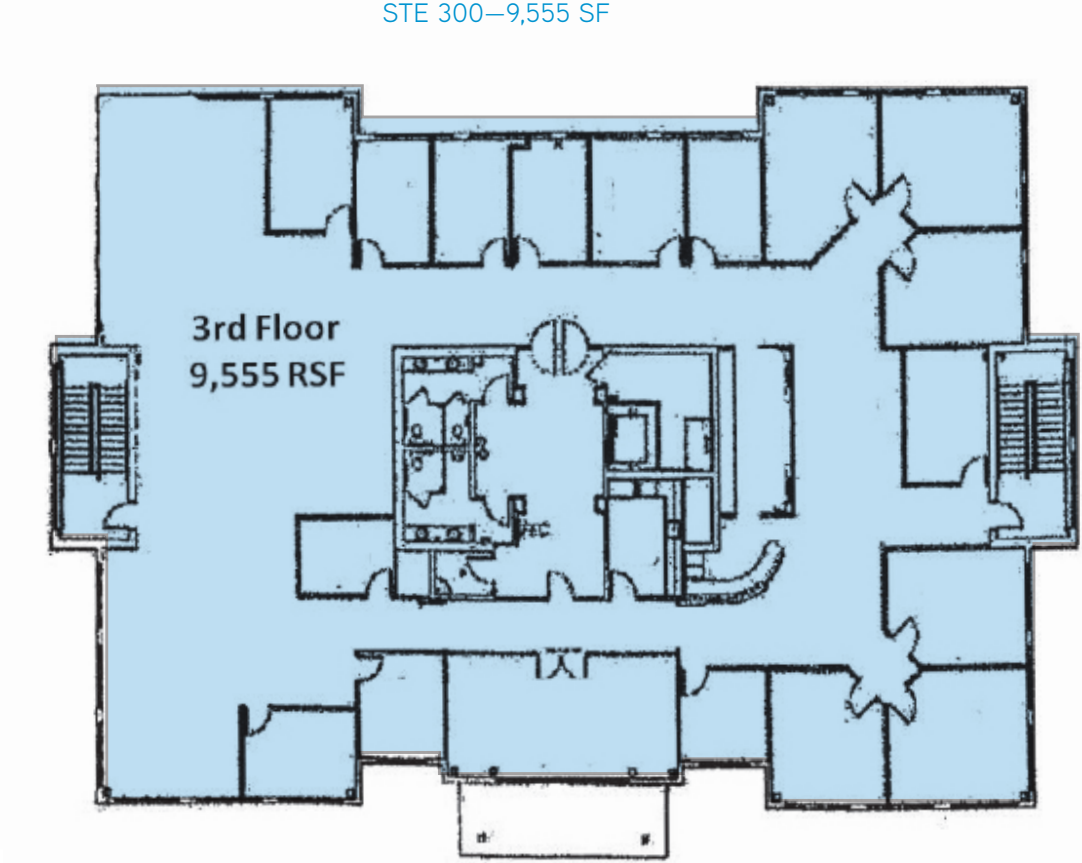


Accelerating success.

FLOORPLAN:
STE 100 - 9,725 SF



FLOORPLAN:
STE 300—9,555 SF



Asking Price:
\$22.00
Full Service

