

# OFFICE SPACE FOR LEASE

12075 N Corporate Parkway  
Mequon | WI

**MIKE WANEZEK**

414 278 6826 (direct)  
920 265 3747 (mobile)  
mike.wanezek@colliers.com

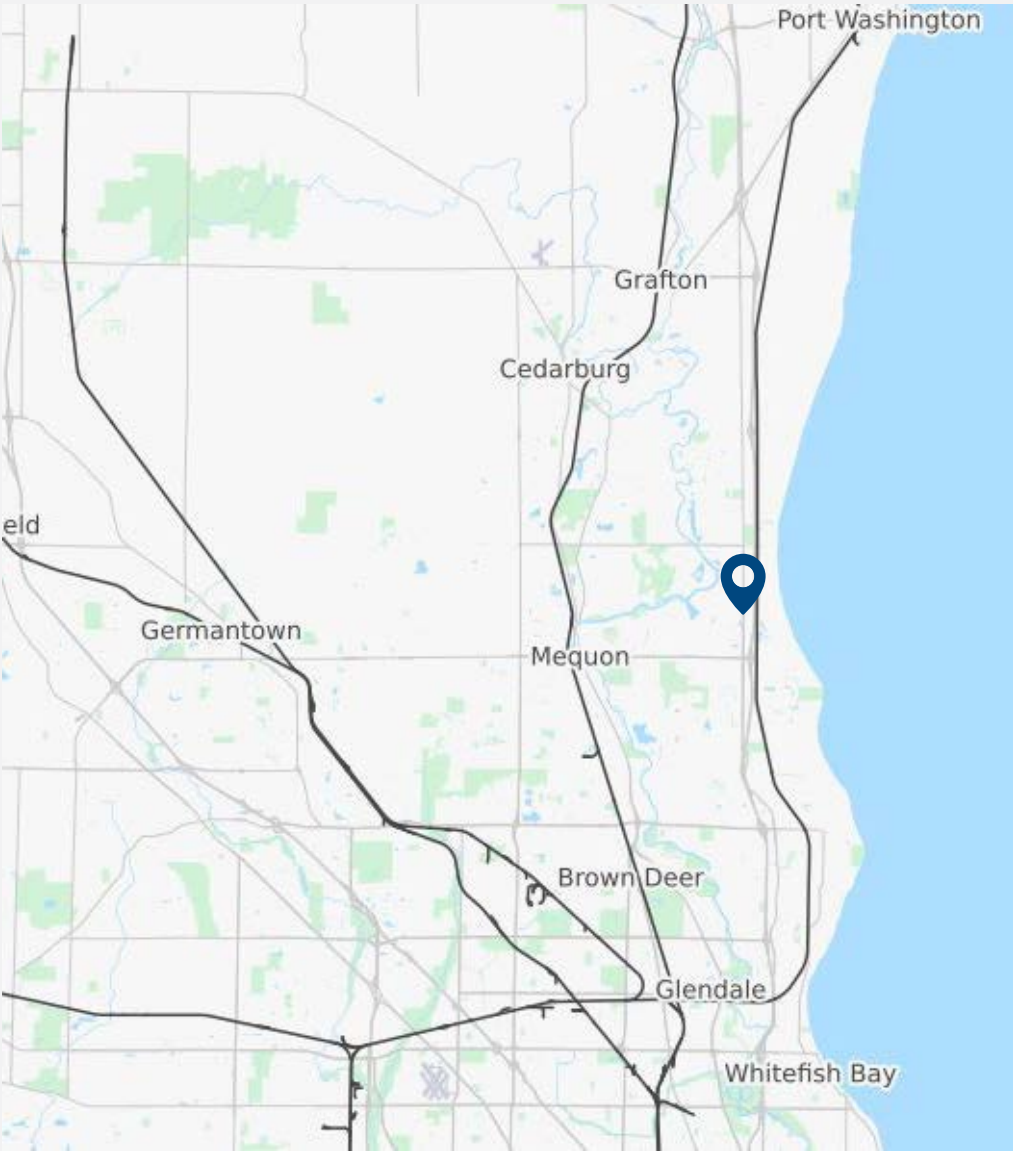
**MATT FAHEY**

414 278 6860(direct)  
773 910 2483 (mobile)  
matt.fahey@colliers.com

Colliers International  
833 E Michigan Street | Suite 500  
Milwaukee, WI 53202  
P: +1 414 276 9500



LOCATION



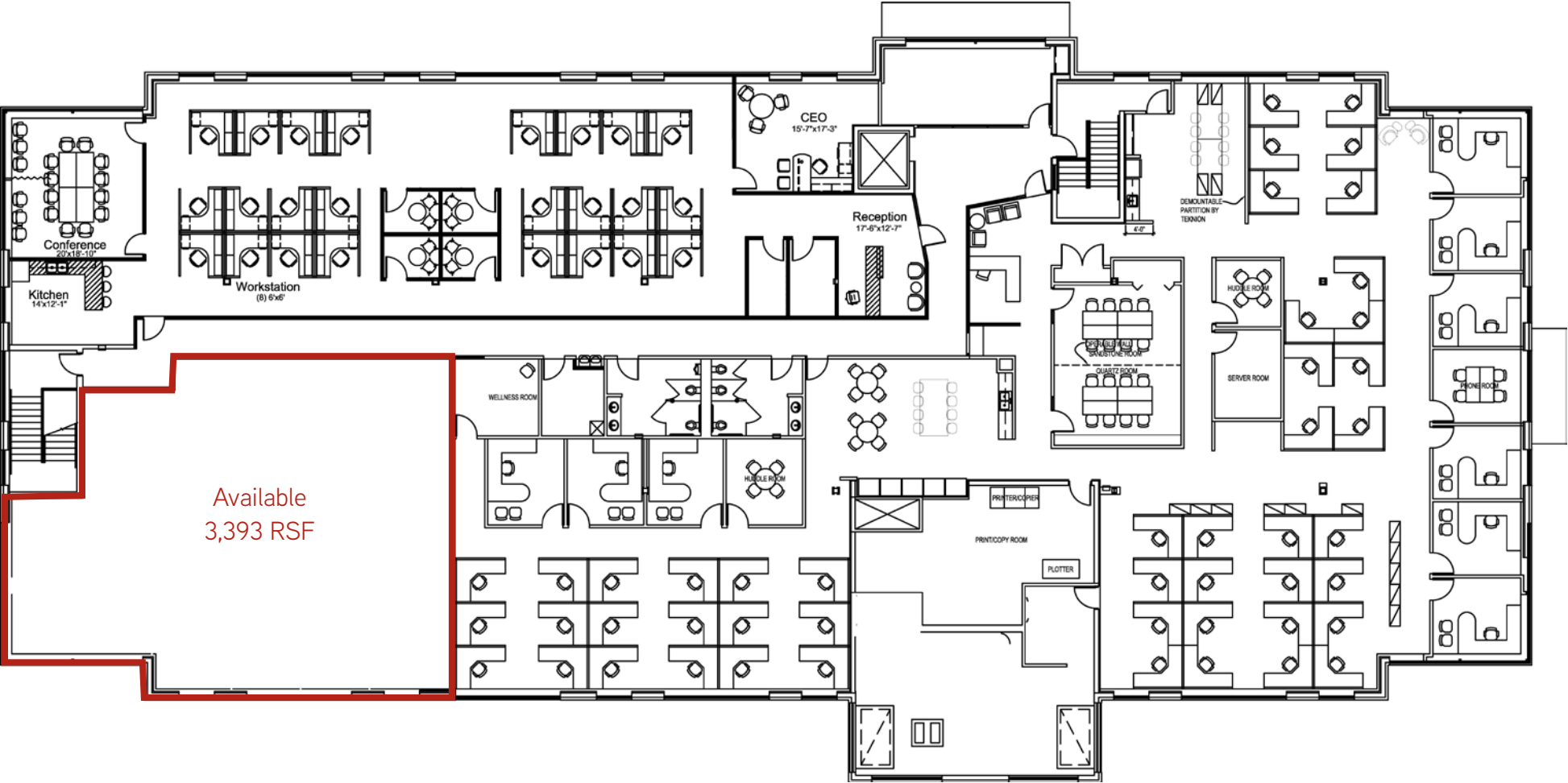
BUILDING SPECIFICATIONS

Available Space:	3,393 RSF
Building Size:	40,834 SF
Stories:	2
Year Built:	2003
Parking:	+ 4.00/1,000 SF
Signage:	Monument on Port Washington Rd
Opex Estimate:	\$7.10/SF

\$13.00  
PSF NNN

PROPERTY HIGHLIGHTS

- Excellent access to I-43 via Mequon Road
- Professionally managed and maintained
- Immediate Occupancy with move-in ready space!





FOR LEASE 12075 N Corporate Parkway // Mequon // WI

[colliers.com/wisconsin](http://colliers.com/wisconsin)



**MIKE WANEZEK**

414 278 6826 (direct)  
920 265 3747 (mobile)  
[mike.wanezek@colliers.com](mailto:mike.wanezek@colliers.com)

**MATT FAHEY**

414 278 6860(direct)  
773 910 2483 (mobile)  
[matt.fahey@colliers.com](mailto:matt.fahey@colliers.com)

This document has been prepared by Colliers International for advertising and general information only. Colliers International makes no guarantees, representations or warranties of any kind, expressed or implied, regarding the information including, but not limited to, warranties of content, accuracy and reliability. Any interested party should undertake their own inquiries as to the accuracy of the information. Colliers International excludes unequivocally all inferred or implied terms, conditions and warranties arising out of this document and excludes all liability for loss and damages arising there from. This publication is the copyrighted property of Colliers International and/or its licensor(s). ©2017. All rights reserved.

Colliers International  
833 E Michigan Street | Suite 500  
Milwaukee, WI 53202  
P: +1 414 276 9500

