



Ritchie Medical Plaza

Property Overview

- › Building Address: 310 North Smith Avenue
St. Paul, MN 55102
- › Building Size: 52,116 sq ft
- › Space Available: 6,875 sq ft
- › Building Tenants: MOPA, Children's, Allina, Surgery Center,
Orthotic Care Services

Healthcare Services Group

LOUIS SUAREZ ccim
952 837 3061
louis.suarez@colliers.com

BRIAN BRUGGEMAN ccim
952 837 3079
brian.bruggeman@colliers.com

Owned and Managed by



www.colliers-healthcareservicesmn.com

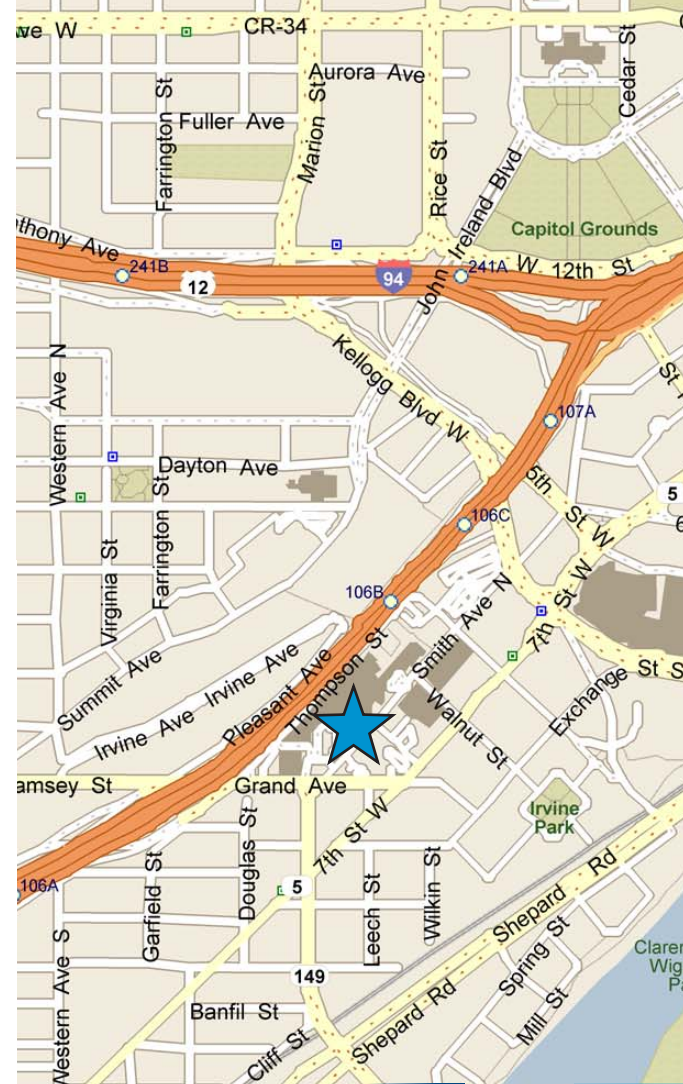
3RD FLOOR

SUITE 340
1,308 SF

SUITE 320
2,393 SF

4TH FLOOR

SUITE 440
3,174 SF



Property Details

- › Total building size 52,116 sf
- › Convenient location on United and Children's Hospital campus
- › Easy access to hospitals via tunnel and skyway
- › Direct access to underground parking
- › Attractive net rates and TI allowances
- › Close to I-35E and I-94 freeway entrances
- › Anchor tenants: MOPA, Children's, Allina, Surgery Center, Orthotic Care Services



Healthcare Services Group

LOUIS SUAREZ ccim
952 837 3061
louis.suarez@colliers.com

BRIAN BRUGGEMAN ccim
952 837 3079
brian.bruggeman@colliers.com

Owned and Managed by



www.colliers-healthcareservicesmn.com



Ritchie Medical Plaza

PROPERTY ADDRESS:

310 North Smith Avenue
St. Paul, MN 55102

BUILDING SQUARE FEET

52,116 square feet total

CURRENTLY AVAILABLE:

3rd Floor: 3,701 square feet
4th Floor: 3,174 square feet
Total: 6,875 square feet

MINIMUM DIVISIBLE/ MAXIMUM CONTIGUOUS:

2,000 square feet/3,166 square feet

FLOORS/ TYPICAL FLOOR SIZE:

Four (4)/13,000 square feet

YEAR BUILT:

1990

PARKING:

- Attached parking in ramp
- Adjoining surface lot
- Discounted tenant rate

NET RENTAL RATES:

\$19.00 - \$23.00 per square foot

2016 EST. CAM & REAL ESTATE TAX:

\$ 15.84 per square foot CAM
\$ 5.94 per square foot Tax
\$ 21.78 total per square foot

AMENITIES:

- Skyway access to United Hospital
- Easy access to I-35E, I-494, I-94
- Located on hospital campus / medical office building complex
- Conveniently close to downtown St. Paul shopping, dining, lodging and service amenities
- Excellent visibility
- Competitive rates and tenant improvement allowances available

ANCHOR TENANTS:

- MOPA
- Children's Healthcare
- Allina Health Systems
- Surgery Center
- Orthotic Care Services

Healthcare Services Group

LOUIS SUAREZ CCIM
952 837 3061
louis.suarez@colliers.com

BRIAN BRUGGEMAN CCIM
952 837 3079
brian.bruggeman@colliers.com

Owned and Managed by:



www.colliers-healthcareservicesmn.com



ALLINA HEALTH

United Hospital

333 NORTH SMITH AVENUE, ST. PAUL, MN 55102

CAMPUS OVERVIEW:

Allina's United Hospital, the largest hospital in the Twin Cities east metro area, provides a full range of health care and is recognized nationally and locally for its expertise and care. United Hospital serves more than 200,000 patients and their families each year.

TOTAL BEDS:

398 (546 licensed)



CHILDREN'S HOSPITALS AND CLINICS OF MINNESOTA

Children's Hospital – St. Paul

345 NORTH SMITH AVENUE, ST. PAUL, MN 55102

CAMPUS OVERVIEW:

Recently part of a \$300 million expansion and modernization project Children's – St. Paul is a state-of-the-art, 12-room Level II Neonatal Intensive Care Unit (NICU).

TOTAL BEDS:

169



COLLIERS INTERNATIONAL
900 2nd Avenue South, Suite 550
Minneapolis, MN 55402

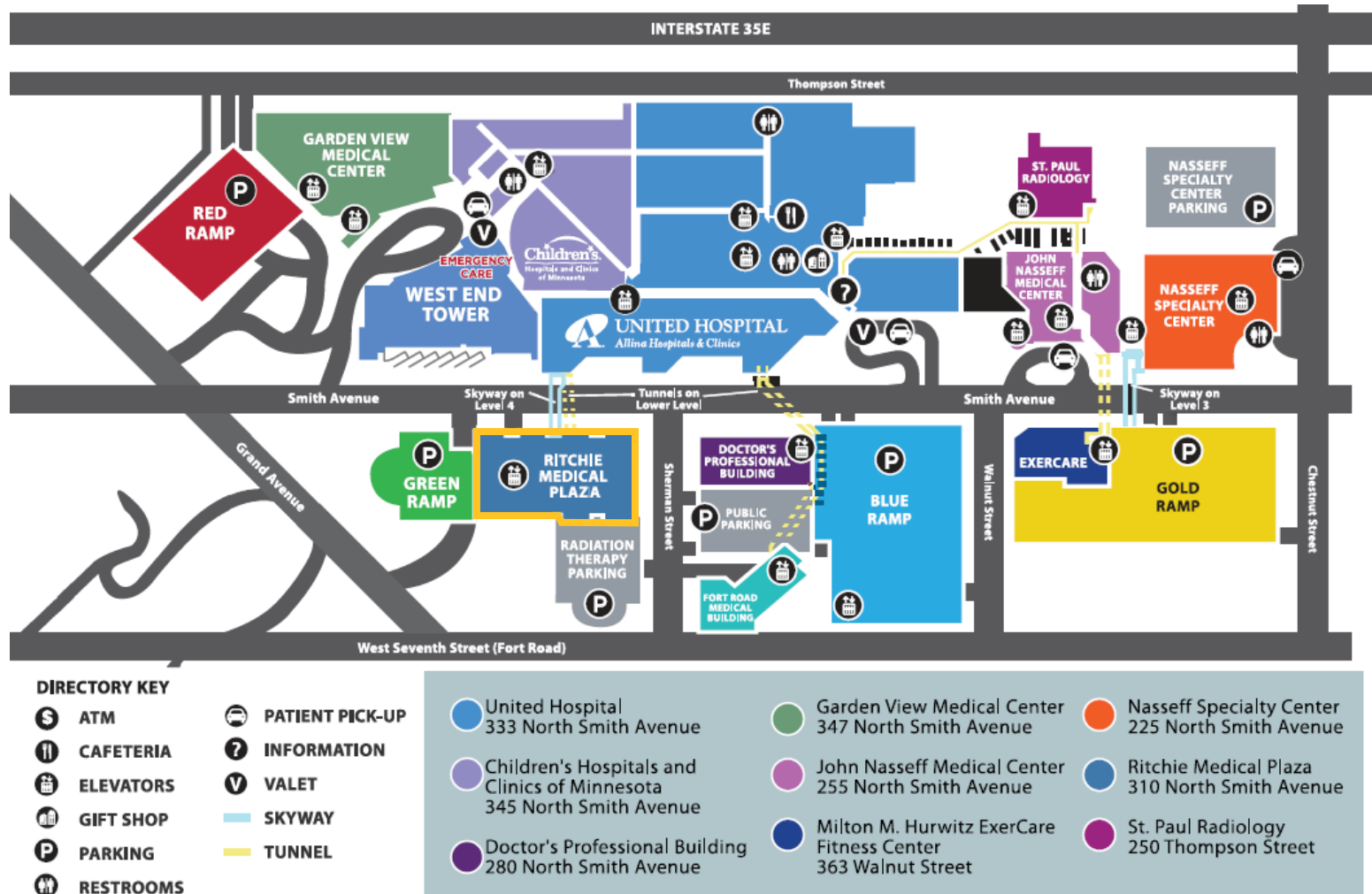
www.colliers.com

Ritchie Medical Plaza

310 NORTH SMITH AVENUE, ST. PAUL, MN 55102



HOSPITAL CAMPUS MAP



LOUIS SUAREZ, ccim
952 837 3061
louis.suarez@colliers.com

BRIAN BRUGGEMAN
952 837 3079
brian.bruggeman@colliers.com

Ritchie Medical Plaza

310 NORTH SMITH AVENUE, ST. PAUL, MN 55102



3RD FLOOR

SUITE 340

1,308 SF

SUITE 320

2,393 SF



LOUIS SUAREZ CCIM
952 837 3061
louis.suarez@colliers.com

BRIAN BRUGGEMAN CCIM
952 837 3079
brian.bruggeman@colliers.com

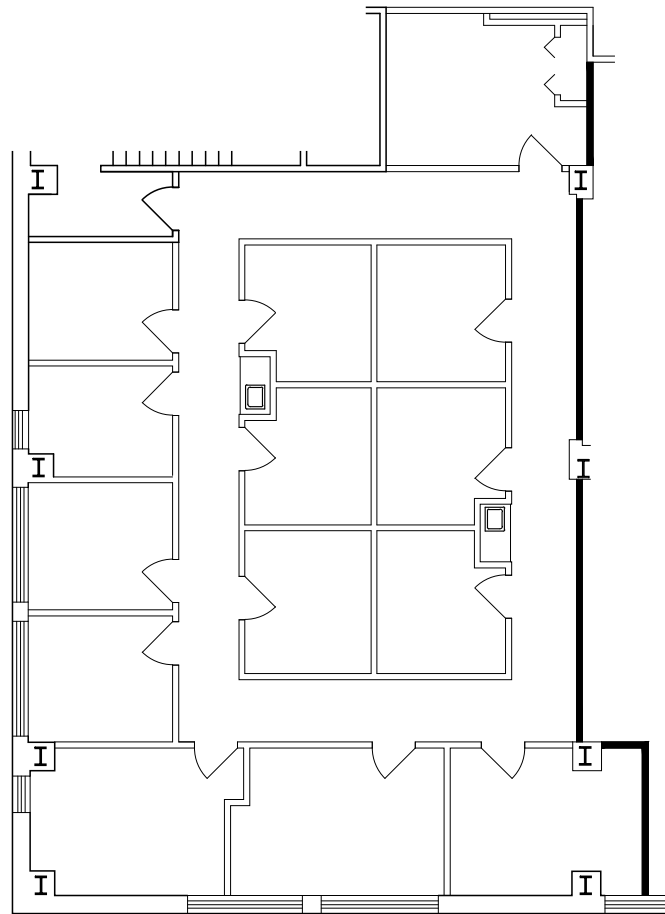
Ritchie Medical Plaza

310 NORTH SMITH AVENUE, ST. PAUL, MN 55102



SUITE 320

2,393 SF



LOUIS SUAREZ CCIM
952 837 3061
louis.suarez@colliers.com

BRIAN BRUGGEMAN CCIM
952 837 3079
brian.bruggeman@colliers.com

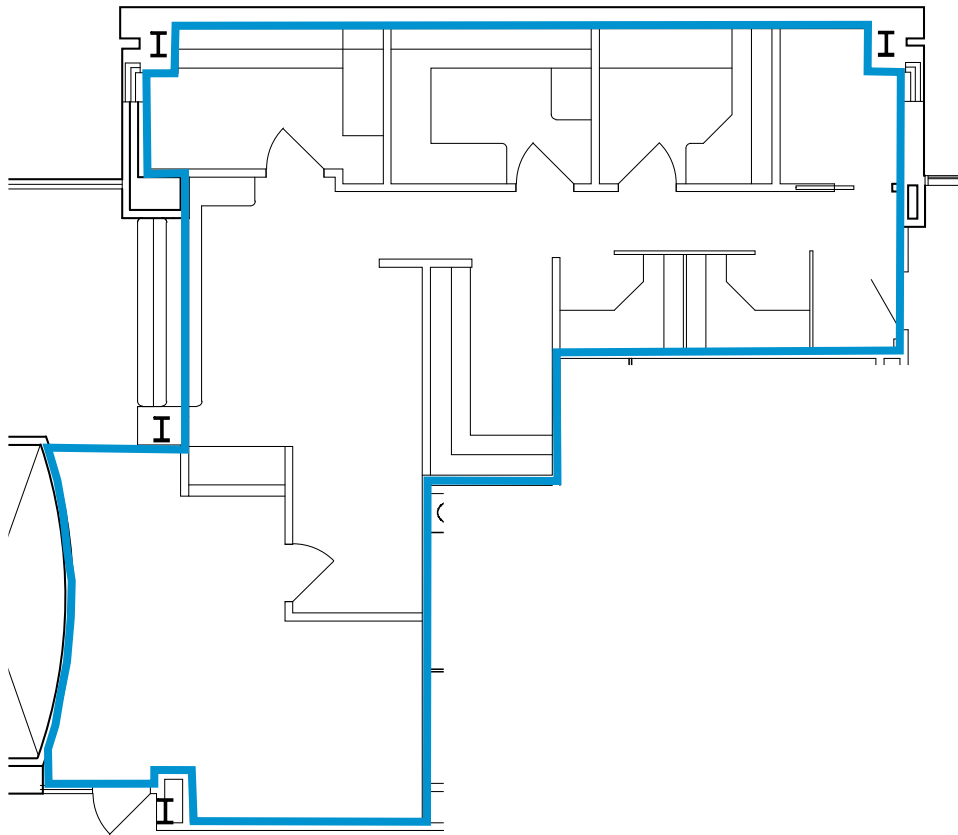
Ritchie Medical Plaza

310 NORTH SMITH AVENUE, ST. PAUL, MN 55102



SUITE 340

1,308 SF



LOUIS SUAREZ CCIM
952 837 3061
louis.suarez@colliers.com

BRIAN BRUGGEMAN CCIM
952 837 3079
brian.bruggeman@colliers.com

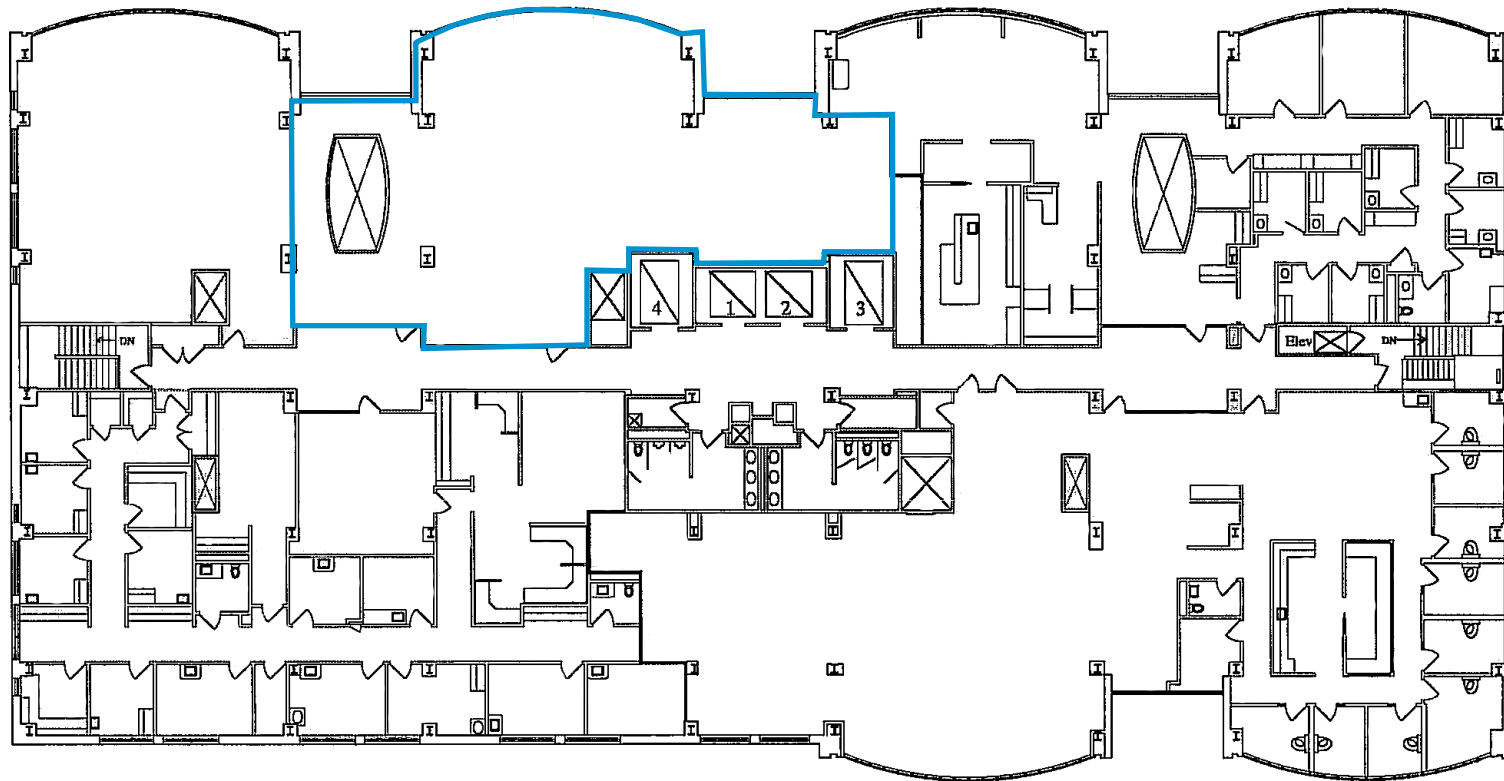
Ritchie Medical Plaza

310 NORTH SMITH AVENUE, ST. PAUL, MN 55102



4TH FLOOR

SUITE 440
3,174 SF



LOUIS SUAREZ CCIM
952 837 3061
louis.suarez@colliers.com

BRIAN BRUGGEMAN CCIM
952 837 3079
brian.bruggeman@colliers.com