

VIEW ONLINE 

colliers.com/hartford



INDUSTRIAL/FLEX - REDUCED SALE PRICE



FOR SALE | 20 NORTHWOOD DRIVE | BLOOMFIELD 06002

20 Northwood Drive, an 8,000 square foot industrial/flex building in Bloomfield, is an excellent property for a small business. The office area includes a conference room, kitchenette, 7 window offices and a common area. The building has two loading docks and a small drive-in door in the rear. The building demises in half very easily for an owner who wants to use half and lease out the remainder.

- 8,000 SF industrial/flex building
- 12+ parking spaces
- 1 acre lot
- Conference room, kitchenette, 7 window offices & common area
- 2,400 SF air-conditioned office
- Two loading docks (8'x8' & 8'x10')
- Drive-in door in rear
- I-2 zoning

Sale Price

\$299,500



BIFF ZOEPHEL

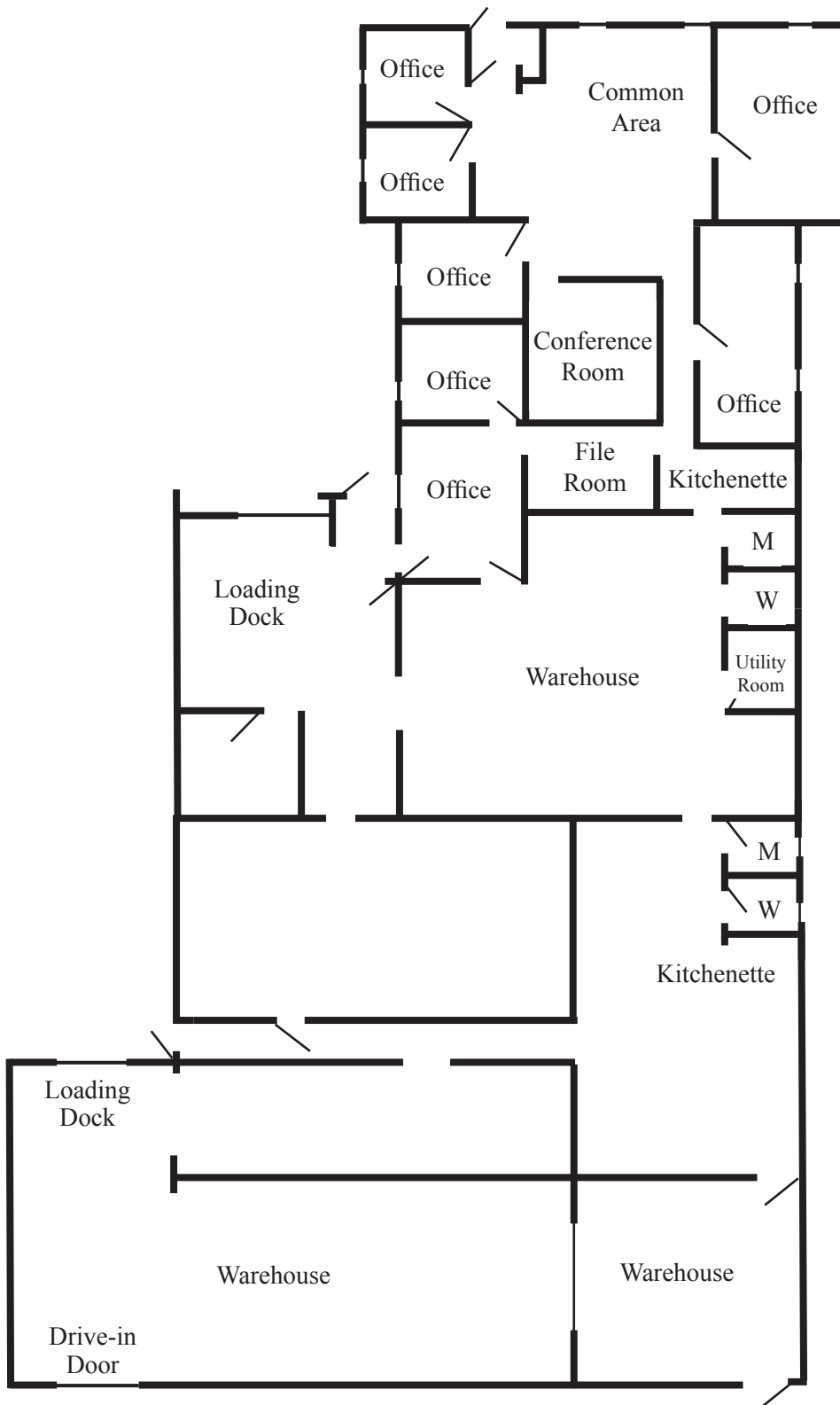
860 616 4032
Hartford, CT
biff.zoepfel@colliers.com

NICHOLAS R. MORIZIO, CRE, SIOR

860 616 4022
Hartford, CT
nicholas.morizio@colliers.com

COLLIERS INTERNATIONAL
864 Wethersfield Avenue
Hartford, CT 06114
www.colliers.com/hartford

FOR SALE | 20 NORTHWOOD DRIVE | BLOOMFIELD 06002



BIFF ZOEPHEL
860 616 4032
Hartford, ct
biff.zoephel@colliers.com

NICHOLAS R. MORIZIO, CRE, SIOR
860 616 4022
Hartford, ct
nicholas.morizio@colliers.com



COLLIERS INTERNATIONAL
864 Wethersfield Avenue
Hartford, CT 06114
www.colliers.com/hartford

This document has been prepared by Colliers International for advertising and general information only. Colliers International makes no guarantees, representations or warranties of any kind, expressed or implied, regarding the information including, but not limited to, warranties of content, accuracy and reliability. Any interested party should undertake their own inquiries as to the accuracy of the information. Colliers International excludes unequivocally all inferred or implied terms, conditions and warranties arising out of this document and excludes all liability for loss and damages arising there from. This publication is the copyrighted property of Colliers International and/or its licensors(s). ©2017. All rights reserved.