

# MAPLE RESEARCH PARK



 Over 200,000  
available SF

1650-  
1965 RESEARCH DRIVE  
**TROY, MI**



## PROPERTY HIGHLIGHTS

- Newly Redeveloped Technology Park
- Recently Remodeled Building Interiors and Ready for Tenant Finishes To Suit
- Easy Access to I-75 and Ample Parking Within the Complex
- Large Blocks of Space With Potential to Accommodate Up to 200,000 SF



**GREAT I-75 VISIBILITY  
AND SIGNAGE  
OPPORTUNITY**

## CONTACT US



**GARY P. GROCHOWSKI, SIOR**  
SENIOR VICE PRESIDENT | DIRECTOR OF AGENCY LEASING  
PHONE: (248) 540-1000 EXT: 1856  
gary.grochowski@colliers.com

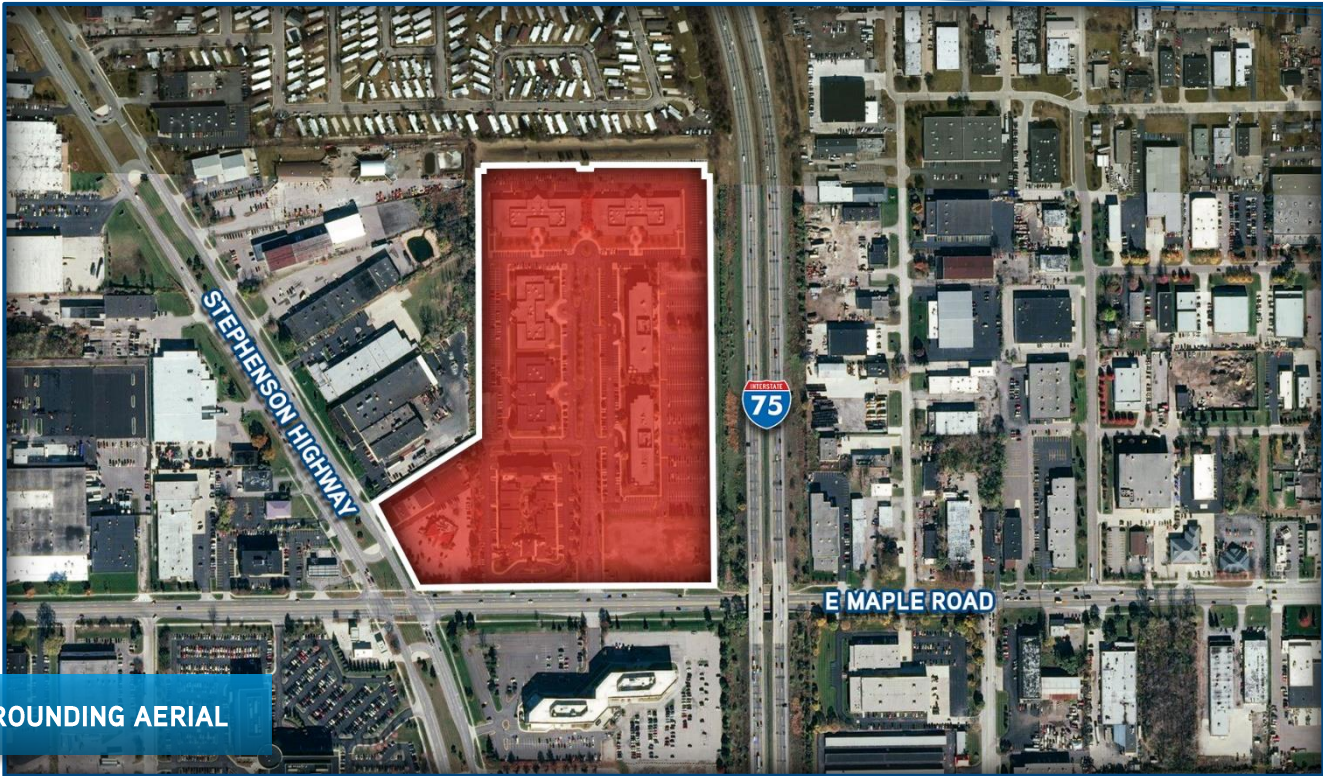


**BRYAN BARNAS**  
ASSOCIATE  
PHONE: (248) 540-1000 EXT: 1638  
bryan.barnas@colliers.com

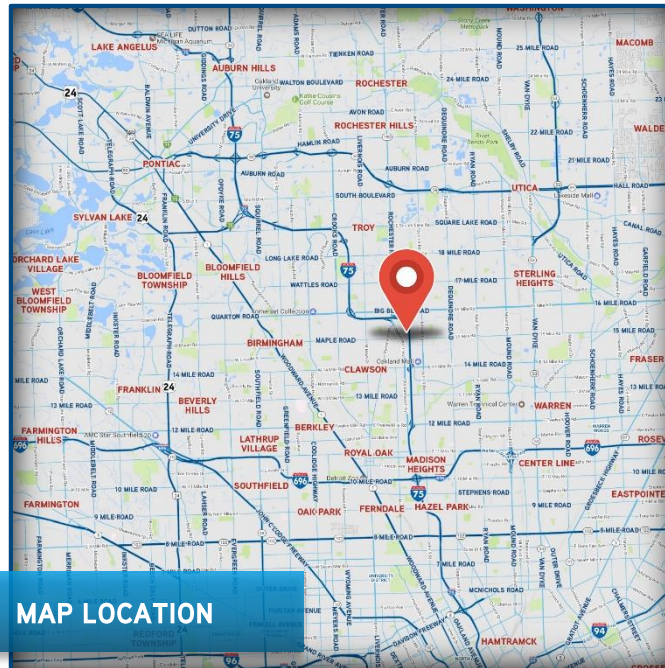




# PROPERTY LOCATION



SURROUNDING AERIAL



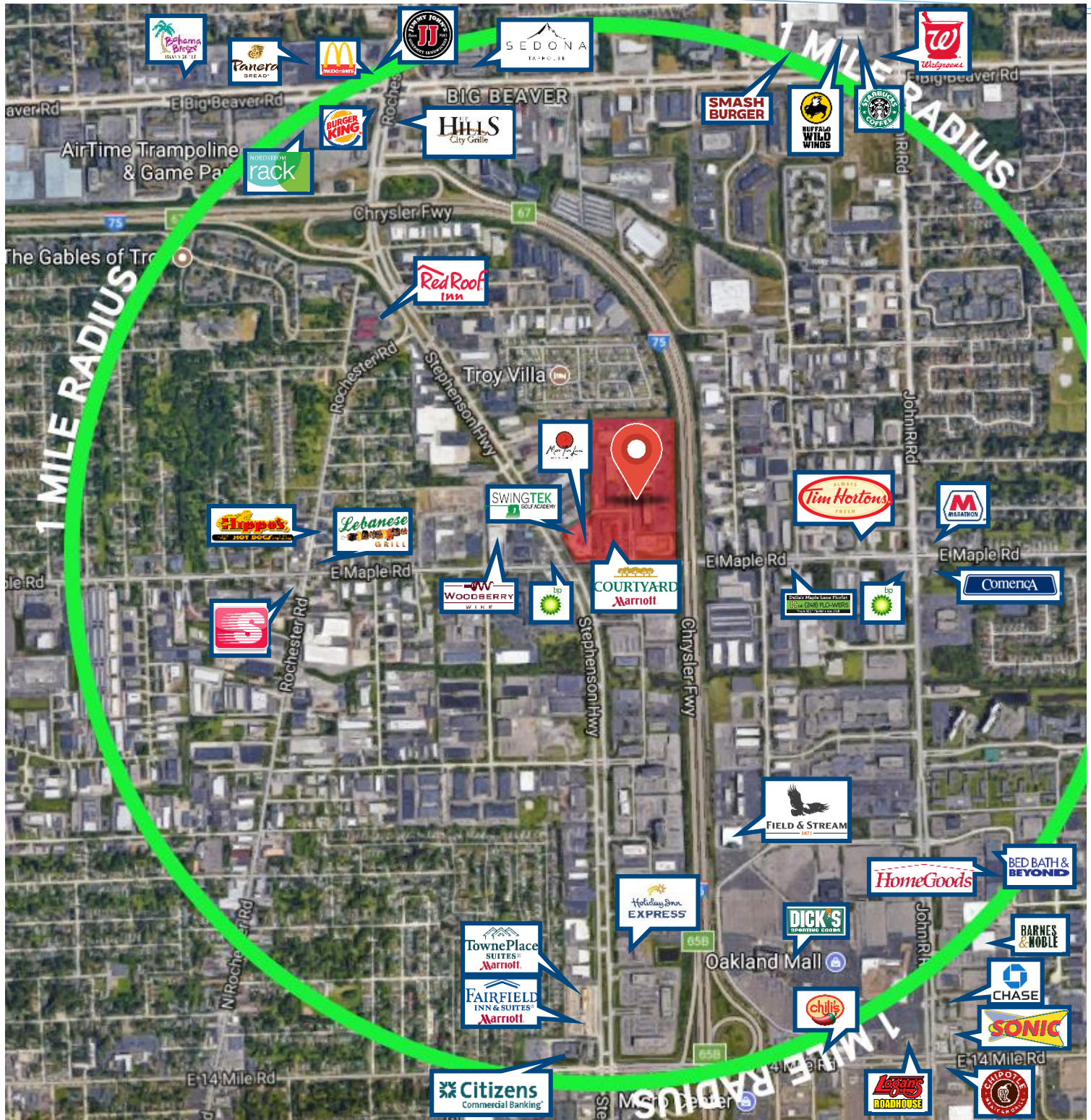
MAP LOCATION







# AREA AMENITIES



Ring indicates one mile radius



# SITE PLAN

## SITE PLAN



MAPLE  
RESEARCH  
PARK





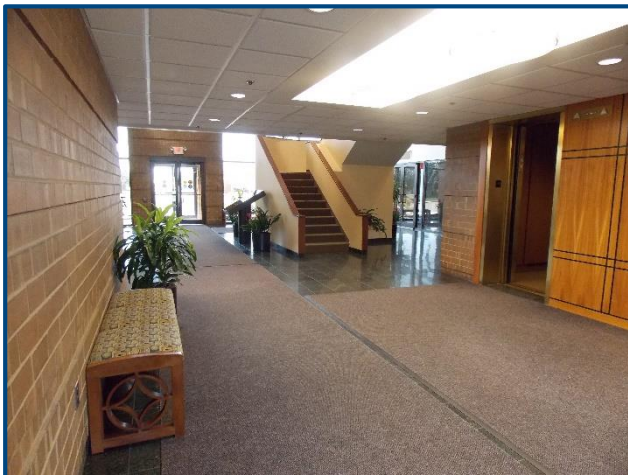
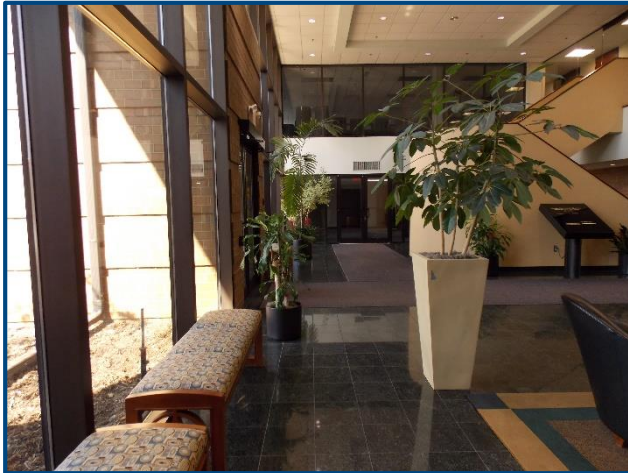
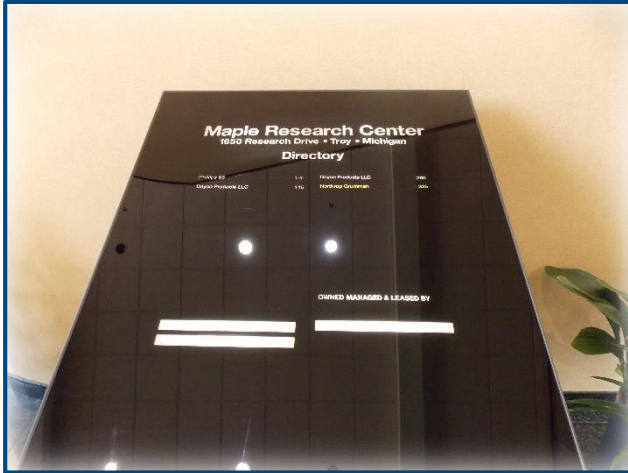
# PROPERTY PHOTOS







# PROPERTY PHOTOS





# AVAILABLE SPACES



BUILDING	SUITE	SF AVAILABLE	LEASE RATE/SF	OCCUPANCY
BUILDING I (1650)	Suite 125	5,990 SF	\$16.50 Gross + Electric	Immediate
BUILDING I (1650)	Suite 140	2,379 SF	\$16.50 Gross + Electric	Immediate
BUILDING I (1650)	Suite 150	10,667 SF	\$16.50 Gross + Electric	Immediate
BUILDING I (1650)	Suite 300	21,465 SF	\$16.50 Gross + Electric	Immediate
BUILDING II (1850)	Entire Building / Each Floor	79,950 SF / 26,650 SF	\$16.50 Gross + Electric	Immediate
BUILDING III (1960)	Entire Building	39,771 SF	\$9.95 NNN	Immediate
BUILDING V (1875)	Approx. One-Half of Building	15,060 SF	\$9.95 NNN	Immediate
BUILDING VI (1775)	Entire Building	30,450 SF	\$9.95 NNN	Immediate

