



For Lease

808 N Central Ave. Wood Dale, IL 60191

Contact us:

John D’Orazio

+1 847 384 2823
john.dorazio@colliers.com

Jonathan Kohn

+1 847 698 8279
jonathan.kohn@colliers.com

Tommy Karnig

+1 224 306 7699
tommy.karnig@colliers.com

Colliers

6250 N River Road, Suite 11-100
Rosemont, IL 60018

www.colliers.com/chicago

Two units available for Lease

Unit A

- Unit Size: 6,750 SF
- Office Size: 1,500 SF
- Ceiling Height: 16’
- Loading: 1 Dock
- Power: 200 A/240V 3-phase
- Sprinklers: Wet System
- Asking Price: \$14.75 MG
- Available: 2/1/2026

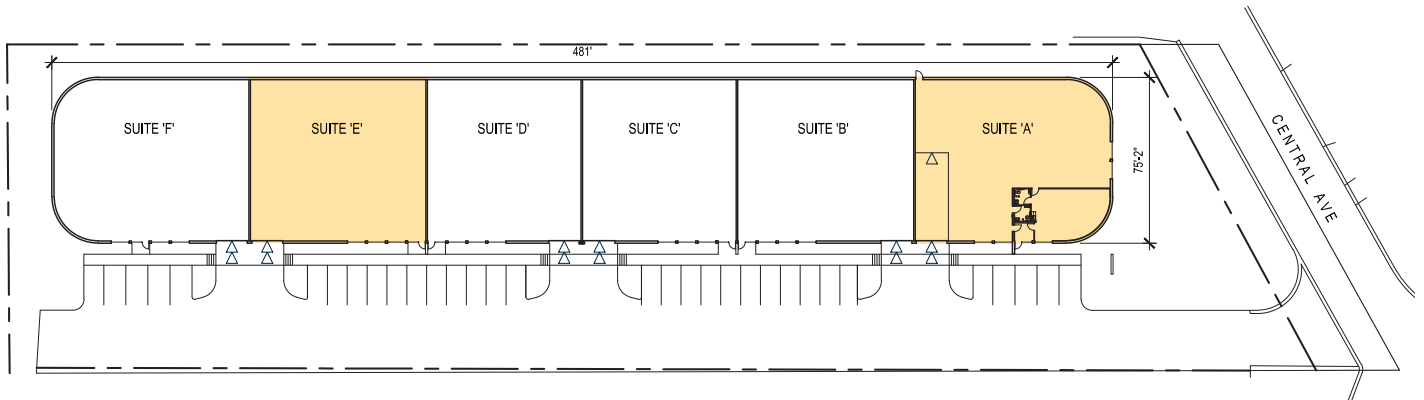
Unit E

- Unit Size: 6,000 SF
- Office Size: +-1,000 SF
- Ceiling Height: 16’
- Loading: 1 Dock
- Power: 200 A/240V 3-phase
- Sprinklers: Wet System
- Asking Price: \$14.75 MG
- Available: 4/1/2026

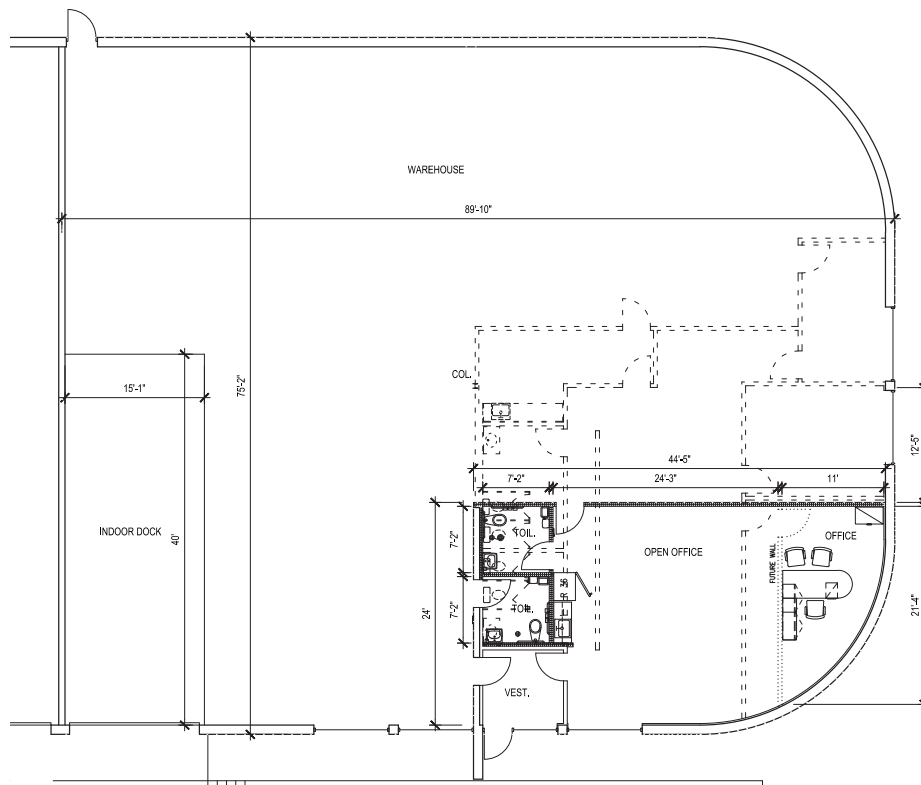
This document/email has been prepared by Colliers for advertising and general information only. Colliers makes no guarantees, representations or warranties of any kind, expressed or implied, regarding the information including, but not limited to, warranties of content, accuracy and reliability. Any interested party should undertake their own inquiries as to the accuracy of the information. Colliers excludes unequivocally all inferred or implied terms, conditions and warranties arising out of this document and excludes all liability for loss and damages arising therefrom. This publication is the copyrighted property of Colliers and /or its licensor(s). © 2026. All rights reserved. This communication is not intended to cause or induce breach of an existing listing agreement.

Property Drawings

Site Plan



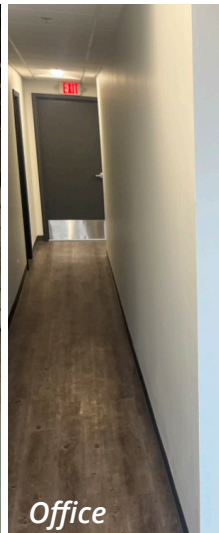
Floor Plan - Suite A



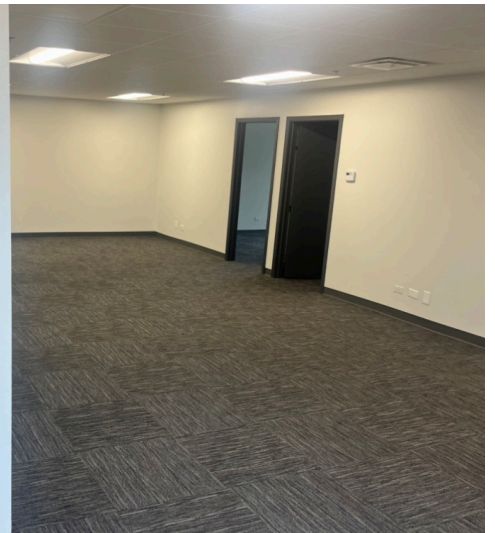
Property Gallery



Warehouse



Office



Property Location

808 N Central Avenue

