



FOR SALE/FOR LEASE

1501 Westport Road, Kansas City, MO

JIM GATES

+1 816 556 1138

jim.gates@colliers.com

ELLEN FISHER

+1 816 589 0012

ellen.fisher@colliers.com

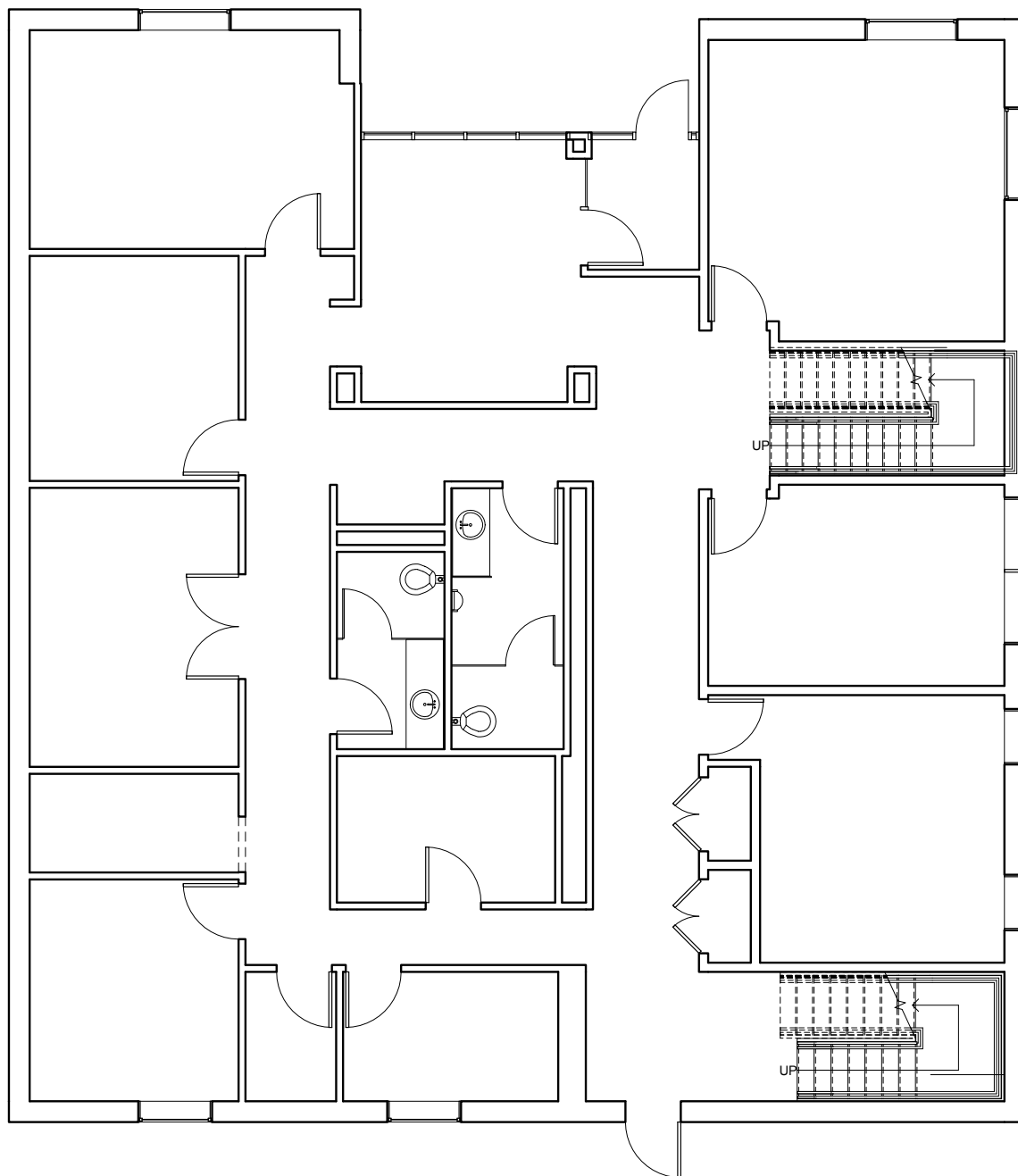
Key Features/Highlights

- › Building size: 4,667 SF
- › Lot size: 0.15 AC
- › Available space for lease: 4,667 SF
- › Min/max divisible: 3,000 - 4,667 SF
- › Parking: 12 parking spaces (private lot) and street parking adjacent to the building
- › Lease rate: \$16.00/SF net utilities & janitorial
- › Sale price: \$550,000

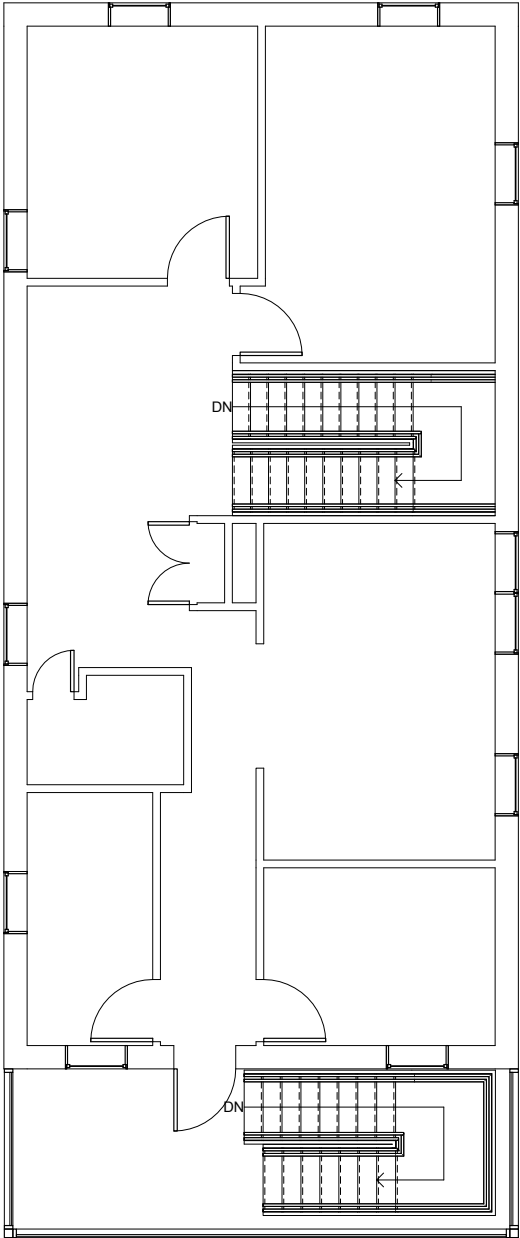


FOR SALE OR LEASE > 1501 Westport Road
Floorplans

FIRST FLOOR > 3183 SF



SECOND FLOOR > 1484 SF



FOR SALE OR LEASE > 1501 Westport Road

Photos



Contact Us

JIM GATES
+1 816 556 1138
jim.gates@colliers.com

ELLEN FISHER
+1 816 589 0012
ellen.fisher@colliers.com

Aerial



This document has been prepared by Colliers International for advertising and general information only. Colliers International makes no guarantees, representations or warranties of any kind, expressed or implied, regarding the information including, but not limited to, warranties of content, accuracy and reliability. Any interested party should undertake their own inquiries as to the accuracy of the information. Colliers International excludes unequivocally all inferred or implied terms, conditions and warranties arising out of this document and excludes all liability for loss and damages arising there from. This publication is the copyrighted property of Colliers International and/or its licensors(s). ©2017. All rights reserved.



COLLIERS INTERNATIONAL
4520 Main Street, Suite 1000
Kansas City, MO 64111
+1 816 531 5303
www.colliers.com