

Sublet Downtown Ann Arbor!

209-211 N Fourth Ave, Ann Arbor, MI 48104



Listing ID: 30406657
Status: Active
Property Type: Office For Lease
Office Type: Flex Space
Contiguous Space: 2,030 SF
Total Available: 2,030 SF
Lease Rate: \$3,600 (Monthly)
Unit Price: \$21.28 PSF (Annual)
Base Monthly Rent: \$3,600
Lease Type: Net Lease
Ceiling: 11 ft.



Overview/Comments

3rd floor sublet. Configured as 2 apartments; currently being used as an office space. Cannot be leased separately. Terrific finishes, historic details, updated bathrooms and kitchens. Walk out your front door into Kerrytown - great location! Close to downtown and M-14. Owner willing to take an extended lease past the sublet terms.

More Information Online

<http://www.cpix.net/listing/30406657>

QR Code

Scan this image with your mobile device:



General Information

Taxing Authority: City of Ann Arbor
Tax ID/APN: 09-09-29-134-013
Office Type: Flex Space, Other
Zoning: D2
Class of Space: Class B

Gross Building Area: 6,090 SF
Building/Unit Size (RSF): 2,030 SF
Usable Size (USF): 2,030 SF
Land Area: 0.05 SF

Available Space

Suite/Unit Number: 3
Suite Floor/Level: 3rd floor
Space Available: 2,030 SF
Minimum Divisible: 2,030 SF
Maximum Contiguous: 2,030 SF
Space Subcategory 1: Flex Space
Space Type: Sublet
Sublease Expiration Date: 08/31/2020

Date Available: 07/01/2019
Lease Rate: \$3,600 (Monthly)
Lease Type: Net Lease
Conference Rooms: 2
Offices: 2
Kitchen/Breakroom: Yes
Parking Spaces: 0

Area & Location

Property Located Between: Catherine & Ann Street
Property Visibility: Excellent
Highway Access: M-14, I-94, US-23

Airports: Detroit Metro, Willow Run & Ann Arbor Municipal
Area Description: Within the Kerrytown market area and downtown Ann Arbor.

Building Related

Total Number of Buildings: 1
Number of Stories: 3
Year Built: 1901
Roof Type: Flat

Construction/Siding: Brick
Parking Type: Other
Parking Description: on street parking
Total Parking Spaces: 0

Ceiling Height: 11
Loading Doors: 0
Loading Docks: 0
Passenger Elevators: 0
Freight Elevators: 0

Sprinklers: Wet
Heat Type: Natural Gas
Heat Source: Central
Air Conditioning: Package Unit
Internet Access: Cable, DSL

Land Related

Lot Frontage: 34
Water Service: Municipal
Sewer Type: Municipal
Legal Description: LOT 1 B2N R4E ORIGINAL PLAT OF ANN ARBOR

Zoning Description This district is intended to be an area of transition between the D1 and surrounding residential neighborhoods. This district is appropriate for medium density residential and mixed-use Development.

Location

Address: 209-211 N Fourth Ave, Ann Arbor, MI 48104
County: Washtenaw
MSA: Ann Arbor
Submarket: Washtenaw W of 23



Property Images



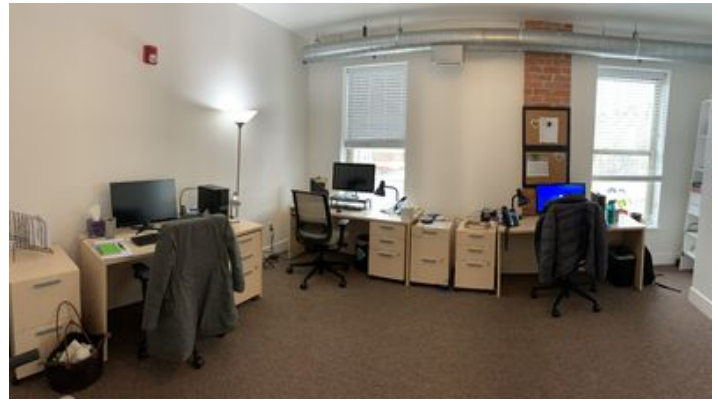
Street view



IMG_8850



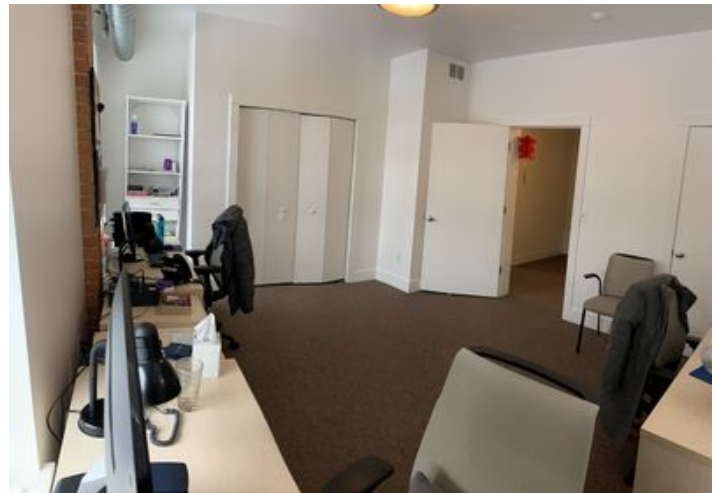
Suite 1



suite 1



Suite 1 kitchen



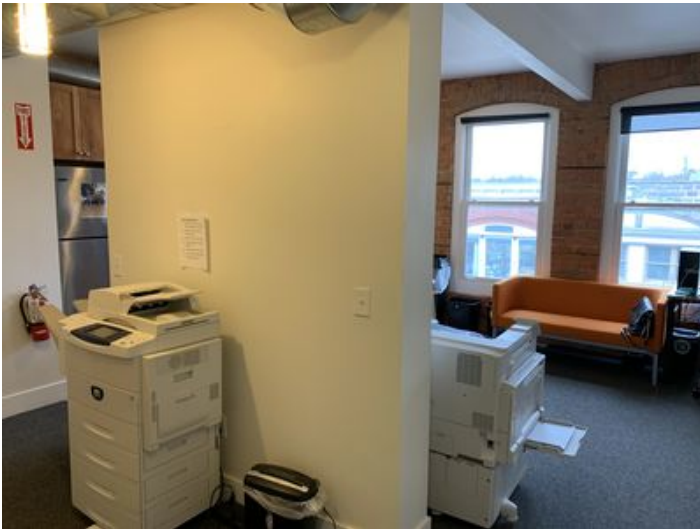
Suite 1



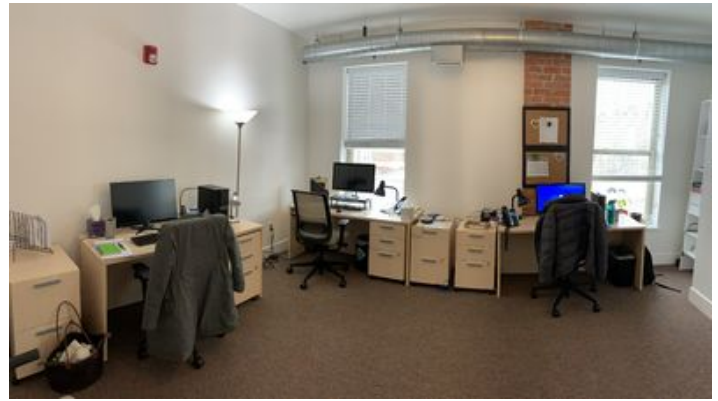
Suite 1



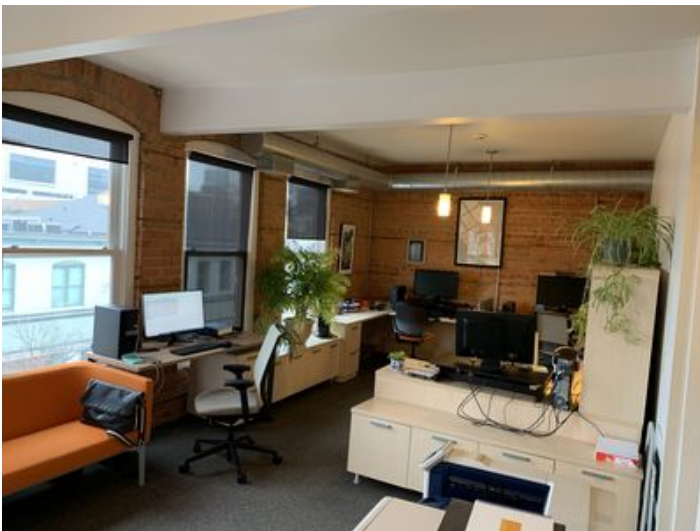
Suite 1 bathroom



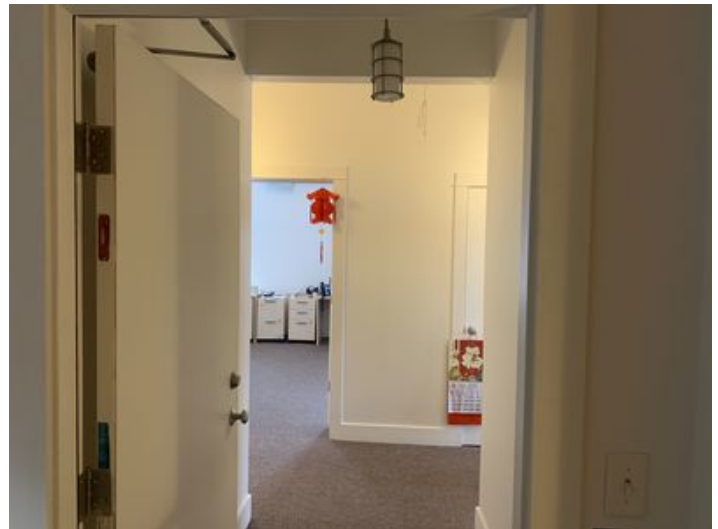
Suite 2



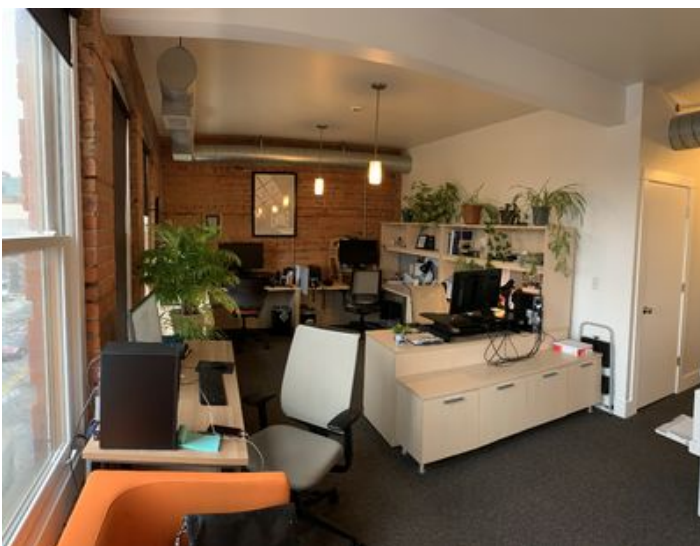
Suite 2



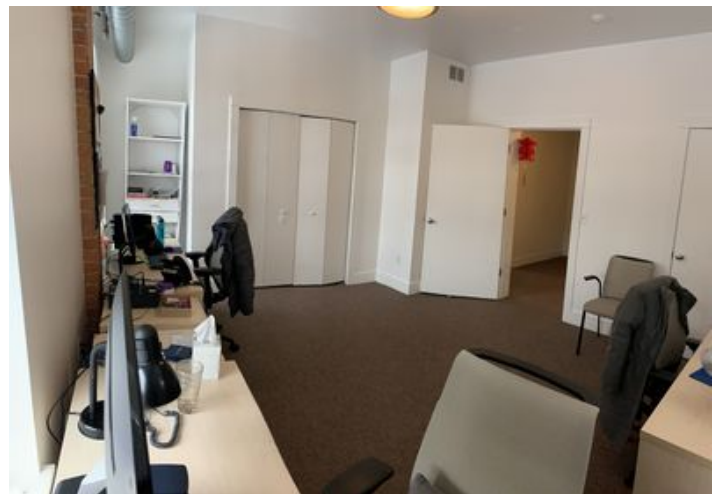
Suite 2



Suite 2



Suite 2



Suite 2



Suite 2

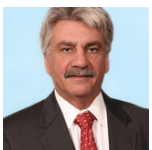


IMG_8846



Suite 2 bathroom

Property Contacts



James H. Chaconas

Colliers International
734-994-3100 [0]
jim.chaconas@colliers.com