

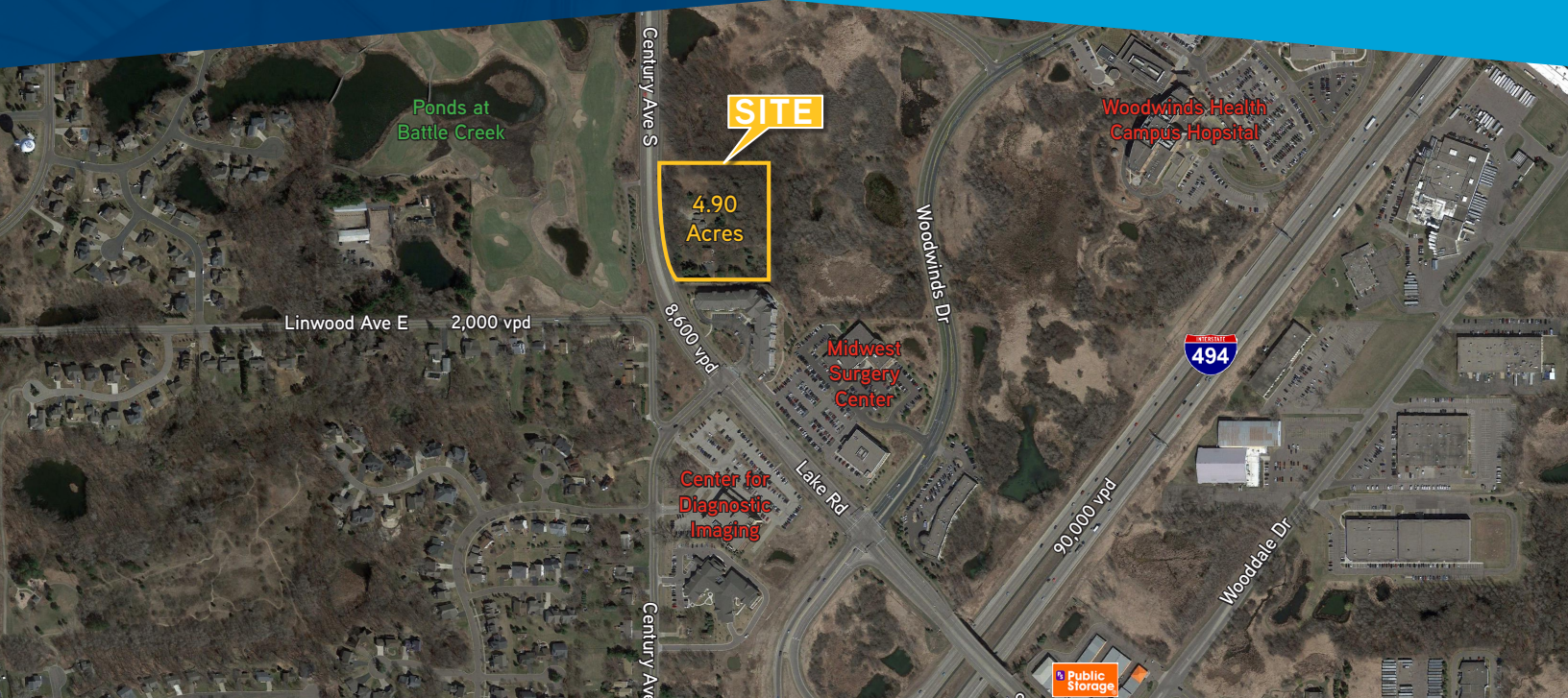
LAND FOR SALE >

Woodbury Land - 4.90 Acres

1905 Century Avenue South | Woodbury, MN 55125



Accelerating success.



NEW TO THE MARKET!

PROPERTY HIGHLIGHTS

- > Approximately 4.90 acres
- > City to allow up to 75 units of senior housing/assisted living
- > Easy access to I-494, I-94, I-694
- > Ideal location for senior housing adjacent to Woodwinds Hospital
- > Outstanding multi-family development opportunity
- > Woodbury recognized as one of the Best Places to Live in 2016 and 2017 (CNN Money Magazine)



CONTACT US >

Andy Heieie
952 897 7816
andy.heieie@colliers.com

WOODBURY LAND - 4.90 ACRES > FOR SALE

SITE INFORMATION:

- > Location: 1905 Century Ave S | Woodbury, MN 55125
- > Description: Approximately 4.90 Acres
- > Zoning: MC-Medical Campus District; Currently being reguided to Places To Live (Residential)

DEMOGRAPHICS: 1 MILE 3 MILES 5 MILES

| | | | |
|-------------------|----------|----------|----------|
| Population | 9,282 | 61,094 | 207,534 |
| Median HH Income | \$76,785 | \$73,747 | \$64,257 |
| Average HH Income | \$98,403 | \$95,058 | \$86,812 |

* Source: ESRI 2015 Est.

TRAFFIC COUNTS:

- > I-494: 90,000 vpd
- > Century Ave S: 8,600 vpd

* Source: Minnesota Department of Transportation 20116 Study averages are per day total cars

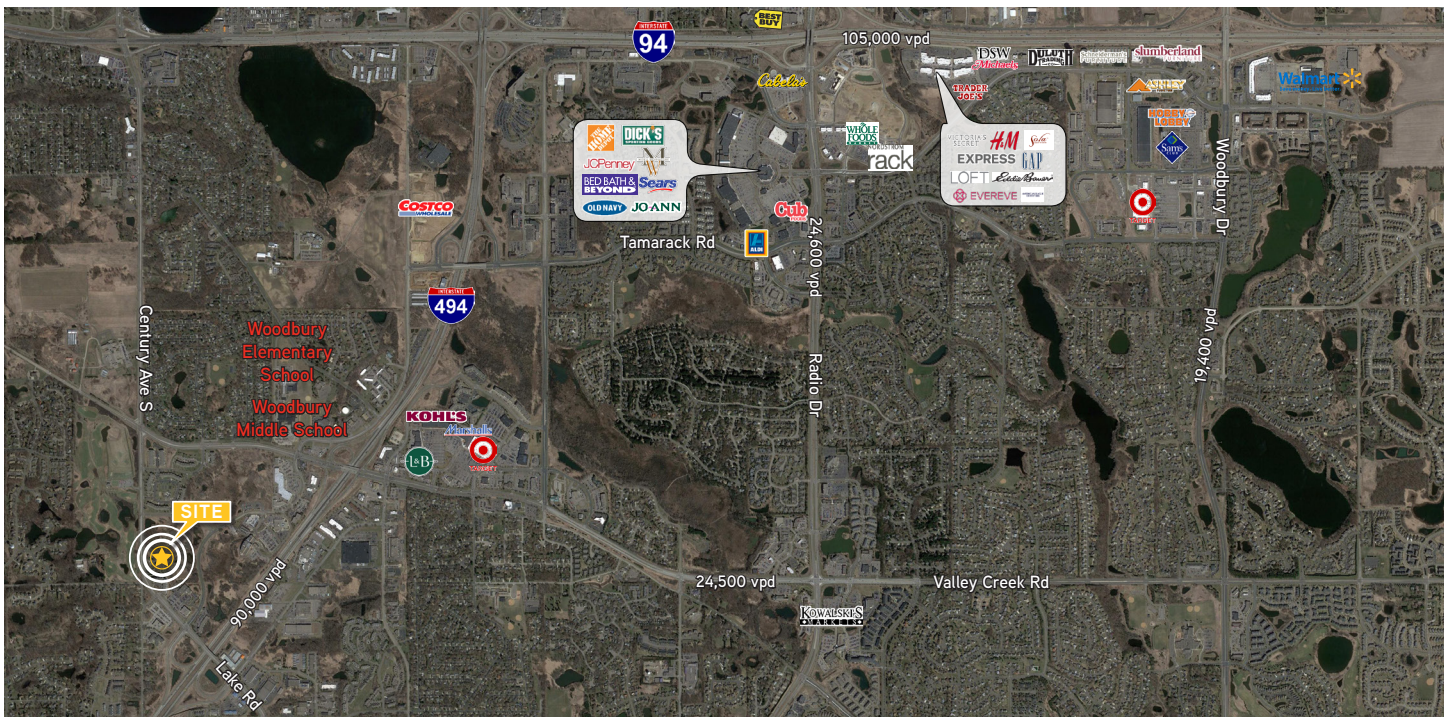
SALE PRICE:

Contact Broker

CONTACT US >

Andy Heieie
952 897 7816
andy.heieie@colliers.com

AERIAL



Accelerating success.