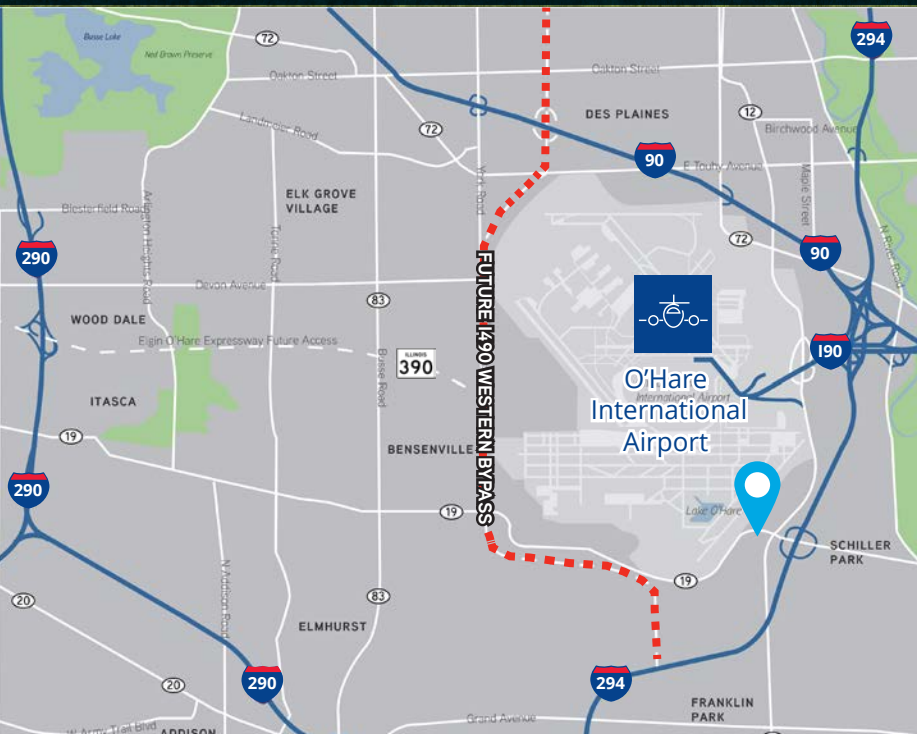




4333 TRANSWORLD RD, SCHILLER PARK, IL

Build to Suit Opportunity For Sale or Lease | Up to 55,300 SF



Highlights

- Available Size: Up to 55,300 SF (divisible)
- Office: 2,765 SF or To Suit
- Ceiling Height: 32' clear
- Loading: 11-13 exterior docks, 1-2 drive-in doors
- Car Parking: 64 spaces
- Adjacent to O'Hare International Airport
- Easy access to I-294, I-290 and I-90
- Sale Price: Subject to Offer
- Lease Rate: Subject to Offer
- Approved Cook County 6B real estate tax incentive

Contact:

Thomas Rodeno

Vice Chair
+1 847 698 8231
tom.rodeno@colliers.com

Matthew Stauber, SIOR

Vice Chair
+1 847 698 8236
matthew.stauber@colliers.com

Patrick Turner

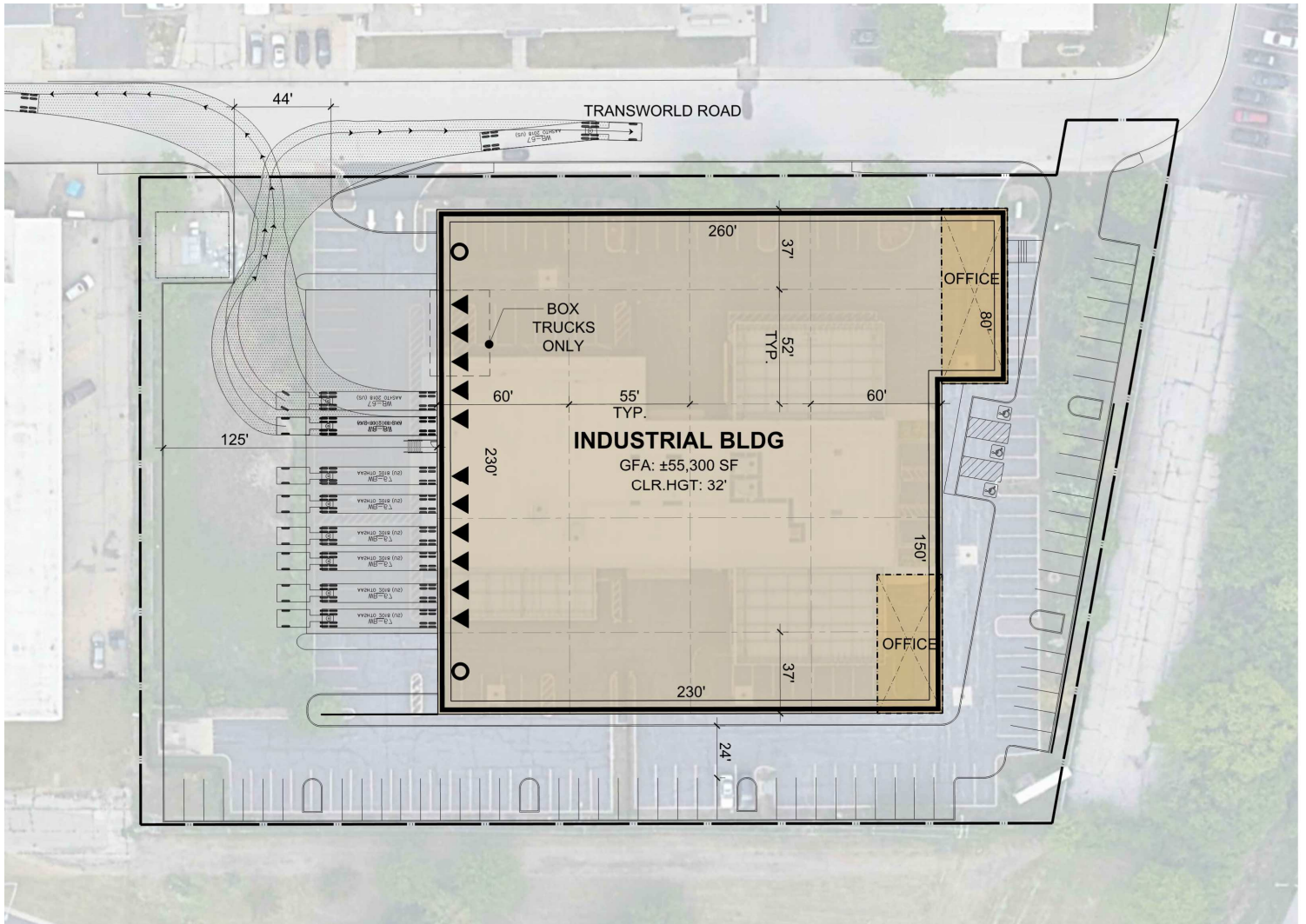
Executive Vice President
+1 847 698 8277
patrick.turner@colliers.com

6250 North River Road
Suite 11-100
Rosemont, IL 60018

55,300 SF Build to Suit For Sale or Lease

4333 Transworld Road, Schiller Park, IL

Potential Site Plan



6250 North River Road
Suite 11-100
Rosemont, IL 60018

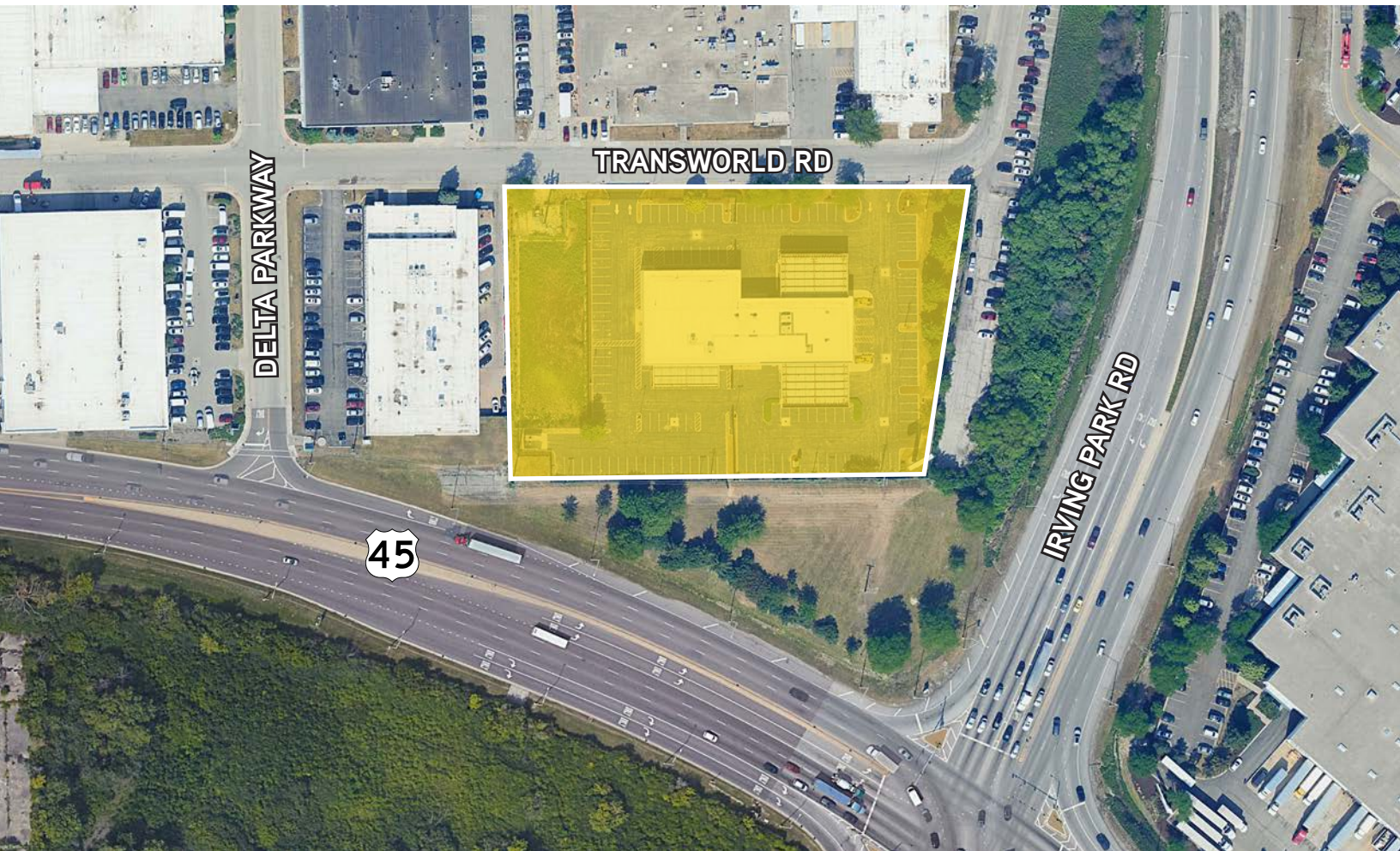
Thomas Rodeno
Vice Chair
+1 847 698 8231
tom.rodno@colliers.com

Matthew Stauber, SIOR
Vice Chair
+1 847 698 8236
matthew.stauber@colliers.com

Patrick Turner
Executive Vice President
+1 847 698 8277
patrick.turner@colliers.com

55,300 SF Build to Suit For Sale or Lease

4333 Transworld Road, Schiller Park, IL



6250 North River Road
Suite 11-100
Rosemont, IL 60018

Thomas Rodeno
Vice Chair
+1 847 698 8231
tom.rodno@colliers.com

Matthew Stauber, SIOR
Vice Chair
+1 847 698 8236
matthew.stauber@colliers.com

Patrick Turner
Executive Vice President
+1 847 698 8277
patrick.turner@colliers.com

55,300 SF Build to Suit For Sale or Lease

4333 Transworld Road, Schiller Park, IL



6250 North River Road
Suite 11-100
Rosemont, IL 60018

Thomas Rodeno
Vice Chair
+1 847 698 8231
tom.rodeno@colliers.com

Matthew Stauber, SIOR
Vice Chair
+1 847 698 8236
matthew.stauber@colliers.com

Patrick Turner
Executive Vice President
+1 847 698 8277
patrick.turner@colliers.com