



For Sublease

**Paul Reese**

Assistant Vice President  
+1 404 859 0660  
paul.reese@colliers.com

---

1230 Peachtree St NE  
Suite 800  
Atlanta, GA 30309  
Main: +1 404 888 9000  
colliers.com

## 999 Peachtree St NE Suite 1120 Atlanta, GA 30309

999 Peachtree is a Class A building located in the heart of Midtown at Peachtree St. and 10th St., adjacent to the Midtown MARTA Station. Amenities include full-service restaurant in the lobby, an outdoor bocce ball court, cafe, and The Peachtree Club on the top floor. Walk score of 95.

**Building Features:**

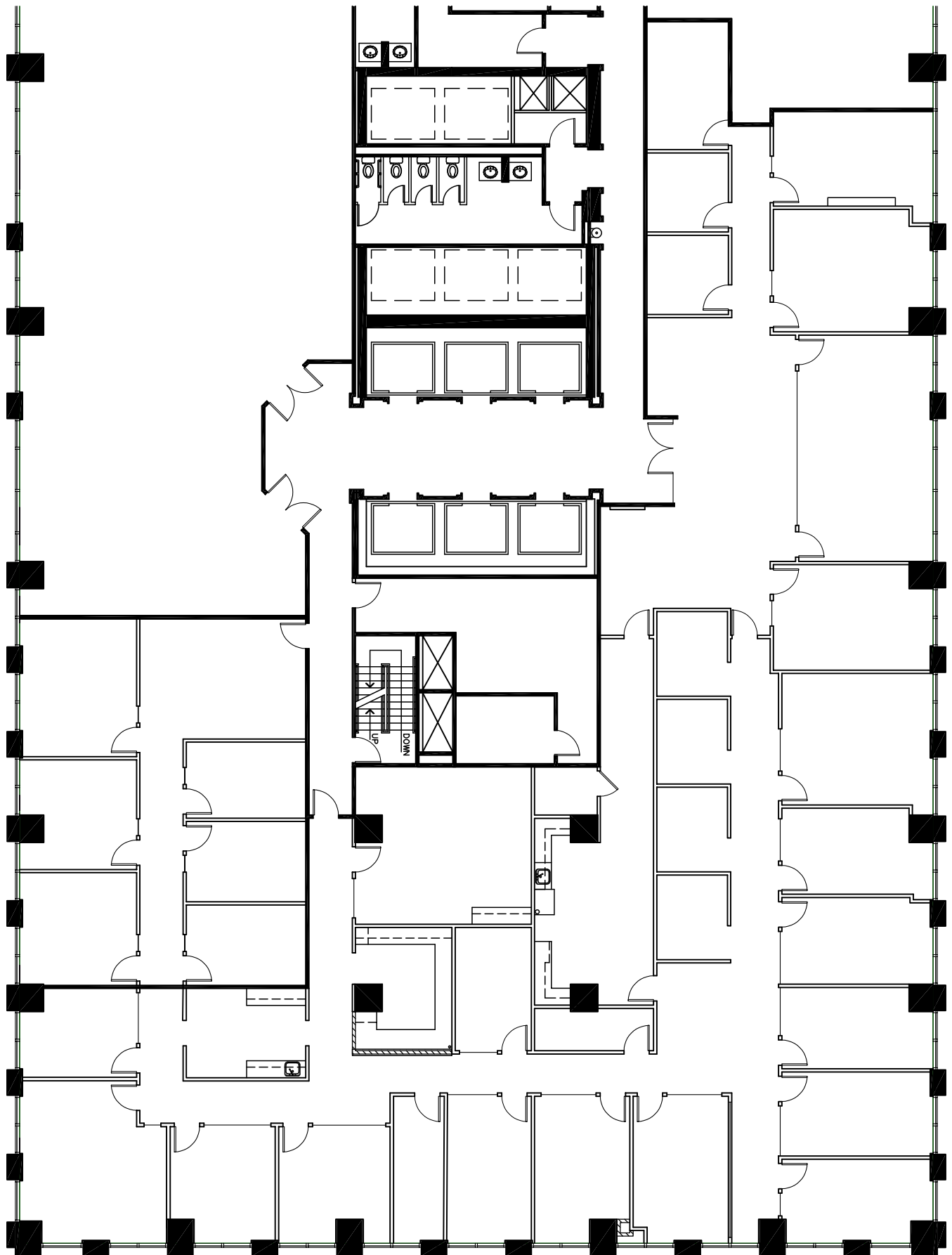
- 9,392-11,126 RSF available for sublease
- Term through April 30, 2025
- \$35.00/SF Full Service
- Furniture is negotiable
- Beautiful views of Midtown and Piedmont Park



# Interior Photos



# Floorplan

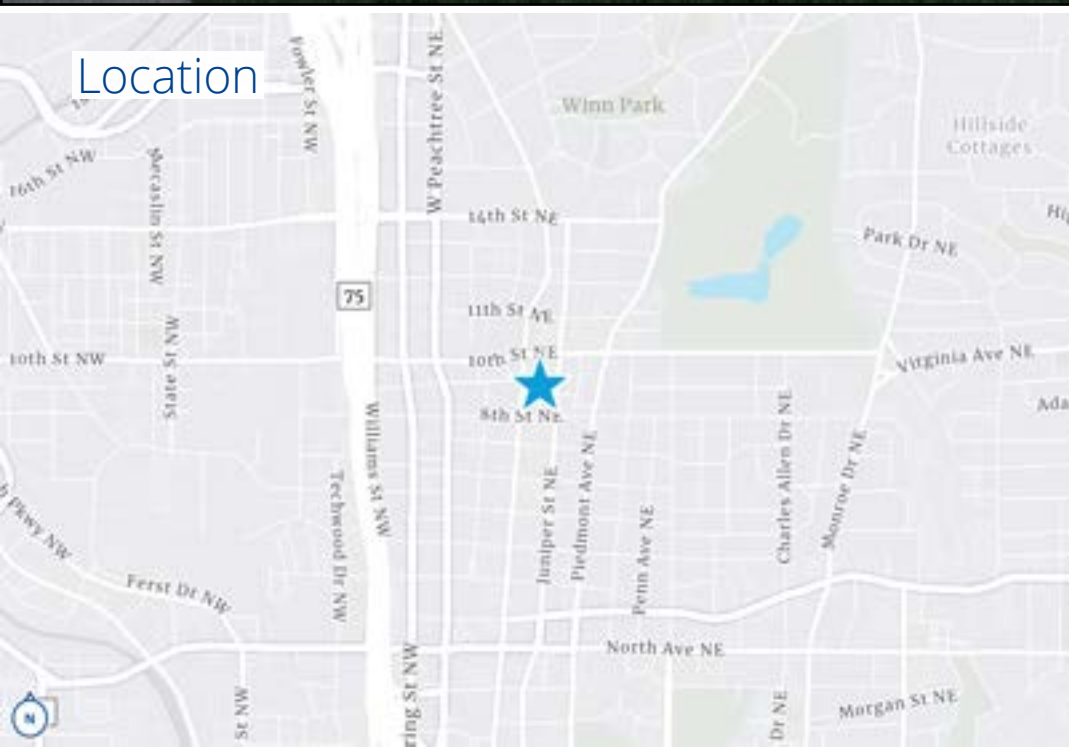


[Click here for an interactive 3D view!](#)





## Location



### **Paul Reese**

Assistant Vice President  
+1 404 859 0660  
[paul.reese@colliers.com](mailto:paul.reese@colliers.com)

---

1230 Peachtree St NE  
Suite 800  
Atlanta, GA 30309  
Main: +1 404 888 9000  
[colliers.com](http://colliers.com)