

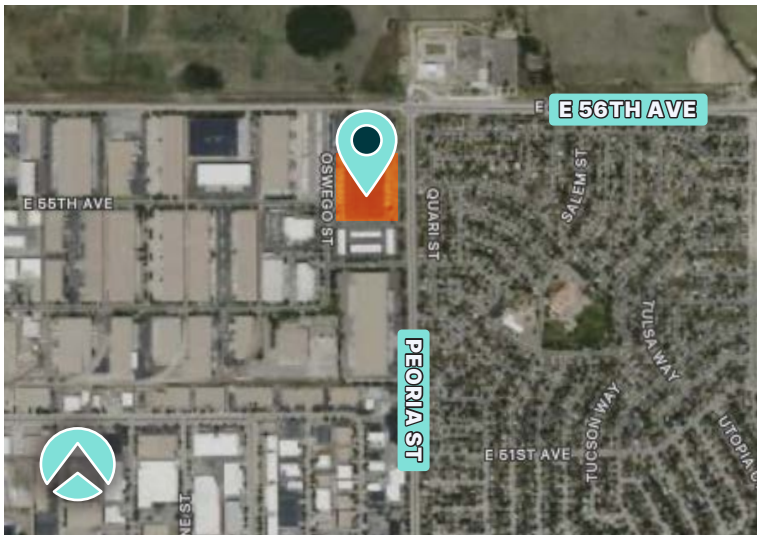
INDUSTRIAL SPACE FOR LEASE

133,524 SF



5501 Peoria St., Suite 200
Denver, CO 80239

Peoria Distribution Center



- Rare cross-dock configuration in this footprint
- Conveniently located near the Airport Central Submarket
- Located within major distribution hubs
- Easy Access to I-70, I-25 and I-225
- Infill property with large fenced yard
- 18 minutes to Denver International Airport and 20 from Downtown Denver

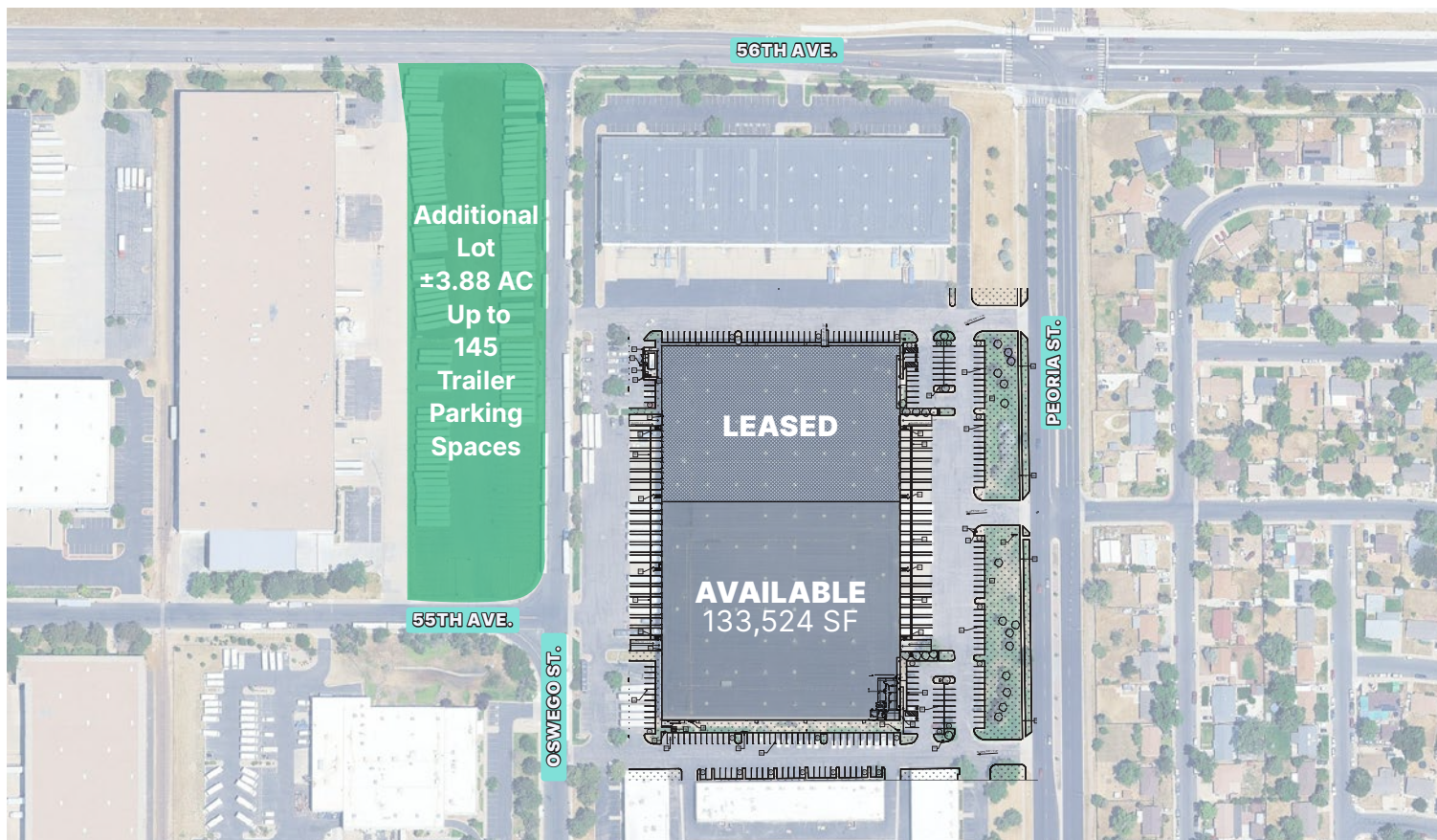
Property Features

Available Space	± 133,524 SF (divisible)
Office Space	± 2,152 SF
Clear Height	29'
Column Spacing	47'x50'
Dock High Doors	24 (17 Pit levelers, 6 EOD levelers)
Drive-in Doors	2 (14'x16')
Trailer Parking Spaces	Up to 145
Car Parking Spaces	± 127
Electrical Service	600A (TBV)
Sprinkler System	ESFR
Lighting	LED Motion Sensor
Base Rate	Contact Brokers

INDUSTRIAL SPACE FOR LEASE

133,524 SF

5501 Peoria St., Suite 200
Denver, CO 80239



4643 S. Ulster Street
Suite 1000
Denver, CO 80237
303 745 5800
colliers.com/denver

Cody Sheesley, *Principal*
+1 303 309 3520
cody.sheesley@colliers.com

T.J. Smith, *SIOR, Principal*
+1 303 283 4576
tj.smith@colliers.com

Tyler Ryon, *Principal*
+1 720 833 4612
tyler.ryon@colliers.com

Nick Rice, *SIOR, Principal*
+1 720 833 4620
nick.rice@colliers.com

Tressa Shiplett
+1 303 567 5308
tshiplett2@prologis.com