

FOR LEASE > OFFICE/FLEX SPACE



Lenexa Place

SUITE 14803, 95TH STREET & LACKMAN ROAD, LENEXA, KS



Property Features

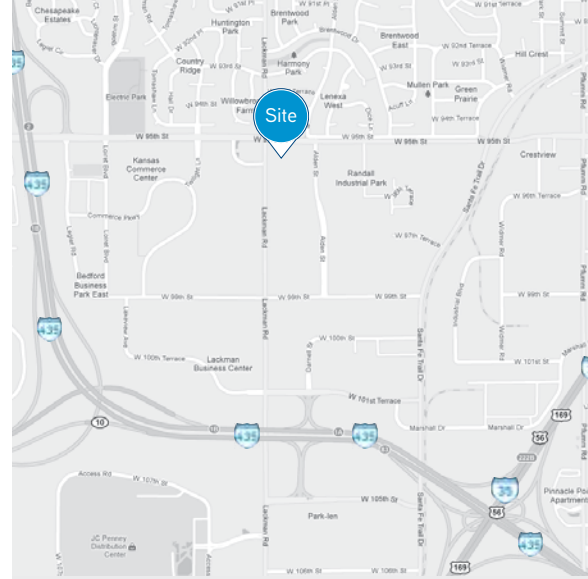
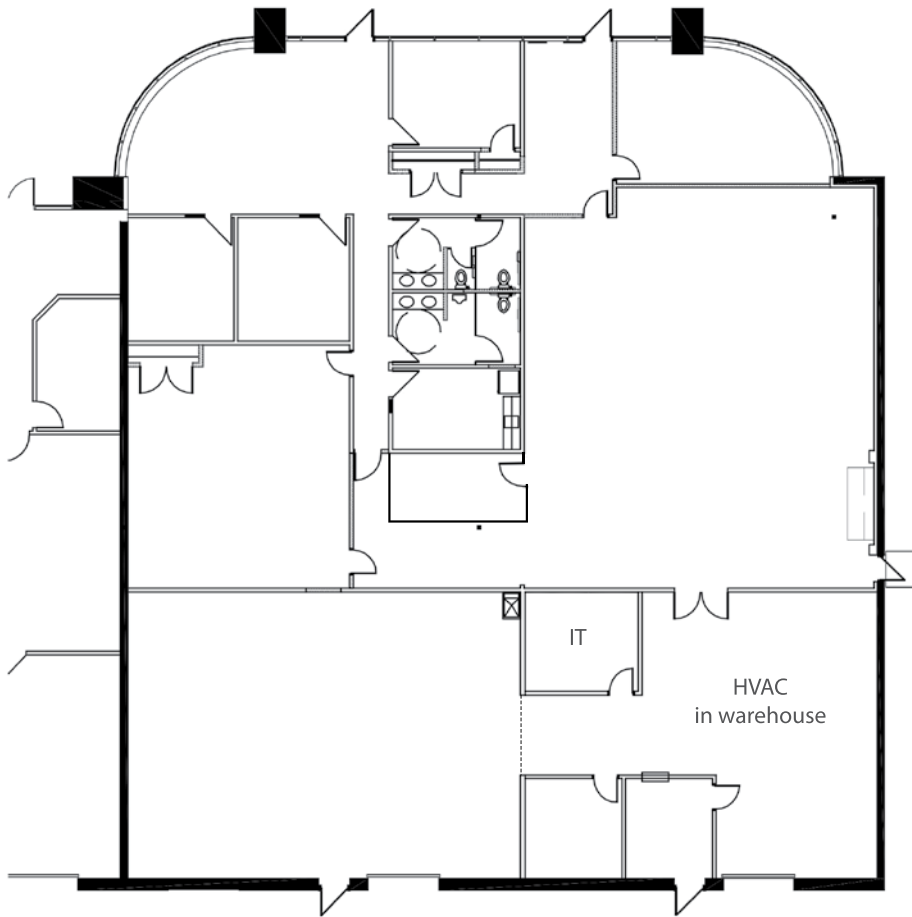
- > Suite 14803: 7,831 SF available (5,094 SF office)
- > Single-story office/flex building located at 95th Street & Lackman Road in Lenexa, Kansas
- > Conveniently located near restaurants and retail amenities
- > 14' clear height
- > 2 drive-in loading doors
- > Exceptional parking at a ratio of approximately 3.5/1,000
- > Lease rate: \$11.50 PSF, gross industrial

TOM HAVERTY
+1 816 556 1105
KANSAS CITY, MO
tom.haverty@colliers.com

COLLIERS INTERNATIONAL
4520 Main Street, Suite 1000
Kansas City, MO 64111
www.colliers.com

Suite 14803 › Floor Plan

7,831 S.F.



Contact

TOM HAVERTY
+1 816 556 1105
KANSAS CITY, MO
tom.haverty@colliers.com

COLLIERS INTERNATIONAL
4520 Main Street, Suite 1000
Kansas City, MO 64111

www.colliers.com

This document has been prepared by Colliers International for advertising and general information only. Colliers International makes no guarantees, representations or warranties of any kind, expressed or implied, regarding the information including, but not limited to, warranties of content, accuracy and reliability. Any interested party should undertake their own inquiries as to the accuracy of the information. Colliers International excludes unequivocally all inferred or implied terms, conditions and warranties arising out of this document and excludes all liability for loss and damages arising there from. This publication is the copyrighted property of Colliers International and/or its licensor(s). © 2018. All rights reserved.

