



Accelerating success.



**FOR LEASE**

Asking Price:

**\$18.25**

PSF, Full Service

**Contact us:**

**Greg Joslin, CCIM, SIOR**

+1 501 978 6581

greg.joslin@ar.colliers.com

1 Allied Drive, Suite 1500,  
Little Rock, AR 72202  
P: +1 501 372 6161  
colliers.com/arkansas

## 10 Corporate Hill Drive, Little Rock, AR

### For Lease: Arkansas Medical Society Building

#### Features

- Available: 509 RSF - 1,235 RSF
- Lease rate: \$18.25/SF, Full Service
- Tenant improvement allowance negotiable
- Easy access to I-630 and I-430
- Ground level entrances at the front and rear of building
- 106 free parking spaces

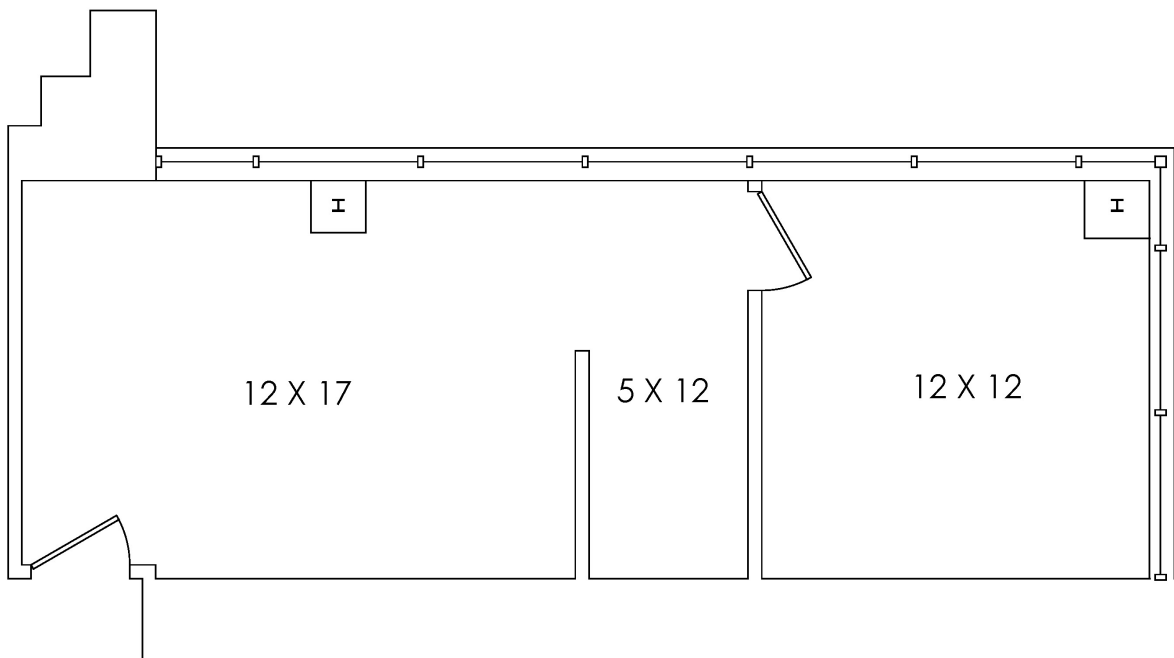
Copyright © 2025 Colliers International.

Information herein has been obtained from sources deemed reliable, however its accuracy cannot be guaranteed. The user is required to conduct their own due diligence and verification.

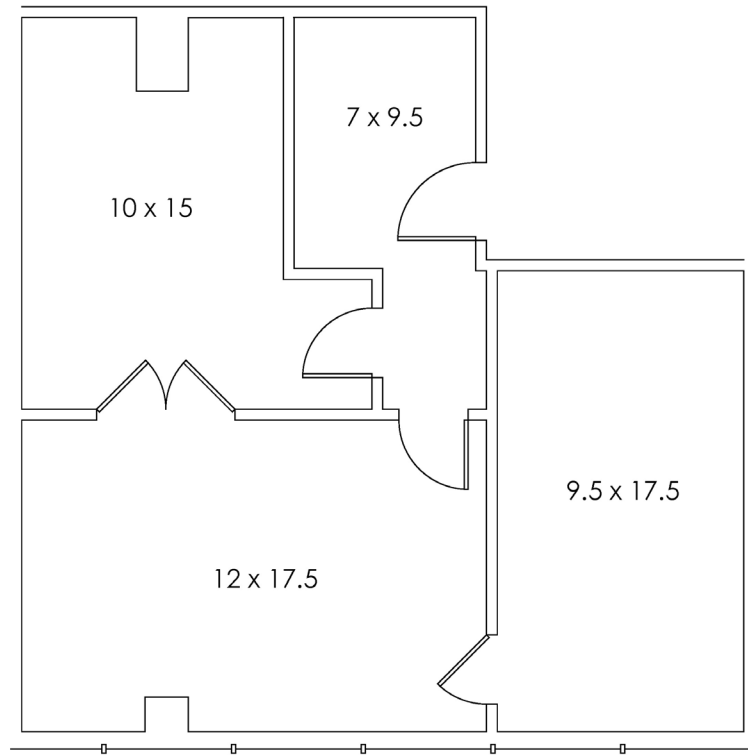
# Neighborhood Map



## Floor Plan | Suite 120 (509 RSF)



## Floor Plan | Suite 220 (797 RSF)



## Floor Plan | Suite 225 (1,235 RSF)

