



# For Lease

## Arkansas Medical Society Building

10 Corporate Hill Drive,  
Little Rock, AR 72205

GREG JOSLIN, CCIM, SIOR  
501 978 6581  
[greg.joslin@colliers.com](mailto:greg.joslin@colliers.com)



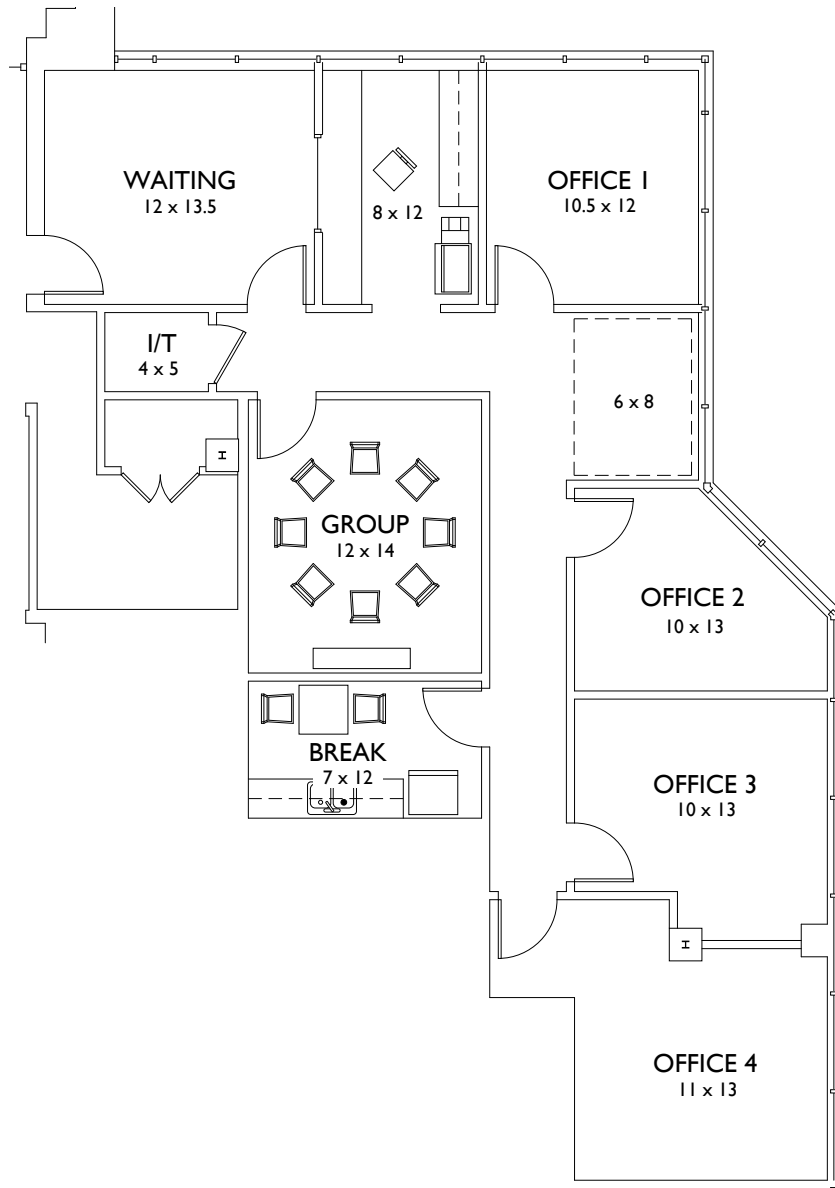
COLLIERS INTERNATIONAL  
1 Allied Dr, Suite 1500  
Little Rock, AR 72202  
501 372 6161  
[www.colliers.com/arkansas](http://www.colliers.com/arkansas)

### KEY FEATURES/HIGHLIGHTS

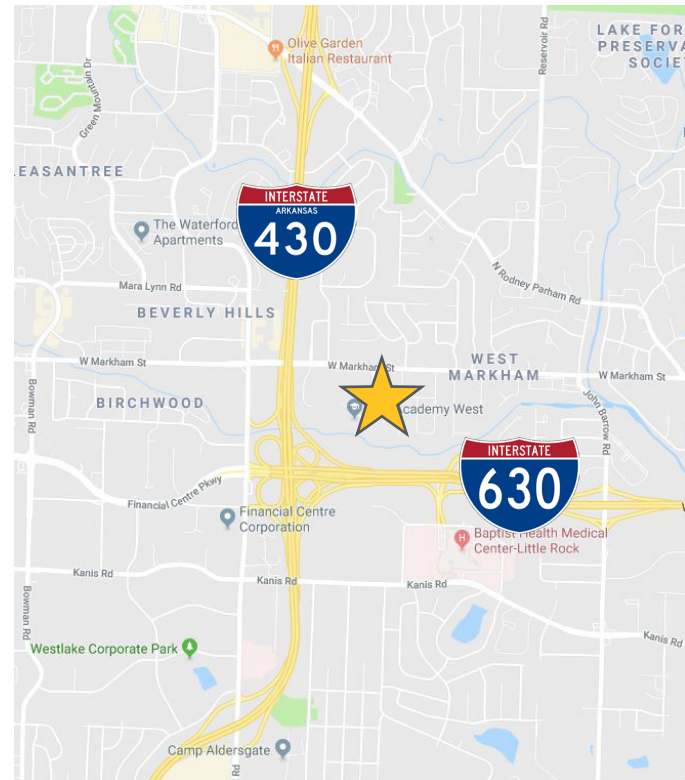
- › Suite 210: approx. 1,671 SF
- › Lease rate: \$16.50/SF, Full Service
- › Tenant improvement allowance: negotiable
- › Ideal west Little Rock location
- › Easily accessible to I-630 and I-430
- › Ground level entrances at the front and rear of building
- › 106 free parking spaces

# FOR LEASE > Office space

## SUITE 210 FIT PLAN



This document has been prepared by Colliers International for advertising and general information only. Colliers International makes no guarantees, representations or warranties of any kind, expressed or implied, regarding the information including, but not limited to, warranties of content, accuracy and reliability. Any interested party should undertake their own inquiries as to the accuracy of the information. Colliers International excludes unequivocally all inferred or implied terms, conditions and warranties arising out of this document and excludes all liability for loss and damages arising there from. This publication is the copyrighted property of Colliers International and/or its licensor(s). ©2016. All rights reserved.



## CONTACT US

GREG JOSLIN, CCIM, SIOR  
501 978 6581  
[greg.joslin@colliers.com](mailto:greg.joslin@colliers.com)



**COLLIERS INTERNATIONAL**  
1 Allied Dr, Suite 1500  
Little Rock, AR 72202  
+1 501 372 6161  
[www.colliers.com/arkansas](http://www.colliers.com/arkansas)

