

FOR LEASE > RETAIL

# GATEWAY CENTER

103 – 125 SOUTH MAIN STREET | ROCHESTER, MICHIGAN



**SOUTH MAIN STREET TRAFFIC COUNTS - 37,000**

## > PROPERTY HIGHLIGHTS

- 1,620 Square Feet Available
- Great Visibility and Parking
- **Join:** Super Kicks Karate, McCauley Chiropractic, Georgio's Pizza, Whoo U R, Kumon-Math & Learning & Detroit Deli & More

DEMOGRAPHICS	Category	1 Mile	3 Mile	5 Mile
	Population	11,553	66,909	151,507
	Average Income	\$87,380	\$101,220	\$102,583
	Households	5,448	27,591	60,808

**COLLIERS INTERNATIONAL**  
2 Corporate Drive | Suite 300  
Southfield, Michigan 48076

**For More Information Call:**

**BRIAN WHITFIELD**

PHONE 248 540 1000 EXT 1646

EMAIL [brian.whitfield@colliers.com](mailto:brian.whitfield@colliers.com)



[colliers.com/detroit](http://colliers.com/detroit)



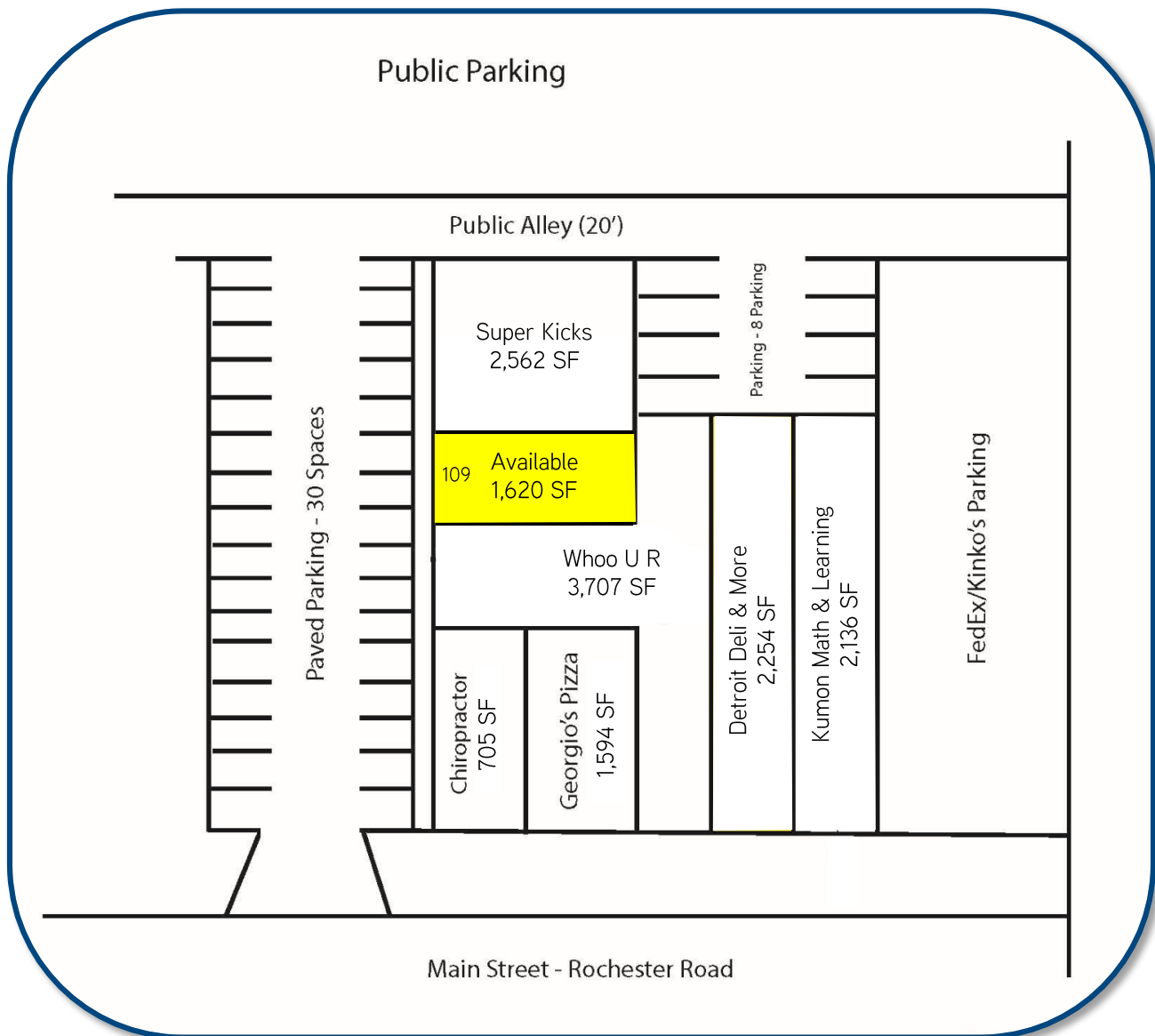
FOR LEASE > RETAIL

# GATEWAY CENTER

103 – 125 SOUTH MAIN STREET | ROCHESTER, MICHIGAN



## > SITE PLAN



**BRIAN WHITFIELD**

PHONE 248 540 1000 EXT 1646

EMAIL [brian.whitfield@colliers.com](mailto:brian.whitfield@colliers.com)



**COLLIERS INTERNATIONAL**

2 Corporate Dr. | Suite 300  
Southfield, Michigan 48076

FOR LEASE > RETAIL

# GATEWAY CENTER

103 – 125 SOUTH MAIN STREET | ROCHESTER, MICHIGAN



## > AERIAL MAP



**BRIAN WHITFIELD**

PHONE 248 540 1000 EXT 1646

EMAIL [brian.whitfield@colliers.com](mailto:brian.whitfield@colliers.com)



**COLLIERS INTERNATIONAL**

2 Corporate Dr. | Suite 300  
Southfield, Michigan 48076



FOR LEASE > RETAIL

# GATEWAY CENTER

103 – 125 SOUTH MAIN STREET | ROCHESTER, MICHIGAN



## > PROPERTY PHOTOS



**BRIAN WHITFIELD**

PHONE 248 540 1000 EXT 1646

EMAIL [brian.whitfield@colliers.com](mailto:brian.whitfield@colliers.com)



**COLLIERS INTERNATIONAL**

2 Corporate Dr. | Suite 300

Southfield, Michigan 48076

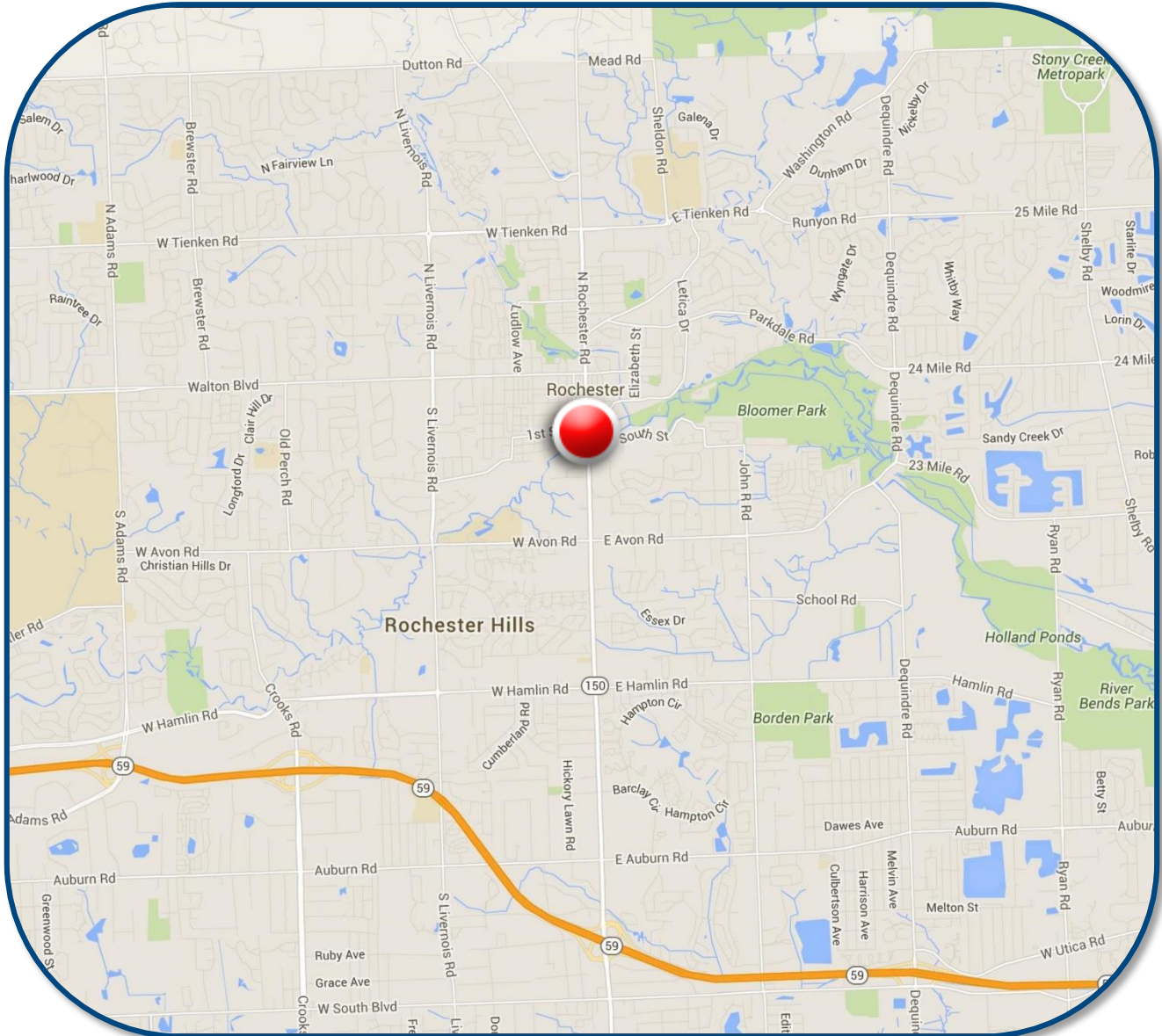
FOR LEASE > RETAIL

# GATEWAY CENTER

103 – 125 SOUTH MAIN STREET | ROCHESTER, MICHIGAN



## > LOCATION MAP



**BRIAN WHITFIELD**

PHONE 248 540 1000 EXT 1646

EMAIL [brian.whitfield@colliers.com](mailto:brian.whitfield@colliers.com)



**COLLIERS INTERNATIONAL**

2 Corporate Dr. | Suite 300  
Southfield, Michigan 48076



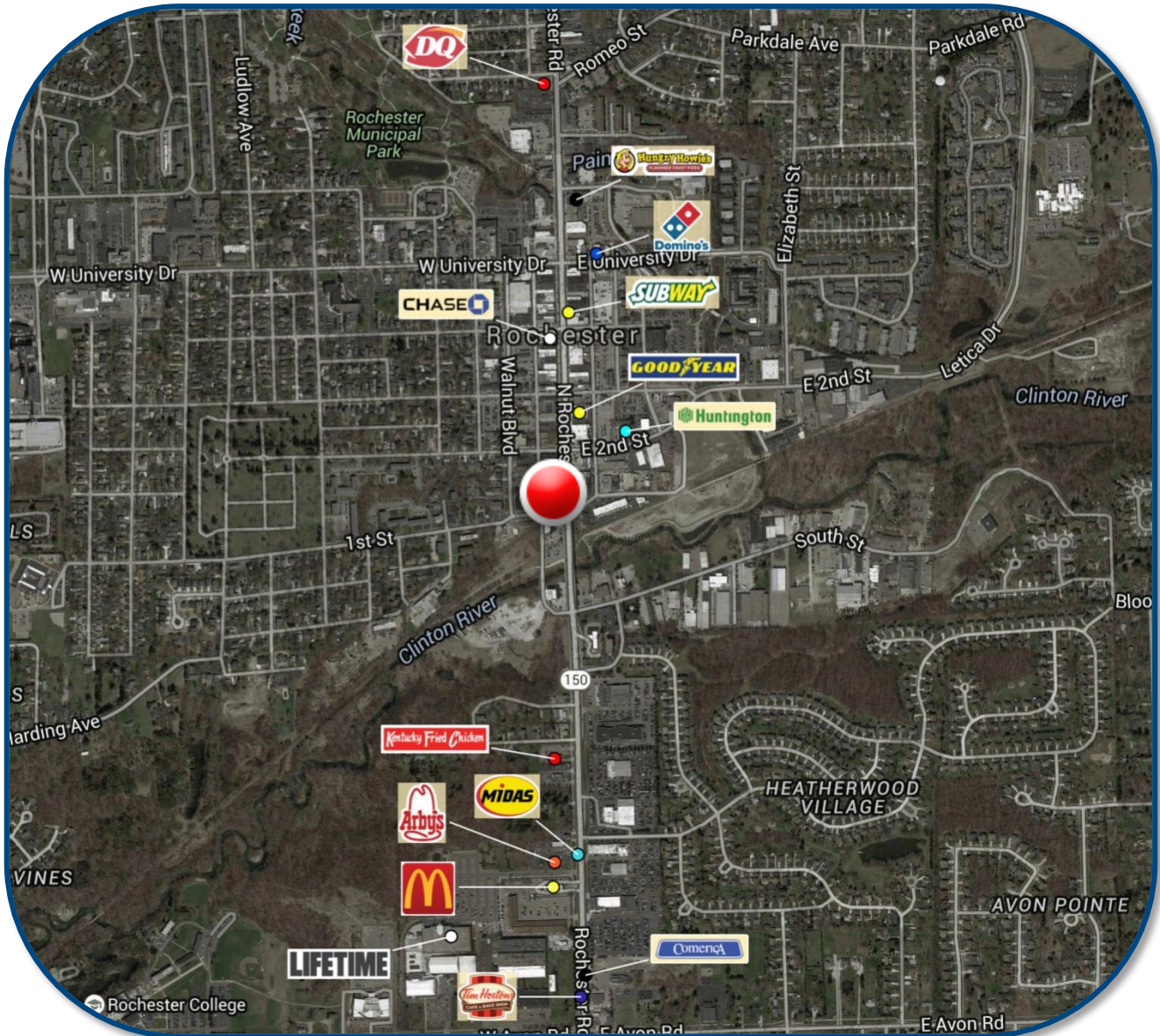
FOR LEASE > RETAIL

# GATEWAY CENTER

103 – 125 SOUTH MAIN STREET | ROCHESTER, MICHIGAN



## > AREA MERCHANT MAP



**BRIAN WHITFIELD**

PHONE 248 540 1000 EXT 1646

EMAIL [brian.whitfield@colliers.com](mailto:brian.whitfield@colliers.com)



**COLLIERS INTERNATIONAL**

2 Corporate Dr. | Suite 300

Southfield, Michigan 48076

# SUMMARY PROFILE

2000-2010 Census, 2016 Estimates with 2021 Projections

Calculated using Weighted Block Centroid from Block Groups



Lat/Lon: 42.6774/-83.1340

RS1

103-125 S Main St Rochester, MI 48307		1 mi radius	3 mi radius	5 mi radius
POPULATION	2016 Estimated Population	11,553	66,909	151,507
	2021 Projected Population	11,734	68,278	154,219
	2010 Census Population	11,148	65,378	147,623
	2000 Census Population	10,506	61,625	135,019
	Projected Annual Growth 2016 to 2021	0.3%	0.4%	0.4%
	Historical Annual Growth 2000 to 2016	0.6%	0.5%	0.8%
	2016 Median Age	36.9	41.2	40.6
HOUSEHOLDS	2016 Estimated Households	5,448	27,591	60,808
	2021 Projected Households	5,645	28,773	63,296
	2010 Census Households	5,093	26,178	57,411
	2000 Census Households	4,807	24,475	51,160
	Projected Annual Growth 2016 to 2021	0.7%	0.9%	0.8%
	Historical Annual Growth 2000 to 2016	0.8%	0.8%	1.2%
RACE AND ETHNICITY	2016 Estimated White	82.9%	82.2%	81.6%
	2016 Estimated Black or African American	5.9%	4.9%	5.6%
	2016 Estimated Asian or Pacific Islander	8.4%	10.0%	9.8%
	2016 Estimated American Indian or Native Alaskan	0.2%	0.2%	0.2%
	2016 Estimated Other Races	2.7%	2.7%	2.7%
	2016 Estimated Hispanic	3.7%	3.4%	3.2%
INCOME	2016 Estimated Average Household Income	\$87,380	\$101,220	\$102,583
	2016 Estimated Median Household Income	\$72,024	\$87,874	\$87,535
	2016 Estimated Per Capita Income	\$41,273	\$41,797	\$41,325
EDUCATION (AGE 25+)	2016 Estimated Elementary (Grade Level 0 to 8)	1.0%	1.5%	1.8%
	2016 Estimated Some High School (Grade Level 9 to 11)	2.5%	2.4%	3.1%
	2016 Estimated High School Graduate	13.1%	15.4%	17.6%
	2016 Estimated Some College	21.8%	18.8%	19.0%
	2016 Estimated Associates Degree Only	9.3%	9.1%	9.1%
	2016 Estimated Bachelors Degree Only	28.7%	29.6%	27.3%
	2016 Estimated Graduate Degree	23.6%	23.2%	22.1%
BUSINESS	2016 Estimated Total Businesses	1,234	3,202	6,203
	2016 Estimated Total Employees	9,674	31,051	88,577
	2016 Estimated Employee Population per Business	7.8	9.7	14.3
	2016 Estimated Residential Population per Business	9.4	20.9	24.4

This report was produced using data from private and government sources deemed to be reliable. The information herein is provided without representation or warranty.