

FOR SALE

# One Acre Pad Site



2752 MACARTHUR ROAD, WHITEHALL, PENNSYLVANIA



## Property Features

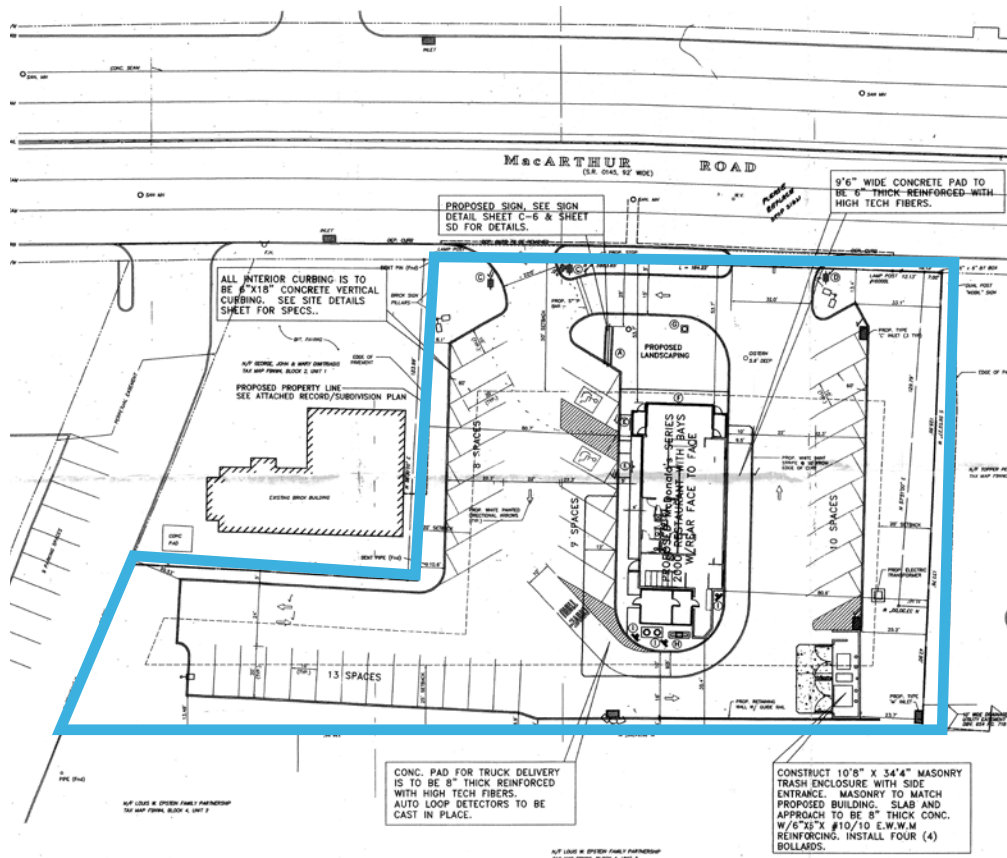
- > 2,771 SF former McDonald's (soon to be vacated)
- > Zoned C-2
- > Centrally located along the Lehigh Valley's premier retail corridor
- > Rare opportunity to purchase a one acre site along MacArthur Road
- > Easy access to MacArthur Road and Route 22

Demographics	1 Mile	3 Mile	5 Mile
Population	6,898	86,250	203,903
Households	2,741	32,566	76,882
Average HH Income	\$86,937	\$61,319	\$64,953

## Contact

DEREK ZERFASS  
SENIOR VICE PRESIDENT  
+1 610 295 6125  
[derek.zerfass@colliers.com](mailto:derek.zerfass@colliers.com)

COLLIERS INTERNATIONAL  
One Windsor  
7535 Windsor Drive, Suite 208  
Allentown, PA 18195  
+1 610 770 3600  
[www.colliers.com/philadelphia](http://www.colliers.com/philadelphia)



## Contact

DEREK ZERFASS  
SENIOR VICE PRESIDENT  
+1 610 295 6125  
[derek.zerfass@colliers.com](mailto:derek.zerfass@colliers.com)



COLLIERS INTERNATIONAL  
One Windsor  
7535 Windsor Drive, Suite 208  
Allentown, PA 18195  
+1 610 770 3600  
[www.colliers.com/philadelphia](http://www.colliers.com/philadelphia)



@ColliersPhilly



Colliers Philly



[colliers.com/philadelphia](http://colliers.com/philadelphia)

The foregoing information was furnished to us by sources which we deem to be reliable, but no warranty or representation is made as to the accuracy thereof. Subject to correction of errors, omissions, change of price, prior sale or withdrawal from market without notice. The aerial image is intended to provide a general outline of the subject property. It is not a survey nor should it be relied upon for purposes of determining property lines or boundaries.