

FOR LEASE > INDUSTRIAL



HIGHLAND PARK

7809 W MORRIS STREET, INDIANAPOLIS, IN



Property Highlights

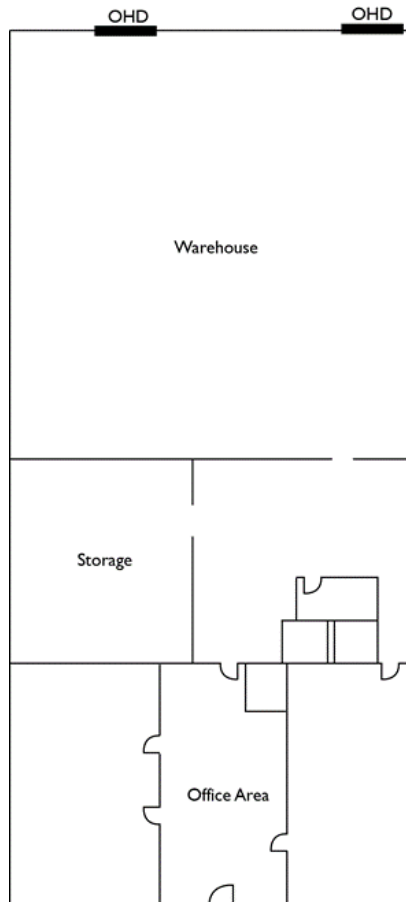
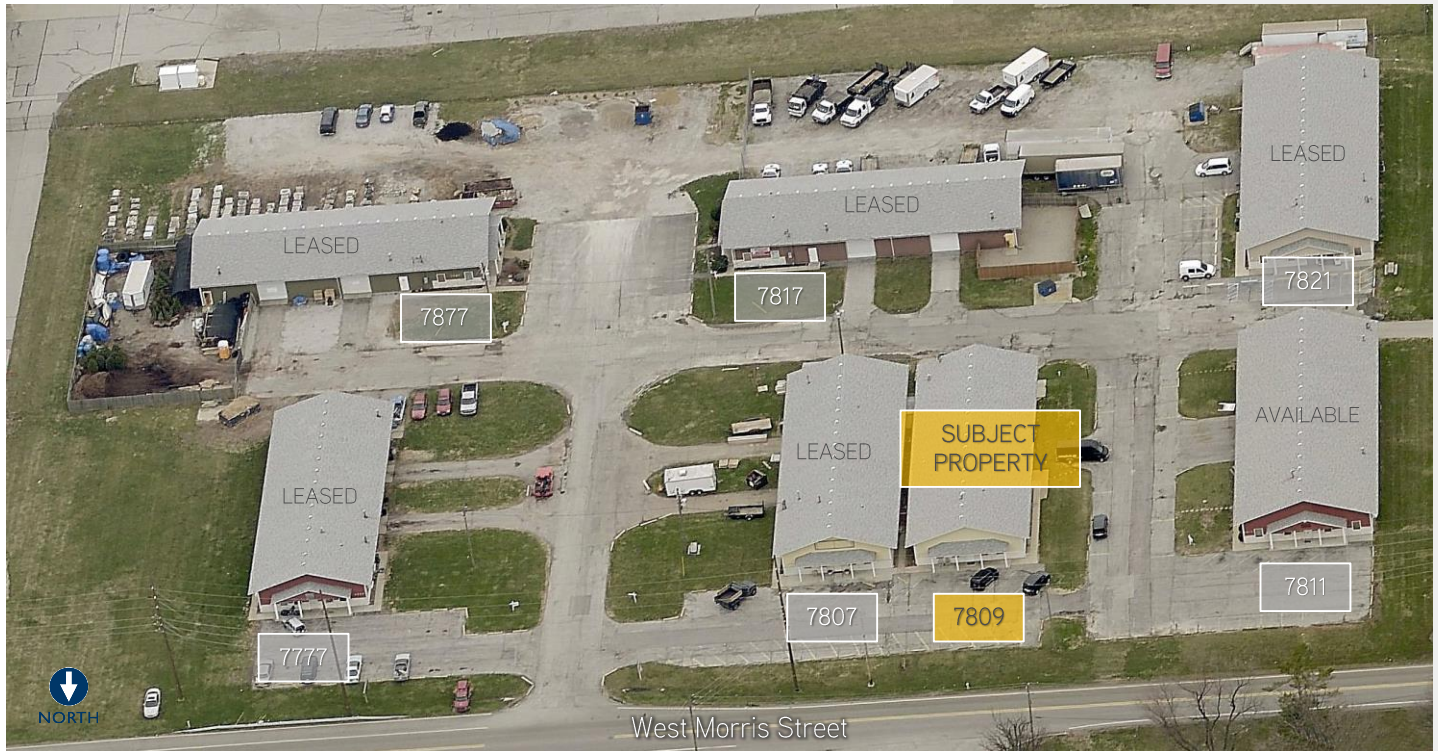
- > 5,300 SF freestanding building for lease
- > 2,500 SF office
- > 2 10' x 10' drive-in doors
- > 12' clear height
- > Zoned I-4-S
- > Close to Indianapolis International Airport & many area amenities
- > Potential for outside storage
- > Available frontage on West Morris Street
- > 2.5 miles / less than 5 minutes from I-465



RYAN KELLY
317 713 2118
ryan.kelly@colliers.com

COLLIERS INTERNATIONAL
241 N Pennsylvania St, Suite 300
Indianapolis, IN 46204
colliers.com

Aerial & Floor Plan



* Drawing is not to scale

Contact

RYAN KELLY
317 713 2118
ryan.kelly@colliers.com

