

› MEDICAL OFFICE SPACE FOR LEASE

LA PAZ MEDICAL & DENTAL PLAZA

26302 La Paz Rd • Mission Viejo



FOR MORE DETAILS, CONTACT:

AARON PHILLIPS

License No. 01769480

949 724 5562

aaron.phillips@colliers.com

JOHN WADSWORTH

License No. 01177404

949 724 5528

john.wadsworth@colliers.com

Colliers
INTERNATIONAL

26302 La Paz Rd • Mission Viejo

BUILDING FEATURES

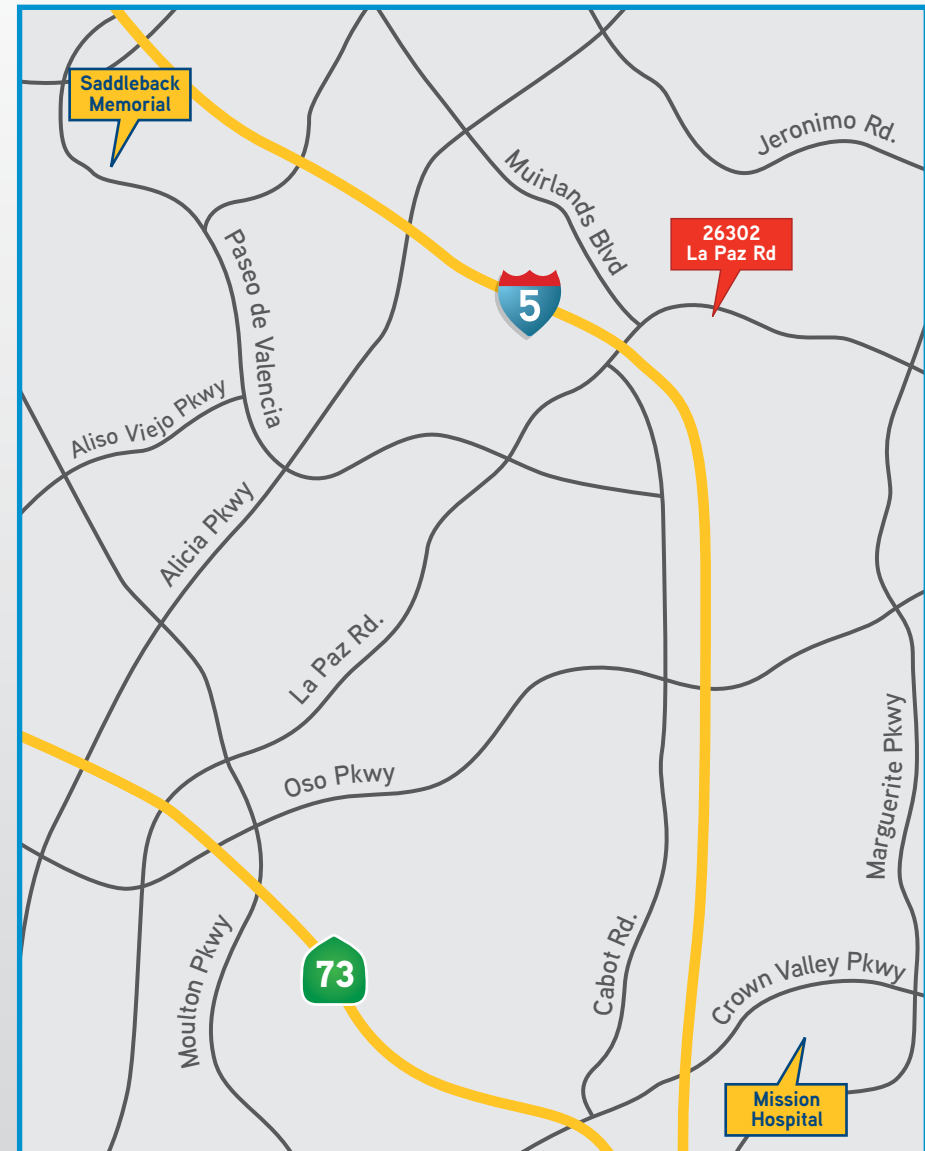
- 40,000 SF, two-story medical office building
- Located between Mission Hospital and Saddleback Memorial Medical Center
- Medical space available from 902-1380 SF
- Free surface parking, conveniently located
- Balanced mix of healthcare specialties, “built-in” referral source
- Professionally managed



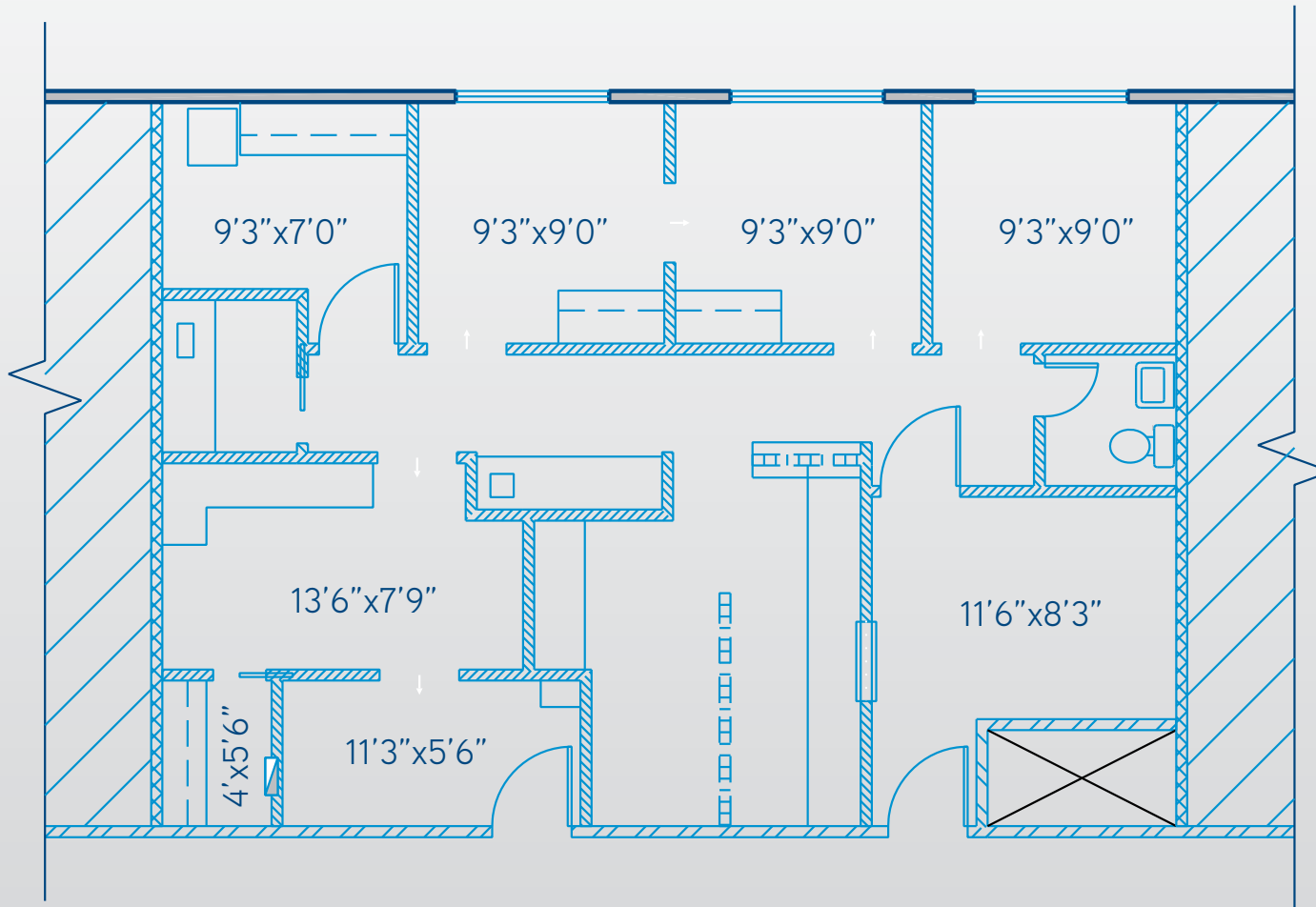
DEMOGRAPHICS

	1 mile	3 miles	5 miles
2013 Population	16,978	157,233	344,835
Est. 2018 Population	17,501	164,164	364,209
% of Population +55	30.89%	30.51%	26.70%
2013 Est. Average Age	41.60	41.20	39.40
Avg. HH Income	\$125,690	\$103,817	\$111,929

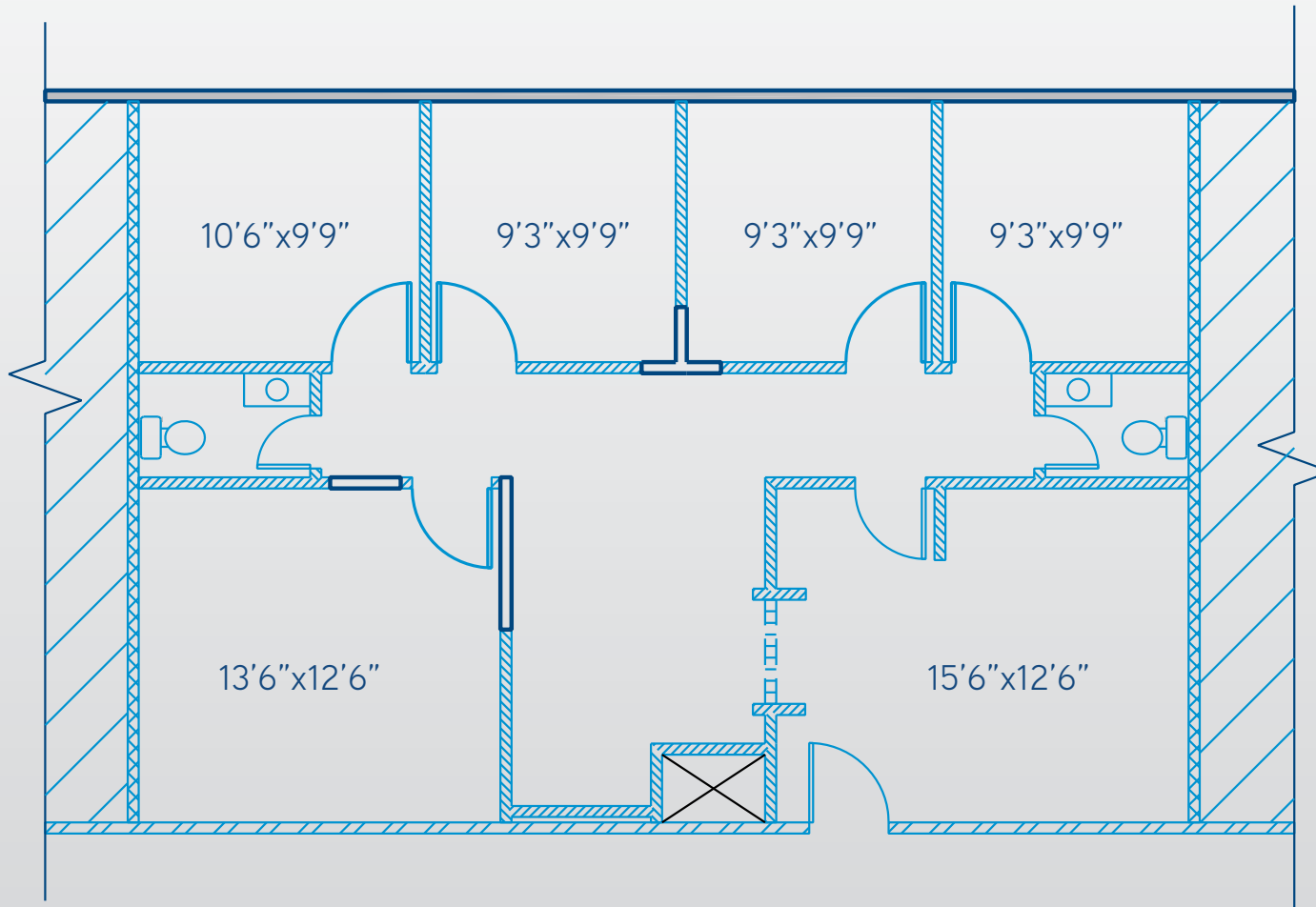
26302 La Paz Rd • Mission Viejo



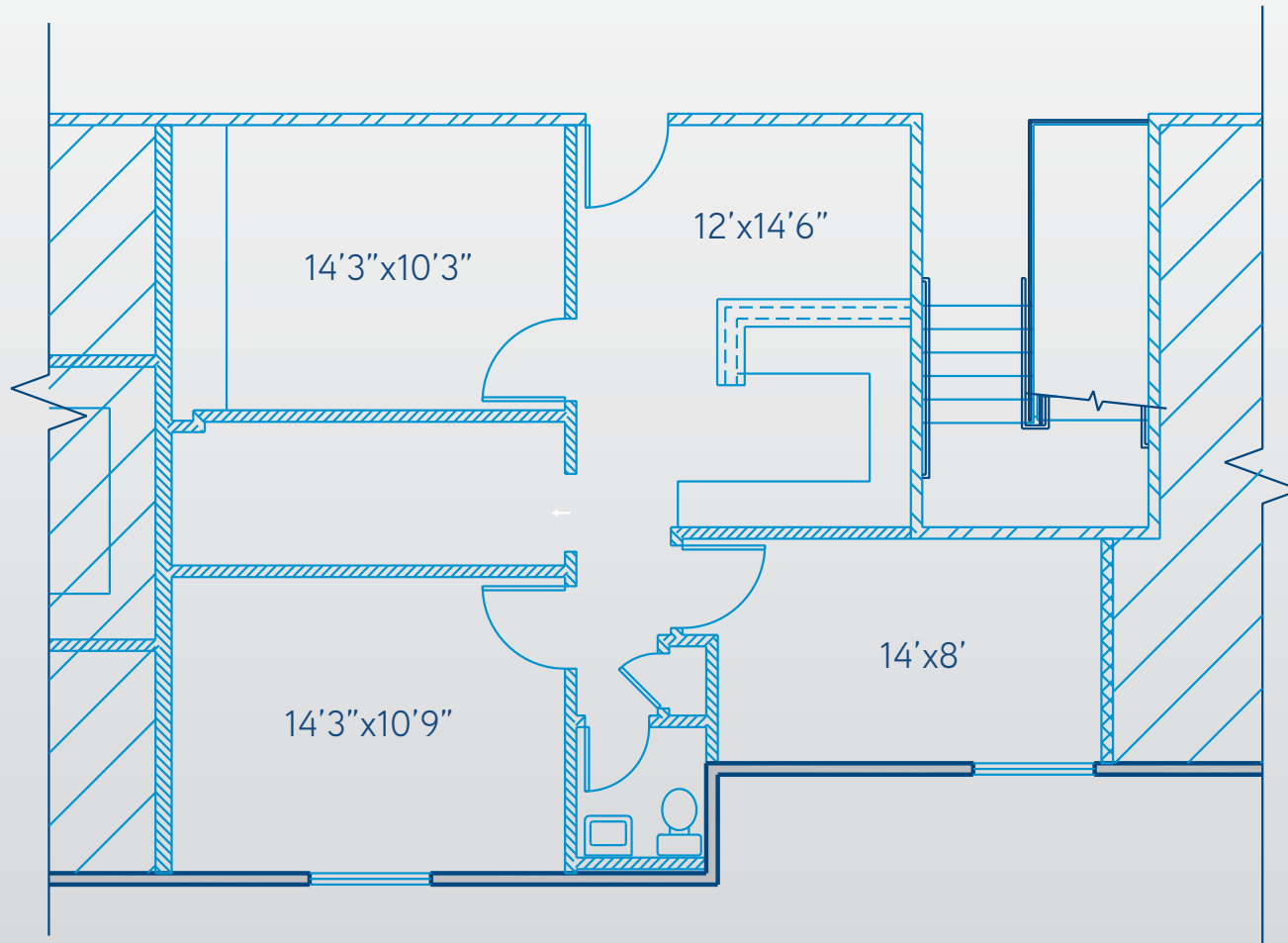
SUITE 204
1,172 SF



SUITE 214
1,265 SF



SUITE 215
902 SF





Accelerating success.

AARON PHILLIPS

License No. 01769480

949 724 5562

aaron.phillips@colliers.com

JOHN WADSWORTH

License No. 01177404

949 724 5528

john.wadsworth@colliers.com

