

FOR LEASE > PUBLIX ANCHORED CENTER

Punta Gorda Crossing

2310 TAMIAMI TRAIL | PUNTA GORDA, FL 33950



Property Details

- > High volume Publix anchored center
- > 3 spaces available - 703 / 2,000 SF
- > Located at signalized intersection
- > Traffic count US 41 - 27,000 AADT
- > Papa John's Pizza - Now Open!!

Asking Rate: \$24.00
CAM \$6.10

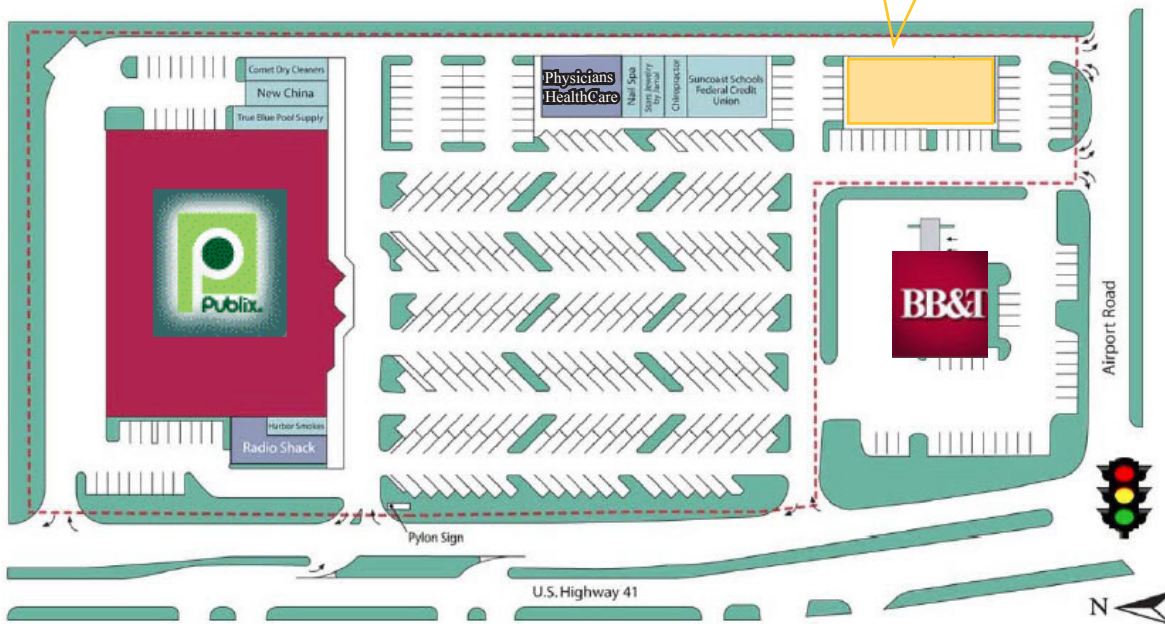


KAREN JOHNSON-CROWTHER
+1 239 418 0300
SOUTHWEST FLORIDA
karen.crowther@colliers.com

DANNIELLE CROWTHER
+1 239 895 1052
SOUTHWEST FLORIDA
danielle.crowther@colliers.com

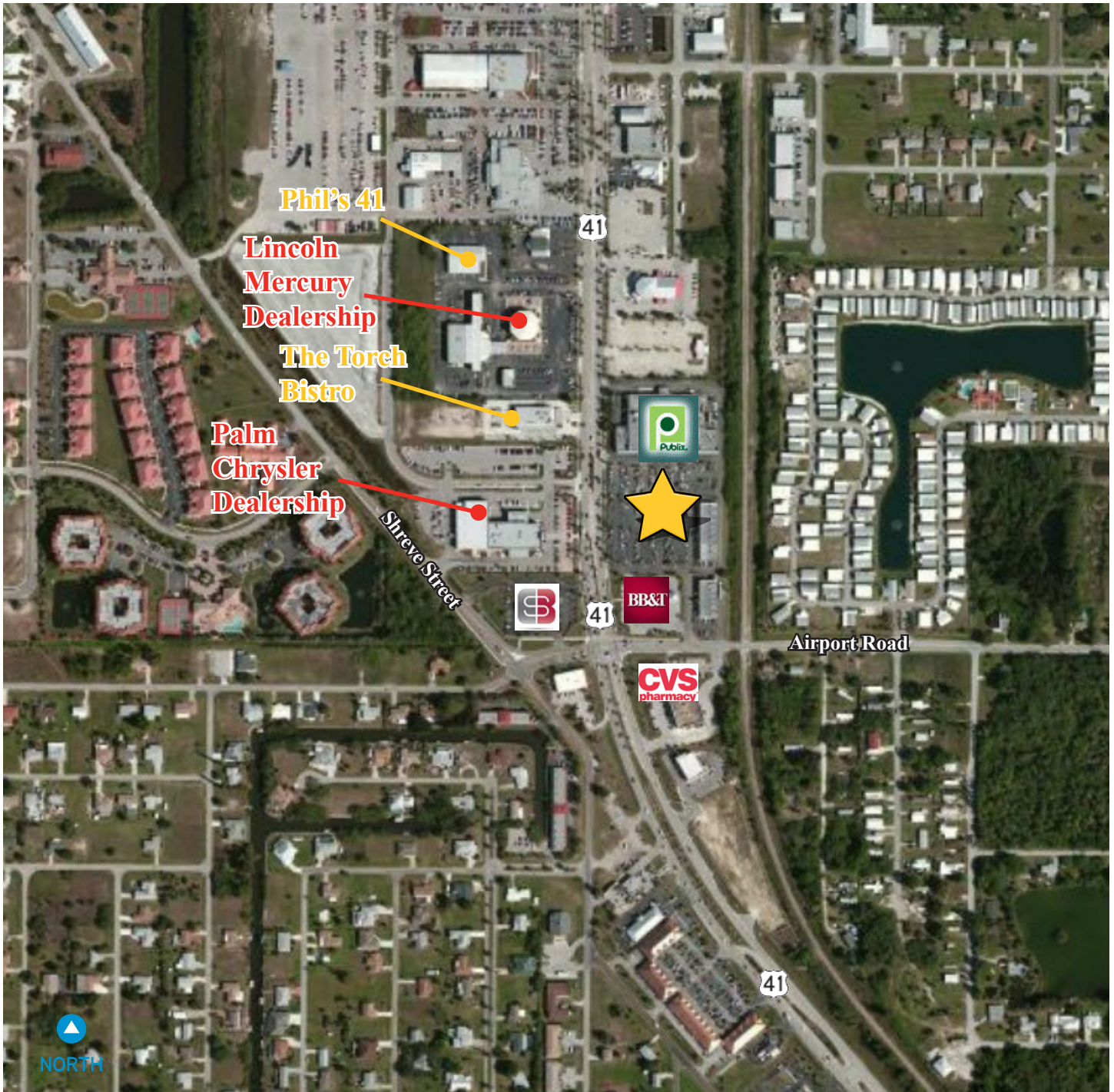
COLLIERS INTERNATIONAL
SOUTHWEST FLORIDA
13241 University Drive, Suite 101
Fort Myers, FL 33907
www.colliers.com

Property Site Plan



| Suite # | Tenant | Sq. Ft. |
|-------------|---------------------------------------|--------------|
| 1101 | Radio Shack | 2,400 |
| 1105 | Harbor Smokes | 800 |
| 1129 | Publix | 44,271 |
| 1157 | True Blue Pool Supply | 1,600 |
| 1161 | New China | 1,400 |
| 1165 | Comet Drycleaner | 1,400 |
| 2101 | Physicians HealthCare Professionals | 3,500 |
| 2113 | Nail Spa | 750 |
| 2117 | Stars Jewelry by Jamal | 1,000 |
| 2121 | Chiropractor | 1,000 |
| 2129 | Suncoast Schools Federal Credit Union | 3,250 |
| 3101 | Papa John's Pizza - Now Open! | 1,200 |
| 3105 | Great Clips Salon | 950 |
| 3107 | AVAILABLE | 703 |
| 3109 | Audiologist | 962 |
| 3117 | AVAILABLE | 2,000 |
| Total | | 67,371 |

Aerial View



Demographics

| Population and Growth | 1 Mile | 3 Mile | 5 Mile |
|--------------------------------|----------|----------|----------|
| Total Population | 5,049 | 20,628 | 40,366 |
| Daytime Population | 4,247 | 12,403 | 18,905 |
| Population Growth, 05-10 | -39 | 1,278 | 2,371 |
| Population Growth %, 05-10 | -0.8% | 6.2% | 5.9% |
| Income | | | |
| Average Household Income | \$59,990 | \$76,264 | \$66,488 |
| Median Household Income | \$37,907 | \$51,040 | \$44,451 |
| Other Demographics | | | |
| Total Households | 2,312 | 10,205 | 19,527 |
| Households w/ Income \$50k+ | 945 | 5,194 | 8,716 |
| Average Household Size | 2.1 | 2.0 | 2.0 |
| Median Age | 57.0 | 63.7 | 61.2 |
| Female Population | 52.8% | 51.7% | 51.4% |
| Population Density | 1,383.2 | 790.4 | 727.6 |
| Business Establishments | 552 | 1,671 | 2,770 |
| Race & Ethnicity | | | |
| White Population % | 89.3% | 93.0% | 91.7% |
| Black Population % | 5.6% | 3.6% | 4.1% |
| Hispanic Population % | 7.3% | 4.7% | 5.4% |
| Asian Population % | 0.9% | 1.1% | 1.4% |
| Education, Population Aged 25+ | | | |
| Population Age 25+ | 4,011 | 17,973 | 33,924 |
| High School Graduate | 1,247 | 5,081 | 10,761 |
| Some College | 973 | 4,099 | 8,040 |
| Bachelor's Degree | 581 | 3,842 | 5,907 |
| Graduate Degree | 414 | 2,241 | 3,486 |
| Housing | | | |
| Housing Units | 3,090 | 14,009 | 25,954 |
| Owner Occupied Units % | 65.1% | 79.8% | 78.3% |

Contact Us

KAREN JOHNSON-CROWTHER
 +1 239 418 0300 EXT 211
 SOUTHWEST FLORIDA
karen.crowther@colliers.com

DANNIELLE CROWTHER
 +1 239 895 1052
 SOUTHWEST FLORIDA
danielle.crowther@colliers.com

COLLIERS INTERNATIONAL
 13241 University Dr, Suite 101
 Fort Myers, FL 33907
www.colliers.com

This document has been prepared by Colliers International for advertising and general information only. Colliers International makes no guarantees, representations or warranties of any kind, expressed or implied, regarding the information including, but not limited to, warranties of content, accuracy and reliability. Any interested party should undertake their own inquiries as to the accuracy of the information. Colliers International excludes unequivocally all inferred or implied terms, conditions and warranties arising out of this document and excludes all liability for loss and damages arising there from. This publication is the copyrighted property of Colliers International and/or its licensor(s). ©2016. All rights reserved. ©2016. All rights reserved.

