

FOR LEASE > INDUSTRIAL



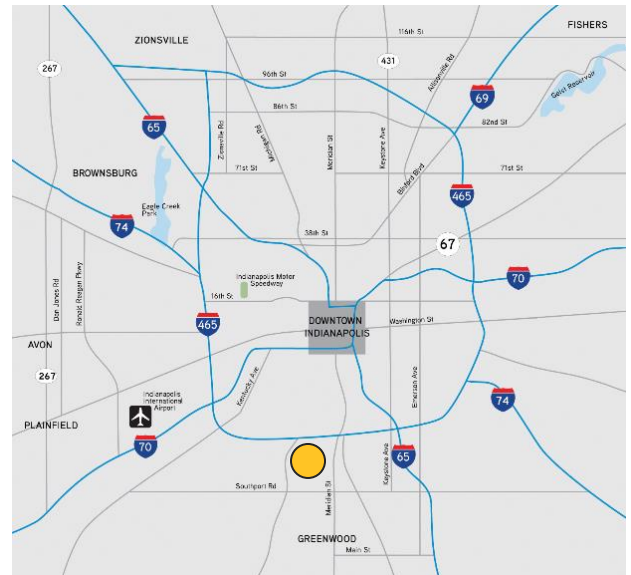
# 1110 W Thompson Road

INDIANAPOLIS, IN



## Property Highlights

- > ± 16,032 SF building
- > ± 6.968 acres
- > 2-story office area
- > Graveled yard for outside storage
- > Zoned I-4-S
- > Multiple cranes throughout warehouse
- > Ideal for trucking or heavy industrial use

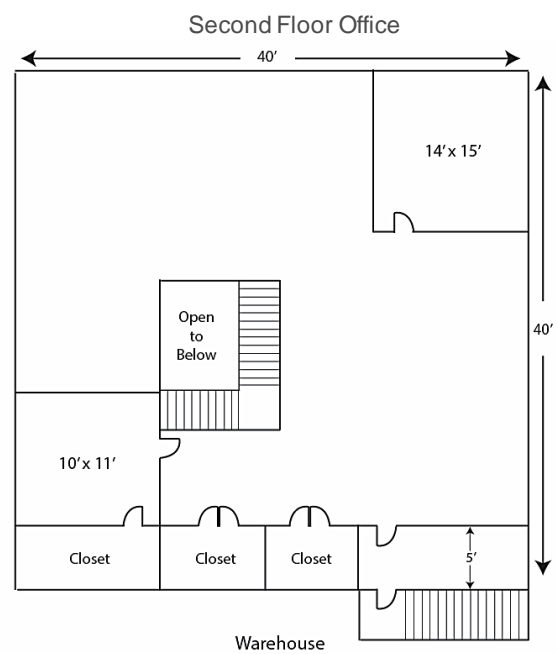
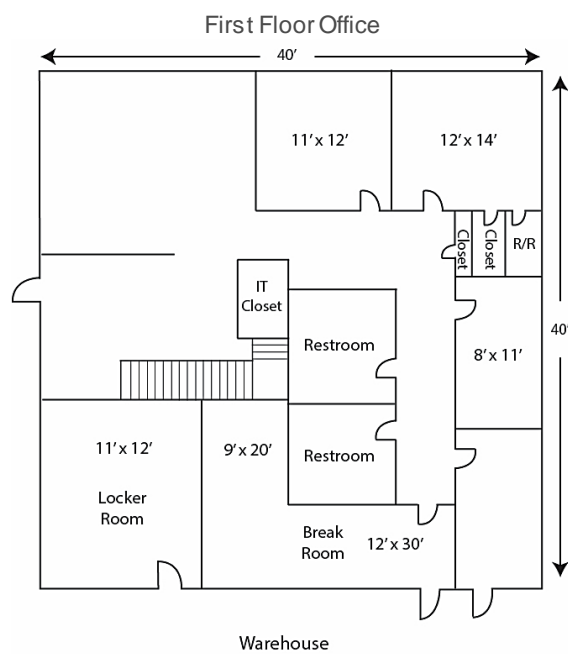


JOHN DEMAREE, SIOR  
317 713 2109  
john.demaree@colliers.com

BRAD WILLIAMS, CCIM  
317 713 2127  
brad.williams@colliers.com

COLLIERS INTERNATIONAL  
241 N Pennsylvania St, Suite 300  
Indianapolis, IN 46204  
colliers.com

## Aerial Map & Floor Plans



## Contact

JOHN DEMAREE, SIOR  
317 713 2109  
[john.demaree@colliers.com](mailto:john.demaree@colliers.com)

BRAD WILLIAMS, CCIM  
317 713 2127  
[brad.williams@colliers.com](mailto:brad.williams@colliers.com)