

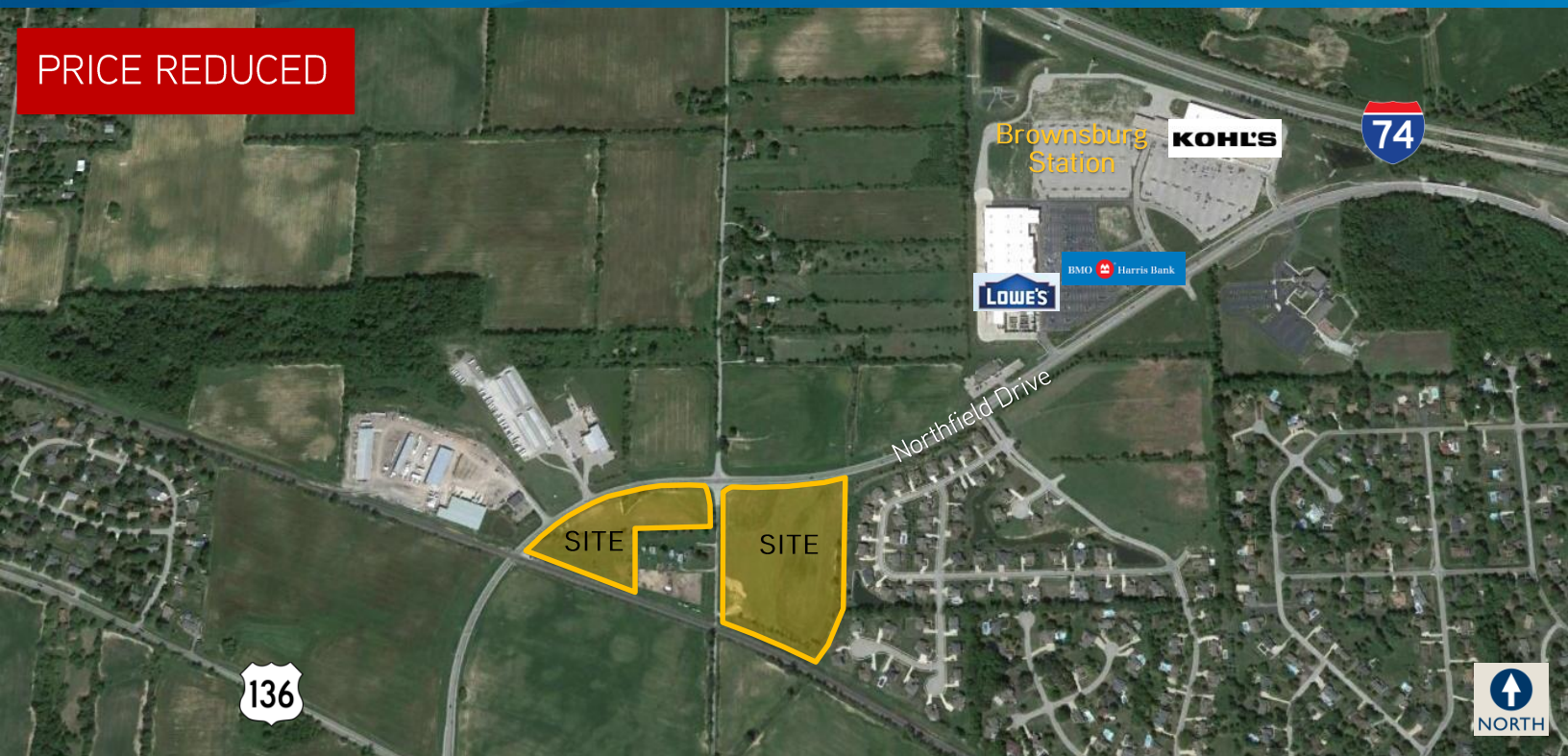
FOR SALE > LAND



2 Sites Along Northfield Drive

CR 625 E & NORTHFIELD DRIVE, BROWNSBURG, IN

PRICE REDUCED



Property Highlights

- > Two sites:
 - ±11.28 acres east of 625 N:
Price Reduced: \$439,900
 - ±5.67 acres west of 625 N
Price Reduced: \$221,900
- > Close to many amenities
- > Frontage along Northfield Drive
- > Located in rapidly growing Brownsburg
- > Excellent access to I-74
- > Zoned C2 (formerly C3) and EC
- > Hendricks County is the 2nd fastest growing county in Indiana

DEMOGRAPHICS

	3 Miles	5 Miles	10 Miles
Population	28,854	51,050	268,790
2017 Population	31,517	56,607	283,634
Total Households	10,641	18,310	103,518
2017 Total Households	11,623	20,274	108,548
Average Household Income	\$79,586	\$81,851	\$68,635
2017 Average Household Income	\$87,587	\$90,250	\$76,621

ANNUAL AVERAGE DAILY TRAFFIC

I-74 & SR 267	33,550 vehicles
---------------	-----------------

STEPHEN DAUM
317 713 2144
stephen.daum@colliers.com

COLLIERS INTERNATIONAL
241 N Pennsylvania St, Suite 300
Indianapolis, IN 46204
colliers.com

Aerial Map & Site Plan

