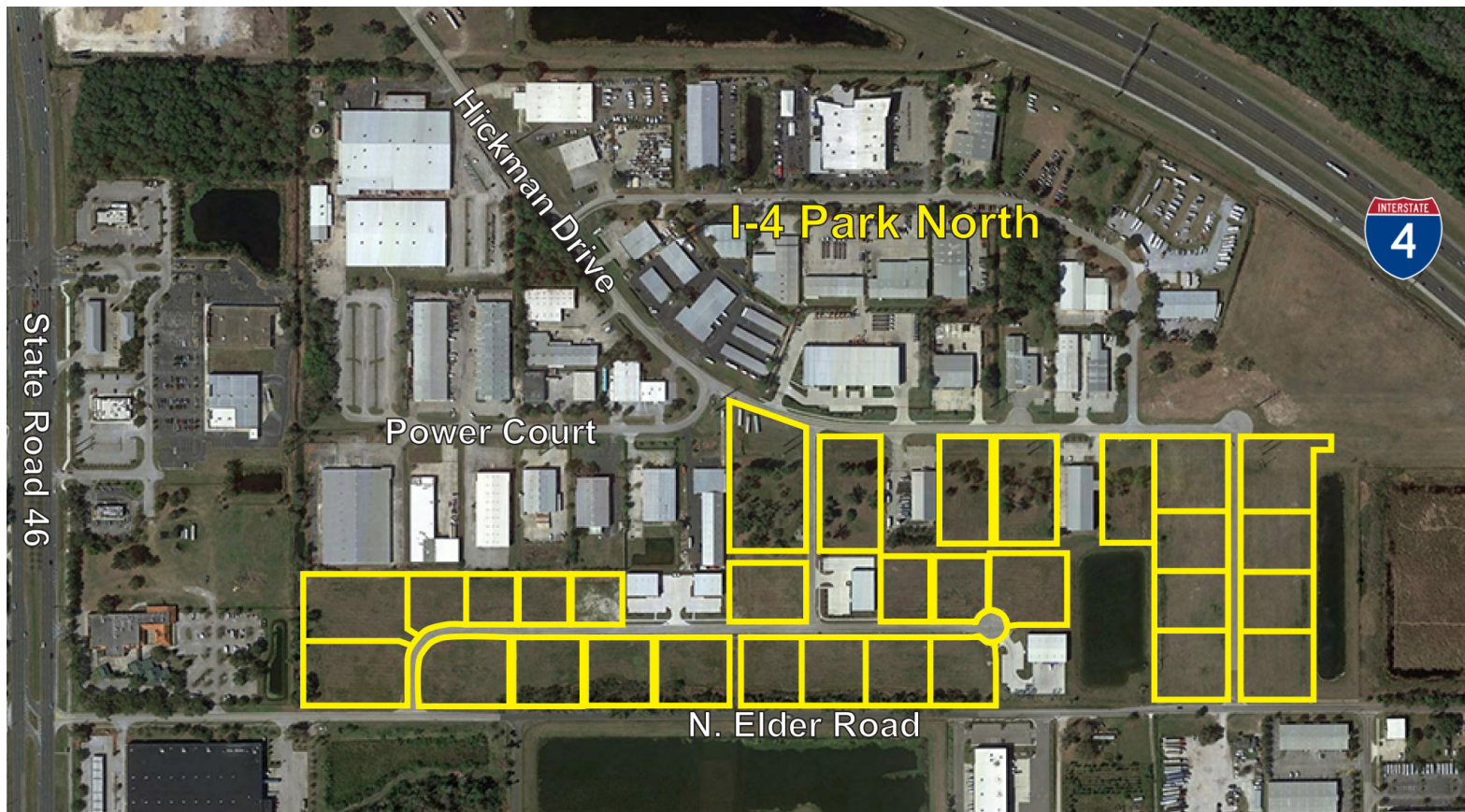


# FOR LEASE INDUSTRIAL BUILD-TO-SUITS

State Road 46 and Hickman Drive  
Sanford, FL 32771

Colliers  
INTERNATIONAL

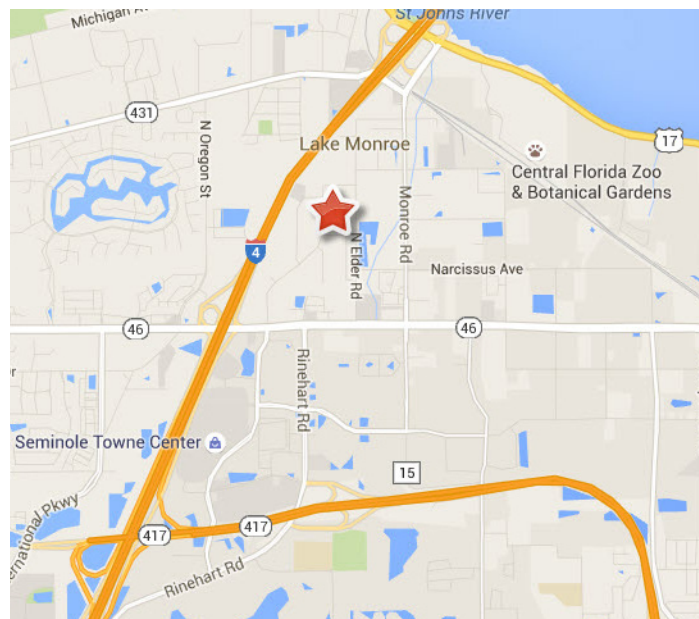


## Features

- › You design the building(s)
- › Lot sizes range from 0.5 to 1.8 acres
- › Building sizes range from 5,000 to 30,000 SF
- › Parcels feature off-site retention and are permit ready
- › Excellent access to Interstate 4
- › An abundance of restaurants and shopping nearby
- › Outdoor storage available
- › Water and sewer
- ›

## Location

Located just minutes from the Interstate 4 and State Road 46 interchange. Sites are positioned between Elder Road and Hickman Drive in Sanford, Florida within the North Seminole County I-4 Corridor.



For video and more information please visit: <https://vimeo.com/199009516/cecf78c1d8>

# FOR LEASE

## INDUSTRIAL BUILD-TO-SUITS

State Road 46 and Hickman Drive  
Sanford, FL 32771



### Area Amenities



### CONTACT US

WILLIAM E. PARKE, SIOR  
+1 407 362 6149  
[bill.parke@colliers.com](mailto:bill.parke@colliers.com)

This document/email has been prepared by Colliers International for advertising and general information only. Colliers International makes no guarantees, representations or warranties of any kind, expressed or implied, regarding the information including, but not limited to, warranties of content, accuracy and reliability. Any interested party should undertake their own inquiries as to the accuracy of the information. Colliers International excludes unequivocally all inferred or implied terms, conditions and warranties arising out of this document and excludes all liability for loss and damages arising there from. This publication is the copyrighted property of Colliers International and /or its licensor(s). © 2016. All rights reserved. This communication is not intended to cause or induce breach of an existing listing agreement.

COLLIERS INTERNATIONAL  
255 South Orange Avenue  
Suite 1300  
Orlando, FL 32801  
+1 407 843 1723  
[www.colliers.com](http://www.colliers.com)