



AVAILABLE

Lanes Mill Marketplace



COLLIERS INTERNATIONAL
Ten Penn Center
1801 Market Street, Suite 500
Philadelphia, PA 19103
www.colliers.com/philadelphia

4817 U.S. HIGHWAY 9 | HOWELL, NEW JERSEY



@ColliersPhilly



Colliers Philly



colliers.com/philadelphia



Property Features

- › 23,630 SF pad site located in shopping center with retailers including Target, Lowe's, Stop & Shop, and more
- › Situated off of the highly trafficked Route 9, with traffic count of 38,000+ ADT
- › Located in a regional shopping district with easy access to I-95
- › Tremendous signage opportunity
- › Ideal location for retail or medical use

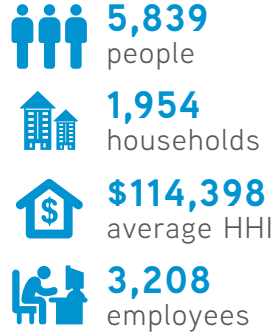
The foregoing information was furnished to us by sources which we deem to be reliable, but no warranty or representation is made as to the accuracy thereof. Subject to correction of errors, omissions, change of price, prior sale or withdrawal from market without notice. The aerial image is intended to provide a general outline of the subject property. It is not a survey nor should it be relied upon for purposes of determining property lines or boundaries.

Site Plan

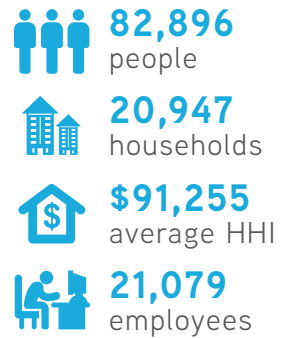


DEMOGRAPHICS

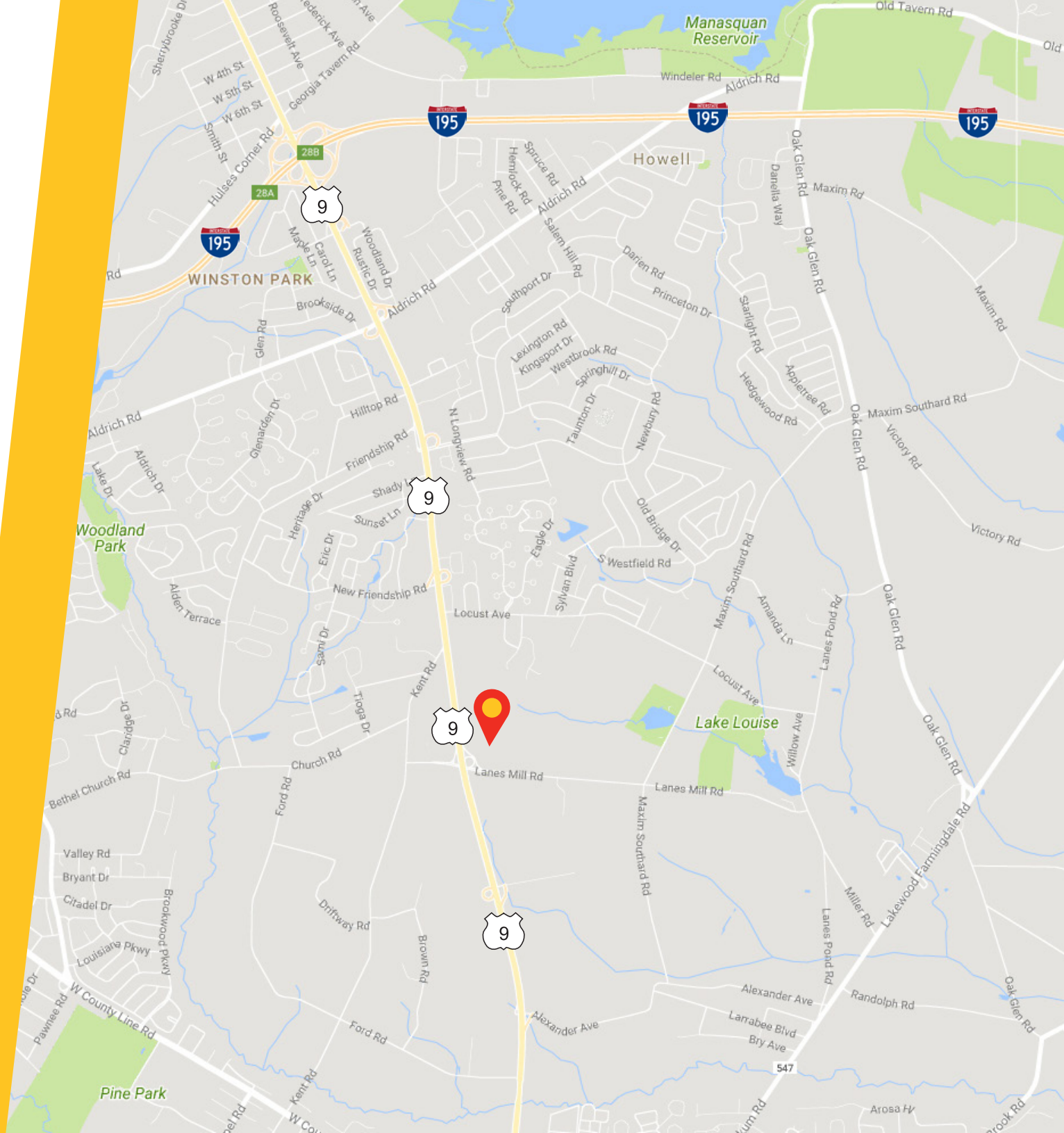
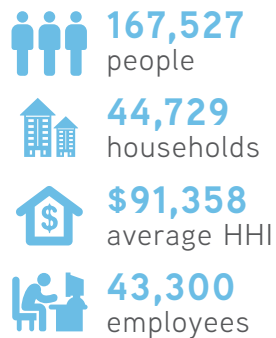
WITHIN 1 MILE



WITHIN 3 MILES



WITHIN 5 MILES





CONTACT US

TODD SUSSMAN
SENIOR VICE PRESIDENT
+1 215 928 7575
todd.sussman@colliers.com

JOSH GOLDFINE
VICE PRESIDENT
+1 215 928 7565
josh.goldfine@colliers.com

COLLIERS INTERNATIONAL
Ten Penn Center
1801 Market Street, Suite 500
Philadelphia, PA 19103
www.colliers.com/philadelphia

