

FOR LEASE > COMMERCIAL SPACE

1636 Broadway Blvd

KANSAS CITY, MO



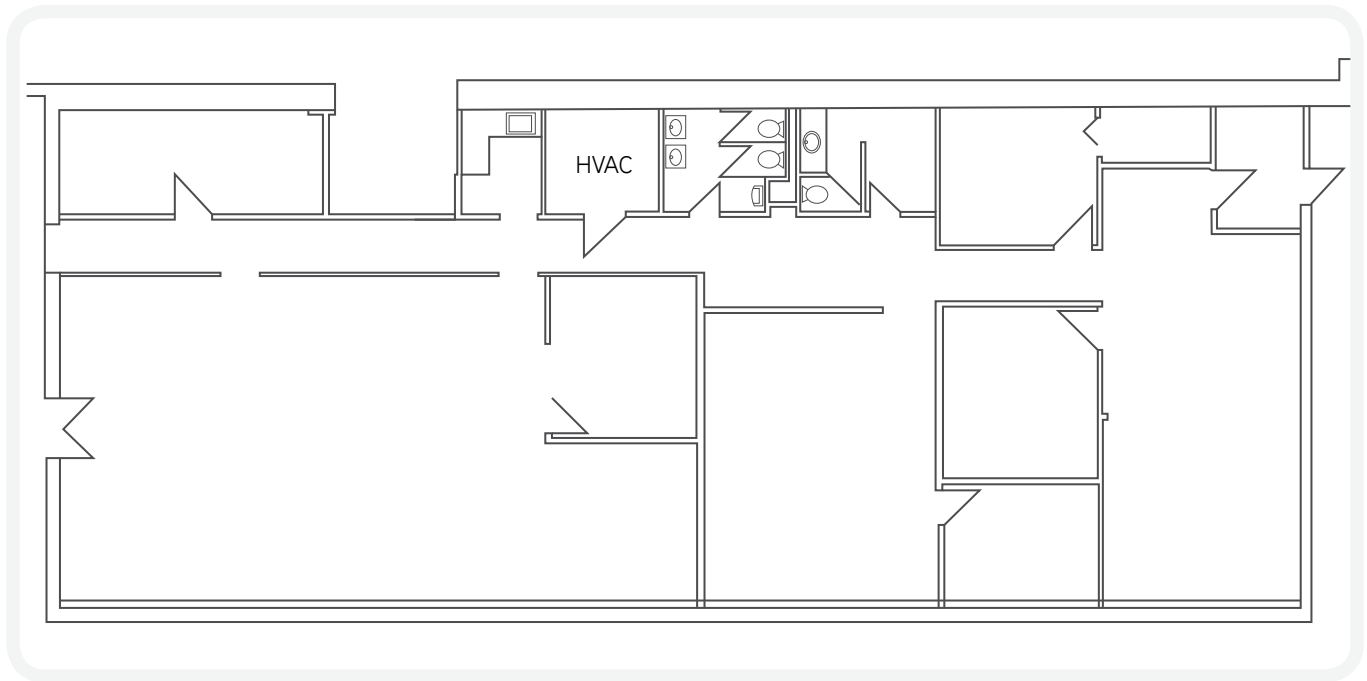
PROPERTY FEATURES

- > 4,000± SF total
- > 2,825± SF office
- > 100% air-conditioned
- > 12' ceiling height
- > Dock-loading door
- > Off-street fenced parking
- > Located across from Kauffman Center
- > Excellent access to I-70 & I-35
- > \$6.50 PSF, modified gross

DOUG HEDRICK
+1 816 556 1136
KANSAS CITY, MO
doug.hedrick@colliers.com

COLLIERS INTERNATIONAL
4520 Main Street, Suite 1000
Kansas City, MO 64111
www.colliers.com

1636 Broadway Blvd Floor Plan



CONTACT:

DOUG HEDRICK
+1 816 556 1136
KANSAS CITY, MO
doug.hedrick@colliers.com