

LAND > FOR SALE

Martin City - with Prominent 150 Hwy Frontage



13700 WASHINGTON STREET, LOT 6, KANSAS CITY, MISSOURI

Excellent Access to 150 Hwy



PROPERTY FEATURES

For Sale

- > Sale price: \$400,000
- > Or build-to-suit pad site

Lot / Land Size

- > 0.79 acres

Zoning

- > CB3-3 (community business)

Location

- > Adjacent to 135th Street and State Line
- > Excellent access to 150 Hwy

Utilities

- > Water: KC Water Services
- > Electricity: KCPL
- > Gas: Missouri Gas Energy
- > Sewer: KCMO Planning and Development

JIM GATES SIOR
+1 816 556 1138
KANSAS CITY, MO
jim.gates@colliers.com

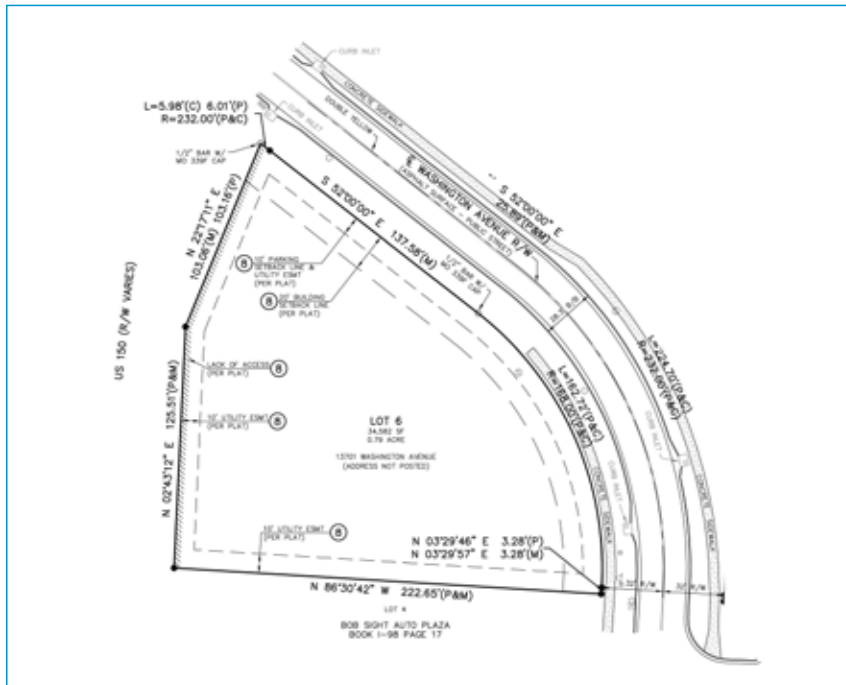
COLLIERS INTERNATIONAL
4520 Main Street, Suite 1000
Kansas City, MO 64111
www.colliers.com

13700 Washington Street

Lot 6



Site Plan



Contact

JIM GATES SIOR
+1 816 556 1138
KANSAS CITY, MO
jim.gates@colliers.com

COLLIERS INTERNATIONAL
4520 Main Street, Suite 1000
Kansas City, MO 64111
www.colliers.com