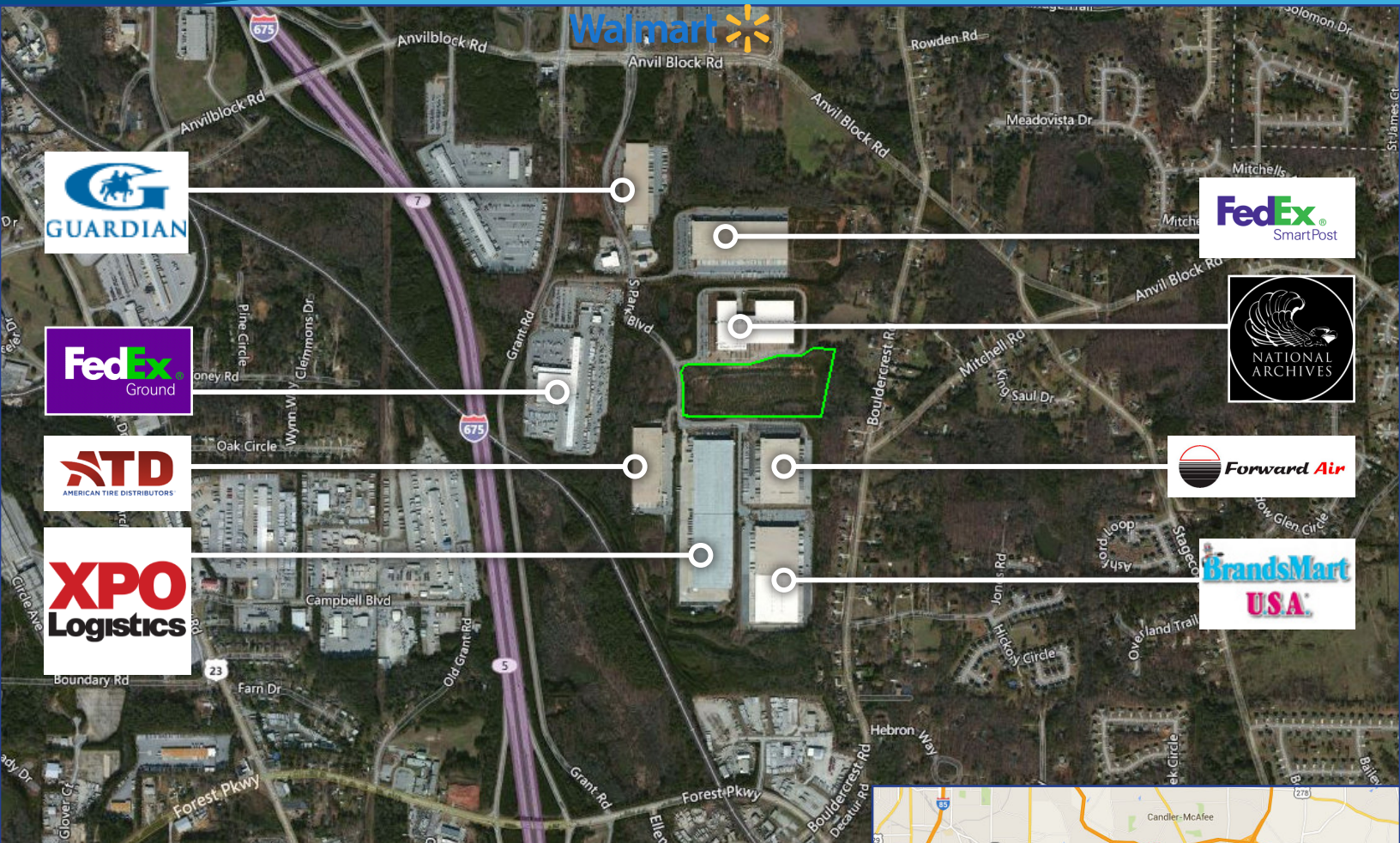


+/- 21.38 ACRES > FOR SALE > CLAYTON COUNTY

**Colliers**  
INTERNATIONAL

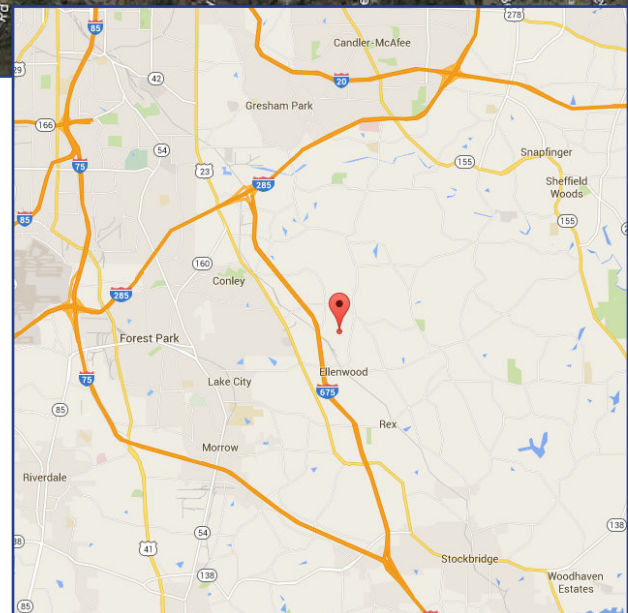
## Industrial Development Site - Southpark

UNINCORPORATED CLAYTON COUNTY, GA



### PROPERTY FEATURES

- > Zoned: HI (Heavy Industrial)
- > Site Planned for up to +/- 420,000 SF
- > All Utilities Available
- > Price: \$2,500,000 (\$116,932/acre, +/- \$5.95 FAR)



ROB JORDAN, SVP  
+1 404 574 1062 DIRECT  
rob.jordan@colliers.com

DAVID WALMSLEY, SVP  
+1 404 574 1064 DIRECT  
david.walmsley@colliers.com

CALDWELL ZIMMERMAN, EVP  
+1 404 877 9234 DIRECT  
caldwell.zimmerman@colliers.com

COLLIERS INTERNATIONAL  
Promenade, Suite 800  
1230 Peachtree St NE  
Atlanta, Georgia 30309-3574  
www.colliers.com

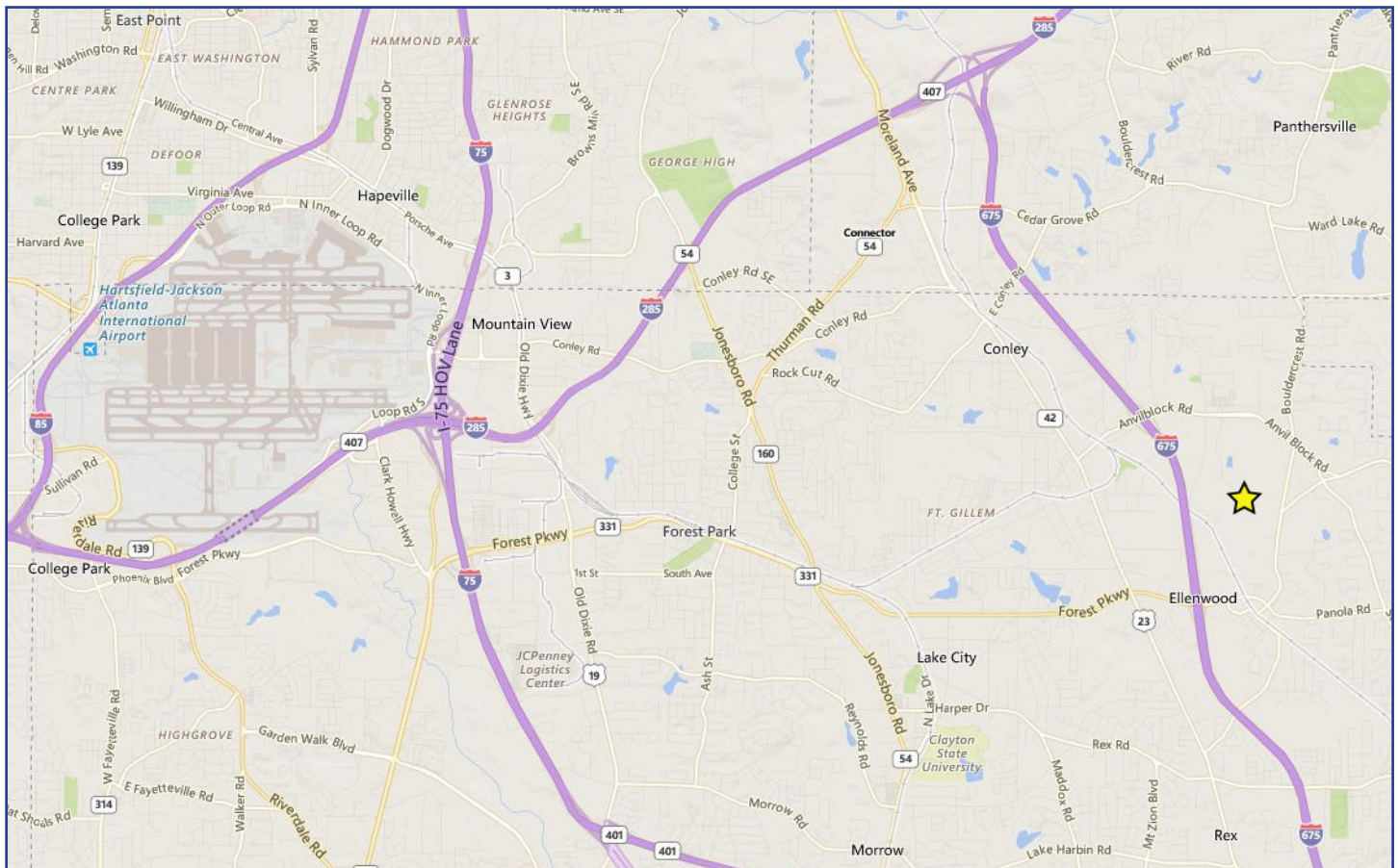
## Southpark > Description

---

- > Size: +/- 21.38 acres
- > Location: The Property is located in unincorporated Clayton County in the Southpark Industrial Park. Situated between I-675 and Bouldercrest Rd, the property sits +/- 1.2 miles from the nearest I-675 interchange, +/- 6.5 miles from Hartsfield Jackson International Airport and +/- 10.3 miles from downtown Atlanta.
- > Condition: The Property was cleared and rough graded when the industrial park was developed.
- > Zoning: Heavy Industrial (HI) Unconditional
- > Entitlement: Site planned for up to +/- 420,000 SF of industrial space (37-45% coverage)
- > Frontage: +/- 1,123' of frontage on S Park Blvd
- > Utilities: Water and Sanitary Sewer Available on South Park Blvd
- > Price: \$2,500,000 (\$116,932/acre, +/- \$5.95 FAR)

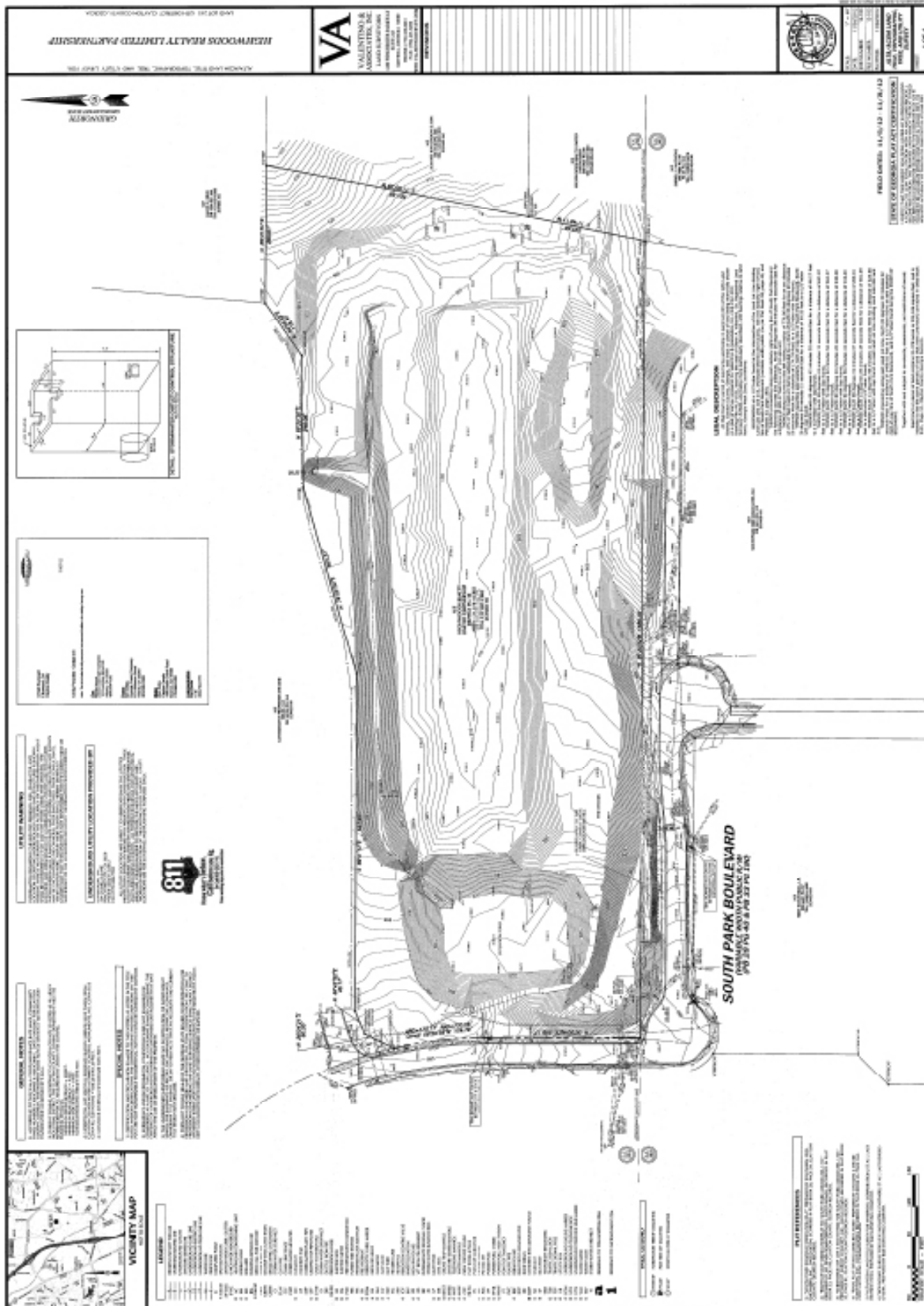


## Southpark > Location



### Driving Distance

Exit 7, I-675:	1.3 miles
Exit 5, I-675:	3.3 miles
Exit 237, I-75:	7.5 miles
I-675 / I-285 Interchange:	4.2 miles
I-675 / I-75 Interchange:	7.6 miles
I-75 / I-285 Interchange:	8.4 miles
Hartsfield Jackson International Airport:	12.6 miles



This document has been prepared by Colliers International for advertising and general information only. Colliers International makes no guarantees, representations or warranties of any kind, expressed or implied, regarding the information including, but not limited to, warranties of content, accuracy and reliability. Any interested party should undertake their own inquiries as to the accuracy of the information. Colliers International excludes unequivocally all inferred or implied terms, conditions and warranties arising out of this document and excludes all liability for loss and damages arising there from. This publication is the copyrighted property of Colliers International and/or its licensor(s). ©2015. All rights reserved.



## Southpark > Conceptual Plans

