

ENTERPRISE LOGISTICS CENTER

Enterprise Way
Oakwood, GA 30566

NEW DEVELOPMENT

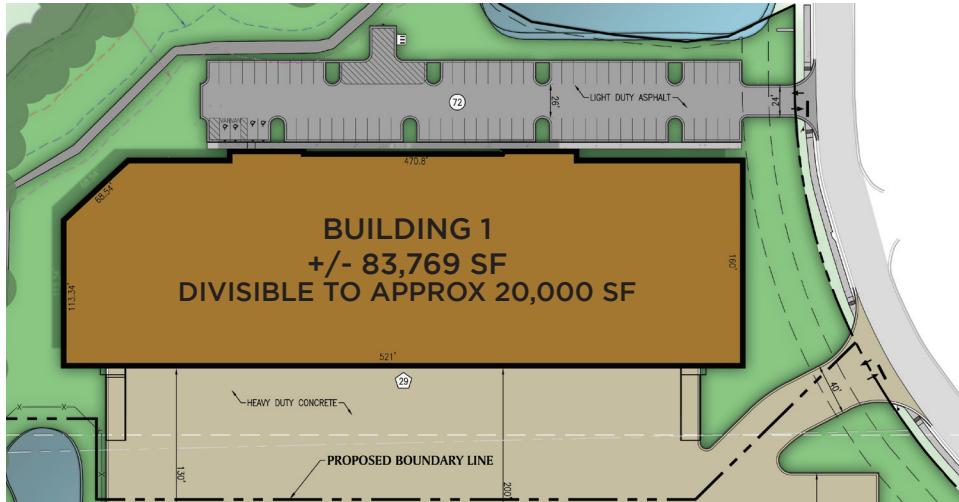
- **13.28 acres**
- **Up to 177,864 SF for lease**



Colliers Atlanta
1230 Peachtree Street NE, Suite 800
Atlanta, Georgia 30309
colliers.com/atlanta

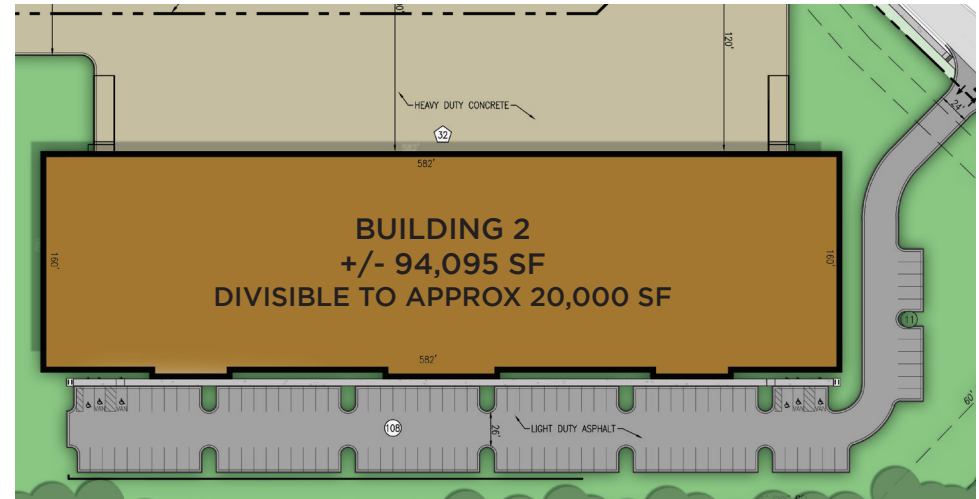


BUILDING 1



Address	Enterprise Way, Oakwood, GA 30566
Proposed Building SF	83,769 SF, divisible to approx 20,000 SF
Clear Height	32' clear
Dock Doors	29 (9' x 10') dock doors
Drive-In Doors	2 (12' x 14') drive-in doors
Auto Parking	72 auto parks
Column Spacing	52' x 50'
Roof	60 mil, R-20 TPO
Sprinkler System	ESFR
Slab	6" unreinforced, 4,000 PSI
Truck Court	200' all-concrete shared truck court
Additional Features	5' x 5' clerestory windows

BUILDING 2



Address	Enterprise Way, Oakwood, GA 30566
Proposed Building SF	94,095 SF, divisible to approx 20,000 SF
Clear Height	32' clear
Dock Doors	32 (9' x 10') dock doors
Drive-In Doors	2 (12' x 14') drive-in doors
Auto Parking	119 auto parks
Column Spacing	52' x 50'
Roof	60 mil, R-20 TPO
Sprinkler System	ESFR
Slab	6" unreinforced, 4,000 PSI
Truck Court	200' all-concrete shared truck court
Additional Features	5' x 5' clerestory windows

OVERALL SITE PLAN - BUILDINGS 1 & 2



ENTERPRISE
LOGISTICS CENTER

ENTERPRISE LOGISTICS CENTER

LOCATION

Points of Interest

Hartsfield-Jackson Int'l. Airport	54.6 Miles
Atlanta CBD	45.8 Miles
UPS Package Hub (Buford)	7.6 Miles
FedEx Ground Hub (Braselton)	12.7 Miles
Inland Port - Gainesville	15.9 Miles

Interstates

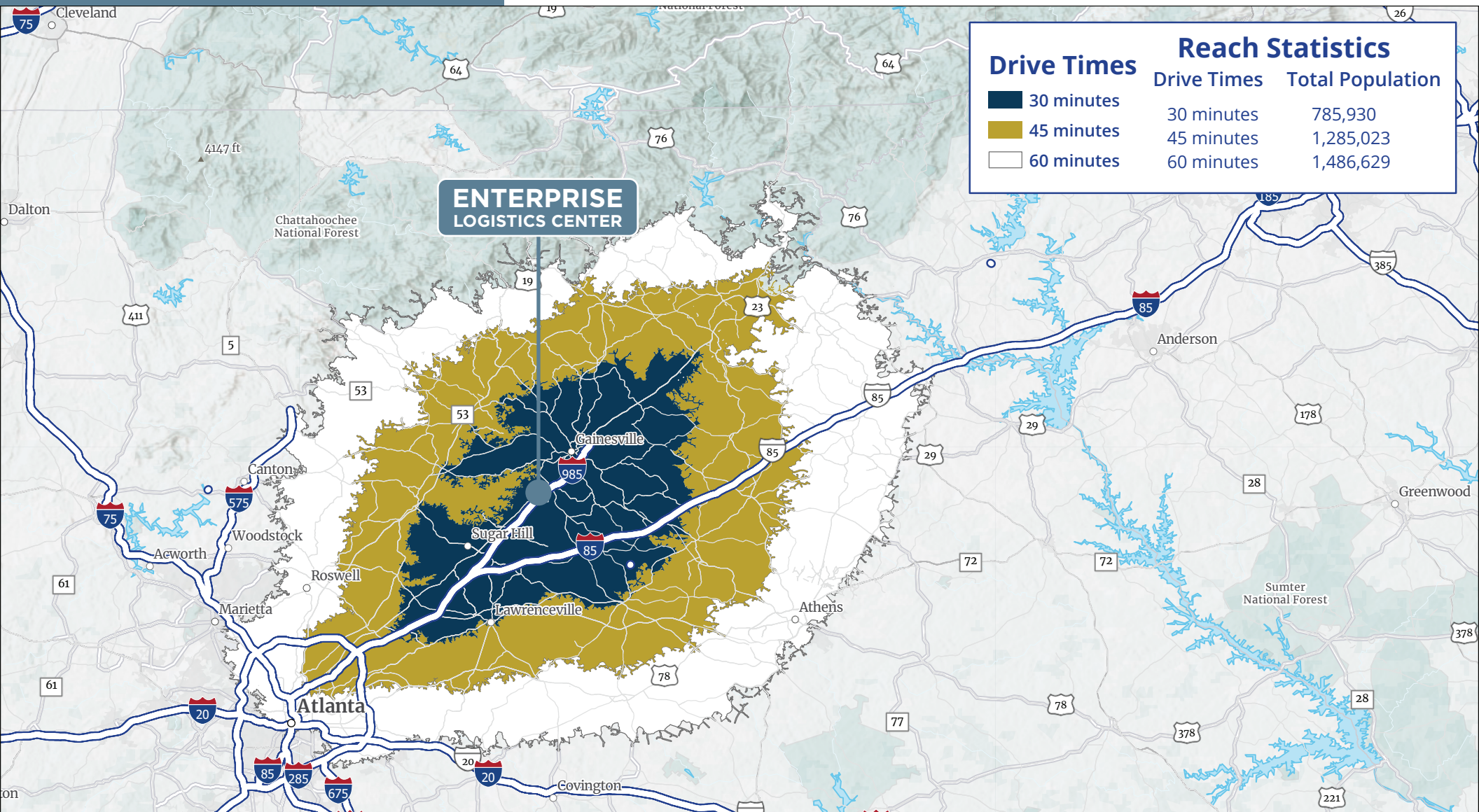
Interstate 985 (via HF Reed Industrial Pkwy)	1.1 Miles
Interstate 985 (via Highway 53)	2.2 Miles
Interstate 85	14.8 Miles
Interstate 285	32.8 Miles



ENTERPRISE LOGISTICS CENTER

LOCATION

The asset features immediate access to I-985 via the H. F. Reed Industrial Parkway interchange. The Georgia Ports Authority, Hall County, and Norfolk Southern have commenced construction on the new Northeast Georgia Inland Port, which will offer tenants direct rail access via Norfolk Southern to the Port of Savannah.



ENTERPRISE LOGISTICS CENTER

Enterprise Way
Oakwood, GA 30566

Harrison Marsteller

+1 404 877 9219
harrison.marsteller@colliers.com

Sean Boswell

+1 404 877 9268
sean.boswell@colliers.com

Logan Devereaux

+1 770 696 3092
logan.devereaux@colliers.com



This document has been prepared by Colliers for advertising and general information only. Colliers makes no guarantees, representations or warranties of any kind, expressed or implied, regarding the information including, but not limited to, warranties of content, accuracy and reliability. Any interested party should undertake their own inquiries as to the accuracy of the information. Colliers excludes unequivocally all inferred or implied terms, conditions and warranties arising out of this document and excludes all liability for loss and damages arising there from. This publication is the copyrighted property of Colliers and /or its licensor(s). © 2025. All rights reserved. This communication is not intended to cause or induce breach of an existing listing agreement.