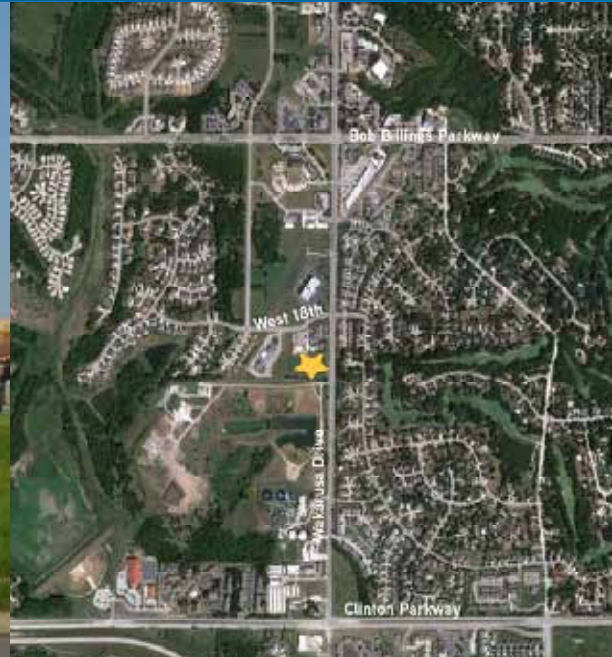


FOR SALE > LAND



1900 Wakarusa

LAWRENCE, KANSAS



Property Description

This prime site for development is located on Wakarusa Drive between Bob Billings and Clinton Parkway. The lot is surrounded by professional office buildings to the north, city-owned land to the south, and upscale residential to the east. The property features mostly level to gently sloping terrain. Municipal utilities are available.

Property Highlights

- > Land size: 2.7 acres
- > Zoning: IBP
- > Sale price: \$525,000

Contact

MARILYN BITTENBENDER SIOB, CCIM
+1 785 865 5100 | EXT. 105
LAWRENCE, KS
marilyn.bittenbender@colliers.com

COLLIERS INTERNATIONAL
805 New Hampshire, Suite C
Lawrence, KS 66044
www.colliers.com

