

FOR LEASE > ±6,935 SF CLASS A OFFICE SPACE

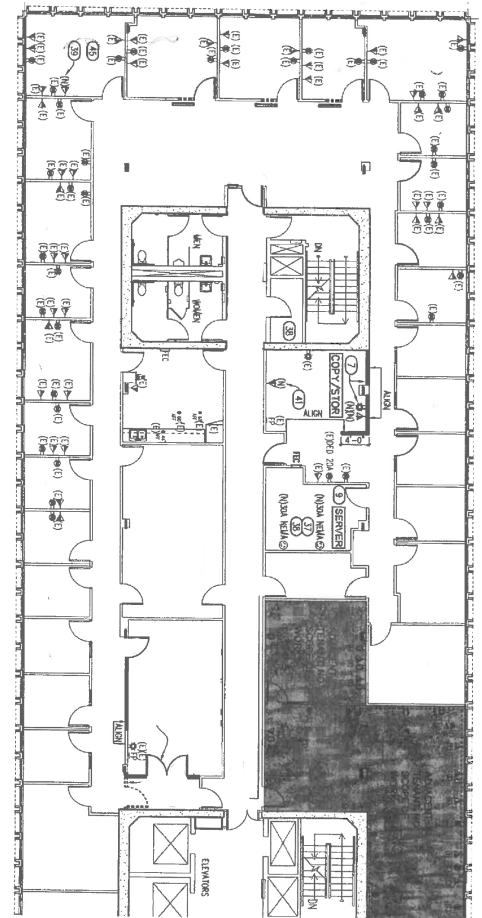
2150 Shattuck Avenue

BERKELEY, CA 94704



Property Description

- > **±6,935 SF - 6th Floor**
- > Glassline on two sides
- > 28 Offices, Kitchen, 2 Conference Rooms
- > \$4.25 psf, full service
- > On site parking and security



Contact

AILEEN DOLBY

+1 510 433 5815

aileen.dolby@colliers.com

CA License No. 00949630