

Whispering Wind

CORPORATE CENTER

FOR LEASE

WHISPERING WIND CORPORATE CENTER

2205 & 2225 W. WHISPERING WIND DRIVE

AVAILABLE

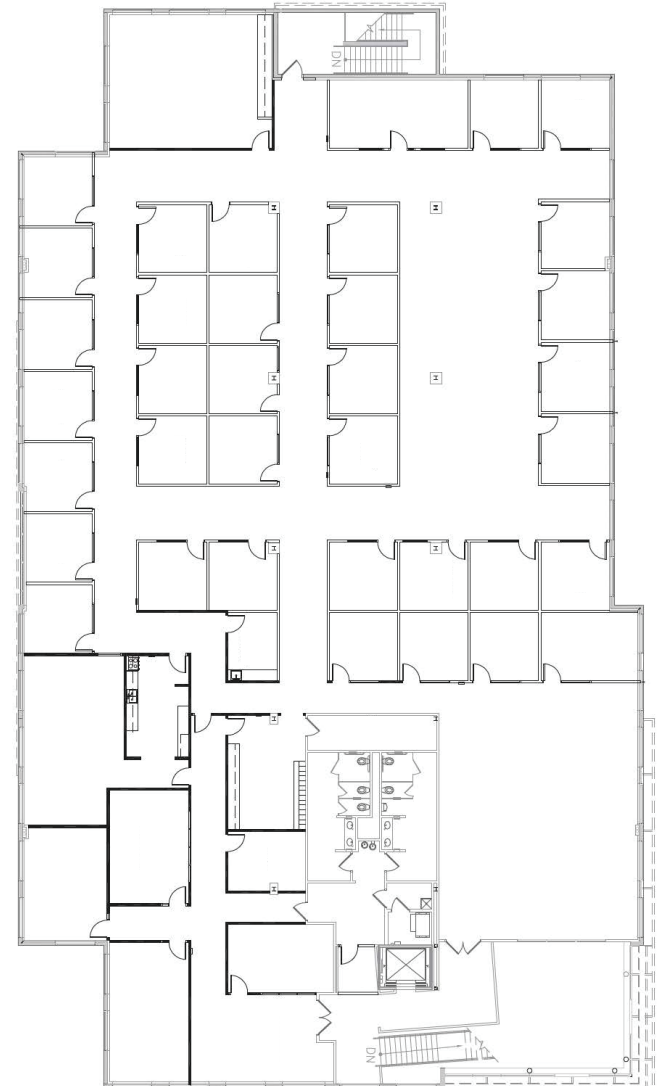
SUITE 200

±19,154 RSF

FOR MORE INFORMATION PLEASE CALL

RYAN TIMPANI
Senior Vice President
602 222 5193
ryan.timpani@colliers.com

KYLE CAMPBELL
Senior Associate
602 222 5062
kyle.campbell@colliers.com



This document/email has been prepared by Colliers International for advertising and general information only. Colliers International makes no guarantees, representations or warranties of any kind, expressed or implied, regarding the information including, but not limited to, warranties of content, accuracy and reliability. Any interested party should undertake their own inquiries as to the accuracy of the information. Colliers International excludes unequivocally all inferred or implied terms, conditions and warranties arising out of this document and excludes all liability for loss and damages arising there from. This publication is the copyrighted property of Colliers International and /or its licensor(s). © 2017. All rights reserved. This communication is not intended to cause or induce breach of an existing listing agreement



Whispering Wind

CORPORATE CENTER

FOR LEASE

WHISPERING WIND CORPORATE CENTER

2205 & 2225 W. WHISPERING WIND DRIVE

AVAILABLE

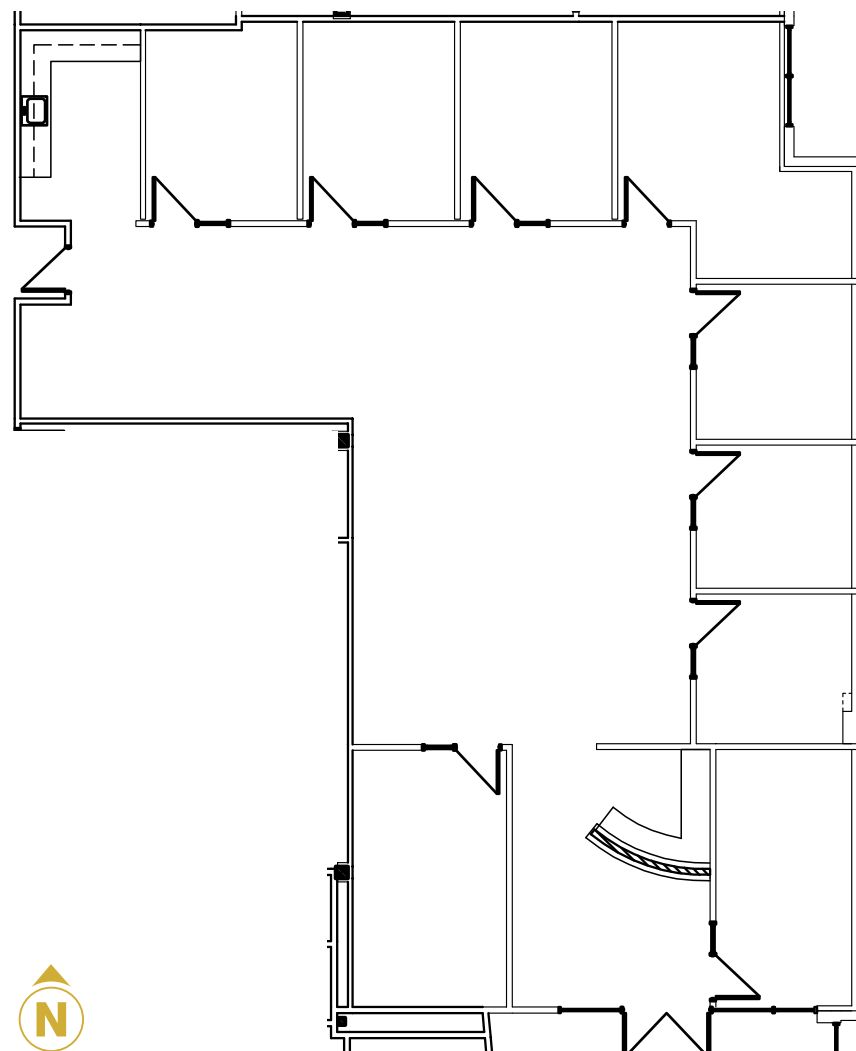
SUITE 100

±3,551 RSF

FOR MORE INFORMATION PLEASE CALL

RYAN TIMPANI
Senior Vice President
602 222 5193
ryan.timpani@colliers.com

KYLE CAMPBELL
Senior Associate
602 222 5062
kyle.campbell@colliers.com



This document/email has been prepared by Colliers International for advertising and general information only. Colliers International makes no guarantees, representations or warranties of any kind, expressed or implied, regarding the information including, but not limited to, warranties of content, accuracy and reliability. Any interested party should undertake their own inquiries as to the accuracy of the information. Colliers International excludes unequivocally all inferred or implied terms, conditions and warranties arising out of this document and excludes all liability for loss and damages arising there from. This publication is the copyrighted property of Colliers International and /or its licensor(s). © 2017. All rights reserved. This communication is not intended to cause or induce breach of an existing listing agreement



Whispering Wind

CORPORATE CENTER

FOR LEASE

WHISPERING WIND CORPORATE CENTER

2205 & 2225 W. WHISPERING WIND DRIVE

AVAILABLE

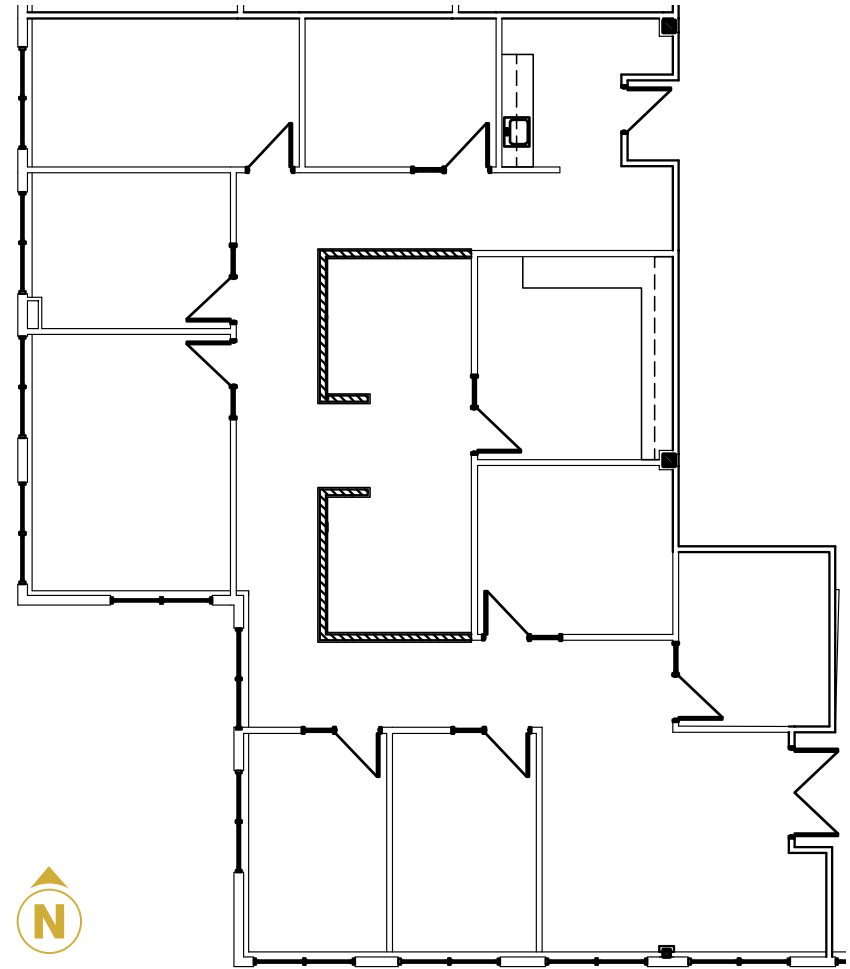
SUITE 101

±3,334 RSF

FOR MORE INFORMATION PLEASE CALL

RYAN TIMPANI
Senior Vice President
602 222 5193
ryan.timpani@colliers.com

KYLE CAMPBELL
Senior Associate
602 222 5062
kyle.campbell@colliers.com



This document/email has been prepared by Colliers International for advertising and general information only. Colliers International makes no guarantees, representations or warranties of any kind, expressed or implied, regarding the information including, but not limited to, warranties of content, accuracy and reliability. Any interested party should undertake their own inquiries as to the accuracy of the information. Colliers International excludes unequivocally all inferred or implied terms, conditions and warranties arising out of this document and excludes all liability for loss and damages arising there from. This publication is the copyrighted property of Colliers International and /or its licensor(s). © 2017. All rights reserved. This communication is not intended to cause or induce breach of an existing listing agreement



Whispering Wind

CORPORATE CENTER

FOR LEASE

WHISPERING WIND
CORPORATE CENTER

2205 & 2225 W. WHISPERING WIND DRIVE

AVAILABLE

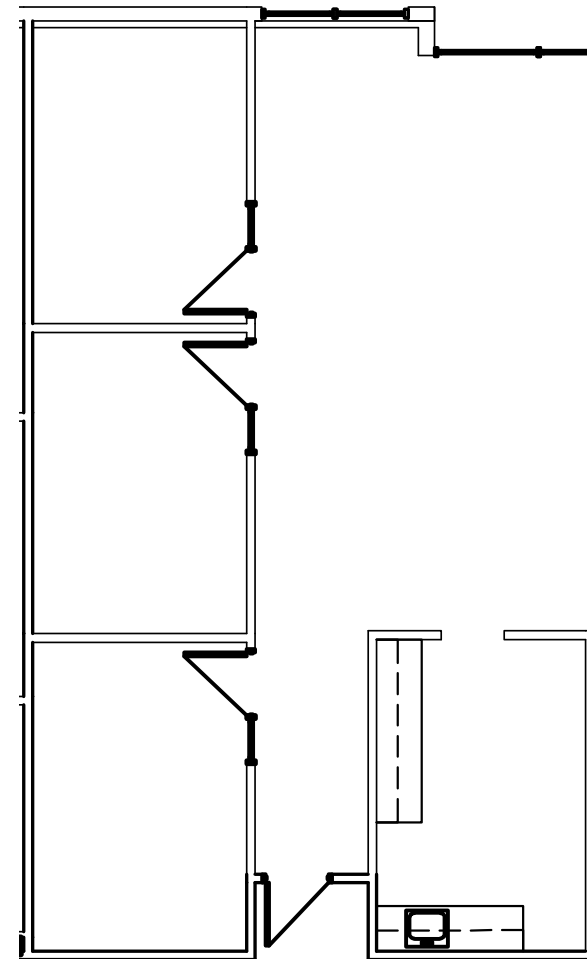
SUITE 103

±1,375 RSF

FOR MORE INFORMATION PLEASE CALL

RYAN TIMPANI
Senior Vice President
602 222 5193
ryan.timpani@colliers.com

KYLE CAMPBELL
Senior Associate
602 222 5062
kyle.campbell@colliers.com



This document/email has been prepared by Colliers International for advertising and general information only. Colliers International makes no guarantees, representations or warranties of any kind, expressed or implied, regarding the information including, but not limited to, warranties of content, accuracy and reliability. Any interested party should undertake their own inquiries as to the accuracy of the information. Colliers International excludes unequivocally all inferred or implied terms, conditions and warranties arising out of this document and excludes all liability for loss and damages arising there from. This publication is the copyrighted property of Colliers International and /or its licensor(s). © 2017. All rights reserved. This communication is not intended to cause or induce breach of an existing listing agreement



Whispering Wind

CORPORATE CENTER

FOR LEASE

WHISPERING WIND CORPORATE CENTER

2205 & 2225 W. WHISPERING WIND DRIVE

AVAILABLE

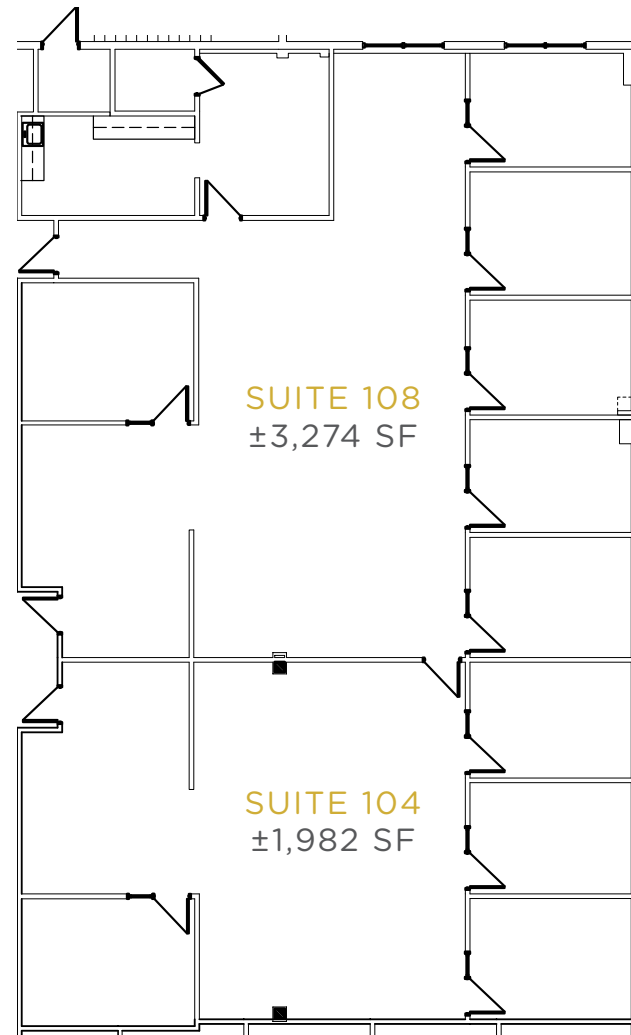
SUITE 104/108

±5,258 RSF (DIVISIBLE TO ±1,982 RSF)

FOR MORE INFORMATION PLEASE CALL

RYAN TIMPANI
Senior Vice President
602 222 5193
ryan.timpani@colliers.com

KYLE CAMPBELL
Senior Associate
602 222 5062
kyle.campbell@colliers.com



This document/email has been prepared by Colliers International for advertising and general information only. Colliers International makes no guarantees, representations or warranties of any kind, expressed or implied, regarding the information including, but not limited to, warranties of content, accuracy and reliability. Any interested party should undertake their own inquiries as to the accuracy of the information. Colliers International excludes unequivocally all inferred or implied terms, conditions and warranties arising out of this document and excludes all liability for loss and damages arising there from. This publication is the copyrighted property of Colliers International and /or its licensor(s). © 2017. All rights reserved. This communication is not intended to cause or induce breach of an existing listing agreement



Whispering Wind

CORPORATE CENTER

FOR LEASE

WHISPERING WIND CORPORATE CENTER

2205 & 2225 W. WHISPERING WIND DRIVE

AVAILABLE

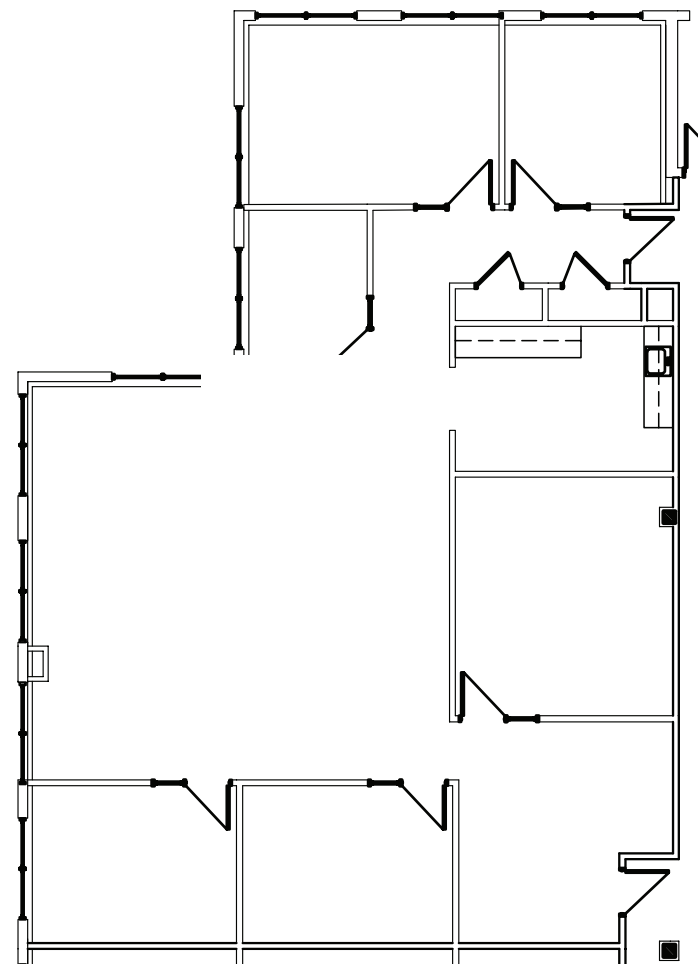
SUITE 107

±2,885 RSF

FOR MORE INFORMATION PLEASE CALL

RYAN TIMPANI
Senior Vice President
602 222 5193
ryan.timpani@colliers.com

KYLE CAMPBELL
Senior Associate
602 222 5062
kyle.campbell@colliers.com



This document/email has been prepared by Colliers International for advertising and general information only. Colliers International makes no guarantees, representations or warranties of any kind, expressed or implied, regarding the information including, but not limited to, warranties of content, accuracy and reliability. Any interested party should undertake their own inquiries as to the accuracy of the information. Colliers International excludes unequivocally all inferred or implied terms, conditions and warranties arising out of this document and excludes all liability for loss and damages arising there from. This publication is the copyrighted property of Colliers International and /or its licensor(s). © 2017. All rights reserved. This communication is not intended to cause or induce breach of an existing listing agreement

