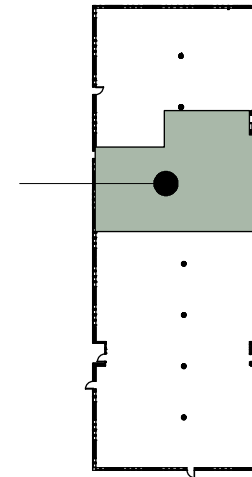
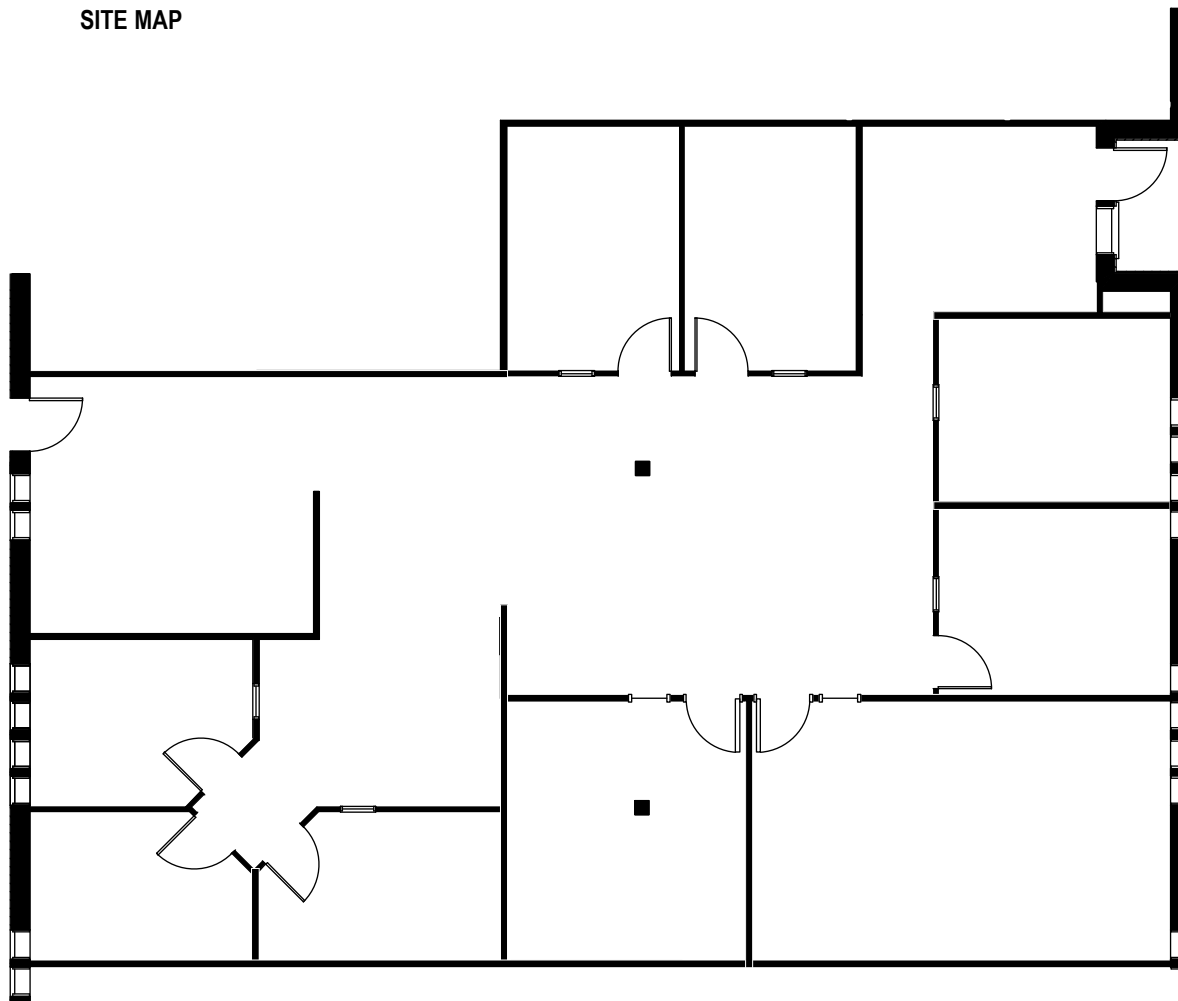


SITE MAP

SUITE FLOOR LOCATION



KEY PLAN - FLOOR 2



Suite 200



Colliers International  
1850 Mount Diablo Boulevard, Suite 200  
Walnut Creek, CA 94596 | United States  
[www.colliers.com](http://www.colliers.com)

LEASING AGENT

**Eric Erickson**  
(925) 279-5580

[eric.erickson@colliers.com](mailto:eric.erickson@colliers.com)

## Pleasant Hill Executive Park

PLEASANT HILL, CA

Owned and Managed by:

Pleasant Hill Executive  
Park  
Associates

approximate area calculations  
subject to verification:

3,150 RSF

**As-built Plan**  
To Be Verified

This information displayed while not guaranteed has been secured by sources we believe to be reliable. This information is subject to errors & omissions. Any tenant should conduct their own investigation.