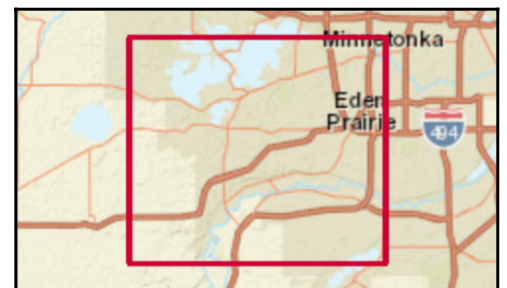
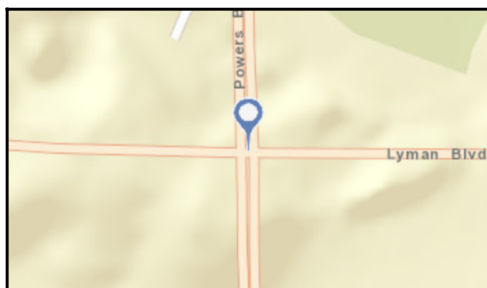
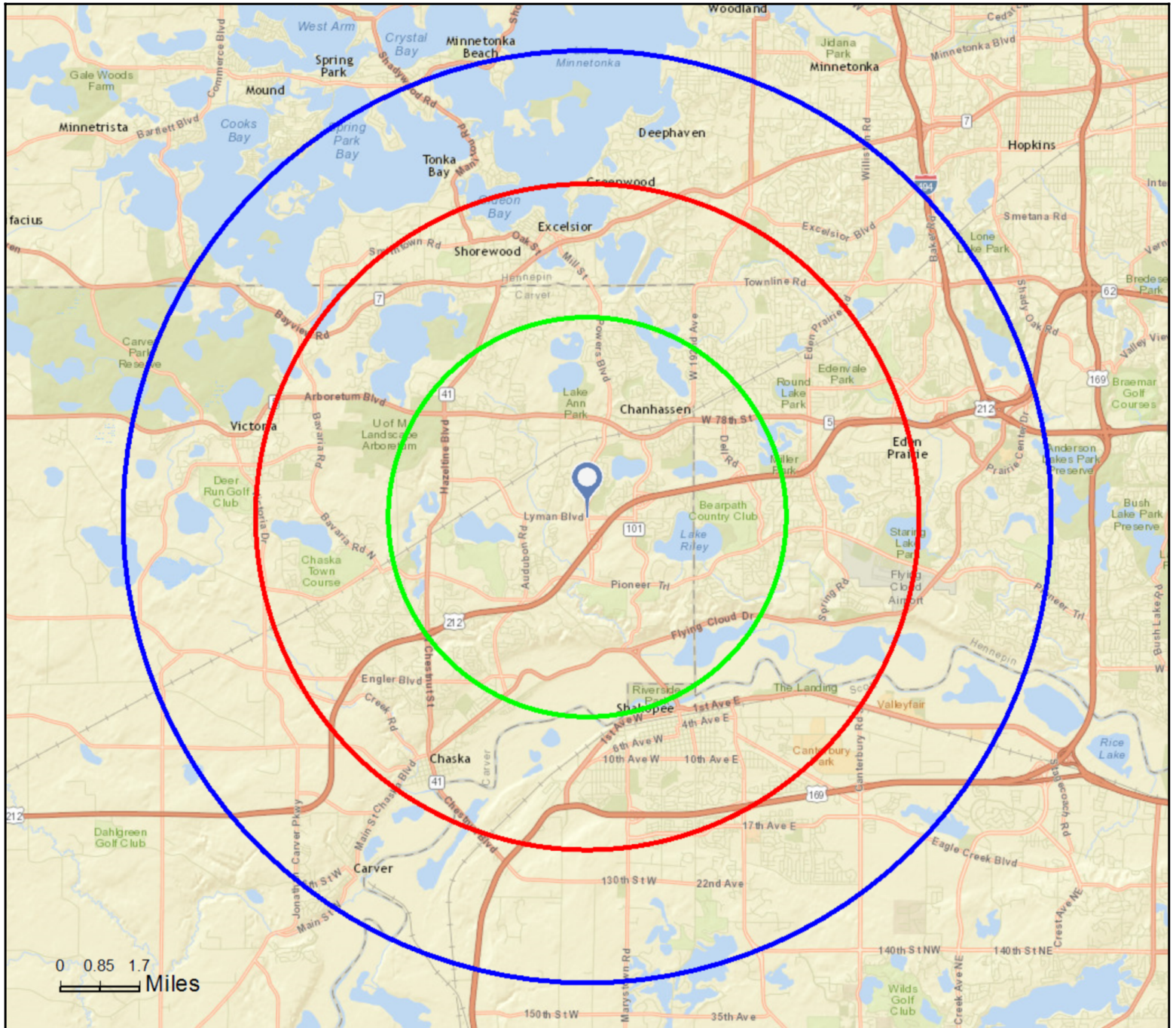


Site Map

Lyman Blvd and Powers Blvd
1200 Lyman Blvd, Chanhassen, Minnesota, 55317
Rings: 3, 5, 7 mile radii

Sam Svendahl
Latitude: 44.84080
Longitude: -93.55330





Executive Summary

Lyman Blvd and Powers Blvd
1200 Lyman Blvd, Chanhassen, Minnesota, 55317
Rings: 3, 5, 7 mile radii

Sam Svendahl
Latitude: 44.84080
Longitude: -93.55330

	3 miles	5 miles	7 miles
Population			
2000 Population	28,376	96,841	147,686
2010 Population	33,446	112,214	175,804
2015 Population	35,227	117,552	184,548
2020 Population	36,675	122,518	193,483
2000-2010 Annual Rate	1.66%	1.48%	1.76%
2010-2015 Annual Rate	0.99%	0.89%	0.93%
2015-2020 Annual Rate	0.81%	0.83%	0.95%
2015 Male Population	49.2%	49.0%	49.0%
2015 Female Population	50.8%	51.0%	51.0%
2015 Median Age	39.2	37.9	38.1

In the identified area, the current year population is 184,548. In 2010, the Census count in the area was 175,804. The rate of change since 2010 was 0.93% annually. The five-year projection for the population in the area is 193,483 representing a change of 0.95% annually from 2015 to 2020. Currently, the population is 49.0% male and 51.0% female.

Median Age

The median age in this area is 39.2, compared to U.S. median age of 37.9.

Race and Ethnicity

2015 White Alone	88.7%	85.9%	84.5%
2015 Black Alone	1.8%	3.2%	3.9%
2015 American Indian/Alaska Native Alone	0.1%	0.4%	0.4%
2015 Asian Alone	6.0%	5.4%	6.5%
2015 Pacific Islander Alone	0.0%	0.0%	0.0%
2015 Other Race	1.4%	2.8%	2.4%
2015 Two or More Races	2.0%	2.2%	2.3%
2015 Hispanic Origin (Any Race)	3.6%	6.0%	5.2%

Persons of Hispanic origin represent 5.2% of the population in the identified area compared to 17.6% of the U.S. population. Persons of Hispanic Origin may be of any race. The Diversity Index, which measures the probability that two people from the same area will be from different race/ethnic groups, is 35.1 in the identified area, compared to 63.0 for the U.S. as a whole.

Households

2000 Households	9,771	34,265	53,713
2010 Households	12,215	41,268	65,929
2015 Total Households	13,013	43,512	69,537
2020 Total Households	13,639	45,487	73,055
2000-2010 Annual Rate	2.26%	1.88%	2.07%
2010-2015 Annual Rate	1.21%	1.01%	1.02%
2015-2020 Annual Rate	0.94%	0.89%	0.99%
2015 Average Household Size	2.70	2.68	2.63

The household count in this area has changed from 65,929 in 2010 to 69,537 in the current year, a change of 1.02% annually. The five-year projection of households is 73,055, a change of 0.99% annually from the current year total. Average household size is currently 2.63, compared to 2.64 in the year 2010. The number of families in the current year is 49,710 in the specified area.

Data Note: Income is expressed in current dollars

Source: U.S. Census Bureau, Census 2010 Summary File 1. Esri forecasts for 2015 and 2020. Esri converted Census 2000 data into 2010 geography.

May 16, 2016



Executive Summary

Lyman Blvd and Powers Blvd
1200 Lyman Blvd, Chanhassen, Minnesota, 55317
Rings: 3, 5, 7 mile radii

Sam Svendahl
Latitude: 44.84080
Longitude: -93.55330

	3 miles	5 miles	7 miles
Median Household Income			
2015 Median Household Income	\$113,640	\$97,209	\$95,804
2020 Median Household Income	\$124,923	\$108,252	\$106,617
2015-2020 Annual Rate	1.91%	2.18%	2.16%
Average Household Income			
2015 Average Household Income	\$147,642	\$126,800	\$125,494
2020 Average Household Income	\$164,428	\$143,342	\$141,671
2015-2020 Annual Rate	2.18%	2.48%	2.45%
Per Capita Income			
2015 Per Capita Income	\$54,688	\$47,085	\$47,337
2020 Per Capita Income	\$61,283	\$53,381	\$53,537
2015-2020 Annual Rate	2.30%	2.54%	2.49%
Households by Income			

Current median household income is \$95,804 in the area, compared to \$53,217 for all U.S. households. Median household income is projected to be \$106,617 in five years, compared to \$60,683 for all U.S. households

Current average household income is \$125,494 in this area, compared to \$74,699 for all U.S. households. Average household income is projected to be \$141,671 in five years, compared to \$84,910 for all U.S. households

Current per capita income is \$47,337 in the area, compared to the U.S. per capita income of \$28,597. The per capita income is projected to be \$53,537 in five years, compared to \$32,501 for all U.S. households

Housing			
2000 Total Housing Units	9,915	35,043	55,171
2000 Owner Occupied Housing Units	8,636	28,280	43,493
2000 Renter Occupied Housing Units	1,136	5,985	10,220
2000 Vacant Housing Units	143	778	1,458
2010 Total Housing Units	12,715	43,119	69,218
2010 Owner Occupied Housing Units	10,364	32,822	51,412
2010 Renter Occupied Housing Units	1,851	8,446	14,517
2010 Vacant Housing Units	500	1,851	3,289
2015 Total Housing Units	13,503	45,350	72,757
2015 Owner Occupied Housing Units	11,042	34,621	54,231
2015 Renter Occupied Housing Units	1,972	8,890	15,306
2015 Vacant Housing Units	490	1,838	3,220
2020 Total Housing Units	14,225	47,478	76,366
2020 Owner Occupied Housing Units	11,546	36,163	56,978
2020 Renter Occupied Housing Units	2,093	9,324	16,077
2020 Vacant Housing Units	586	1,991	3,311

Currently, 74.5% of the 72,757 housing units in the area are owner occupied; 21.0%, renter occupied; and 4.4% are vacant. Currently, in the U.S., 55.7% of the housing units in the area are owner occupied; 32.8% are renter occupied; and 11.6% are vacant. In 2010, there were 69,218 housing units in the area - 74.3% owner occupied, 21.0% renter occupied, and 4.8% vacant. The annual rate of change in housing units since 2010 is 2.24%. Median home value in the area is \$344,521, compared to a median home value of \$200,006 for the U.S. In five years, median value is projected to change by 3.08% annually to \$401,017.

Data Note: Income is expressed in current dollars

Source: U.S. Census Bureau, Census 2010 Summary File 1. Esri forecasts for 2015 and 2020. Esri converted Census 2000 data into 2010 geography.

May 16, 2016



2010 Census Profile

Lyman Blvd and Powers Blvd
1200 Lyman Blvd, Chanhassen, Minnesota, 55317
Ring: 3 mile radius

Sam Svendahl
Latitude: 44.84080
Longitude: -93.55330

	2000	2010	2000-2010 Annual Rate
Population	28,376	33,446	1.66%
Households	9,771	12,215	2.26%
Housing Units	9,915	12,715	2.52%
Population by Race			
Total		33,445	100.0%
Population Reporting One Race		32,879	98.3%
White		30,144	90.1%
Black		482	1.4%
American Indian		46	0.1%
Asian		1,782	5.3%
Pacific Islander		5	0.0%
Some Other Race		420	1.3%
Population Reporting Two or More Races		566	1.7%
Total Hispanic Population		1,089	3.3%
Population by Sex			
Male		16,418	49.1%
Female		17,028	50.9%
Population by Age			
Total		33,443	100.0%
Age 0 - 4		1,998	6.0%
Age 5 - 9		2,779	8.3%
Age 10 - 14		3,273	9.8%
Age 15 - 19		2,703	8.1%
Age 20 - 24		1,185	3.5%
Age 25 - 29		1,584	4.7%
Age 30 - 34		1,770	5.3%
Age 35 - 39		2,151	6.4%
Age 40 - 44		3,060	9.1%
Age 45 - 49		3,738	11.2%
Age 50 - 54		3,123	9.3%
Age 55 - 59		2,265	6.8%
Age 60 - 64		1,407	4.2%
Age 65 - 69		897	2.7%
Age 70 - 74		542	1.6%
Age 75 - 79		378	1.1%
Age 80 - 84		306	0.9%
Age 85+		288	0.9%
Age 18+		23,394	69.9%
Age 65+		2,411	7.2%
Median Age by Sex and Race/Hispanic Origin			
Total Population		38.3	
Male		37.3	
Female		39.3	
White Alone		39.8	
Black Alone		29.6	
American Indian Alone		30.0	
Asian Alone		33.7	
Pacific Islander Alone		30.0	
Some Other Race Alone		25.2	
Two or More Races		13.2	
Hispanic Population		24.4	

Data Note: Hispanic population can be of any race. Census 2010 medians are computed from reported data distributions.

Source: U.S. Census Bureau, Census 2010 Summary File 1. Esri converted Census 2000 data into 2010 geography.



2010 Census Profile

Lyman Blvd and Powers Blvd
1200 Lyman Blvd, Chanhassen, Minnesota, 55317
Ring: 3 mile radius

Sam Svendahl
Latitude: 44.84080
Longitude: -93.55330

Households by Type

Total	12,215	100.0%
Households with 1 Person	2,636	21.6%
Households with 2+ People	9,579	78.4%
Family Households	9,029	73.9%
Husband-wife Families	7,797	63.8%
With Own Children	4,309	35.3%
Other Family (No Spouse Present)	1,231	10.1%
With Own Children	784	6.4%
Nonfamily Households	550	4.5%
All Households with Children	5,214	42.7%
Multigenerational Households	163	1.3%
Unmarried Partner Households	506	4.1%
Male-female	456	3.7%
Same-sex	50	0.4%
Average Household Size	2.74	

Family Households by Size

Total	9,029	100.0%
2 People	3,251	36.0%
3 People	2,057	22.8%
4 People	2,352	26.0%
5 People	1,034	11.5%
6 People	246	2.7%
7+ People	89	1.0%
Average Family Size	3.23	

Nonfamily Households by Size

Total	3,186	100.0%
1 Person	2,636	82.7%
2 People	485	15.2%
3 People	41	1.3%
4 People	17	0.5%
5 People	7	0.2%
6 People	0	0.0%
7+ People	0	0.0%
Average Nonfamily Size	1.22	

Population by Relationship and Household Type

Total	33,446	100.0%
In Households	33,418	99.9%
In Family Households	29,526	88.3%
Householder	9,067	27.1%
Spouse	7,815	23.4%
Child	11,805	35.3%
Other relative	501	1.5%
Nonrelative	338	1.0%
In Nonfamily Households	3,892	11.6%
In Group Quarters	28	0.1%
Institutionalized Population	13	0.0%
Noninstitutionalized Population	15	0.0%

Data Note: Households with children include any households with people under age 18, related or not. Multigenerational households are families with 3 or more parent-child relationships. Unmarried partner households are usually classified as nonfamily households unless there is another member of the household related to the householder. Multigenerational and unmarried partner households are reported only to the tract level. Esri estimated block group data, which is used to estimate polygons or non-standard geography. Average family size excludes nonrelatives.

Source: U.S. Census Bureau, Census 2010 Summary File 1.



2010 Census Profile

Lyman Blvd and Powers Blvd
1200 Lyman Blvd, Chanhassen, Minnesota, 55317
Ring: 3 mile radius

Sam Svendahl
Latitude: 44.84080
Longitude: -93.55330

Family Households by Age of Householder

Total	9,028	100.0%
Householder Age 15 - 44	3,358	37.2%
Householder Age 45 - 54	3,199	35.4%
Householder Age 55 - 64	1,623	18.0%
Householder Age 65 - 74	597	6.6%
Householder Age 75+	251	2.8%

Nonfamily Households by Age of Householder

Total	3,186	100.0%
Householder Age 15 - 44	1,146	36.0%
Householder Age 45 - 54	674	21.2%
Householder Age 55 - 64	619	19.4%
Householder Age 65 - 74	304	9.5%
Householder Age 75+	443	13.9%

Households by Race of Householder

Total	12,215	100.0%
Householder is White Alone	11,336	92.8%
Householder is Black Alone	161	1.3%
Householder is American Indian Alone	14	0.1%
Householder is Asian Alone	507	4.2%
Householder is Pacific Islander Alone	3	0.0%
Householder is Some Other Race Alone	110	0.9%
Householder is Two or More Races	84	0.7%
Households with Hispanic Householder	264	2.2%

Husband-wife Families by Race of Householder

Total	7,797	100.0%
Householder is White Alone	7,203	92.4%
Householder is Black Alone	81	1.0%
Householder is American Indian Alone	9	0.1%
Householder is Asian Alone	394	5.1%
Householder is Pacific Islander Alone	1	0.0%
Householder is Some Other Race Alone	63	0.8%
Householder is Two or More Races	46	0.6%
Husband-wife Families with Hispanic Householder	156	2.0%

Other Families (No Spouse) by Race of Householder

Total	1,231	100.0%
Householder is White Alone	1,082	87.9%
Householder is Black Alone	42	3.4%
Householder is American Indian Alone	2	0.2%
Householder is Asian Alone	56	4.5%
Householder is Pacific Islander Alone	1	0.1%
Householder is Some Other Race Alone	29	2.4%
Householder is Two or More Races	19	1.5%
Other Families with Hispanic Householder	62	5.0%

Nonfamily Households by Race of Householder

Total	3,187	100.0%
Householder is White Alone	3,051	95.7%
Householder is Black Alone	39	1.2%
Householder is American Indian Alone	3	0.1%
Householder is Asian Alone	57	1.8%
Householder is Pacific Islander Alone	0	0.0%
Householder is Some Other Race Alone	18	0.6%
Householder is Two or More Races	19	0.6%
Nonfamily Households with Hispanic Householder	46	1.4%

Source: U.S. Census Bureau, Census 2010 Summary File 1.



2010 Census Profile

Lyman Blvd and Powers Blvd
1200 Lyman Blvd, Chanhassen, Minnesota, 55317
Ring: 3 mile radius

Sam Svendahl
Latitude: 44.84080
Longitude: -93.55330

Total Housing Units by Occupancy

Total	12,724	100.0%
Occupied Housing Units	12,215	96.0%
Vacant Housing Units		
For Rent	126	1.0%
Rented, not Occupied	14	0.1%
For Sale Only	152	1.2%
Sold, not Occupied	34	0.3%
For Seasonal/Recreational/Occasional Use	102	0.8%
For Migrant Workers	1	0.0%
Other Vacant	80	0.6%
Total Vacancy Rate	3.9%	

Households by Tenure and Mortgage Status

Total	12,215	100.0%
Owner Occupied	10,364	84.8%
Owned with a Mortgage/Loan	8,788	71.9%
Owned Free and Clear	1,576	12.9%
Average Household Size	2.84	
Renter Occupied	1,851	15.2%
Average Household Size	2.13	

Owner-occupied Housing Units by Race of Householder

Total	10,363	100.0%
Householder is White Alone	9,708	93.7%
Householder is Black Alone	88	0.8%
Householder is American Indian Alone	8	0.1%
Householder is Asian Alone	439	4.2%
Householder is Pacific Islander Alone	1	0.0%
Householder is Some Other Race Alone	60	0.6%
Householder is Two or More Races	59	0.6%
Owner-occupied Housing Units with Hispanic Householder	149	1.4%

Renter-occupied Housing Units by Race of Householder

Total	1,851	100.0%
Householder is White Alone	1,628	88.0%
Householder is Black Alone	73	3.9%
Householder is American Indian Alone	5	0.3%
Householder is Asian Alone	68	3.7%
Householder is Pacific Islander Alone	2	0.1%
Householder is Some Other Race Alone	50	2.7%
Householder is Two or More Races	25	1.4%
Renter-occupied Housing Units with Hispanic Householder	115	6.2%

Average Household Size by Race/Hispanic Origin of Householder

Householder is White Alone	2.69
Householder is Black Alone	3.08
Householder is American Indian Alone	2.93
Householder is Asian Alone	3.35
Householder is Pacific Islander Alone	3.33
Householder is Some Other Race Alone	3.69
Householder is Two or More Races	3.01
Householder is Hispanic	3.62

Source: U.S. Census Bureau, Census 2010 Summary File 1.



2010 Census Profile

Lyman Blvd and Powers Blvd
1200 Lyman Blvd, Chanhassen, Minnesota, 55317
Ring: 5 mile radius

Sam Svendahl
Latitude: 44.84080
Longitude: -93.55330

	2000	2010	2000-2010 Annual Rate
Population	96,841	112,214	1.48%
Households	34,265	41,268	1.88%
Housing Units	35,043	43,119	2.10%
Population by Race			
Total		112,215	100.0%
Population Reporting One Race		109,987	98.0%
White		98,308	87.6%
Black		2,939	2.6%
American Indian		495	0.4%
Asian		5,389	4.8%
Pacific Islander		27	0.0%
Some Other Race		2,829	2.5%
Population Reporting Two or More Races		2,228	2.0%
Total Hispanic Population		6,138	5.5%
Population by Sex			
Male		55,009	49.0%
Female		57,205	51.0%
Population by Age			
Total		112,215	100.0%
Age 0 - 4		7,721	6.9%
Age 5 - 9		8,890	7.9%
Age 10 - 14		9,553	8.5%
Age 15 - 19		8,335	7.4%
Age 20 - 24		4,872	4.3%
Age 25 - 29		6,600	5.9%
Age 30 - 34		7,018	6.3%
Age 35 - 39		7,662	6.8%
Age 40 - 44		9,263	8.3%
Age 45 - 49		10,981	9.8%
Age 50 - 54		9,726	8.7%
Age 55 - 59		7,578	6.8%
Age 60 - 64		5,058	4.5%
Age 65 - 69		3,138	2.8%
Age 70 - 74		2,134	1.9%
Age 75 - 79		1,511	1.3%
Age 80 - 84		1,185	1.1%
Age 85+		990	0.9%
Age 18+		80,082	71.4%
Age 65+		8,958	8.0%
Median Age by Sex and Race/Hispanic Origin			
Total Population		37.0	
Male		36.0	
Female		38.0	
White Alone		39.0	
Black Alone		24.9	
American Indian Alone		29.9	
Asian Alone		32.5	
Pacific Islander Alone		24.2	
Some Other Race Alone		24.7	
Two or More Races		12.7	
Hispanic Population		23.8	

Data Note: Hispanic population can be of any race. Census 2010 medians are computed from reported data distributions.

Source: U.S. Census Bureau, Census 2010 Summary File 1. Esri converted Census 2000 data into 2010 geography.



2010 Census Profile

Lyman Blvd and Powers Blvd
1200 Lyman Blvd, Chanhassen, Minnesota, 55317
Ring: 5 mile radius

Sam Svendahl
Latitude: 44.84080
Longitude: -93.55330

Households by Type		
Total	41,268	100.0%
Households with 1 Person	9,048	21.9%
Households with 2+ People	32,220	78.1%
Family Households	30,049	72.8%
Husband-wife Families	24,883	60.3%
With Own Children	12,995	31.5%
Other Family (No Spouse Present)	5,166	12.5%
With Own Children	3,245	7.9%
Nonfamily Households	2,171	5.3%
All Households with Children	16,813	40.7%
Multigenerational Households	766	1.9%
Unmarried Partner Households	2,135	5.2%
Male-female	1,933	4.7%
Same-sex	202	0.5%
Average Household Size	2.69	
Family Households by Size		
Total	30,050	100.0%
2 People	11,318	37.7%
3 People	6,889	22.9%
4 People	7,426	24.7%
5 People	3,110	10.3%
6 People	882	2.9%
7+ People	425	1.4%
Average Family Size	3.18	
Nonfamily Households by Size		
Total	11,219	100.0%
1 Person	9,048	80.6%
2 People	1,846	16.5%
3 People	203	1.8%
4 People	81	0.7%
5 People	25	0.2%
6 People	11	0.1%
7+ People	5	0.0%
Average Nonfamily Size	1.24	
Population by Relationship and Household Type		
Total	112,214	100.0%
In Households	111,163	99.1%
In Family Households	97,249	86.7%
Householder	30,088	26.8%
Spouse	24,921	22.2%
Child	38,409	34.2%
Other relative	2,178	1.9%
Nonrelative	1,652	1.5%
In Nonfamily Households	13,913	12.4%
In Group Quarters	1,051	0.9%
Institutionalized Population	913	0.8%
Noninstitutionalized Population	138	0.1%

Data Note: **Households with children** include any households with people under age 18, related or not. **Multigenerational households** are families with 3 or more parent-child relationships. **Unmarried partner households** are usually classified as nonfamily households unless there is another member of the household related to the householder. Multigenerational and unmarried partner households are reported only to the tract level. Esri estimated block group data, which is used to estimate polygons or non-standard geography. **Average family size** excludes nonrelatives.

Source: U.S. Census Bureau, Census 2010 Summary File 1.



2010 Census Profile

Lyman Blvd and Powers Blvd
1200 Lyman Blvd, Chanhassen, Minnesota, 55317
Ring: 5 mile radius

Sam Svendahl
Latitude: 44.84080
Longitude: -93.55330

Family Households by Age of Householder		
Total	30,049	100.0%
Householder Age 15 - 44	12,070	40.2%
Householder Age 45 - 54	9,382	31.2%
Householder Age 55 - 64	5,406	18.0%
Householder Age 65 - 74	2,106	7.0%
Householder Age 75+	1,085	3.6%
Nonfamily Households by Age of Householder		
Total	11,219	100.0%
Householder Age 15 - 44	4,121	36.7%
Householder Age 45 - 54	2,277	20.3%
Householder Age 55 - 64	2,188	19.5%
Householder Age 65 - 74	1,182	10.5%
Householder Age 75+	1,451	12.9%
Households by Race of Householder		
Total	41,269	100.0%
Householder is White Alone	37,694	91.3%
Householder is Black Alone	827	2.0%
Householder is American Indian Alone	138	0.3%
Householder is Asian Alone	1,544	3.7%
Householder is Pacific Islander Alone	8	0.0%
Householder is Some Other Race Alone	707	1.7%
Householder is Two or More Races	351	0.9%
Households with Hispanic Householder	1,457	3.5%
Husband-wife Families by Race of Householder		
Total	24,882	100.0%
Householder is White Alone	22,828	91.7%
Householder is Black Alone	348	1.4%
Householder is American Indian Alone	55	0.2%
Householder is Asian Alone	1,110	4.5%
Householder is Pacific Islander Alone	4	0.0%
Householder is Some Other Race Alone	361	1.5%
Householder is Two or More Races	176	0.7%
Husband-wife Families with Hispanic Householder	776	3.1%
Other Families (No Spouse) by Race of Householder		
Total	5,166	100.0%
Householder is White Alone	4,271	82.7%
Householder is Black Alone	299	5.8%
Householder is American Indian Alone	45	0.9%
Householder is Asian Alone	220	4.3%
Householder is Pacific Islander Alone	3	0.1%
Householder is Some Other Race Alone	245	4.7%
Householder is Two or More Races	83	1.6%
Other Families with Hispanic Householder	455	8.8%
Nonfamily Households by Race of Householder		
Total	11,219	100.0%
Householder is White Alone	10,594	94.4%
Householder is Black Alone	180	1.6%
Householder is American Indian Alone	38	0.3%
Householder is Asian Alone	214	1.9%
Householder is Pacific Islander Alone	0	0.0%
Householder is Some Other Race Alone	101	0.9%
Householder is Two or More Races	92	0.8%
Nonfamily Households with Hispanic Householder	226	2.0%

Source: U.S. Census Bureau, Census 2010 Summary File 1.



2010 Census Profile

Lyman Blvd and Powers Blvd
1200 Lyman Blvd, Chanhassen, Minnesota, 55317
Ring: 5 mile radius

Sam Svendahl
Latitude: 44.84080
Longitude: -93.55330

Total Housing Units by Occupancy

Total	43,129	100.0%
Occupied Housing Units	41,268	95.7%
Vacant Housing Units		
For Rent	638	1.5%
Rented, not Occupied	97	0.2%
For Sale Only	432	1.0%
Sold, not Occupied	88	0.2%
For Seasonal/Recreational/Occasional Use	337	0.8%
For Migrant Workers	1	0.0%
Other Vacant	268	0.6%
Total Vacancy Rate	4.3%	

Households by Tenure and Mortgage Status

Total	41,268	100.0%
Owner Occupied	32,822	79.5%
Owned with a Mortgage/Loan	27,534	66.7%
Owned Free and Clear	5,288	12.8%
Average Household Size	2.80	
Renter Occupied	8,446	20.5%
Average Household Size	2.27	

Owner-occupied Housing Units by Race of Householder

Total	32,823	100.0%
Householder is White Alone	30,713	93.6%
Householder is Black Alone	298	0.9%
Householder is American Indian Alone	51	0.2%
Householder is Asian Alone	1,248	3.8%
Householder is Pacific Islander Alone	2	0.0%
Householder is Some Other Race Alone	298	0.9%
Householder is Two or More Races	213	0.6%
Owner-occupied Housing Units with Hispanic Householder	694	2.1%

Renter-occupied Housing Units by Race of Householder

Total	8,445	100.0%
Householder is White Alone	6,981	82.7%
Householder is Black Alone	528	6.3%
Householder is American Indian Alone	87	1.0%
Householder is Asian Alone	296	3.5%
Householder is Pacific Islander Alone	6	0.1%
Householder is Some Other Race Alone	409	4.8%
Householder is Two or More Races	138	1.6%
Renter-occupied Housing Units with Hispanic Householder	763	9.0%

Average Household Size by Race/Hispanic Origin of Householder

Householder is White Alone	2.63
Householder is Black Alone	3.27
Householder is American Indian Alone	3.04
Householder is Asian Alone	3.29
Householder is Pacific Islander Alone	3.50
Householder is Some Other Race Alone	3.83
Householder is Two or More Races	3.14
Householder is Hispanic	3.74

Source: U.S. Census Bureau, Census 2010 Summary File 1.



2010 Census Profile

Lyman Blvd and Powers Blvd
1200 Lyman Blvd, Chanhassen, Minnesota, 55317
Ring: 7 mile radius

Sam Svendahl
Latitude: 44.84080
Longitude: -93.55330

	2000	2010	2000-2010 Annual Rate
Population	147,686	175,804	1.76%
Households	53,713	65,929	2.07%
Housing Units	55,171	69,218	2.29%
Population by Race			
Total		175,805	100.0%
Population Reporting One Race		172,162	97.9%
White		151,621	86.2%
Black		5,820	3.3%
American Indian		697	0.4%
Asian		10,210	5.8%
Pacific Islander		46	0.0%
Some Other Race		3,768	2.1%
Population Reporting Two or More Races		3,643	2.1%
Total Hispanic Population		8,296	4.7%
Population by Sex			
Male		86,095	49.0%
Female		89,709	51.0%
Population by Age			
Total		175,804	100.0%
Age 0 - 4		12,316	7.0%
Age 5 - 9		13,793	7.8%
Age 10 - 14		14,257	8.1%
Age 15 - 19		12,353	7.0%
Age 20 - 24		7,640	4.3%
Age 25 - 29		10,946	6.2%
Age 30 - 34		11,473	6.5%
Age 35 - 39		12,125	6.9%
Age 40 - 44		13,989	8.0%
Age 45 - 49		16,196	9.2%
Age 50 - 54		14,736	8.4%
Age 55 - 59		11,855	6.7%
Age 60 - 64		8,441	4.8%
Age 65 - 69		5,228	3.0%
Age 70 - 74		3,596	2.0%
Age 75 - 79		2,571	1.5%
Age 80 - 84		2,109	1.2%
Age 85+		2,179	1.2%
Age 18+		126,585	72.0%
Age 65+		15,683	8.9%
Median Age by Sex and Race/Hispanic Origin			
Total Population		37.1	
Male		36.1	
Female		38.0	
White Alone		39.6	
Black Alone		24.1	
American Indian Alone		29.1	
Asian Alone		31.5	
Pacific Islander Alone		22.5	
Some Other Race Alone		24.9	
Two or More Races		13.1	
Hispanic Population		24.1	

Data Note: Hispanic population can be of any race. Census 2010 medians are computed from reported data distributions.

Source: U.S. Census Bureau, Census 2010 Summary File 1. Esri converted Census 2000 data into 2010 geography.



2010 Census Profile

Lyman Blvd and Powers Blvd
1200 Lyman Blvd, Chanhassen, Minnesota, 55317
Ring: 7 mile radius

Sam Svendahl
Latitude: 44.84080
Longitude: -93.55330

Households by Type

Total	65,928	100.0%
Households with 1 Person	15,001	22.8%
Households with 2+ People	50,927	77.2%
Family Households	47,290	71.7%
Husband-wife Families	39,459	59.9%
With Own Children	20,088	30.5%
Other Family (No Spouse Present)	7,832	11.9%
With Own Children	4,870	7.4%
Nonfamily Households	3,637	5.5%
All Households with Children	25,840	39.2%
Multigenerational Households	1,187	1.8%
Unmarried Partner Households	3,359	5.1%
Male-female	3,033	4.6%
Same-sex	326	0.5%
Average Household Size	2.64	

Family Households by Size

Total	47,289	100.0%
2 People	18,500	39.1%
3 People	10,728	22.7%
4 People	11,383	24.1%
5 People	4,622	9.8%
6 People	1,387	2.9%
7+ People	669	1.4%
Average Family Size	3.14	

Nonfamily Households by Size

Total	18,639	100.0%
1 Person	15,001	80.5%
2 People	3,116	16.7%
3 People	337	1.8%
4 People	128	0.7%
5 People	35	0.2%
6 People	14	0.1%
7+ People	8	0.0%
Average Nonfamily Size	1.24	

Population by Relationship and Household Type

Total	175,804	100.0%
In Households	174,235	99.1%
In Family Households	151,139	86.0%
Householder	47,241	26.9%
Spouse	39,416	22.4%
Child	58,542	33.3%
Other relative	3,506	2.0%
Nonrelative	2,436	1.4%
In Nonfamily Households	23,096	13.1%
In Group Quarters	1,569	0.9%
Institutionalized Population	1,263	0.7%
Noninstitutionalized Population	307	0.2%

Data Note: Households with children include any households with people under age 18, related or not. Multigenerational households are families with 3 or more parent-child relationships. Unmarried partner households are usually classified as nonfamily households unless there is another member of the household related to the householder. Multigenerational and unmarried partner households are reported only to the tract level. Esri estimated block group data, which is used to estimate polygons or non-standard geography. Average family size excludes nonrelatives.

Source: U.S. Census Bureau, Census 2010 Summary File 1.



2010 Census Profile

Lyman Blvd and Powers Blvd
1200 Lyman Blvd, Chanhassen, Minnesota, 55317
Ring: 7 mile radius

Sam Svendahl
Latitude: 44.84080
Longitude: -93.55330

Family Households by Age of Householder

Total	47,290	100.0%
Householder Age 15 - 44	19,136	40.5%
Householder Age 45 - 54	13,954	29.5%
Householder Age 55 - 64	8,651	18.3%
Householder Age 65 - 74	3,560	7.5%
Householder Age 75+	1,989	4.2%

Nonfamily Households by Age of Householder

Total	18,640	100.0%
Householder Age 15 - 44	7,121	38.2%
Householder Age 45 - 54	3,504	18.8%
Householder Age 55 - 64	3,444	18.5%
Householder Age 65 - 74	1,895	10.2%
Householder Age 75+	2,676	14.4%

Households by Race of Householder

Total	65,930	100.0%
Householder is White Alone	59,383	90.1%
Householder is Black Alone	1,716	2.6%
Householder is American Indian Alone	199	0.3%
Householder is Asian Alone	3,083	4.7%
Householder is Pacific Islander Alone	13	0.0%
Householder is Some Other Race Alone	933	1.4%
Householder is Two or More Races	603	0.9%
Households with Hispanic Householder	1,998	3.0%

Husband-wife Families by Race of Householder

Total	39,458	100.0%
Householder is White Alone	35,700	90.5%
Householder is Black Alone	683	1.7%
Householder is American Indian Alone	84	0.2%
Householder is Asian Alone	2,205	5.6%
Householder is Pacific Islander Alone	5	0.0%
Householder is Some Other Race Alone	475	1.2%
Householder is Two or More Races	306	0.8%
Husband-wife Families with Hispanic Householder	1,063	2.7%

Other Families (No Spouse) by Race of Householder

Total	7,831	100.0%
Householder is White Alone	6,306	80.5%
Householder is Black Alone	635	8.1%
Householder is American Indian Alone	63	0.8%
Householder is Asian Alone	369	4.7%
Householder is Pacific Islander Alone	7	0.1%
Householder is Some Other Race Alone	318	4.1%
Householder is Two or More Races	133	1.7%
Other Families with Hispanic Householder	602	7.7%

Nonfamily Households by Race of Householder

Total	18,638	100.0%
Householder is White Alone	17,376	93.2%
Householder is Black Alone	397	2.1%
Householder is American Indian Alone	51	0.3%
Householder is Asian Alone	509	2.7%
Householder is Pacific Islander Alone	1	0.0%
Householder is Some Other Race Alone	140	0.8%
Householder is Two or More Races	164	0.9%
Nonfamily Households with Hispanic Householder	332	1.8%

Source: U.S. Census Bureau, Census 2010 Summary File 1.



2010 Census Profile

Lyman Blvd and Powers Blvd
1200 Lyman Blvd, Chanhassen, Minnesota, 55317
Ring: 7 mile radius

Sam Svendahl
Latitude: 44.84080
Longitude: -93.55330

Total Housing Units by Occupancy

Total	69,182	100.0%
Occupied Housing Units	65,929	95.3%
Vacant Housing Units		
For Rent	1,083	1.6%
Rented, not Occupied	139	0.2%
For Sale Only	724	1.0%
Sold, not Occupied	148	0.2%
For Seasonal/Recreational/Occasional Use	711	1.0%
For Migrant Workers	1	0.0%
Other Vacant	447	0.6%
Total Vacancy Rate	4.8%	

Households by Tenure and Mortgage Status

Total	65,929	100.0%
Owner Occupied	51,412	78.0%
Owned with a Mortgage/Loan	42,689	64.7%
Owned Free and Clear	8,723	13.2%
Average Household Size	2.76	
Renter Occupied	14,517	22.0%
Average Household Size	2.22	

Owner-occupied Housing Units by Race of Householder

Total	51,411	100.0%
Householder is White Alone	48,010	93.4%
Householder is Black Alone	518	1.0%
Householder is American Indian Alone	84	0.2%
Householder is Asian Alone	2,042	4.0%
Householder is Pacific Islander Alone	4	0.0%
Householder is Some Other Race Alone	399	0.8%
Householder is Two or More Races	354	0.7%
Owner-occupied Housing Units with Hispanic Householder	974	1.9%

Renter-occupied Housing Units by Race of Householder

Total	14,516	100.0%
Householder is White Alone	11,372	78.3%
Householder is Black Alone	1,198	8.3%
Householder is American Indian Alone	114	0.8%
Householder is Asian Alone	1,040	7.2%
Householder is Pacific Islander Alone	9	0.1%
Householder is Some Other Race Alone	535	3.7%
Householder is Two or More Races	248	1.7%
Renter-occupied Housing Units with Hispanic Householder	1,024	7.1%

Average Household Size by Race/Hispanic Origin of Householder

Householder is White Alone	2.58
Householder is Black Alone	3.23
Householder is American Indian Alone	3.04
Householder is Asian Alone	3.17
Householder is Pacific Islander Alone	3.15
Householder is Some Other Race Alone	3.80
Householder is Two or More Races	3.02
Householder is Hispanic	3.66

Source: U.S. Census Bureau, Census 2010 Summary File 1.



Demographic and Income Profile

Lyman Blvd and Powers Blvd
1200 Lyman Blvd, Chanhassen, Minnesota, 55317
Ring: 3 mile radius

Sam Svendahl
Latitude: 44.84080
Longitude: -93.55330

Summary	Census 2010	2015	2020				
Population	33,446	35,227	36,675				
Households	12,215	13,013	13,639				
Families	9,029	9,576	10,023				
Average Household Size	2.74	2.70	2.69				
Owner Occupied Housing Units	10,364	11,042	11,546				
Renter Occupied Housing Units	1,851	1,972	2,093				
Median Age	38.3	39.2	40.3				
Trends: 2015 - 2020 Annual Rate	Area	State	National				
Population	0.81%	0.67%	0.75%				
Households	0.94%	0.73%	0.77%				
Families	0.92%	0.65%	0.69%				
Owner HHs	0.90%	0.71%	0.70%				
Median Household Income	1.91%	3.18%	2.66%				
Households by Income	2015		2020				
	Number	Percent	Number	Percent			
	<\$15,000	277	2.1%	233	1.7%		
	\$15,000 - \$24,999	350	2.7%	233	1.7%		
	\$25,000 - \$34,999	430	3.3%	313	2.3%		
	\$35,000 - \$49,999	713	5.5%	567	4.2%		
	\$50,000 - \$74,999	1,820	14.0%	1,577	11.6%		
	\$75,000 - \$99,999	1,867	14.3%	1,970	14.4%		
	\$100,000 - \$149,999	2,852	21.9%	3,188	23.4%		
	\$150,000 - \$199,999	1,999	15.4%	2,292	16.8%		
	\$200,000+	2,704	20.8%	3,266	23.9%		
Median Household Income	\$113,640		\$124,923				
Average Household Income	\$147,642		\$164,428				
Per Capita Income	\$54,688		\$61,283				
Population by Age	Census 2010		2015		2020		
	Number	Percent	Number	Percent	Number	Percent	
	0 - 4	1,998	6.0%	1,908	5.4%	1,947	5.3%
	5 - 9	2,779	8.3%	2,454	7.0%	2,331	6.4%
	10 - 14	3,273	9.8%	3,089	8.8%	3,007	8.2%
	15 - 19	2,703	8.1%	2,859	8.1%	2,782	7.6%
	20 - 24	1,185	3.5%	1,932	5.5%	1,731	4.7%
	25 - 34	3,354	10.0%	3,505	9.9%	3,767	10.3%
	35 - 44	5,211	15.6%	4,642	13.2%	5,207	14.2%
	45 - 54	6,861	20.5%	6,679	19.0%	5,777	15.8%
	55 - 64	3,672	11.0%	4,991	14.2%	5,748	15.7%
	65 - 74	1,439	4.3%	2,114	6.0%	3,033	8.3%
	75 - 84	684	2.0%	729	2.1%	1,007	2.7%
	85+	288	0.9%	325	0.9%	337	0.9%
Race and Ethnicity	Census 2010		2015		2020		
	Number	Percent	Number	Percent	Number	Percent	
	White Alone	30,144	90.1%	31,253	88.7%	31,812	86.7%
	Black Alone	482	1.4%	627	1.8%	825	2.2%
	American Indian Alone	46	0.1%	46	0.1%	51	0.1%
	Asian Alone	1,782	5.3%	2,114	6.0%	2,560	7.0%
	Pacific Islander Alone	5	0.0%	7	0.0%	7	0.0%
	Some Other Race Alone	420	1.3%	491	1.4%	580	1.6%
	Two or More Races	566	1.7%	689	2.0%	841	2.3%
	Hispanic Origin (Any Race)	1,089	3.3%	1,264	3.6%	1,486	4.1%

Data Note: Income is expressed in current dollars.

Source: U.S. Census Bureau, Census 2010 Summary File 1. Esri forecasts for 2015 and 2020.

May 16, 2016

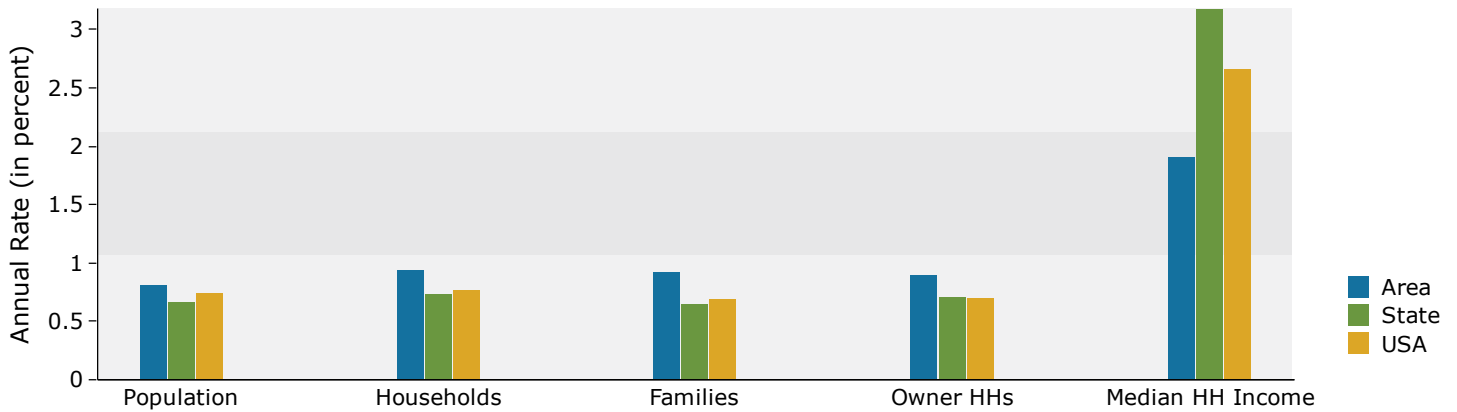


Demographic and Income Profile

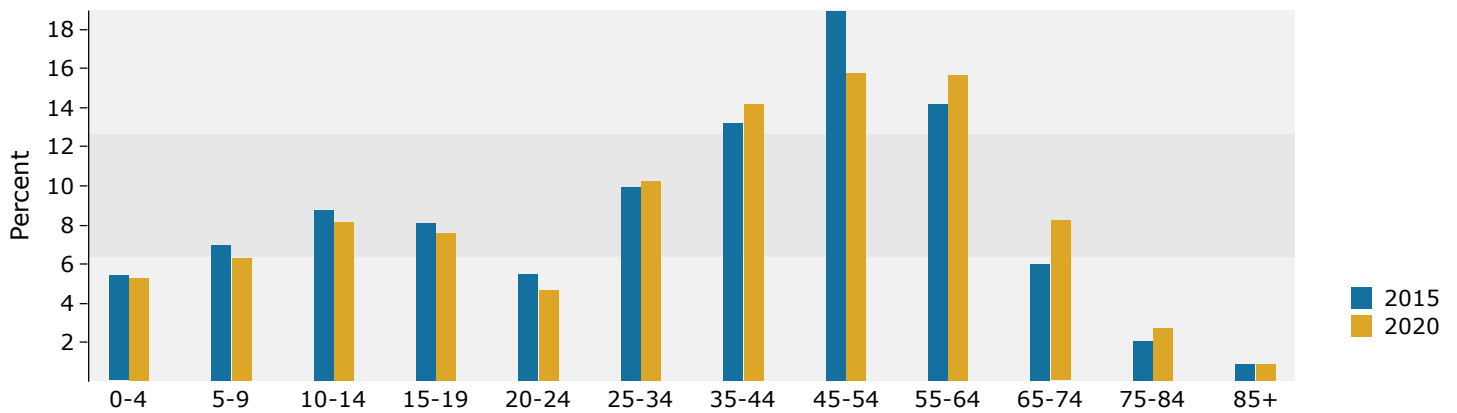
Lyman Blvd and Powers Blvd
1200 Lyman Blvd, Chanhassen, Minnesota, 55317
Ring: 3 mile radius

Sam Svendahl
Latitude: 44.84080
Longitude: -93.55330

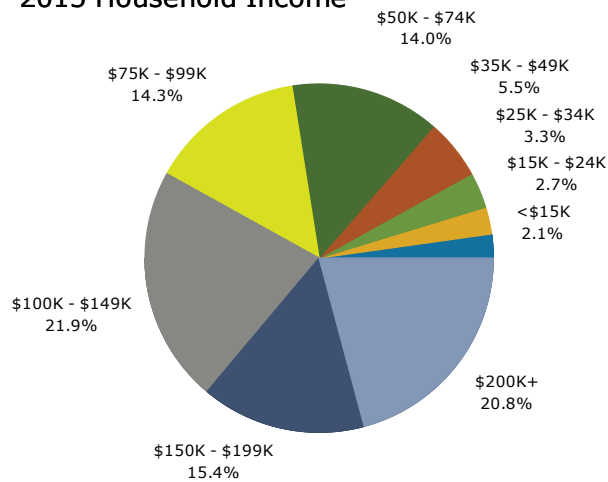
Trends 2015-2020



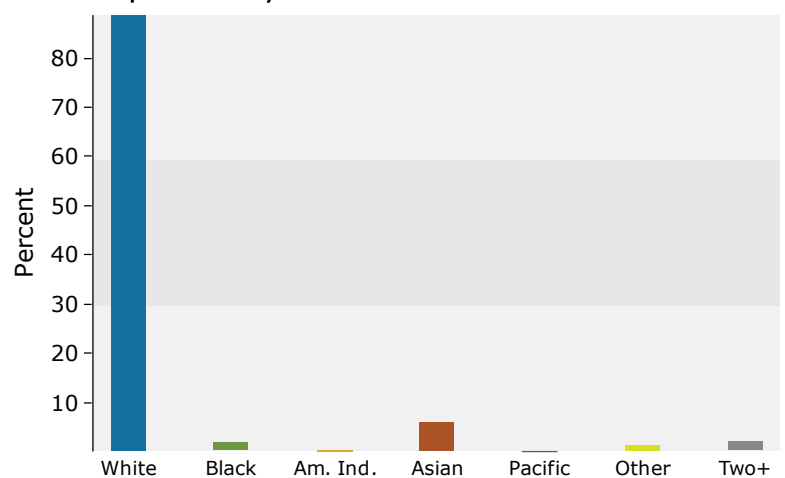
Population by Age



2015 Household Income



2015 Population by Race



2015 Percent Hispanic Origin: 3.6%

Source: U.S. Census Bureau, Census 2010 Summary File 1. Esri forecasts for 2015 and 2020.

May 16, 2016



Demographic and Income Profile

Lyman Blvd and Powers Blvd
1200 Lyman Blvd, Chanhassen, Minnesota, 55317
Ring: 5 mile radius

Sam Svendahl
Latitude: 44.84080
Longitude: -93.55330

Summary	Census 2010		2015		2020	
Population	112,214		117,552		122,518	
Households	41,268		43,512		45,487	
Families	30,049		31,543		32,904	
Average Household Size	2.69		2.68		2.67	
Owner Occupied Housing Units	32,822		34,621		36,163	
Renter Occupied Housing Units	8,446		8,890		9,324	
Median Age	37.0		37.9		38.9	
Trends: 2015 - 2020 Annual Rate	Area		State		National	
Population	0.83%		0.67%		0.75%	
Households	0.89%		0.73%		0.77%	
Families	0.85%		0.65%		0.69%	
Owner HHs	0.88%		0.71%		0.70%	
Median Household Income	2.18%		3.18%		2.66%	
Households by Income	2015		2020			
	Number	Percent	Number	Percent		
<\$15,000	1,530	3.5%	1,333	2.9%		
\$15,000 - \$24,999	1,829	4.2%	1,291	2.8%		
\$25,000 - \$34,999	2,154	5.0%	1,655	3.6%		
\$35,000 - \$49,999	3,440	7.9%	2,937	6.5%		
\$50,000 - \$74,999	7,098	16.3%	6,506	14.3%		
\$75,000 - \$99,999	6,251	14.4%	6,647	14.6%		
\$100,000 - \$149,999	8,695	20.0%	10,002	22.0%		
\$150,000 - \$199,999	5,741	13.2%	6,746	14.8%		
\$200,000+	6,774	15.6%	8,370	18.4%		
Median Household Income	\$97,209		\$108,252			
Average Household Income	\$126,800		\$143,342			
Per Capita Income	\$47,085		\$53,381			
Population by Age	Census 2010		2015		2020	
	Number	Percent	Number	Percent	Number	Percent
0 - 4	7,721	6.9%	7,351	6.3%	7,562	6.2%
5 - 9	8,890	7.9%	8,652	7.4%	8,273	6.8%
10 - 14	9,553	8.5%	9,498	8.1%	9,639	7.9%
15 - 19	8,335	7.4%	8,474	7.2%	8,403	6.9%
20 - 24	4,872	4.3%	6,681	5.7%	6,039	4.9%
25 - 34	13,618	12.1%	13,560	11.5%	14,251	11.6%
35 - 44	16,925	15.1%	15,980	13.6%	17,872	14.6%
45 - 54	20,707	18.5%	19,682	16.7%	17,233	14.1%
55 - 64	12,636	11.3%	16,209	13.8%	17,845	14.6%
65 - 74	5,272	4.7%	7,344	6.2%	10,294	8.4%
75 - 84	2,696	2.4%	2,965	2.5%	3,842	3.1%
85+	990	0.9%	1,156	1.0%	1,265	1.0%
Race and Ethnicity	Census 2010		2015		2020	
	Number	Percent	Number	Percent	Number	Percent
White Alone	98,308	87.6%	100,928	85.9%	102,385	83.6%
Black Alone	2,939	2.6%	3,803	3.2%	4,932	4.0%
American Indian Alone	495	0.4%	520	0.4%	557	0.5%
Asian Alone	5,389	4.8%	6,318	5.4%	7,507	6.1%
Pacific Islander Alone	27	0.0%	34	0.0%	39	0.0%
Some Other Race Alone	2,829	2.5%	3,306	2.8%	3,939	3.2%
Two or More Races	2,228	2.0%	2,643	2.2%	3,158	2.6%
Hispanic Origin (Any Race)	6,138	5.5%	7,073	6.0%	8,304	6.8%

Data Note: Income is expressed in current dollars.

Source: U.S. Census Bureau, Census 2010 Summary File 1. Esri forecasts for 2015 and 2020.

May 16, 2016

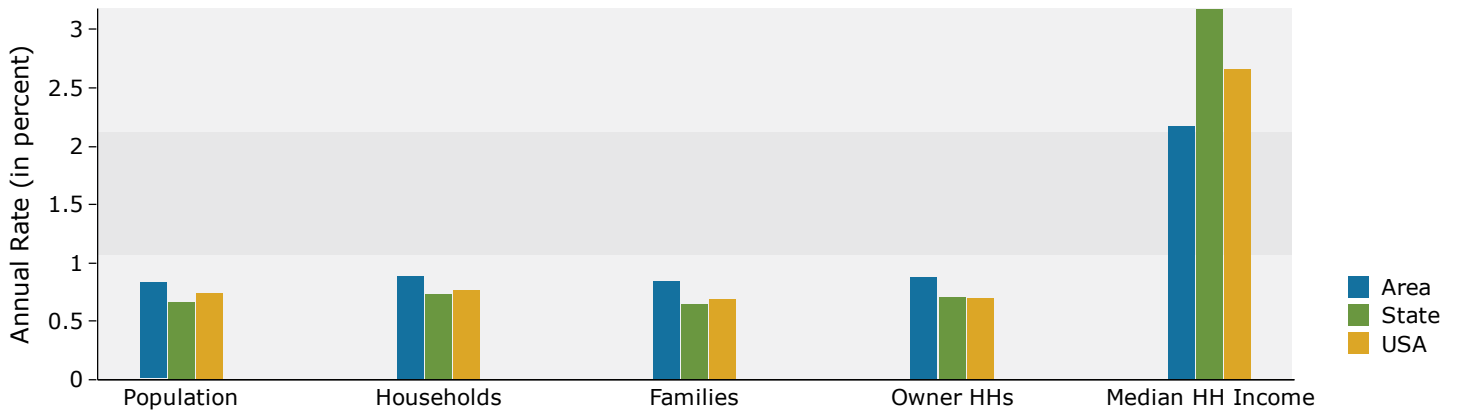


Demographic and Income Profile

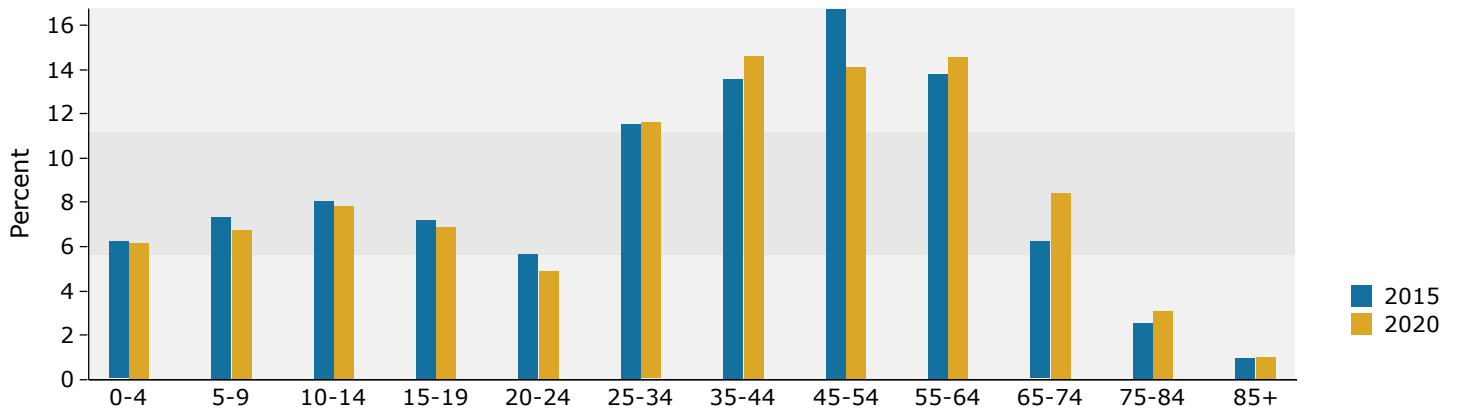
Lyman Blvd and Powers Blvd
1200 Lyman Blvd, Chanhassen, Minnesota, 55317
Ring: 5 mile radius

Sam Svendahl
Latitude: 44.84080
Longitude: -93.55330

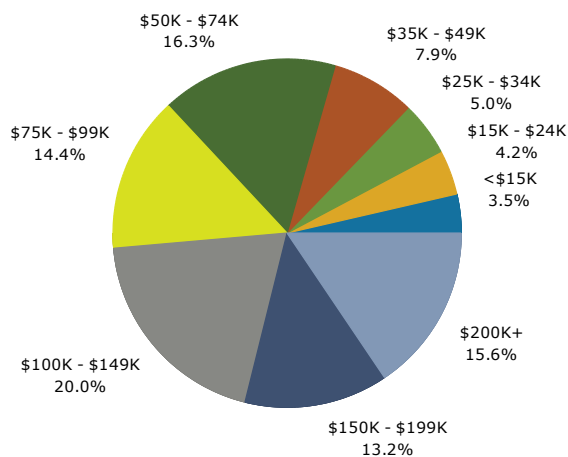
Trends 2015-2020



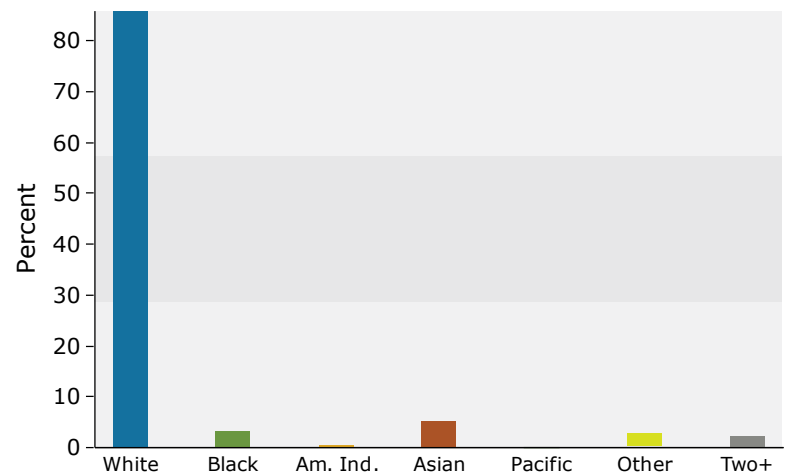
Population by Age



2015 Household Income



2015 Population by Race



2015 Percent Hispanic Origin: 6.0%

Source: U.S. Census Bureau, Census 2010 Summary File 1. Esri forecasts for 2015 and 2020.

May 16, 2016



Demographic and Income Profile

Lyman Blvd and Powers Blvd
1200 Lyman Blvd, Chanhassen, Minnesota, 55317
Ring: 7 mile radius

Sam Svendahl
Latitude: 44.84080
Longitude: -93.55330

Summary	Census 2010		2015		2020	
Population	175,804		184,548		193,483	
Households	65,929		69,537		73,055	
Families	47,290		49,710		52,144	
Average Household Size	2.64		2.63		2.63	
Owner Occupied Housing Units	51,412		54,231		56,978	
Renter Occupied Housing Units	14,517		15,306		16,077	
Median Age	37.1		38.1		38.8	
Trends: 2015 - 2020 Annual Rate	Area		State		National	
Population	0.95%		0.67%		0.75%	
Households	0.99%		0.73%		0.77%	
Families	0.96%		0.65%		0.69%	
Owner HHs	0.99%		0.71%		0.70%	
Median Household Income	2.16%		3.18%		2.66%	
Households by Income	2015		2020			
	Number	Percent	Number	Percent		
<\$15,000	2,535	3.6%	2,204	3.0%		
\$15,000 - \$24,999	2,831	4.1%	1,982	2.7%		
\$25,000 - \$34,999	3,553	5.1%	2,724	3.7%		
\$35,000 - \$49,999	5,840	8.4%	5,056	6.9%		
\$50,000 - \$74,999	11,430	16.4%	10,742	14.7%		
\$75,000 - \$99,999	9,897	14.2%	10,664	14.6%		
\$100,000 - \$149,999	14,104	20.3%	16,191	22.2%		
\$150,000 - \$199,999	8,609	12.4%	10,367	14.2%		
\$200,000+	10,739	15.4%	13,124	18.0%		
Median Household Income	\$95,804		\$106,617			
Average Household Income	\$125,494		\$141,671			
Per Capita Income	\$47,337		\$53,537			
Population by Age	Census 2010		2015		2020	
	Number	Percent	Number	Percent	Number	Percent
0 - 4	12,316	7.0%	11,744	6.4%	12,157	6.3%
5 - 9	13,793	7.8%	13,676	7.4%	13,212	6.8%
10 - 14	14,257	8.1%	14,794	8.0%	15,062	7.8%
15 - 19	12,353	7.0%	12,844	7.0%	13,191	6.8%
20 - 24	7,640	4.3%	10,151	5.5%	9,741	5.0%
25 - 34	22,419	12.8%	21,466	11.6%	22,323	11.5%
35 - 44	26,114	14.9%	25,289	13.7%	28,014	14.5%
45 - 54	30,932	17.6%	29,657	16.1%	26,674	13.8%
55 - 64	20,296	11.5%	25,100	13.6%	27,260	14.1%
65 - 74	8,824	5.0%	12,354	6.7%	16,806	8.7%
75 - 84	4,680	2.7%	5,070	2.7%	6,495	3.4%
85+	2,179	1.2%	2,402	1.3%	2,548	1.3%
Race and Ethnicity	Census 2010		2015		2020	
	Number	Percent	Number	Percent	Number	Percent
White Alone	151,621	86.2%	155,935	84.5%	159,110	82.2%
Black Alone	5,820	3.3%	7,197	3.9%	9,045	4.7%
American Indian Alone	697	0.4%	735	0.4%	799	0.4%
Asian Alone	10,210	5.8%	11,955	6.5%	14,104	7.3%
Pacific Islander Alone	46	0.0%	57	0.0%	64	0.0%
Some Other Race Alone	3,768	2.1%	4,366	2.4%	5,231	2.7%
Two or More Races	3,643	2.1%	4,303	2.3%	5,130	2.7%
Hispanic Origin (Any Race)	8,296	4.7%	9,520	5.2%	11,251	5.8%

Data Note: Income is expressed in current dollars.

Source: U.S. Census Bureau, Census 2010 Summary File 1. Esri forecasts for 2015 and 2020.

May 16, 2016

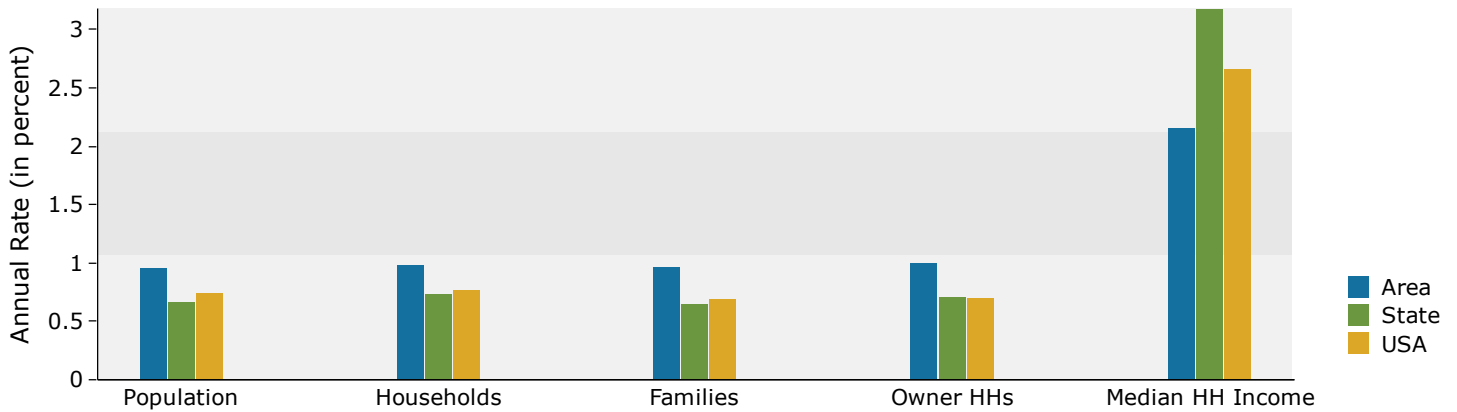


Demographic and Income Profile

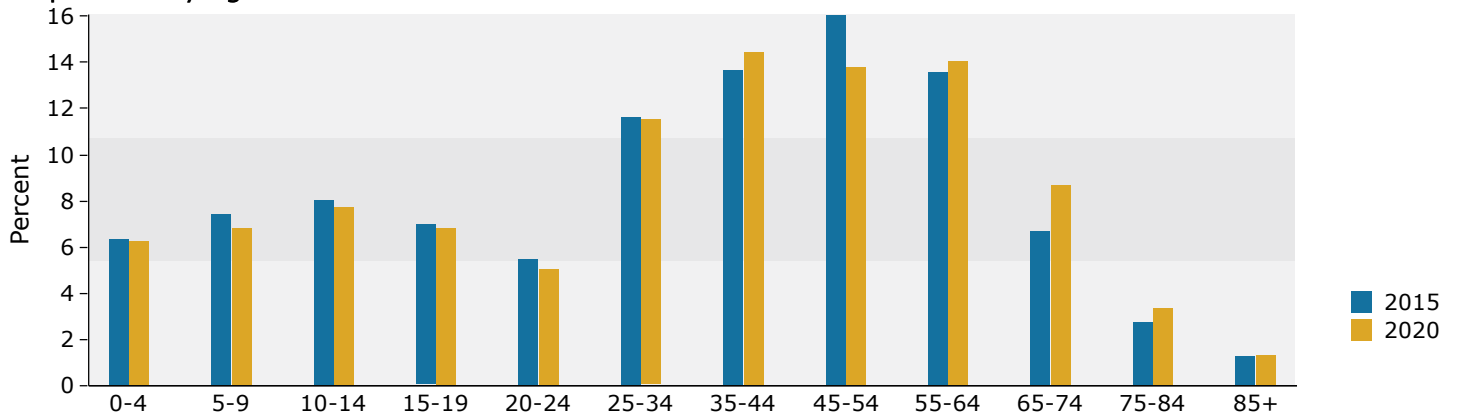
Lyman Blvd and Powers Blvd
1200 Lyman Blvd, Chanhassen, Minnesota, 55317
Ring: 7 mile radius

Sam Svendahl
Latitude: 44.84080
Longitude: -93.55330

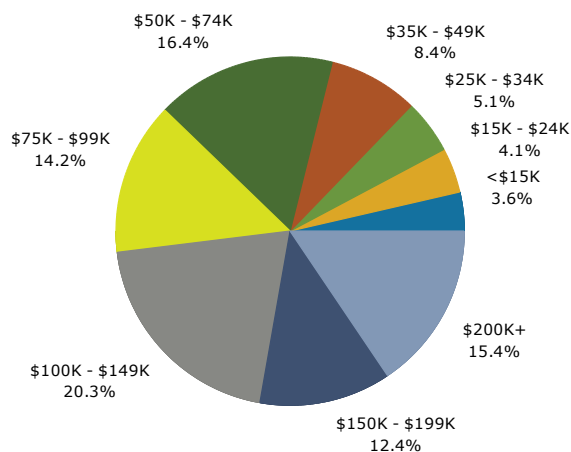
Trends 2015-2020



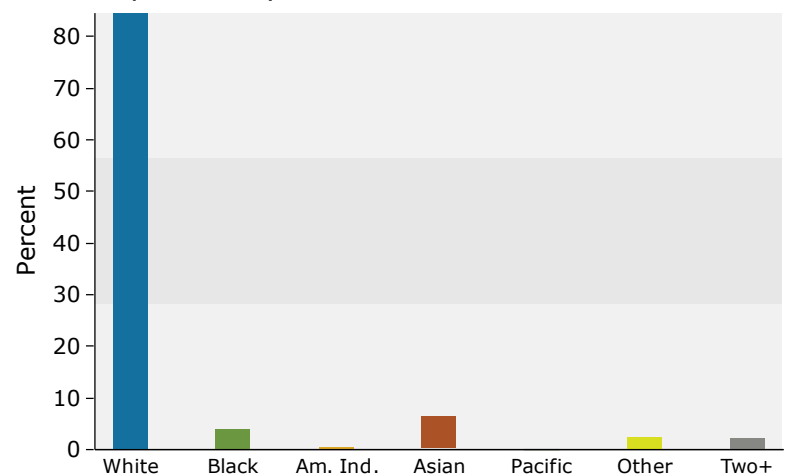
Population by Age



2015 Household Income



2015 Population by Race



2015 Percent Hispanic Origin: 5.2%

Source: U.S. Census Bureau, Census 2010 Summary File 1. Esri forecasts for 2015 and 2020.

May 16, 2016

Market Profile

Lyman Blvd and Powers Blvd
1200 Lyman Blvd, Chanhassen, Minnesota, 55317
Rings: 3, 5, 7 mile radii

Sam Svendahl
Latitude: 44.84080
Longitude: -93.55330

	3 miles	5 miles	7 miles
Population Summary			
2000 Total Population	28,376	96,841	147,686
2010 Total Population	33,446	112,214	175,804
2015 Total Population	35,227	117,552	184,548
2015 Group Quarters	32	1,081	1,675
2020 Total Population	36,675	122,518	193,483
2015-2020 Annual Rate	0.81%	0.83%	0.95%
Household Summary			
2000 Households	9,771	34,265	53,713
2000 Average Household Size	2.90	2.80	2.73
2010 Households	12,215	41,268	65,929
2010 Average Household Size	2.74	2.69	2.64
2015 Households	13,013	43,512	69,537
2015 Average Household Size	2.70	2.68	2.63
2020 Households	13,639	45,487	73,055
2020 Average Household Size	2.69	2.67	2.63
2015-2020 Annual Rate	0.94%	0.89%	0.99%
2010 Families	9,029	30,049	47,290
2010 Average Family Size	3.23	3.18	3.14
2015 Families	9,576	31,543	49,710
2015 Average Family Size	3.20	3.17	3.13
2020 Families	10,023	32,904	52,144
2020 Average Family Size	3.18	3.16	3.13
2015-2020 Annual Rate	0.92%	0.85%	0.96%
Housing Unit Summary			
2000 Housing Units	9,915	35,043	55,171
Owner Occupied Housing Units	87.1%	80.7%	78.8%
Renter Occupied Housing Units	11.5%	17.1%	18.5%
Vacant Housing Units	1.4%	2.2%	2.6%
2010 Housing Units	12,715	43,119	69,218
Owner Occupied Housing Units	81.5%	76.1%	74.3%
Renter Occupied Housing Units	14.6%	19.6%	21.0%
Vacant Housing Units	3.9%	4.3%	4.8%
2015 Housing Units	13,503	45,350	72,757
Owner Occupied Housing Units	81.8%	76.3%	74.5%
Renter Occupied Housing Units	14.6%	19.6%	21.0%
Vacant Housing Units	3.6%	4.1%	4.4%
2020 Housing Units	14,225	47,478	76,366
Owner Occupied Housing Units	81.2%	76.2%	74.6%
Renter Occupied Housing Units	14.7%	19.6%	21.1%
Vacant Housing Units	4.1%	4.2%	4.3%
Median Household Income			
2015	\$113,640	\$97,209	\$95,804
2020	\$124,923	\$108,252	\$106,617
Median Home Value			
2015	\$397,116	\$339,303	\$344,521
2020	\$472,954	\$399,071	\$401,017
Per Capita Income			
2015	\$54,688	\$47,085	\$47,337
2020	\$61,283	\$53,381	\$53,537
Median Age			
2010	38.3	37.0	37.1
2015	39.2	37.9	38.1
2020	40.3	38.9	38.8

Data Note: Household population includes persons not residing in group quarters. Average Household Size is the household population divided by total households. Persons in families include the householder and persons related to the householder by birth, marriage, or adoption. Per Capita Income represents the income received by all persons aged 15 years and over divided by the total population.

Source: U.S. Census Bureau, Census 2010 Summary File 1. Esri forecasts for 2015 and 2020. Esri converted Census 2000 data into 2010 geography.

May 16, 2016



Market Profile

Lyman Blvd and Powers Blvd
1200 Lyman Blvd, Chanhassen, Minnesota, 55317
Rings: 3, 5, 7 mile radii

Sam Svendahl
Latitude: 44.84080
Longitude: -93.55330

	3 miles	5 miles	7 miles
2015 Households by Income			
Household Income Base	13,013	43,512	69,537
<\$15,000	2.1%	3.5%	3.6%
\$15,000 - \$24,999	2.7%	4.2%	4.1%
\$25,000 - \$34,999	3.3%	5.0%	5.1%
\$35,000 - \$49,999	5.5%	7.9%	8.4%
\$50,000 - \$74,999	14.0%	16.3%	16.4%
\$75,000 - \$99,999	14.3%	14.4%	14.2%
\$100,000 - \$149,999	21.9%	20.0%	20.3%
\$150,000 - \$199,999	15.4%	13.2%	12.4%
\$200,000+	20.8%	15.6%	15.4%
Average Household Income	\$147,642	\$126,800	\$125,494
2020 Households by Income			
Household Income Base	13,639	45,487	73,055
<\$15,000	1.7%	2.9%	3.0%
\$15,000 - \$24,999	1.7%	2.8%	2.7%
\$25,000 - \$34,999	2.3%	3.6%	3.7%
\$35,000 - \$49,999	4.2%	6.5%	6.9%
\$50,000 - \$74,999	11.6%	14.3%	14.7%
\$75,000 - \$99,999	14.4%	14.6%	14.6%
\$100,000 - \$149,999	23.4%	22.0%	22.2%
\$150,000 - \$199,999	16.8%	14.8%	14.2%
\$200,000+	23.9%	18.4%	18.0%
Average Household Income	\$164,428	\$143,342	\$141,671
2015 Owner Occupied Housing Units by Value			
Total	11,042	34,621	54,231
<\$50,000	3.0%	1.8%	1.3%
\$50,000 - \$99,999	1.3%	1.1%	1.1%
\$100,000 - \$149,999	1.6%	2.6%	2.7%
\$150,000 - \$199,999	6.7%	9.8%	9.5%
\$200,000 - \$249,999	10.1%	13.1%	11.8%
\$250,000 - \$299,999	7.4%	13.4%	13.6%
\$300,000 - \$399,999	20.6%	21.0%	22.3%
\$400,000 - \$499,999	16.5%	14.3%	14.1%
\$500,000 - \$749,999	20.9%	14.4%	14.3%
\$750,000 - \$999,999	7.0%	4.7%	4.9%
\$1,000,000 +	5.1%	3.9%	4.5%
Average Home Value	\$459,578	\$404,930	\$413,859
2020 Owner Occupied Housing Units by Value			
Total	11,546	36,163	56,978
<\$50,000	2.2%	1.2%	0.8%
\$50,000 - \$99,999	0.2%	0.4%	0.4%
\$100,000 - \$149,999	0.3%	0.9%	0.9%
\$150,000 - \$199,999	1.9%	4.7%	4.3%
\$200,000 - \$249,999	4.3%	8.7%	7.6%
\$250,000 - \$299,999	5.3%	11.6%	11.5%
\$300,000 - \$399,999	20.8%	22.6%	24.1%
\$400,000 - \$499,999	20.6%	18.5%	18.4%
\$500,000 - \$749,999	21.2%	15.7%	15.3%
\$750,000 - \$999,999	14.7%	9.7%	10.0%
\$1,000,000 +	8.4%	6.0%	6.5%
Average Home Value	\$561,299	\$481,142	\$489,493

Data Note: Income represents the preceding year, expressed in current dollars. Household income includes wage and salary earnings, interest dividends, net rents, pensions, SSI and welfare payments, child support, and alimony.

Source: U.S. Census Bureau, Census 2010 Summary File 1. Esri forecasts for 2015 and 2020. Esri converted Census 2000 data into 2010 geography.

May 16, 2016

Market Profile

Lyman Blvd and Powers Blvd
1200 Lyman Blvd, Chanhassen, Minnesota, 55317
Rings: 3, 5, 7 mile radii

Sam Svendahl
Latitude: 44.84080
Longitude: -93.55330

	3 miles	5 miles	7 miles
2010 Population by Age			
Total	33,443	112,215	175,804
0 - 4	6.0%	6.9%	7.0%
5 - 9	8.3%	7.9%	7.8%
10 - 14	9.8%	8.5%	8.1%
15 - 24	11.6%	11.8%	11.4%
25 - 34	10.0%	12.1%	12.8%
35 - 44	15.6%	15.1%	14.9%
45 - 54	20.5%	18.5%	17.6%
55 - 64	11.0%	11.3%	11.5%
65 - 74	4.3%	4.7%	5.0%
75 - 84	2.0%	2.4%	2.7%
85 +	0.9%	0.9%	1.2%
18 +	70.0%	71.4%	72.0%
2015 Population by Age			
Total	35,227	117,552	184,547
0 - 4	5.4%	6.3%	6.4%
5 - 9	7.0%	7.4%	7.4%
10 - 14	8.8%	8.1%	8.0%
15 - 24	13.6%	12.9%	12.5%
25 - 34	9.9%	11.5%	11.6%
35 - 44	13.2%	13.6%	13.7%
45 - 54	19.0%	16.7%	16.1%
55 - 64	14.2%	13.8%	13.6%
65 - 74	6.0%	6.2%	6.7%
75 - 84	2.1%	2.5%	2.7%
85 +	0.9%	1.0%	1.3%
18 +	73.6%	73.6%	73.6%
2020 Population by Age			
Total	36,674	122,518	193,483
0 - 4	5.3%	6.2%	6.3%
5 - 9	6.4%	6.8%	6.8%
10 - 14	8.2%	7.9%	7.8%
15 - 24	12.3%	11.8%	11.9%
25 - 34	10.3%	11.6%	11.5%
35 - 44	14.2%	14.6%	14.5%
45 - 54	15.8%	14.1%	13.8%
55 - 64	15.7%	14.6%	14.1%
65 - 74	8.3%	8.4%	8.7%
75 - 84	2.7%	3.1%	3.4%
85 +	0.9%	1.0%	1.3%
18 +	75.2%	74.7%	74.6%
2010 Population by Sex			
Males	16,418	55,009	86,095
Females	17,028	57,205	89,709
2015 Population by Sex			
Males	17,322	57,655	90,468
Females	17,906	59,897	94,079
2020 Population by Sex			
Males	18,050	60,128	94,860
Females	18,625	62,390	98,622

Source: U.S. Census Bureau, Census 2010 Summary File 1. Esri forecasts for 2015 and 2020. Esri converted Census 2000 data into 2010 geography.

May 16, 2016

Market Profile

Lyman Blvd and Powers Blvd
1200 Lyman Blvd, Chanhassen, Minnesota, 55317
Rings: 3, 5, 7 mile radii

Sam Svendahl
Latitude: 44.84080
Longitude: -93.55330

	3 miles	5 miles	7 miles
2010 Population by Race/Ethnicity			
Total	33,445	112,215	175,805
White Alone	90.1%	87.6%	86.2%
Black Alone	1.4%	2.6%	3.3%
American Indian Alone	0.1%	0.4%	0.4%
Asian Alone	5.3%	4.8%	5.8%
Pacific Islander Alone	0.0%	0.0%	0.0%
Some Other Race Alone	1.3%	2.5%	2.1%
Two or More Races	1.7%	2.0%	2.1%
Hispanic Origin	3.3%	5.5%	4.7%
Diversity Index	23.6	30.9	31.9
2015 Population by Race/Ethnicity			
Total	35,227	117,552	184,548
White Alone	88.7%	85.9%	84.5%
Black Alone	1.8%	3.2%	3.9%
American Indian Alone	0.1%	0.4%	0.4%
Asian Alone	6.0%	5.4%	6.5%
Pacific Islander Alone	0.0%	0.0%	0.0%
Some Other Race Alone	1.4%	2.8%	2.4%
Two or More Races	2.0%	2.2%	2.3%
Hispanic Origin	3.6%	6.0%	5.2%
Diversity Index	26.4	34.3	35.1
2020 Population by Race/Ethnicity			
Total	36,676	122,517	193,483
White Alone	86.7%	83.6%	82.2%
Black Alone	2.2%	4.0%	4.7%
American Indian Alone	0.1%	0.5%	0.4%
Asian Alone	7.0%	6.1%	7.3%
Pacific Islander Alone	0.0%	0.0%	0.0%
Some Other Race Alone	1.6%	3.2%	2.7%
Two or More Races	2.3%	2.6%	2.7%
Hispanic Origin	4.1%	6.8%	5.8%
Diversity Index	30.1	38.5	39.1
2010 Population by Relationship and Household Type			
Total	33,446	112,214	175,804
In Households	99.9%	99.1%	99.1%
In Family Households	88.3%	86.7%	86.0%
Householder	27.1%	26.8%	26.9%
Spouse	23.4%	22.2%	22.4%
Child	35.3%	34.2%	33.3%
Other relative	1.5%	1.9%	2.0%
Nonrelative	1.0%	1.5%	1.4%
In Nonfamily Households	11.6%	12.4%	13.1%
In Group Quarters	0.1%	0.9%	0.9%
Institutionalized Population	0.0%	0.8%	0.7%
Noninstitutionalized Population	0.0%	0.1%	0.2%

Data Note: Persons of Hispanic Origin may be of any race. The Diversity Index measures the probability that two people from the same area will be from different race/ethnic groups.

Source: U.S. Census Bureau, Census 2010 Summary File 1. Esri forecasts for 2015 and 2020. Esri converted Census 2000 data into 2010 geography.

May 16, 2016

Market Profile

Lyman Blvd and Powers Blvd
1200 Lyman Blvd, Chanhassen, Minnesota, 55317
Rings: 3, 5, 7 mile radii

Sam Svendahl
Latitude: 44.84080
Longitude: -93.55330

	3 miles	5 miles	7 miles
2015 Population 25+ by Educational Attainment			
Total	22,986	76,894	121,339
Less than 9th Grade	0.8%	1.8%	1.6%
9th - 12th Grade, No Diploma	2.2%	2.6%	2.3%
High School Graduate	10.9%	14.9%	13.8%
GED/Alternative Credential	1.1%	2.0%	1.7%
Some College, No Degree	17.1%	17.6%	17.4%
Associate Degree	8.9%	9.8%	9.6%
Bachelor's Degree	39.8%	34.9%	36.2%
Graduate/Professional Degree	19.1%	16.5%	17.4%
2015 Population 15+ by Marital Status			
Total	27,777	92,050	144,334
Never Married	22.9%	26.0%	25.8%
Married	65.1%	60.6%	61.4%
Widowed	2.7%	3.1%	3.2%
Divorced	9.3%	10.3%	9.6%
2015 Civilian Population 16+ in Labor Force			
Civilian Employed	98.1%	97.6%	97.5%
Civilian Unemployed	1.9%	2.4%	2.5%
2015 Employed Population 16+ by Industry			
Total	18,991	63,853	100,317
Agriculture/Mining	0.9%	0.7%	0.7%
Construction	3.0%	3.7%	3.7%
Manufacturing	14.5%	14.7%	14.4%
Wholesale Trade	4.4%	3.8%	3.7%
Retail Trade	10.4%	11.5%	11.4%
Transportation/Utilities	2.8%	3.2%	3.5%
Information	2.2%	1.9%	2.0%
Finance/Insurance/Real Estate	12.2%	10.3%	11.0%
Services	48.1%	48.2%	47.5%
Public Administration	1.4%	2.1%	2.1%
2015 Employed Population 16+ by Occupation			
Total	18,992	63,852	100,319
White Collar	76.9%	72.5%	73.4%
Management/Business/Financial	27.3%	23.4%	23.6%
Professional	25.2%	24.3%	24.6%
Sales	14.0%	13.4%	13.7%
Administrative Support	10.4%	11.5%	11.6%
Services	11.1%	14.0%	13.7%
Blue Collar	12.1%	13.5%	12.9%
Farming/Forestry/Fishing	0.3%	0.2%	0.2%
Construction/Extraction	1.2%	2.5%	2.6%
Installation/Maintenance/Repair	2.9%	2.6%	2.4%
Production	4.5%	5.2%	4.7%
Transportation/Material Moving	3.1%	3.1%	3.0%

Source: U.S. Census Bureau, Census 2010 Summary File 1. Esri forecasts for 2015 and 2020. Esri converted Census 2000 data into 2010 geography.

May 16, 2016



Market Profile

Lyman Blvd and Powers Blvd
1200 Lyman Blvd, Chanhassen, Minnesota, 55317
Rings: 3, 5, 7 mile radii

Sam Svendahl
Latitude: 44.84080
Longitude: -93.55330

	3 miles	5 miles	7 miles
2010 Households by Type			
Total	12,215	41,268	65,928
Households with 1 Person	21.6%	21.9%	22.8%
Households with 2+ People	78.4%	78.1%	77.2%
Family Households	73.9%	72.8%	71.7%
Husband-wife Families	63.8%	60.3%	59.9%
With Related Children	35.7%	32.0%	31.0%
Other Family (No Spouse Present)	10.1%	12.5%	11.9%
Other Family with Male Householder	2.9%	3.6%	3.5%
With Related Children	1.9%	2.3%	2.1%
Other Family with Female Householder	7.1%	8.9%	8.4%
With Related Children	4.9%	6.2%	5.8%
Nonfamily Households	4.5%	5.3%	5.5%
All Households with Children	42.7%	40.7%	39.2%
Multigenerational Households	1.3%	1.9%	1.8%
Unmarried Partner Households	4.1%	5.2%	5.1%
Male-female	3.7%	4.7%	4.6%
Same-sex	0.4%	0.5%	0.5%
2010 Households by Size			
Total	12,215	41,269	65,928
1 Person Household	21.6%	21.9%	22.8%
2 Person Household	30.6%	31.9%	32.8%
3 Person Household	17.2%	17.2%	16.8%
4 Person Household	19.4%	18.2%	17.5%
5 Person Household	8.5%	7.6%	7.1%
6 Person Household	2.0%	2.2%	2.1%
7 + Person Household	0.7%	1.0%	1.0%
2010 Households by Tenure and Mortgage Status			
Total	12,215	41,268	65,929
Owner Occupied	84.8%	79.5%	78.0%
Owned with a Mortgage/Loan	71.9%	66.7%	64.7%
Owned Free and Clear	12.9%	12.8%	13.2%
Renter Occupied	15.2%	20.5%	22.0%

Data Note: Households with children include any households with people under age 18, related or not. Multigenerational households are families with 3 or more parent-child relationships. Unmarried partner households are usually classified as nonfamily households unless there is another member of the household related to the householder. Multigenerational and unmarried partner households are reported only to the tract level. Esri estimated block group data, which is used to estimate polygons or non-standard geography.

Source: U.S. Census Bureau, Census 2010 Summary File 1. Esri forecasts for 2015 and 2020. Esri converted Census 2000 data into 2010 geography.



Market Profile

Lyman Blvd and Powers Blvd
1200 Lyman Blvd, Chanhassen, Minnesota, 55317
Rings: 3, 5, 7 mile radii

Sam Svendahl
Latitude: 44.84080
Longitude: -93.55330

	3 miles	5 miles	7 miles
Top 3 Tapestry Segments			
1.	Professional Pride (1B)	Professional Pride (1B)	Professional Pride (1B)
2.	Soccer Moms (4A)	Soccer Moms (4A)	Savvy Suburbanites (1D)
3.	In Style (5B)	Savvy Suburbanites (1D)	Boomburbs (1C)
2015 Consumer Spending			
Apparel & Services: Total \$	\$58,912,595	\$170,342,358	\$269,988,999
Average Spent	\$4,527.21	\$3,914.84	\$3,882.67
Spending Potential Index	196	169	168
Computers & Accessories: Total \$	\$6,747,013	\$19,545,799	\$31,021,498
Average Spent	\$518.48	\$449.20	\$446.11
Spending Potential Index	199	172	171
Education: Total \$	\$42,620,992	\$121,025,375	\$192,324,709
Average Spent	\$3,275.26	\$2,781.43	\$2,765.79
Spending Potential Index	215	183	181
Entertainment/Recreation: Total \$	\$85,514,730	\$244,344,932	\$385,820,318
Average Spent	\$6,571.48	\$5,615.58	\$5,548.42
Spending Potential Index	198	170	168
Food at Home: Total \$	\$127,161,381	\$367,568,086	\$581,396,402
Average Spent	\$9,771.87	\$8,447.51	\$8,360.96
Spending Potential Index	187	162	160
Food Away from Home: Total \$	\$84,045,092	\$242,587,483	\$384,343,339
Average Spent	\$6,458.55	\$5,575.19	\$5,527.18
Spending Potential Index	197	170	168
Health Care: Total \$	\$118,273,723	\$335,928,988	\$529,143,378
Average Spent	\$9,088.89	\$7,720.38	\$7,609.52
Spending Potential Index	192	163	160
HH Furnishings & Equipment: Total \$	\$47,800,141	\$136,942,141	\$216,261,820
Average Spent	\$3,673.26	\$3,147.23	\$3,110.03
Spending Potential Index	200	171	169
Investments: Total \$	\$65,136,598	\$190,309,300	\$308,635,959
Average Spent	\$5,005.50	\$4,373.72	\$4,438.44
Spending Potential Index	182	159	161
Retail Goods: Total \$	\$639,904,568	\$1,834,797,841	\$2,895,922,805
Average Spent	\$49,174.25	\$42,167.63	\$41,645.78
Spending Potential Index	193	165	163
Shelter: Total \$	\$417,216,812	\$1,217,962,320	\$1,935,038,815
Average Spent	\$32,061.54	\$27,991.41	\$27,827.47
Spending Potential Index	195	170	169
TV/Video/Audio: Total \$	\$31,703,305	\$91,873,417	\$145,317,963
Average Spent	\$2,436.28	\$2,111.45	\$2,089.79
Spending Potential Index	186	161	160
Travel: Total \$	\$53,845,815	\$152,807,462	\$241,759,959
Average Spent	\$4,137.85	\$3,511.85	\$3,476.71
Spending Potential Index	212	180	178
Vehicle Maintenance & Repairs: Total \$	\$28,321,126	\$81,628,819	\$128,936,551
Average Spent	\$2,176.37	\$1,876.01	\$1,854.22
Spending Potential Index	195	168	166

Data Note: Consumer spending shows the amount spent on a variety of goods and services by households that reside in the area. Expenditures are shown by broad budget categories that are not mutually exclusive. Consumer spending does not equal business revenue. Total and Average Amount Spent Per Household represent annual figures. The Spending Potential Index represents the amount spent in the area relative to a national average of 100.

Source: Consumer Spending data are derived from the 2011 and 2012 Consumer Expenditure Surveys, Bureau of Labor Statistics. Esri.

Source: U.S. Census Bureau, Census 2010 Summary File 1. Esri forecasts for 2015 and 2020. Esri converted Census 2000 data into 2010 geography.

May 16, 2016