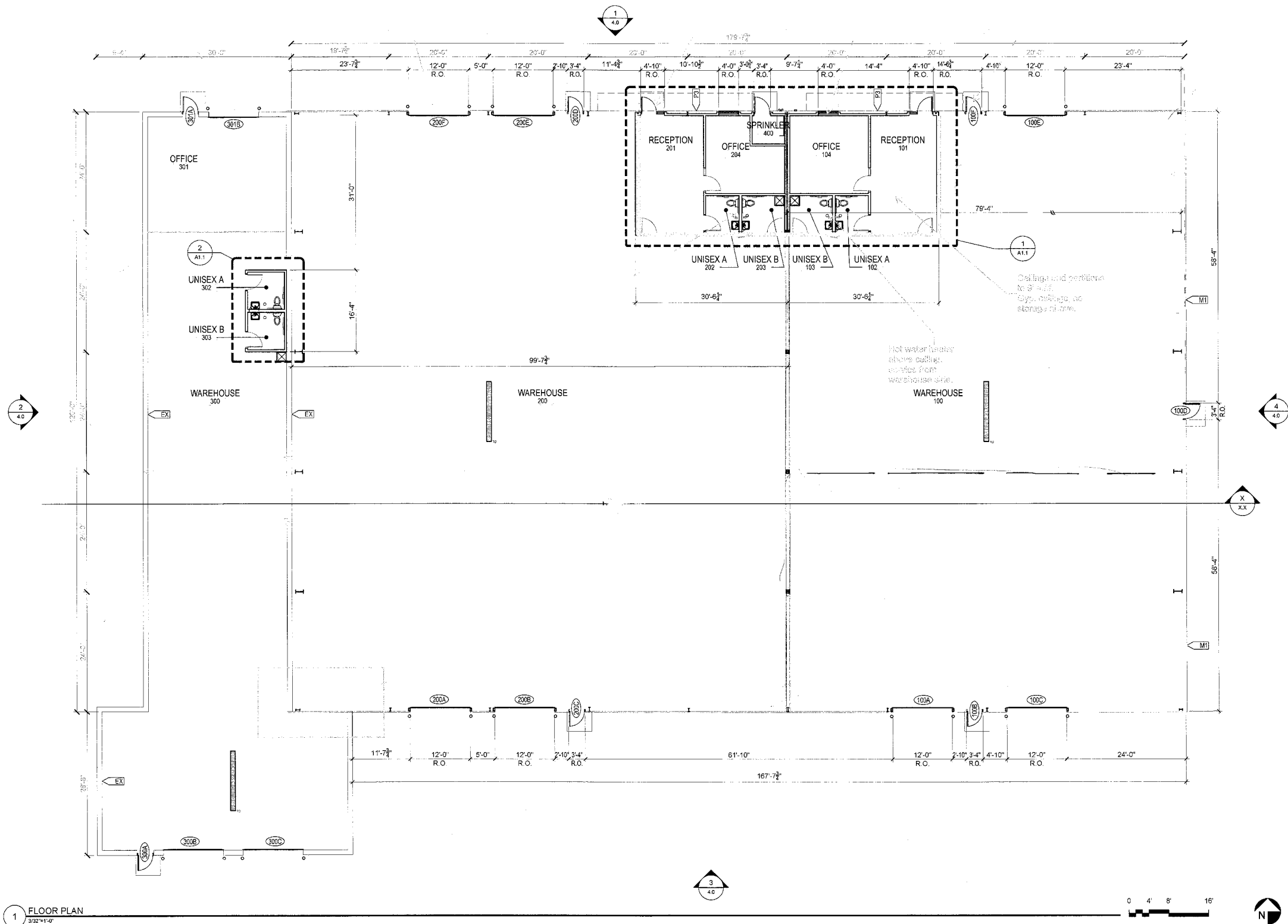


Plotted 8/11/2016 7:58 AM File: G:\2016\16155\_Liberty BusM40\_CONSTR DOCS\202\_A1.0\_FloorPlan\_16155.dwg By: Ryan Schroeder

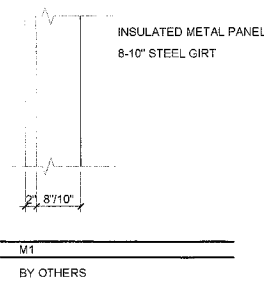
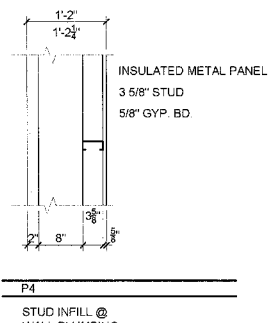
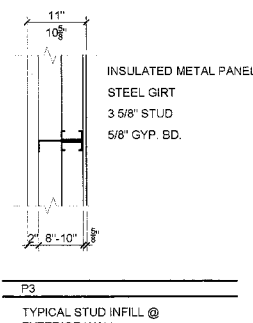
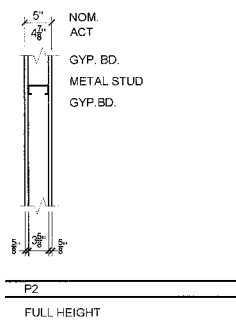
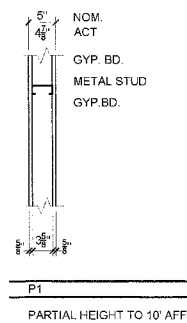


1 FLOOR PLAN  
332'-11-0"

- A) PARTITIONS ARE DIMENSIONED IN PLAN FINISH FACE TO FINISH FACE.
- B) CRITERIA FOR PARTITION HEIGHTS (OCCUPIED SPACES ONLY):  
- PARTITIONS WITHOUT SUSPENDED CEILINGS ON BOTH SIDES OF PARTITION EXTEND TO STRUCTURE.  
- PARTITIONS WITH SUSPENDED CEILINGS ON BOTH SIDES OF PARTITION TERMINATE 2" ABOVE SUSPENDED CEILINGS, UNLESS NOTED OTHERWISE.  
- PARTITIONS WITH SUSPENDED CEILINGS ON ONE SIDE AND NO CEILING ON THE OTHER SIDE OF PARTITION EXTEND TO STRUCTURE WITH GYP BD FULL HEIGHT ON ONE SIDE, UNLESS NOTED OTHERWISE.  
- "F" AS PART OF PARTITION TYPE INDICATOR DESIGNATES EXCEPTIONS OR CLARIFICATIONS TO THE ABOVE CRITERIA.
- C) PARTITION SYMBOL MAY BE USED IN CONJUNCTION WITH NOTES TO MODIFY CONSTRUCTION FOR UNIQUE CONDITIONS.  
- "F" AS PART OF PARTITION TYPE INDICATOR DESIGNATES EXCEPTIONS OR CLARIFICATIONS TO THE ABOVE CRITERIA.
- D) EXTERIOR STEEL STUDS - SEE STRUCTURAL.
- E) INTERIOR STEEL STUDS ARE 20 GA UNLESS OTHERWISE NOTED.
- F) ALL INTERIOR STEEL STUDS ARE 24" O.C. MAXIMUM UNLESS OTHERWISE NOTED.
- G) STEEL STUD SUPPLIER IS RESPONSIBLE FOR STUD GAUGE AND SPACING TO MEET DEFLECTION L/240 MINIMUM AND LOCAL CODE REQUIREMENTS.

### SYMBOL DESIGNATION

- E = EXISTING WALL  
X = EXTERIOR WALL  
P = PARTITION  
C = COOLER/FREEZER - PROVIDED BY OTHERS  
EF = EXISTING / FURRED  
EM = EXISTING MASONRY
- S = SOUND INSULATION  
F = FULL HEIGHT GYP. BD. EACH SIDE  
A = ALTERNATE CONSTRUCTION  
3 = SEE WALL TYPE BELOW FOR CONSTRUCTION TYPE



### FLOOR PLAN KEY NOTES

- 24"x24" FLOOR SINK. SEE MECHANICAL.
- METAL WALL PANEL AND GIRT BY STEEL BUILDING SUPPLIER.
- CONCRETE STOOP, DOWEL TO FOUNDATION. SEE STRUCTURAL.
- PIPE BOLLARD, SEE 1/A6.0
- ENTRY CANOPY ABOVE BY STEEL BLDG SUPPLIER
- 12"x12-0" TRENCH DRAIN. PROVIDE VENTING AS REQUIRED BY CODE.
- HOSE BIBB, SEE MECHANICAL.
- SIAMESE CONNECTION, SEE MECHANICAL DOCUMENTS.
- STEEL COLUMN, SEE STRUCTURAL.
- STAND PIPE / SPRINKLER RISER, SEE MECHANICAL.
- LINER PANEL ABOVE OFFICES / RESTROOMS BY METAL BUILDING SUPPLIER.
- GUTTER WITH DOWNSPOUTS. VERIFY ALL DOWNSPOUT LOCATIONS.
- FLOOR DRAIN, SEE MECHANICAL.
- ELECTRICAL PANEL, 400 AMP 3 PHASE. VERIFY SIZES AND LOCATION.
- 6 GALLON WATER HEATER, MOUNT ABOVE CEILING. SEE MECHANICAL.
- FIRE DEPARTMENT LOCK BOX, VERIFY FINAL LOCATION WITH CITY.

Electrical specifications are used to place the specific notes and notes of such light fixtures for the energy code report. Do you have preferred fixtures?  
- LED High Bay  
- LED surface mount led  
- LED recessed  
- LED wall pack  
- Exterior wall pack  
- Exterior wall pack (if different, be a 1)  
- Exterior wall pack (if different, be a 1)  
- Exterior wall pack (if different, be a 1)

### FLOOR PLAN NOTES

- \* VERIFY ALL DIMENSIONS FOR NEW WALLS AND FLOOR COVERINGS. VERIFY THESE DIMENSIONS WITHIN THE EXISTING BUILDING SHELL PRIOR TO ANY CONSTRUCTION AND REPORT ANY DISCREPANCIES TO THE ARCHITECTS OFFICE IMMEDIATELY.
- DIMENSIONS ARE TO THE EXTERIOR FACE OF THE BUILDING SHELL GIRT TO THE FINISH MATERIAL AND OPENINGS UNLESS NOTED OTHERWISE.
  - TYPICAL EXTERIOR WALL CONSTRUCTION IS P3 UNLESS NOTED OTHERWISE.
  - TYPICAL INTERIOR WALL CONSTRUCTION IS P1 UNLESS NOTED OTHERWISE.
  - PROVIDE HORIZONTAL BRACING AT TOP OF WALLS AS NEEDED AT LOW PARTITION WALLS THAT ARE FREE STANDING.
  - G.C. IS RESPONSIBLE FOR CONSTRUCTION AND INSTALLATION OF ALL CUSTOM CABINETRY, SHELVING, COUNTERTOPS, ETC. AS SHOWN ON SHEET.
  - G.C. IS RESPONSIBLE TO COORDINATE THE WORK AND SCHEDULE OF THE OWNERS SECURITY CONTRACTOR.
  - PROVIDE ANY/ALL WOOD BLOCKING REQUIRED IN WALLS FOR CABINETRY, COUNTERTOPS, SHELVING, GRAB BARS, LAVATORIES, DISPLAYS, ETC.
  - PROVIDE MOISTURE RESISTANT GYP. BD. IN RESTROOMS.
  - G.C. IS TO TAPE AND SAND SMOOTH TO A LEVEL FOUR FINISH ALL NEW GYP. BD. SURFACES.
  - PROVIDE ACOUSTIC INSULATION AT INTERIOR WALL CONSTRUCTION SURROUNDING OFFICES AND RESTROOMS.
  - PROVIDE INSULATION AT EXTERIOR WALL CONSTRUCTION.
  - UNLESS NOTED OTHERWISE, ALL NEW MECHANICAL, PLUMBING AND LIGHT FIXTURES ARE TO BE PROVIDED AND INSTALLED BY THE GENERAL CONTRACTOR.
  - SEE A6.1 FOR PLUMBING FIXTURE LEGEND.



ARCHITECTURE  
INTERIORS

4331 West 35th Street  
Suite 200  
St. Louis Park, Minnesota  
952.541.9889  
planforcegroup.com

STAGECOACH  
OUTLOT BUILDING

7802 COUNTY RD 101  
SHAKOPEE, MN 55379

I hereby certify that this plan was prepared by me or under my direct supervision and that I am a duly licensed architect under the laws of the State of Minnesota.

Signature: \_\_\_\_\_  
Name: RYAN SCHROEDER  
Registration: 50047  
Project Contact: RYAN SCHROEDER  
Phone Number: 952.541.9889

Print History: \_\_\_\_\_ Date: 07-22-2016  
SAC REVIEW: \_\_\_\_\_

FLOOR PLAN

Project: 16165  
Drawn: X  
Checked: RS

A1.0

STAGECOACH  
SHAKOPEE, MN