

FOR LEASE > OFFICE BUILDING

500 Cherrington Center Drive

CHERRINGTON CORPORATE CENTER, BUILDING 500, MOON TOWNSHIP, PA 15108



Property Information

- > Building renovations complete
- > Four suites available:
 - 2,928 SF
 - 4,186 SF (As of 8/1/15)
 - 4,346 SF
- > Easy access to transportation corridors and excellent visibility in a premier suburban office park
- > Property management on-site
- > Institutional grade ownership

Building 500 > Amenities

- > New building systems throughout
- > Abundant free parking
- > Great views and ample natural light

LEASE > RATE

Please contact one of our exclusive leasing professionals to discuss lease terms

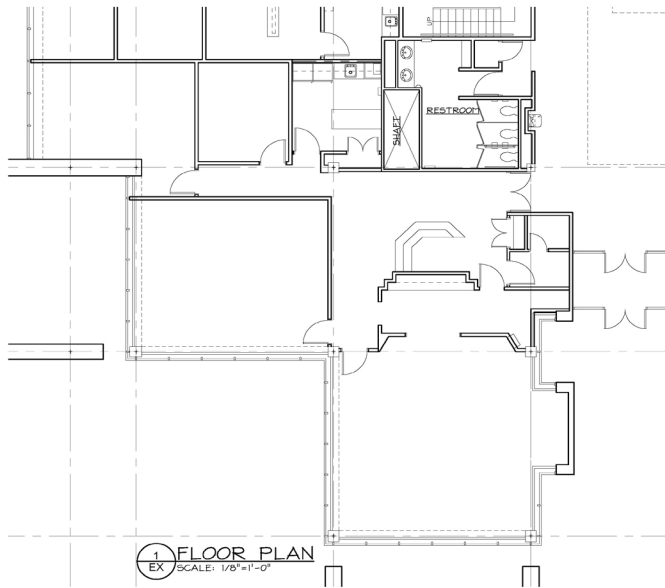


**Equity
Commonwealth**

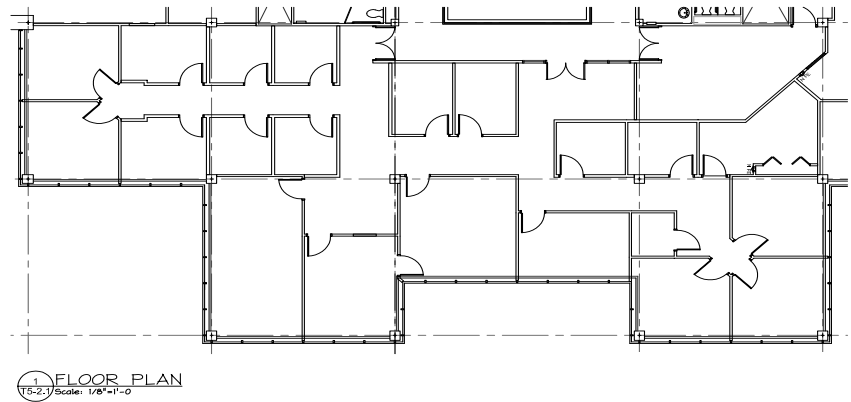
PAUL HORAN
FOUNDING PRINCIPAL | PITTSBURGH
OFFICE BROKERAGE
412 321 4200 | EXT. 205
paul.horan@colliers.com

EDWARD LAWRENCE ^{MBA}
PRINCIPAL | PITTSBURGH
OFFICE BROKERAGE
412 321 4200 | EXT. 213
ed.lawrence@colliers.com

ALEXIS WILKERSON
ASSOCIATE | PITTSBURGH
OFFICE BROKERAGE
412 321 4200 | EXT. 225
alexis.wilkerson@colliers.com



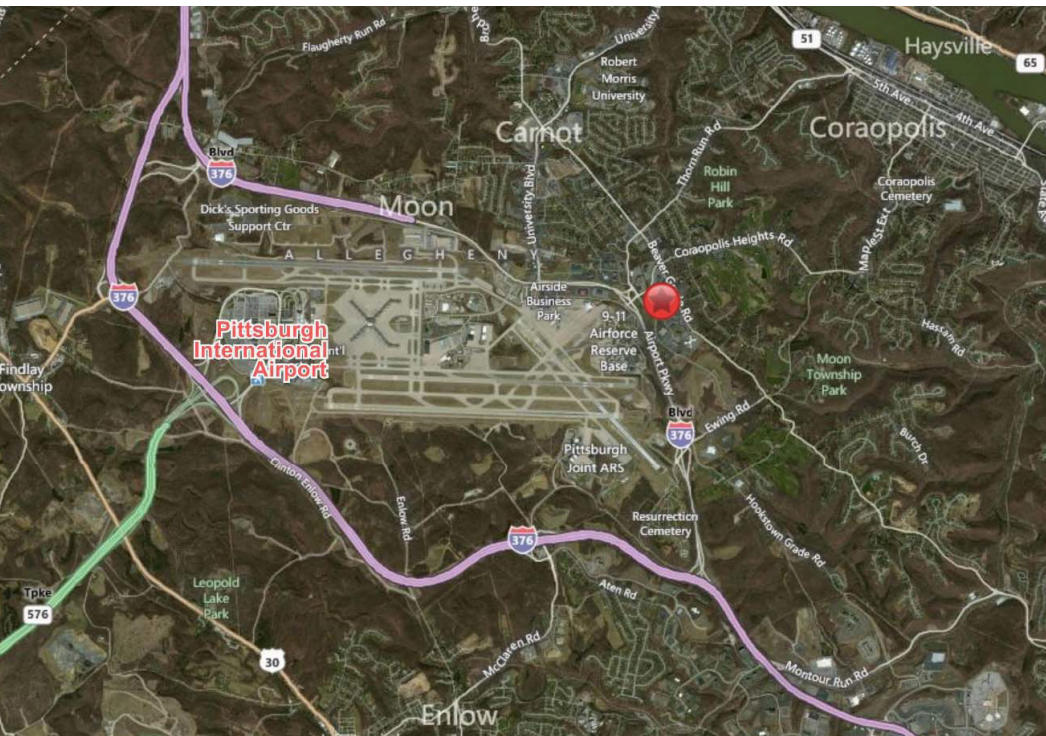
1st Floor
2,928 SF



2nd Floor
4,346 SF

Location > Access

Situated along the Parkway West Corridor, Cherrington Corporate Center | Building 500 is accessible via two interchanges from Route 60 (Ewing Road and Thorn Run Road), located in close proximity to the Pittsburgh International Airport and just 20 minutes to downtown Pittsburgh.



Contact Us

PAUL HORAN
FOUNDING PRINCIPAL | PITTSBURGH
OFFICE BROKERAGE
412 321 4200 | EXT. 205
paul.horan@colliers.com

EDWARD LAWRENCE MBA
PRINCIPAL | PITTSBURGH
OFFICE BROKERAGE
412 321 4200 | EXT. 213
ed.lawrence@colliers.com

ALEXIS WILKERSON
ASSOCIATE | PITTSBURGH
OFFICE BROKERAGE
412 321 4200 | EXT. 225
alexis.wilkerson@colliers.com

COLLIERS INTERNATIONAL | PITTSBURGH
Two Gateway Center, Suite 125
603 Stanwix Street
Pittsburgh, PA 15222
www.colliers.com/pittsburgh