

FOR SALE > OFFICE

Office Building in Powers Avenue Industrial Park

3035 POWERS AVE., JACKSONVILLE, FL 32207

9,856± SF OFFICE BUILDING



Price Reduced



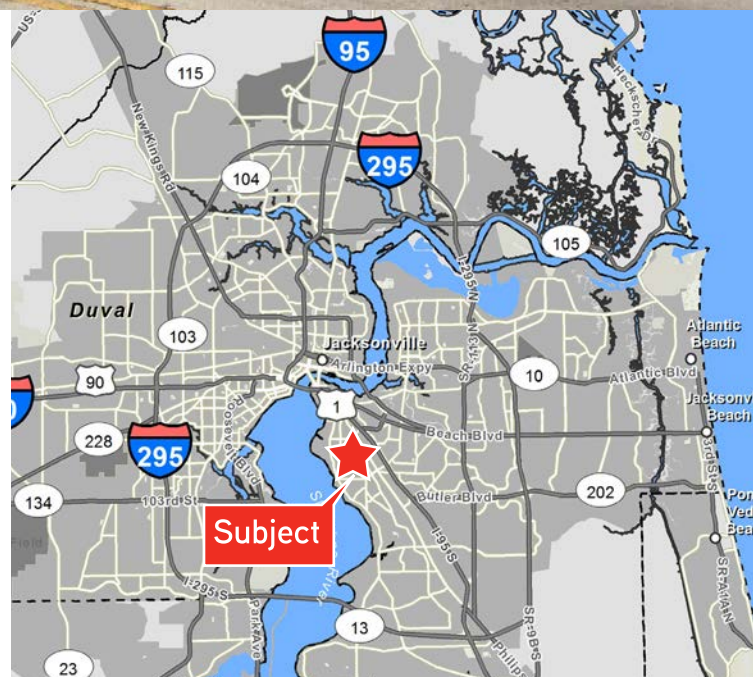
Property Features

- > Office building with 9,856± SF
- > Located in the Powers Avenue Industrial Park
- > Easy access to University Blvd., St Augustine Rd., US 1 and I-95; 44± surface parking spaces
- > 100% of building is occupied by Bastech
- > 0.86± acres zoned Industrial Light (IL)
- > Sale Price: ~~\$775,000~~

REDUCED: \$689,000 (\$69.90/SF)

Demographics	1 Mile	3 Mile	5 Mile
2017 Population Estimate	5,902	60,892	163,167
2022 Population Estimate	6,277	64,116	172,074
2017 Average HH Income	\$50,049	\$64,118	\$66,044

Source: CoStar



RONALD A. MCVAY
+1 904 358 1206 | EXT 1123
JACKSONVILLE, FL
ronald.mcvay@colliers.com

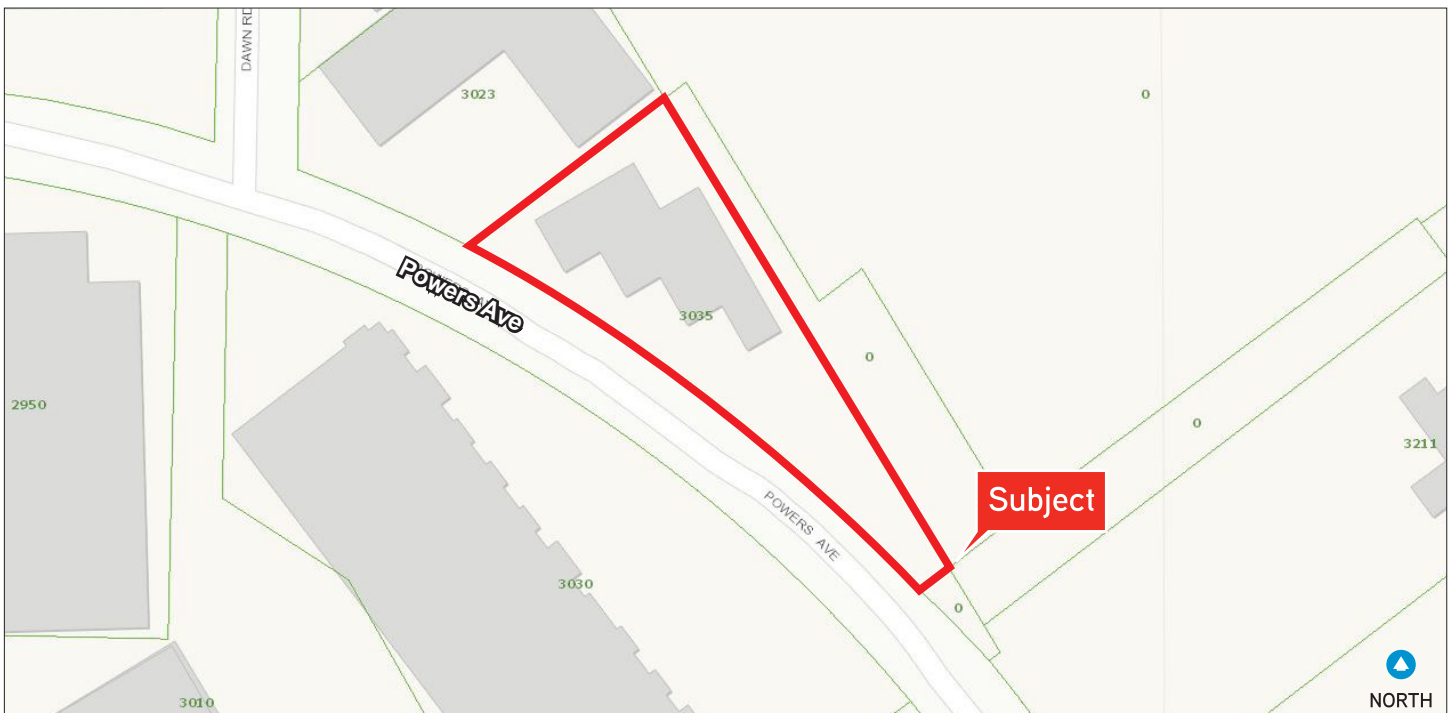
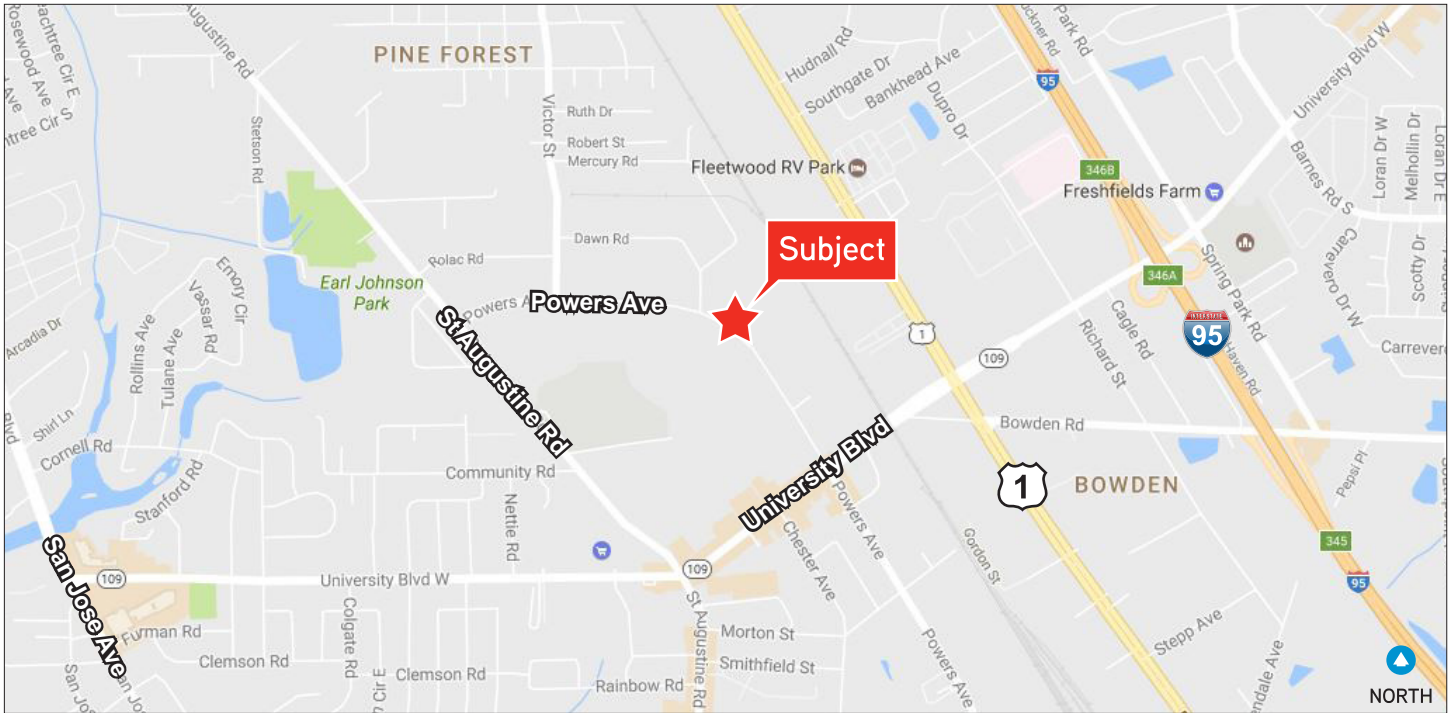
7041

COLLIERS INTERNATIONAL
NORTHEAST FLORIDA
50 N. Laura Street, Suite 1725
Jacksonville, FL 32202
www.colliers.com/jacksonville

FOR SALE > OFFICE

Street & Plat Map

3035 POWERS AVE., JACKSONVILLE, FL 32207



FOR SALE > OFFICE

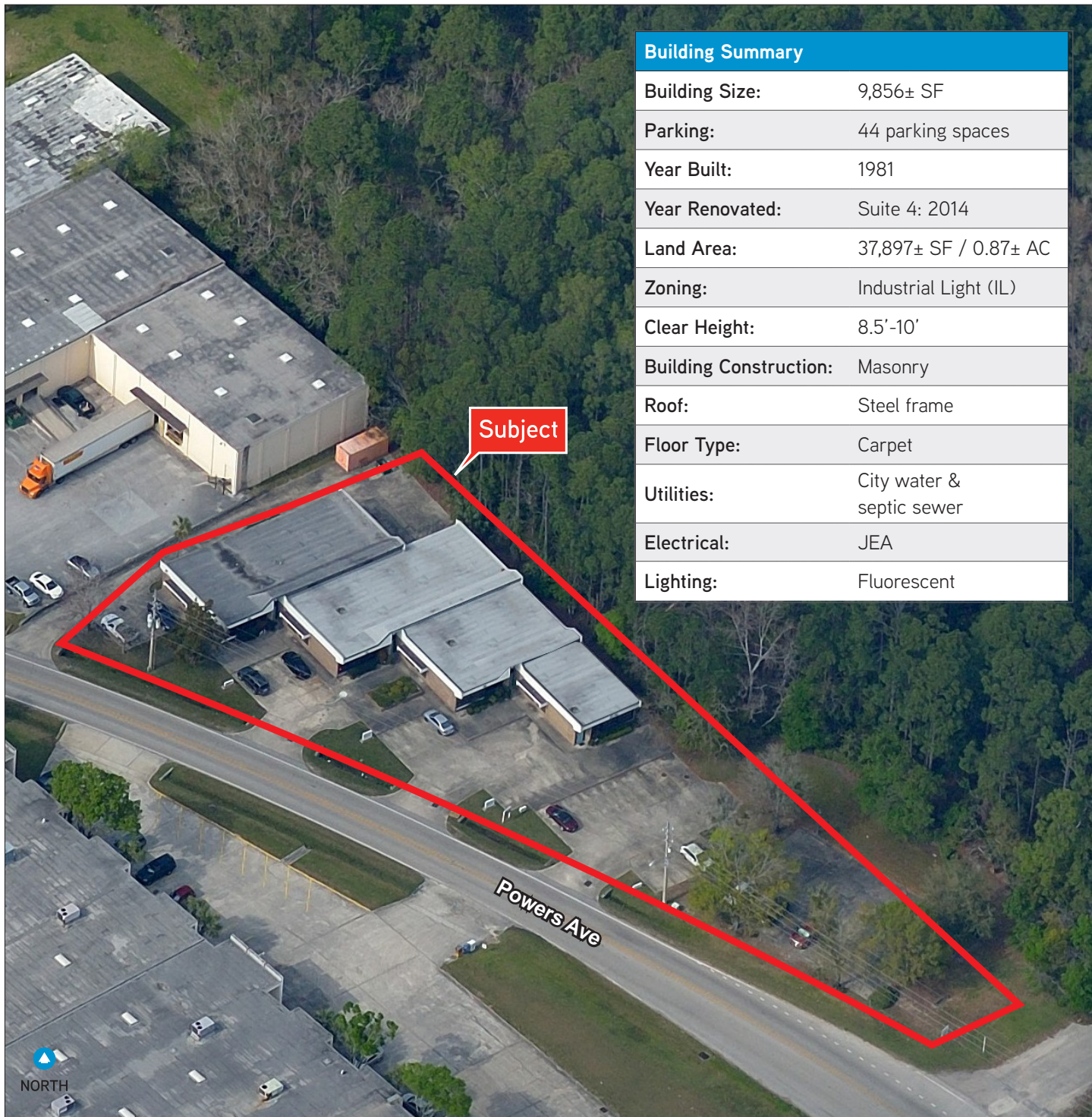
Property Photos

3035 POWERS AVE., JACKSONVILLE, FL 32207



Aerial & Building Summary

3035 POWERS AVE., JACKSONVILLE, FL 32207



Building Summary

Building Size:	9,856± SF
Parking:	44 parking spaces
Year Built:	1981
Year Renovated:	Suite 4: 2014
Land Area:	37,897± SF / 0.87± AC
Zoning:	Industrial Light (IL)
Clear Height:	8.5'-10'
Building Construction:	Masonry
Roof:	Steel frame
Floor Type:	Carpet
Utilities:	City water & septic sewer
Electrical:	JEA
Lighting:	Fluorescent

Available: 9,856± SF Office Building

A phylogenetic tree showing the relationship between the 16S rDNA sequence of *Bacillus anthracis* strain BAS and other sequences. The tree is rooted at the bottom left with a bootstrap value of 84. The main branch splits into two major groups. The left group has a bootstrap value of 40 and further splits into a clade with bootstrap values of 5, 16, and 17, and another clade with bootstrap values of 23, 4, 16, and 18. The right group has a bootstrap value of 28 and further splits into a clade with bootstrap values of 4, 16, and 18, and another clade with bootstrap values of 23, 4, 16, and 18. The label "BAS" is placed next to the node with bootstrap values 4, 16, and 18 in the lower right clade.

Please contact us to see this property

This document has been prepared by COLLIERS INTERNATIONAL | Northeast Florida for advertising and general information only. COLLIERS INTERNATIONAL makes no guarantees, representations or warranties of any kind, expressed or implied, regarding the information including, but not limited to, warranties of content, accuracy and reliability. Any interested party should undertake their own inquiries as to the accuracy of the information. COLLIERS INTERNATIONAL excludes unequivocally all inferred or implied terms, conditions and warranties arising out of this document and excludes all liability for loss and damages arising therefrom. COLLIERS INTERNATIONAL is a worldwide affiliation of independently owned and operated companies. This publication is the copyrighted property of COLLIERS INTERNATIONAL and/or its licensor(s). © 2016. All rights reserved.

