

FOR LEASE > OFFICE SPACE

SouthSide Works, Building 3



424 SOUTH 27TH STREET, PITTSBURGH, PA 15203



Property Highlights

> 3rd Floor | up to 3,187 RSF contiguous

Suite 301 - 1,232 RSF

Suite 303 - 960 RSF

Suite 305 - 995 SF

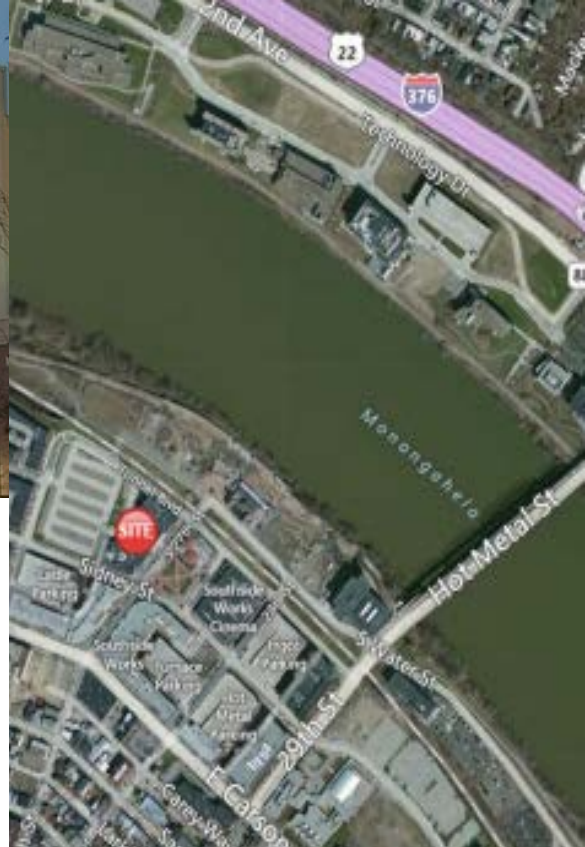
Suite 309 - 2,519 SF

- > Abundant **affordable parking** (Half the cost of Downtown) within close walking distance
- > Beautifully landscaped with scenic courtyards, commissioned art & riverfront trails
- > On site property management
- > Excellent access to I-376, Second Avenue & the Oakland area
- > Minutes from Downtown Pittsburgh

PAUL HORAN
FOUNDING PRINCIPAL | PITTSBURGH
OFFICE BROKERAGE
412 321 4200 | EXT. 205
paul.horan@colliers.com

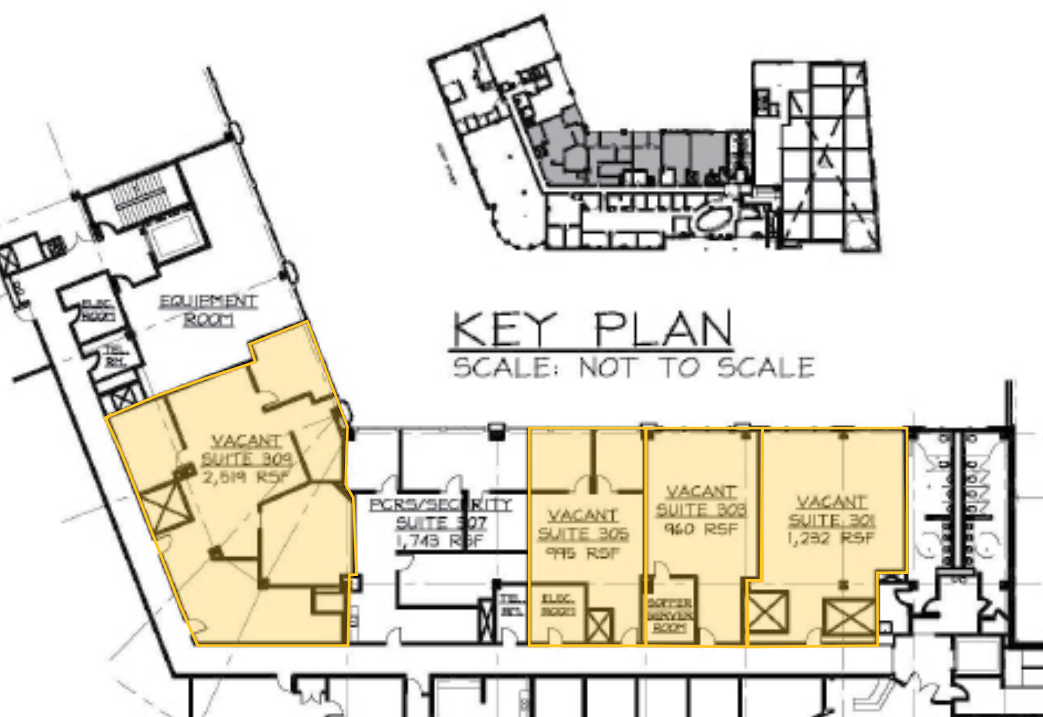
EDWARD LAWRENCE
PRINCIPAL | PITTSBURGH
OFFICE BROKERAGE
412 321 4200 | EXT. 213
ed.lawrence@colliers.com

MAMADOU BALDÉ Esq.
VICE PRESIDENT | PITTSBURGH
OFFICE BROKERAGE
412 321 4200 | EXT. 224
mamadou.balde@colliers.com



Surrounded by Numerous Amenities to Include the Following:

- > **Restaurants** – McCormick & Schmick's, Cheesecake Factory, Hofbrahaus, Qdoba Mexican Grille, Mongolian Grill, Claddagh Irish Pub, Subway, Muscle Maker Grill, Pita Pit & Subway
- > **Shops** – American Eagle Outfitters, Urban Outfitters, Recreational Equipment, Eyetique & GNC
- > **Play** – LA Fitness & SouthSide Works Cinema



Third Floor | 5,257 RSF

Contact Us

PAUL HORAN
FOUNDING PRINCIPAL | PITTSBURGH
OFFICE BROKERAGE
412 321 4200 EXT. 205
paul.horan@colliers.com

EDWARD LAWRENCE MBA
PRINCIPAL | PITTSBURGH
OFFICE BROKERAGE
412 321 4200 EXT. 213
ed.lawrence@colliers.com

MAMADOU BALDÉ ESQ.
VICE PRESIDENT | PITTSBURGH
OFFICE BROKERAGE
412 321 4200 EXT. 224
mamadou.balde@colliers.com

COLLIERS INTERNATIONAL | PITTSBURGH
Two Gateway Center, Suite 125
603 Stanwix Street
Pittsburgh, PA 15222
www.colliers.com

The information contained herein has been given to us by the owner of the property or other sources we deem reliable. We have no reason to doubt its accuracy, but we do not guarantee it. All information should be verified prior to purchase or lease.

