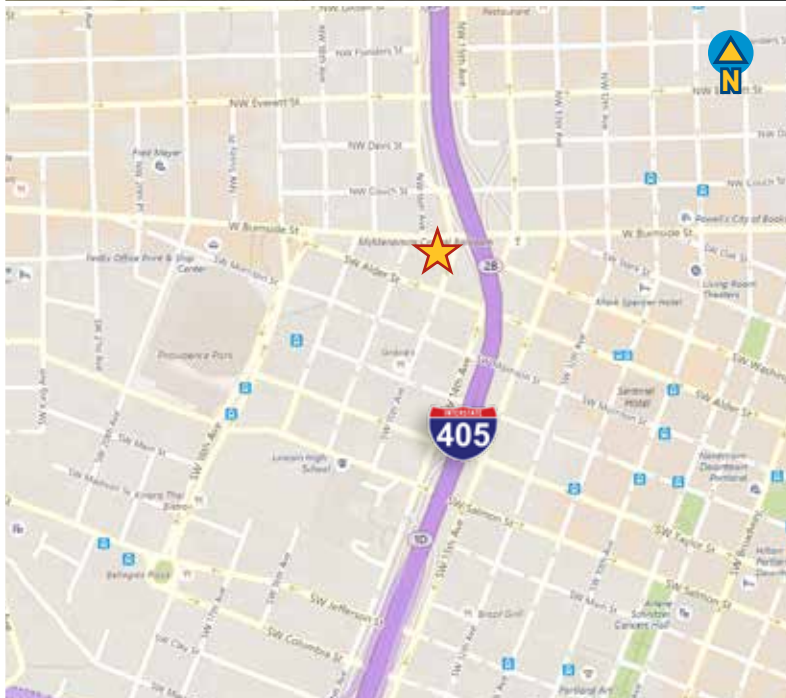


FOR LEASE > MIDTOWN PLAZA

# Retail & Industrial Maker Space

1543 SW ALDER STREET, PORTLAND, OR 97205



## Space Overview

This is a unique opportunity to lease high exposure retail space with the ability to conduct warehousing and production in the back. The space is centrally located on Alder Street, blocks away from Providence Park I-405, and the Brewery Blocks.

- 15,977 SF ground floor retail space
  - Additional second floor warehouse space can also be made available
- CX - Central Commercial Zoning**
- Could include retail, recreation, entertainment, and limited industrial/production uses
  - Please see Portland zoning codes to verify a specific use
  - \$1.00/square foot, NNN

Jon M. Rubey  
Vice President  
+1 503 499 0051  
jon.rubey@colliers.com

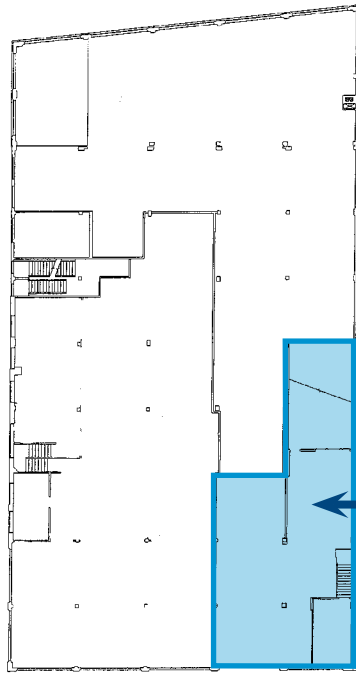
COLLIERS INTERNATIONAL  
851 SW Sixth Avenue  
Suite 1200  
Portland, OR 97204  
www.colliers.com

FOR LEASE > MIDTOWN PLAZA



# Retail & Industrial Maker Space

1543 SW ALDER STREET, PORTLAND, OR 97205



△  
Loading Door

Common Area



***Centrally Located***



***Great Amenities***



***Near Mass Transit***



This document has been prepared by Colliers International for advertising and general information only. Colliers International makes no guarantees, representations or warranties of any kind, expressed or implied, regarding the information including, but not limited to, warranties of content, accuracy and reliability. Any interested party should undertake their own inquiries as to the accuracy of the information. Colliers International excludes unequivocally all inferred or implied terms, conditions and warranties arising out of this document and excludes all liability for loss and damages arising there from. This publication is the copyrighted property of Colliers International and/or its licensor(s). ©2017. All rights reserved.

