

FOR SUBLEASE > NORTH CREEK CLASS A OFFICE SPACE

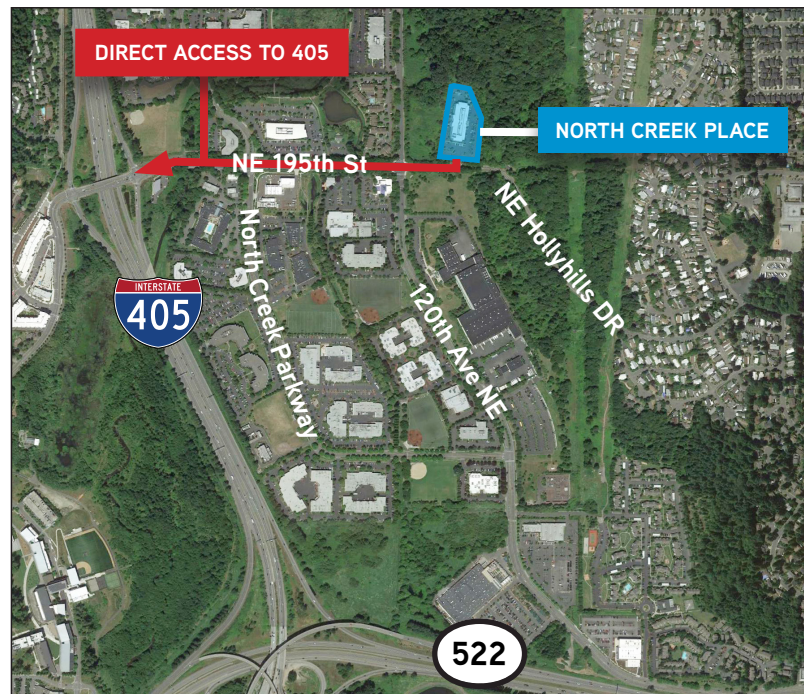
12100 NE 195th Street | Bothell, WA 98011

NORTH CREEK PLACE



SPACE DETAILS

- > Suite 315: approximately 6,397 RSF
- > Rate: **\$10.00** \$16.90/RSF/Year, NNN
- > Class A quality construction
- > Direct access to I-405
- > Available immediately
- > Above average parking ratio 3.22/1,000 SF
- > Covered parking available
- > Furniture available
- > Close to many amenities
- > Master lease expires: October 2018



Contact Information:

David Gunther
425 453 4546
david.gunther@colliers.com



COLLIERS INTERNATIONAL
11225 SE 6th Street, Suite 240
Bellevue, WA 98004
425 453 4545 | www.colliers.com

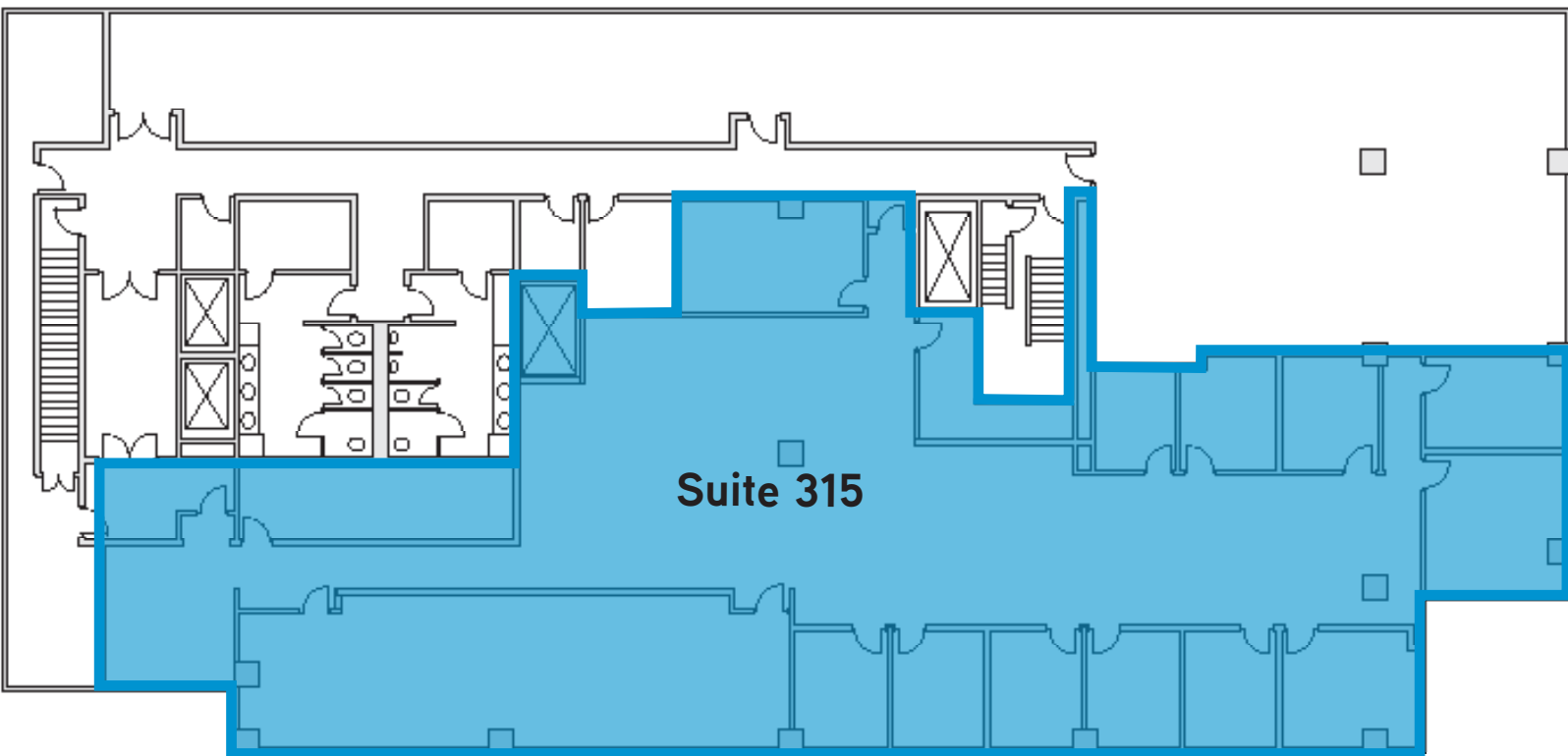
FOR SUBLEASE > NORTH CREEK CLASS A OFFICE SPACE

12100 NE 195th Street | Bothell, WA 98011

NORTH CREEK PLACE

APPROXIMATE FLOOR PLAN

- > ±6,397 RSF office space
- > \$10.00/SF/Year, NNN



This document has been prepared by Colliers International for advertising and general information only. Colliers International makes no guarantees, representations or warranties of any kind, expressed or implied, regarding the information including, but not limited to, warranties of content, accuracy and reliability. Any interested party should undertake their own inquiries as to the accuracy of the information. Colliers International excludes unequivocally all inferred or implied terms, conditions and warranties arising out of this document and excludes all liability for loss and damages arising there from. This publication is the copyrighted property of Colliers International and /or its licensor(s). © 2017. All rights reserved.

