



## FOR LEASE

# King Street Plaza Office Space

800 King Street  
Wilmington, Delaware

RICK KINGERY  
Vice President  
+1 302 425 4078  
[rick.kingery@colliers.com](mailto:rick.kingery@colliers.com)

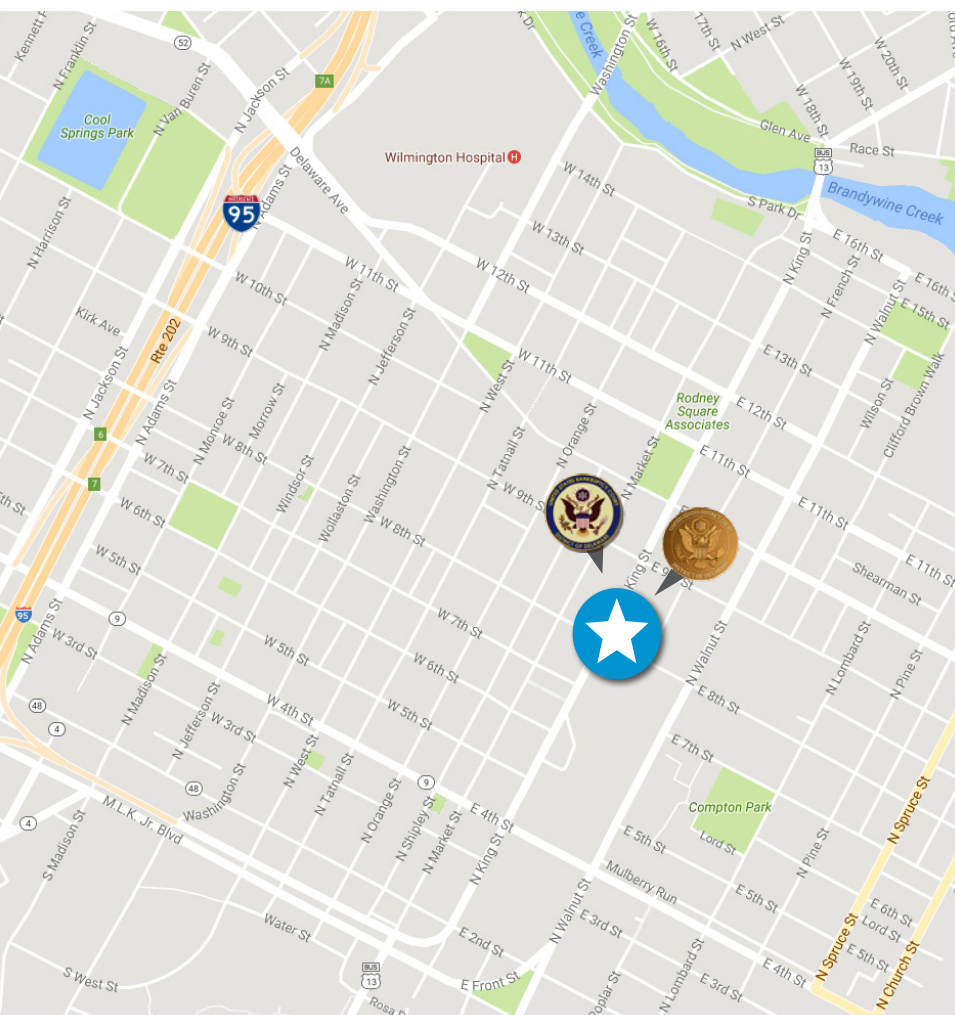
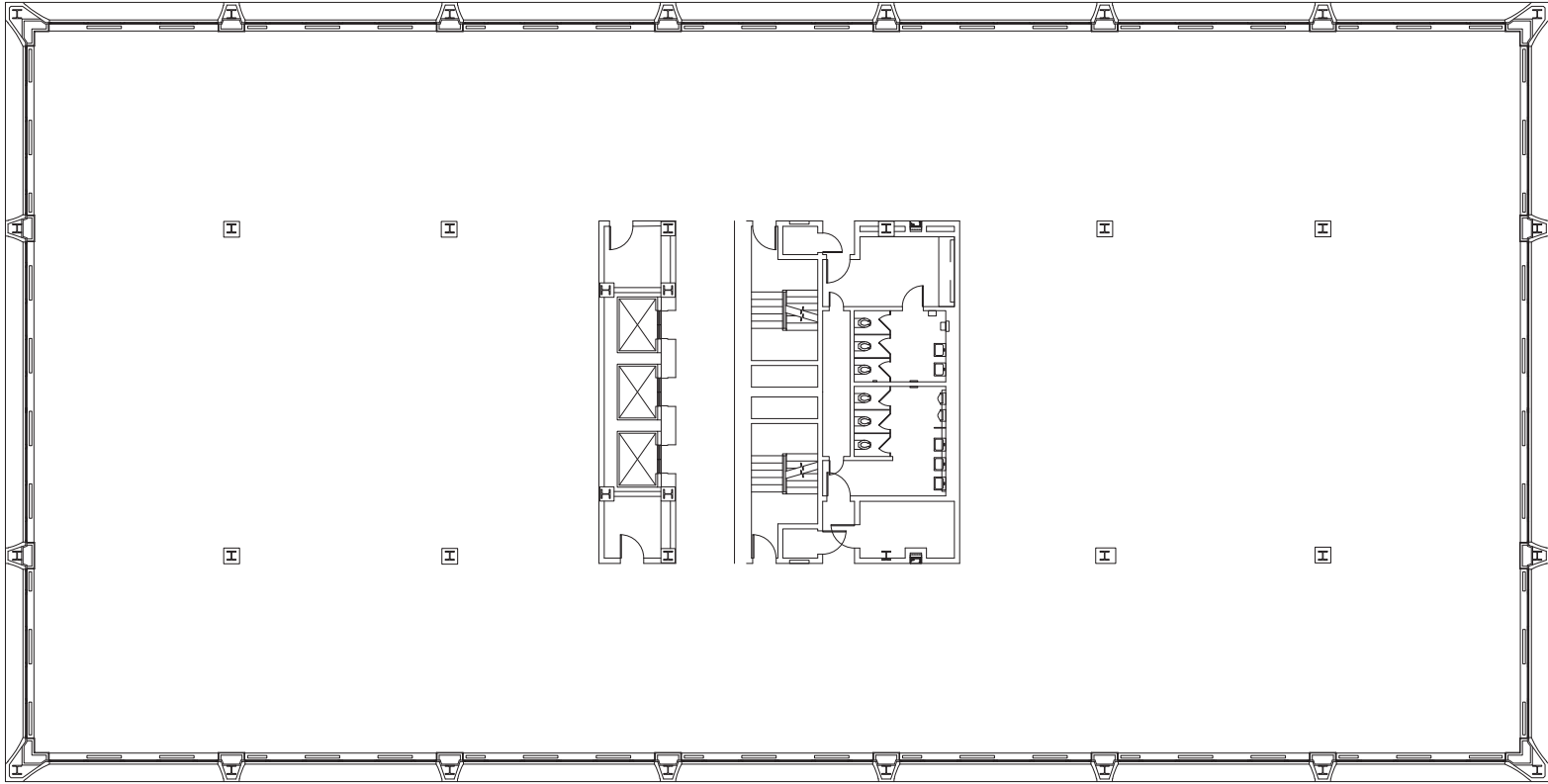


COLLIERS INTERNATIONAL  
300 Delaware Avenue, Suite 1014  
Wilmington, DE 19801  
[www.colliers.com/philadelphia](http://www.colliers.com/philadelphia)

## KEY FEATURES/HIGHLIGHTS

- › Large open floor plates with contiguous space available
- › On-site parking and security
- › Building signage available
- › Building is POP (Point of Presence) for Windstream's internet services, acting as major hub site for the Eastern seaboard. With Sonet Infrastructure the property can offer scalable bandwidth (10G+ location)
- › Direct neighbors with the U.S. Bankruptcy Court and the United States District Court for the District of Delaware
- › Less than one mile from I-95 and within walking distance to Amtrak's Wilmington Station
- › Just off Rodney Square with ease of access to the Market Street retail corridor

## TYPICAL FLOOR PLAN



## CONTACT

**RICK KINGERY**

Vice President

+1 302 425 4078

[rick.kingery@colliers.com](mailto:rick.kingery@colliers.com)



@ColliersDE



Colliersdelaware



[colliers.com/philadelphia](http://colliers.com/philadelphia)

The foregoing information was furnished to us by sources which we deem to be reliable, but no warranty or representation is made as to the accuracy thereof. Subject to correction of errors, omissions, change of price, prior sale or withdrawal from market without notice. The aerial image is intended to provide a general outline of the subject property. It is not a survey nor should it be relied upon for purposes of determining property lines or boundaries.



**COLLIERS INTERNATIONAL**  
300 Delaware Avenue, Suite 1014  
Wilmington, DE 19801  
[www.colliers.com/philadelphia](http://www.colliers.com/philadelphia)