

FOR SALE > INDUSTRIAL LAND

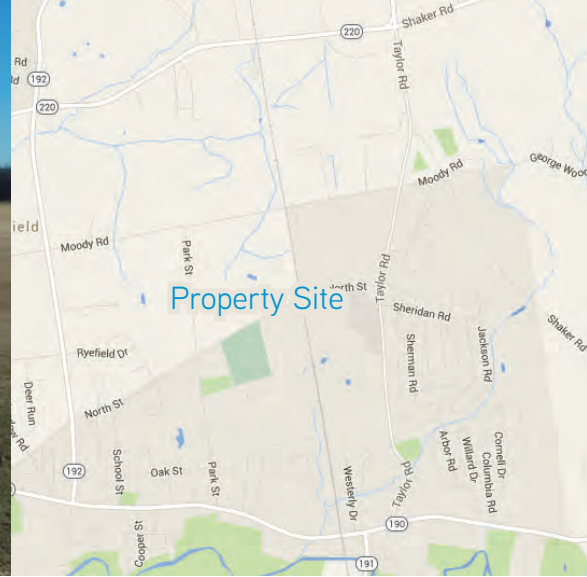


North St & Taylor Rd

ENFIELD, CT 06082



Partial view of North Street



North St & Taylor Rd > Industrial Land

There are four separate parcels available: three on North Road and one on Taylor Road, zoned I-1, with some re-zoning potential. The parcels are 22.70 acres, 5.40 acres, 21.78 acres and 31 acres. All the parcels about the rail line and the utilities are about 1,000' - 1,200' away. The 31 acre tract on Taylor Road is within 1/4 mile of a sewer pump house and is the most likely for re-zone success.

Building Amenities

- > 80.88 acres zoned I-1
- > Largest parcel is 31 acres; smallest parcel is 5 acres
- > Acreage abuts RR line
- > Some re-zoning potential
- > Utilities nearby
- > Between Routes 220 & 190 along Central NE Rail Line
- > Within four miles of Exit 47E off I-91
- > Priced at \$20,000/usable acre and \$7,500/non-buildable acre

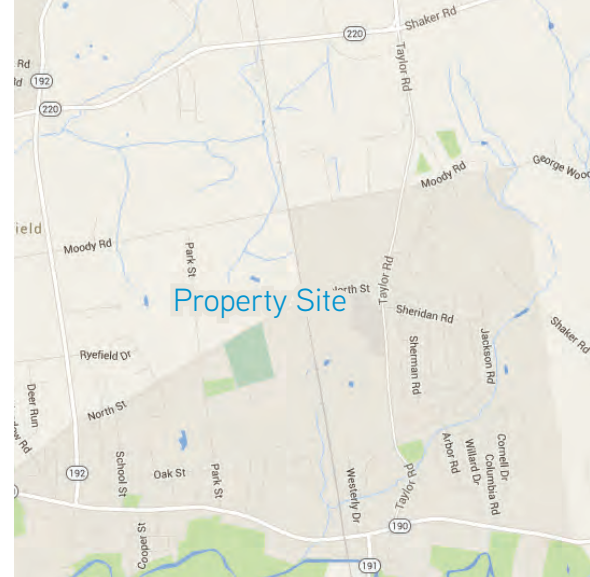
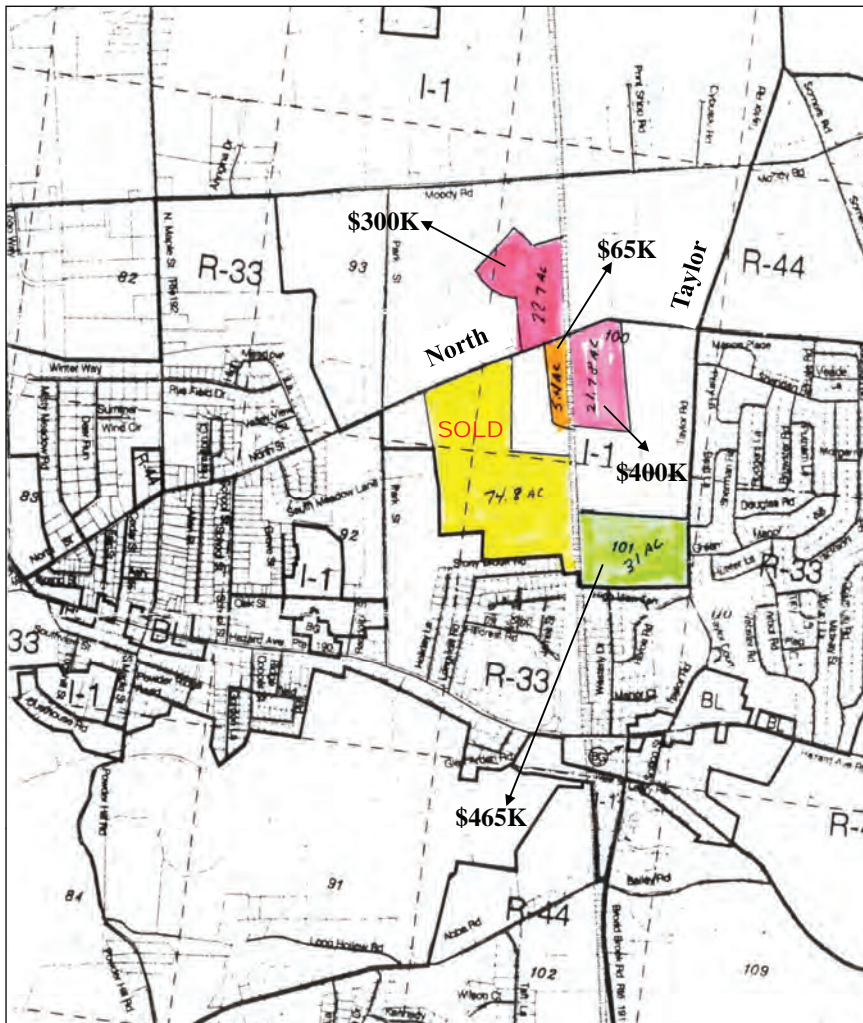
DIRECTIONS

Exit 47E from I-91. Take Hazard Avenue (Route 190) east to Park. Go right on North. Property is on the right and left abutting Central New England Rail Line; also parcel on Taylor Road.

AGENT: KEITH KUMNICK, SIOR
860 616 4019
HARTFORD, CT
keith.kumnick@colliers.com

COLLIERS INTERNATIONAL
864 Wethersfield Avenue
Hartford, CT 06114
www.colliers.com

North St & Taylor Rd > Site Plan



Contact Us

AGENT: KEITH KUMNICK, SIOR
860 616 4019
HARTFORD, CT
keith.kumnick@colliers.com

COLLIERS INTERNATIONAL
864 Wethersfield Avenue
Hartford, CT 06114
860 249 6521 Main
860 247 4067 Fax
www.colliers.com

Information contained herein has been obtained from the owners or from other sources deemed reliable. We have no reason to doubt its accuracy but regret we cannot guarantee it. All properties subject to change or withdrawal without notice.

