



Northpark Industrial Center

FOR SUBLEASE > 76,462 SF INDUSTRIAL FACILITY | 9158-9172 ETON AVENUE | CHATSWORTH, CA 91311

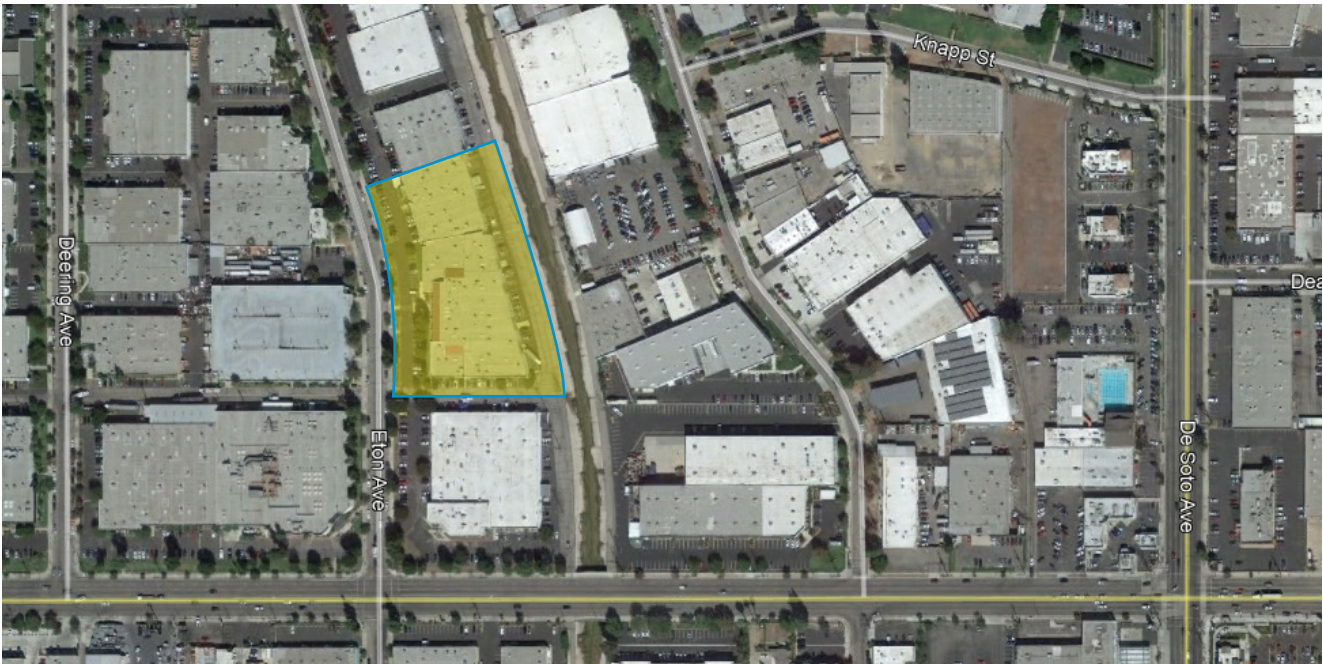
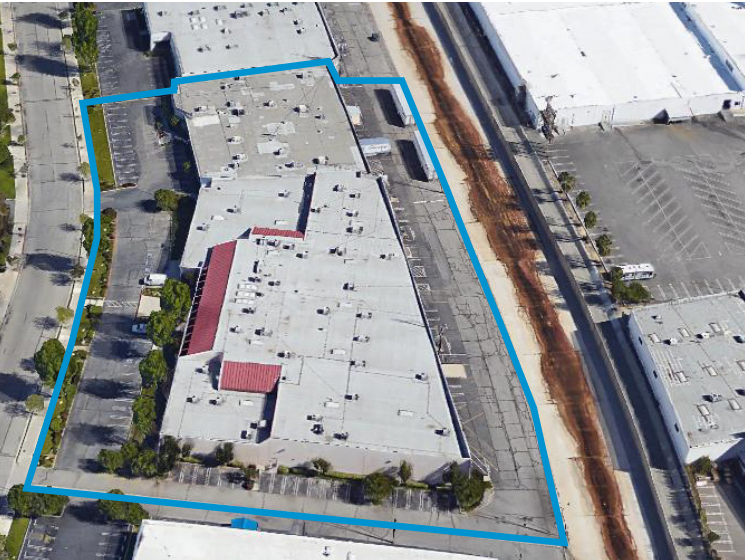
property highlights

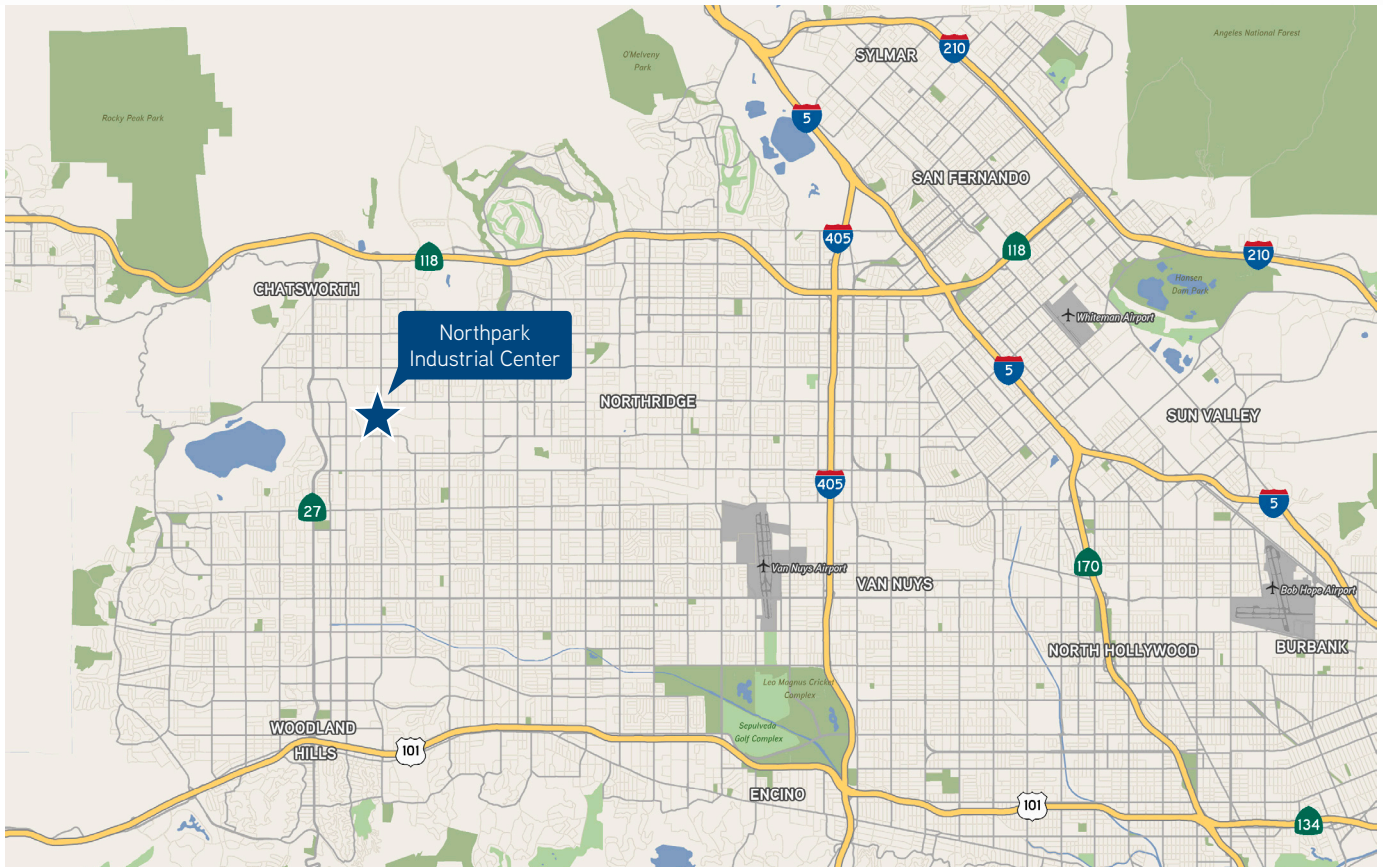
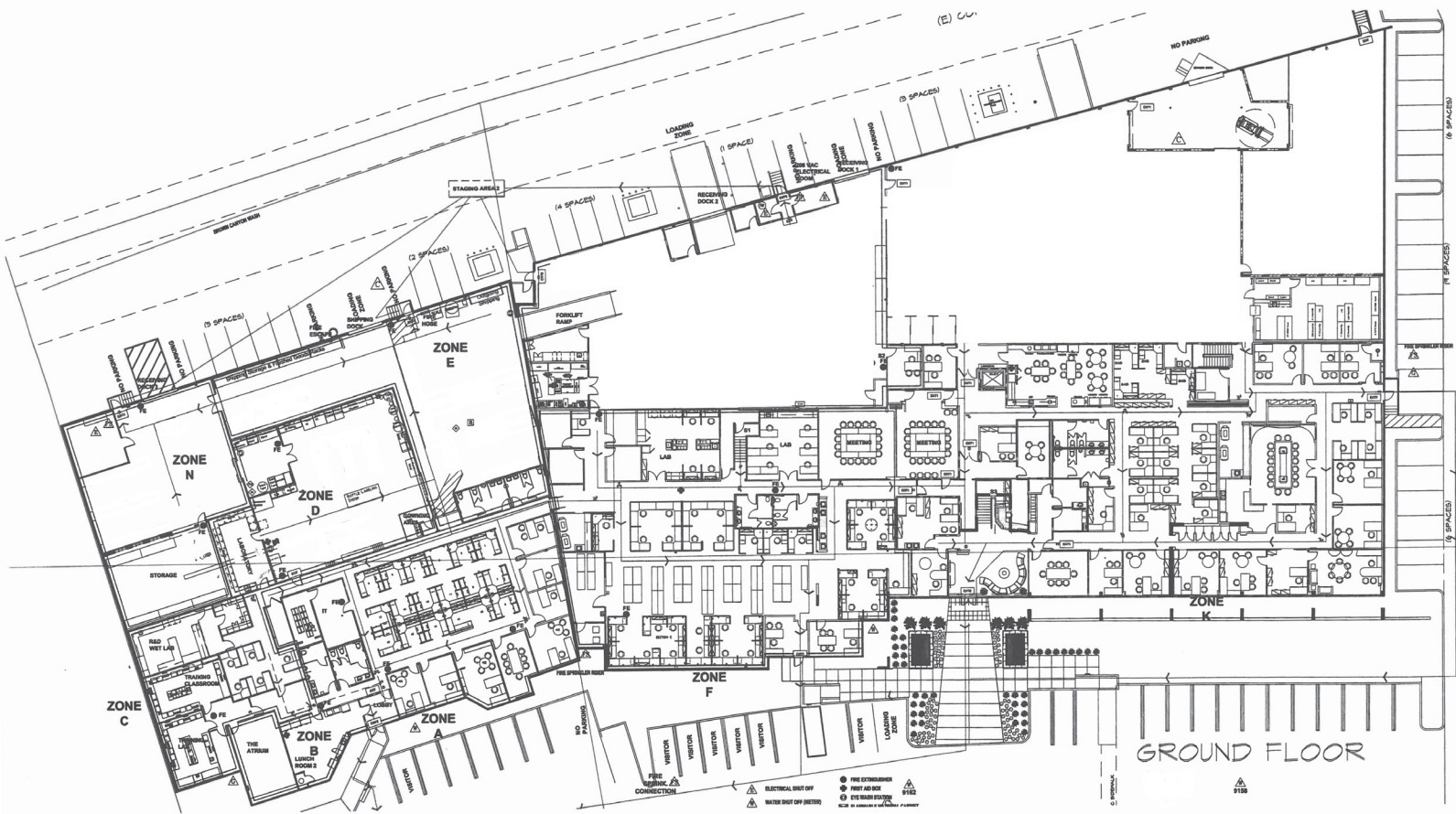
- > 76,462 SF Industrial facility on 132,248 SF MR2 zoned land
- > Divisible to 56,129 SF
- > Approximately 34,000 SF of high image office / lab space - improvements can be removed to suit
- > Ideal corporate headquarters
- > Extremely high image and functional office space
- > 100% HVAC throughout
- > 2,000 Amps of power
- > 14 to 22-foot clear height
- > Dock high and ground level loading
- > Elevator served
- > Rare master planned business park in San Fernando Valley
- > Premier West San Fernando Valley location
- > Clean, safe corporate business park
- > Functional and well maintained business park

offering

\$52,752.78 NNN per month
\$0.69 per square foot
Sublease through Oct. 31, 2020







For more information, please contact:

JOHN DeGRINIS, SIOR | Senior Executive Vice President | Lic. 00918958 | 818 325 4110 | john.degrinis@colliers.com

PATRICK DUROSS, SIOR | Senior Vice President | Lic. 01461031 | 818 325 4127 | patrick.duross@colliers.com

JEFF ABRAHAM, SIOR | Vice President | Lic. 01830909 | 818 325 4109 | jeff.abraham@colliers.com

Colliers International | 16830 Ventura Boulevard, Suite J | Encino, CA 91436 | www.colliers.com

Colliers International makes no guarantees, representations or warranties of any kind, expressed or implied, regarding the information including, but not limited to, warranties of content, accuracy and reliability. This publication is the copyrighted property of Colliers International and/or its licensor(s). 2017. All rights reserved.

