

FOR LEASE > INDIVIDUAL OFFICE SUITE

Merchants Plaza

1 OLD DOVER ROAD, ROCHESTER, NH 03867



Property Highlights

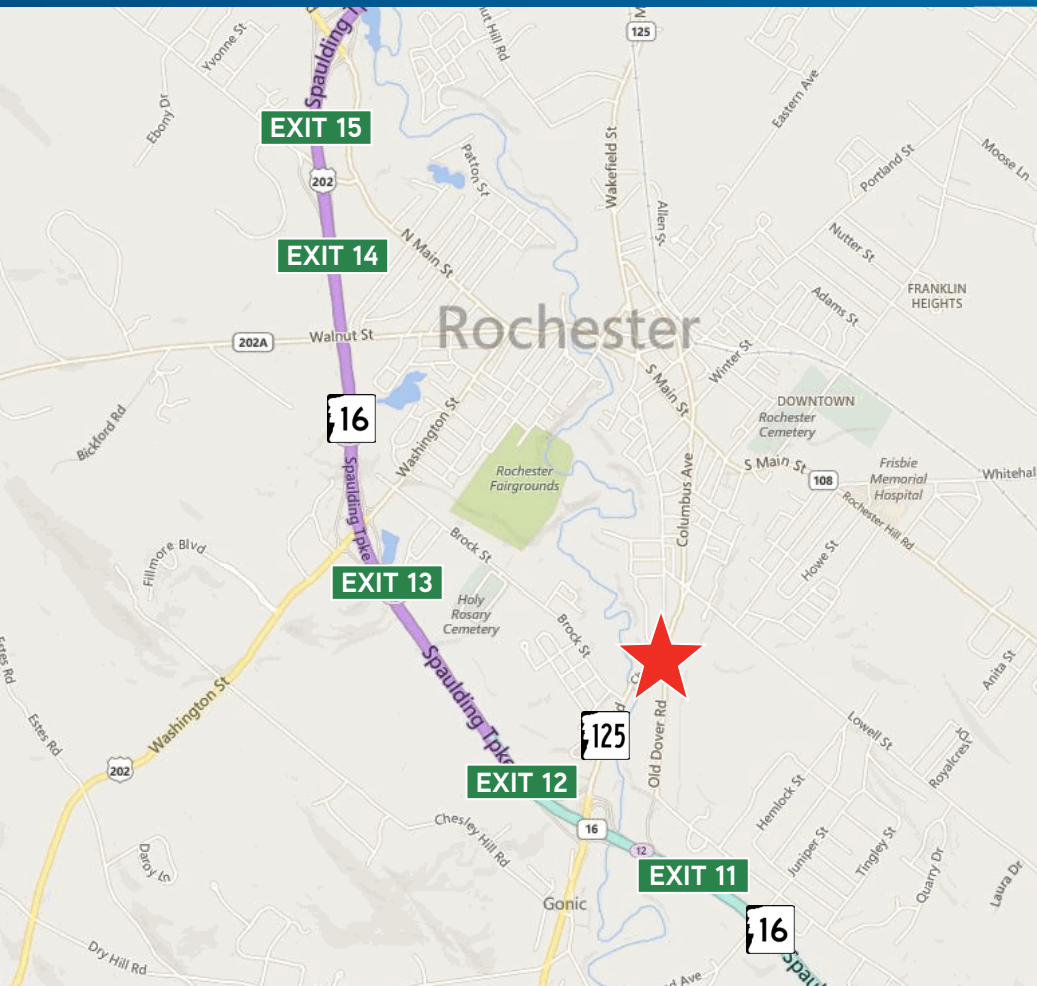
- > One unit remains at Merchants Plaza, which offers a unique setting for a small office user
- > The design of the building allows for ample natural light
- > Each floor has 2 shared restrooms
- > Located at the busy intersection of Routes 125 and 16B with 15,640± VPD (NHDOT 2018)
- > Easy access off Exits 11 or 12, Route 16/ Spaulding Turnpike



DAVID F. CHOATE, III
PORTSMOUTH, NH
david.choate@colliers.com

COLLIERS INTERNATIONAL
500 Market Street, Suite 9
Portsmouth, NH 03801
MAIN +1 603 433 7100
www.colliers.com

1 Old Dover Road | Rochester, NH



Snapshot > Office Building

Building Type	Office		
Year Built	1910		
Total Building SF	14,216±		
Utilities	Municipal water & sewer Natural gas & Atlantic Broadband		
Available SF	Lease rate per month		
1st Floor	2/2A	900± SF	\$1,200 + electric LEASED!
	6A	420± SF	\$575 LEASED!
2nd Floor	10B	90± SF	\$150 gross

Contact Us

DAVID F. CHOATE, III
PORTSMOUTH, NH
david.choate@colliers.com

COLLIERS INTERNATIONAL
500 Market Street, Suite 9
Portsmouth, NH 03801
MAIN +1 603 433 7100
www.colliers.com

The information contained herein is from sources deemed reliable, but is not guaranteed by Colliers International | New Hampshire (Colliers). Colliers assumes no responsibility for matters legal in character, nor does it render an opinion as to the title, which is assumed to be good. Colliers International excludes unequivocally all informed or implied terms, conditions and warranties arising out of this document and excludes all liability for loss and damages therefrom. All data is subject to change of price, error, omissions, other conditions or withdrawal without notice. Colliers welcomes the cooperation of other licensed real estate brokers who properly register a buyer or tenant with whom a sale or lease is consummated. Colliers is acting as the Seller's/Lessor's agent in the marketing of this property. Colliers International | New Hampshire is independently owned and operated.

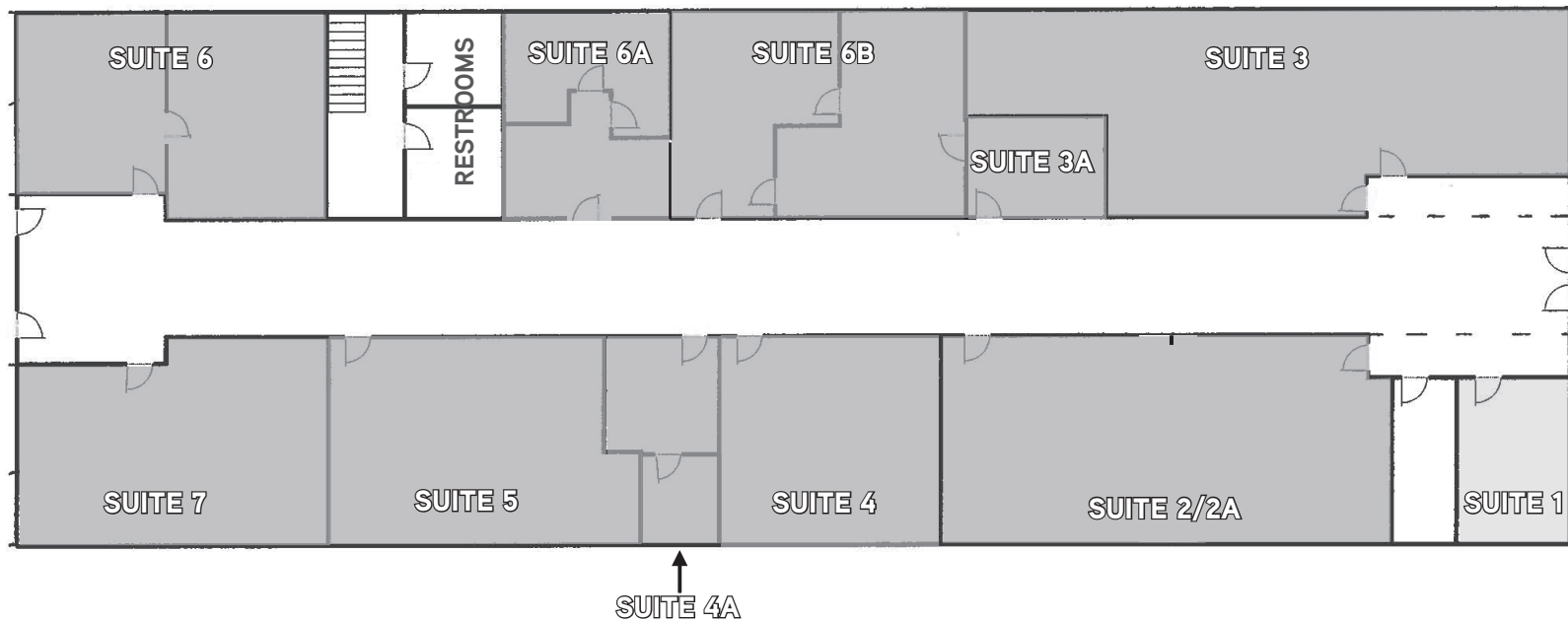


1st & 2nd Floor Plans

1 OLD DOVER ROAD, ROCHESTER, NH 03867



First Floor Plan



 = LEASED

 = AVAILABLE*

Second Floor Plan

