

FOR LEASE > RETAIL SPACE

# Hidden Valley Retail

12300 SOUTH 1300 EAST | DRAPER, UTAH



## Property Information

- > Available Space next to Anchor Starbucks.
- > 2,275 SF Available
- > Lease Rate: \$22.00/SF NNN
- > NNN Estimated at \$5.00
- > Anchored by Starbucks and Crumbl Cookies.
- > High Income Area
- > Great Signage Options

### DEMOGRAPHICS

	1 MILE	3 MILE	5 MILE
<b>Population</b>			
2017 Estimated	10,245	74,629	173,001
2022 Projected	10,769	79,509	186,668
<b>Households</b>			
2017 Estimated	2,942	22,256	52,321
2022 Projected	3,088	23,674	56,484
<b>Income</b>			
2017 Median HHI	\$106,584	\$91,356	\$86,702
2017 Average HHI	\$133,616	\$116,768	\$111,098
2017 Per Capita	\$38,239	\$35,109	\$33,711

Information provided by ESRI Business Analyst

**Jesse Raddon**  
+1 801 947 8300  
jesse.raddon@colliers.com

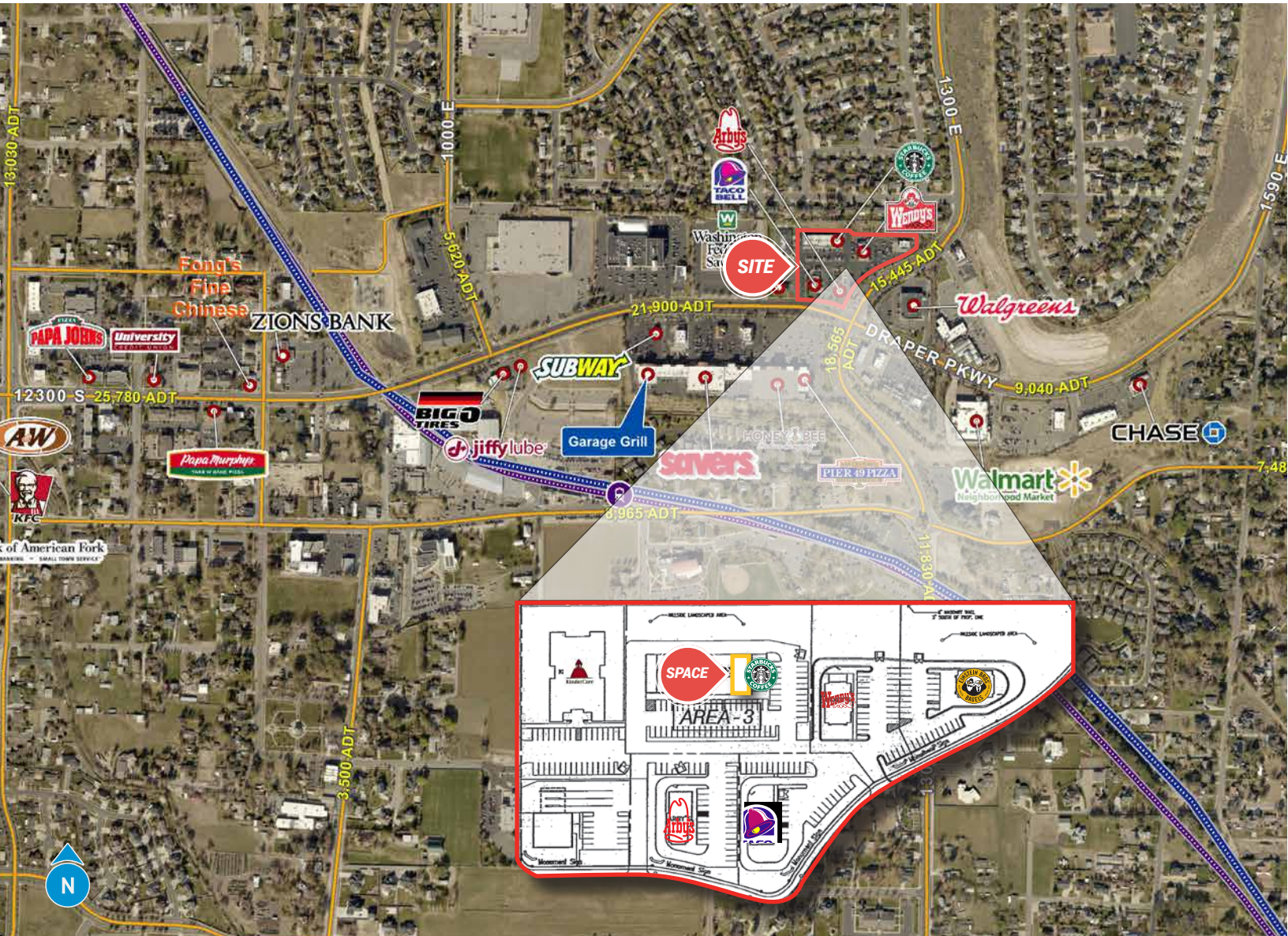
**Race Raddon**  
+1 801 947 8300  
race.raddon@colliers.com

**Colliers International**  
6550 S Millrock Dr | Suite 200  
Salt Lake City, UT 84121  
P: +1 801 947 8300

FOR LEASE > RETAIL SPACE

# Hidden Valley Retail

12300 SOUTH 1300 EAST | DRAPER, UTAH



This document has been prepared by Colliers International for advertising and general information only. Colliers International makes no guarantees, representations or warranties of any kind, expressed or implied, regarding the information including, but not limited to, warranties of content, accuracy and reliability. Any interested party should undertake their own inquiries as to the accuracy of the information. Colliers International excludes unequivocally all inferred or implied terms, conditions and warranties arising out of this document and excludes all liability for loss and damages arising there from. This publication is the copyrighted property of Colliers International and/or its licensor(s). ©2018. All rights reserved.

Colliers International  
6550 S Millrock Dr | Suite 200  
Salt Lake City, UT 84121  
P: +1 801 947 8300

