

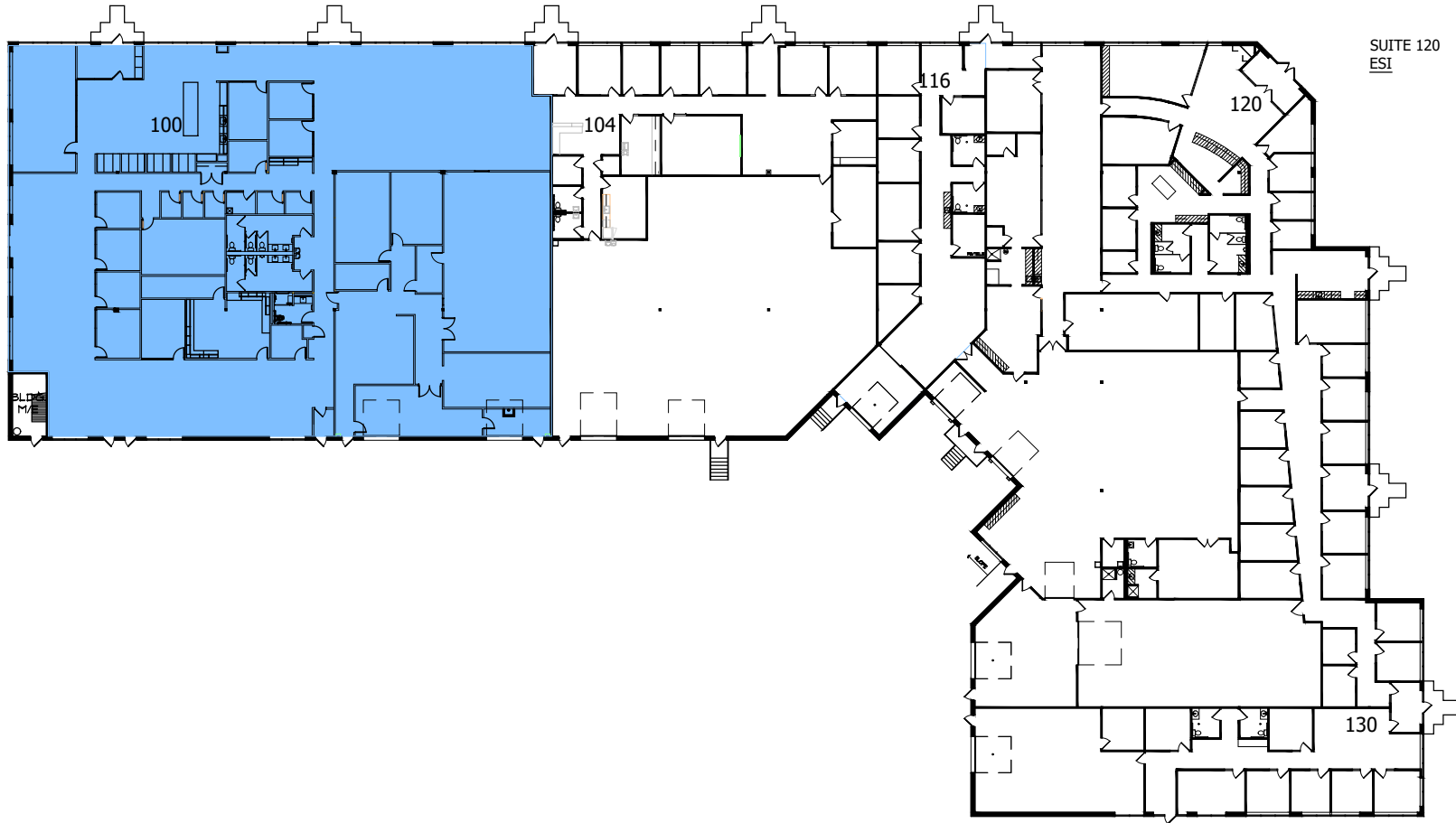
SUITE 100
 VACANT
 OFFICE 14,845 S.F.
 TECH 0 S.F.
 WAREHOUSE 1,428 S.F.
 BLDG M/E 56 S.F.
 TOTAL 16,329 S.F.
 EXP: --

SUITE 104
 UNITED OPERATIONS, INC.

SUITE 116
 ESI

SUITE 120
 ESI

SUITE 130
 PILATES MN LLC



1
 1

BUILDING KEY PLAN

14.0001450.000/ TTL

01/27/2026

NOT TO SCALE



LEASED & MANAGED BY:



POLARIS BUSINESS CENTRE
 2355 POLARIS LANE NORTH
 PLYMOUTH, MINNESOTA



901 Marquette Avenue South - Suite 2850
 Minneapolis, MN 55402
 Contact: Tiffany Townsend
 Phone: (612) 370-1594