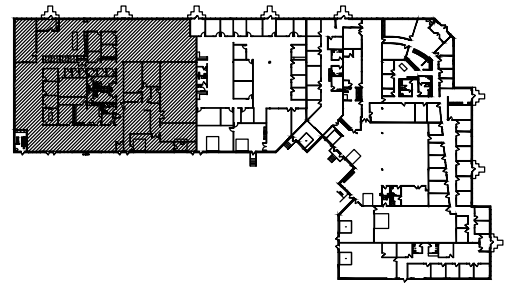


SQUARE FOOTAGE SUMMARY

OFFICE
WAREHOUSE
BLDG M/E
TOTAL

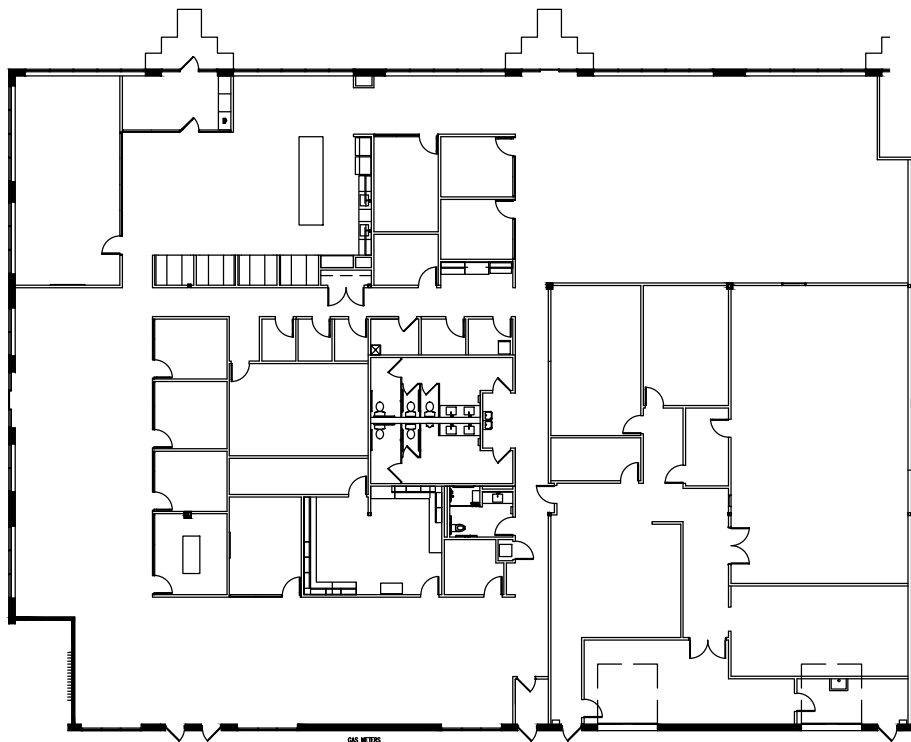
14,845 SF
1,428 SF
56 SF

16,329 RSF



KEY PLAN

NOT TO SCALE



1 FLOOR PLAN - SUITE 100
1 24.0001760.000

09-19-24

SCALE: 1/32" = 1'-0"



LEASED & MANAGED BY:



**POLARIS BUSINESS
CENTRE**
2355 POLARIS LANE NORTH
PLYMOUTH, MN

NELSON

901 Marquette Avenue South - Suite 2850
Minneapolis, MN 55403
Contact: Tiffany Townsend
Phone: (612) 370-1594