

**FOR
LEASE**

LES BOIS BUILDING

111 W MAIN ST, SUITE 100 | BOISE, ID



PROPERTY INFORMATION

Type: Medical Office
Parking: Ample, On-site (back-of-building)
Zoning: R-ODD
NNN's: \$7.20 PSF includes utilities (est.)

SPACE AVAILABLE

Suite	Size	Rate
100	5,400 SF	\$17.00 PSF NNN

HIGHLIGHTS

- » Surrounding tenants include: Idaho Eyelid & Facial Plastic Surgery, St. Luke's Bariatric and General Surgery Services, Boise Radiology Group, Center for Pain Care, St. Luke's Bariatric Nutrition Services, and Foothills Med Spa
- » Ideal for dermatologists given nearby tenant mix
- » One block south of St. Luke's downtown
- » Ideal for practices needing access to hospital or other general office related uses that need proximity to hospital
- » Can be converted to traditional office space
- » Monument sign available on heavily traveled Main Street
- » Located in close proximity to rapidly expanding Harris Ranch in Southeast Boise
- » Available immediately



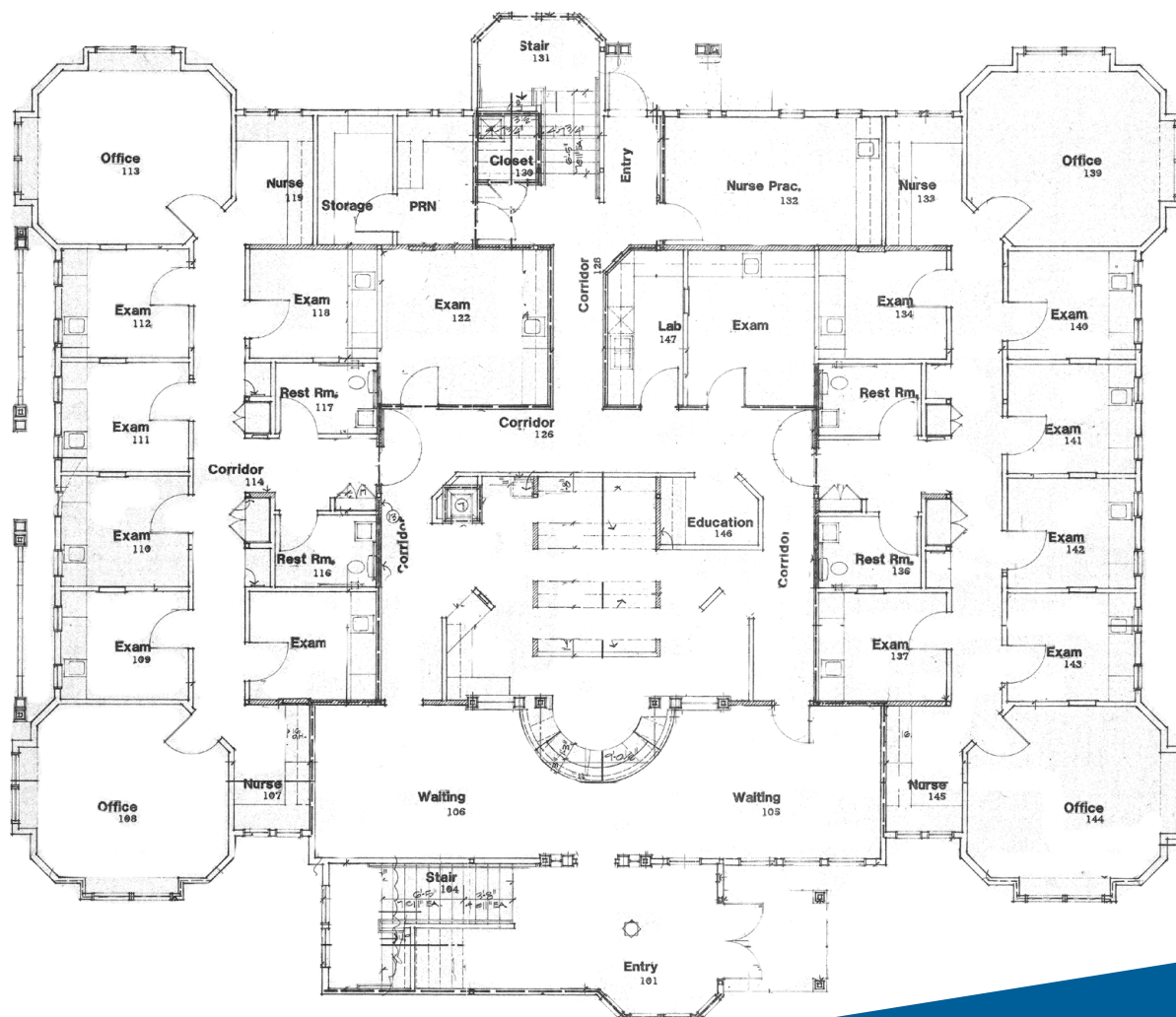
SCOTT FEIGHNER
208 493 5107
scott.feighner@colliers.com

**FOR
LEASE**

LES BOIS BUILDING

111 W MAIN ST, SUITE 100 | BOISE, ID

Colliers
INTERNATIONAL



SCOTT FEIGNER
208 493 5107
scott.feigner@colliers.com

**FOR
LEASE**

LES BOIS BUILDING

111 W MAIN ST, SUITE 100 | BOISE, ID



SCOTT FEIGNER
208 493 5107
scott.feighner@colliers.com

**FOR
LEASE**

LES BOIS BUILDING

111 W MAIN ST, SUITE 100 | BOISE, ID



SCOTT FEIGNER
208 493 5107
scott.feigner@colliers.com